



© Lana Grossa GmbH

Design 19 – Classici 28

**PULLOVER
PROMESSA**

PULLOVER · PROMESSA

Design 19 – Classici 28



Size 36/38 (40/42, 44)

Instructions are given for first size. Figures in parenthesis refer to larger sizes. When only one figure is given, it applies to all sizes.

Materials: 500 (550, 600) g of Lana Grossa **Promessa** (70% organic cotton, 30% recycled polyamide; 125 m/50 g) in Purple (**col 29**). Size 4 and 4.5 mm needles; size 4 mm circular needle, 40 cm long.

Rib patt: K1, p1.

St st: K on RS, p on WS.

Chart patt: Multiple of 4. Chart shows RS rows only. Read RS rows from right to left. On WS rows purl all sts. Rep rows 1 – 4.

Selvage sts: On every row: Knit first and last st. Selvage sts are not included on chart.

Full-fashion decrease: At beg of RS row, selvage st, k3, sk2p; at end of RS row, work to last 7 sts, k3tog, k3, selvage st.

Gauge: 21 sts and 30 rows = 10 x 10 cm in chart patt on size 4.5 mm needles.

Back: With size 4 mm needles cast on 106 (114, 122) sts. Beg and end with a RS row and working first and last st as selvage sts, work in rib patt for 4 cm. Change to size 4.5 mm needles. Next row (WS): Selvage st, purl to last st, increasing 18 sts evenly across row, end selvage st = 124 (132, 140) sts. Next row (RS): Selvage st, 1 st in St st; work row 1 of chart = work 1 st to patt rep, work 4-st patt rep 29 (31, 33) times, work 3 sts to end of chart; 1 st in St st, selvage st. Work in patt as set by last row until piece meas 35 cm from cast-on (measured hanging from needle), ending with a WS row. Shape armholes: Bind off 6 sts at beg of next 2 rows, 2 sts at

beg of next 4 rows, 1 st at beg of next 8 rows = 96 (104, 112) sts. Cont in patt until armhole meas 20 (21, 22) cm (measured hanging from needle), ending with a WS row. Shape shoulders: At each shoulder edge bind off 7 (8, 9) sts 4 times. At same time, when piece meas 1.5 cm from beg of shoulder shaping, shape neck: Next row (RS): Bind off center 36 sts. Working each side separately, bind off 2 sts at each neck edge 1 time. No sts rem.

Front: Work same as back until piece meas 46.5 (47.5, 48.5) cm (measured hanging from needle), ending with a WS row. Shape neck: Next row (RS): Bind off center 20 sts. Working each side separately and working full-fashion dec, dec 2 sts at each neck edge every RS row 5 times and when same length as back to shoulders, shape shoulders same as for back. No sts rem.

Sleeves: With size 4 mm needles cast on 54 sts. Beg and end with a RS row and working first and last st as selvage sts, work in rib patt for 4 cm. Change to size 4.5 mm needles. Next row (WS): Selvage st, purl to last st, increasing 26 (30, 34) sts evenly across row, end selvage st = 80 (84, 88) sts. Next row (RS): Selvage st, 1 st in St st; work row 1 of chart = work 1 st to patt rep, work 4-st patt rep 18 (19, 20) times, work 3 sts to end of chart; 1 st in St st, selvage st. Work in patt as set by last row and shape sleeve: Dec 1 st at each end of 15th row worked in chart patt, then every alt 14th and 16th row 4 times = 70 (74, 78) sts. Work even until piece meas 34 cm from cast-on (measured hanging from needle), ending with a WS row. Shape sleeve cap: Bind off 6 sts at beg of next 2 rows, 2 sts at beg of next 2 (6, 10) rows, 1 st at beg of next 32 (28, 24) rows. Bind off rem 22 sts.

Finishing: Pin pieces to measurements and block. Sew shoulder seams. **Neckband:** With size 4 mm circular needle pick up and k 116 sts evenly around neck edge. Place beg of rnd marker and join for working in rnds. Work in rib patt for 3.5 cm. Bind off all sts in rib. Sew in sleeves. Sew side and sleeve seams.

Chart

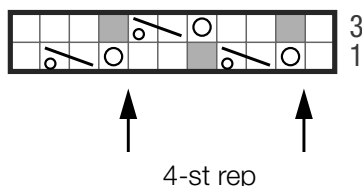


Chart key:

□ = k1

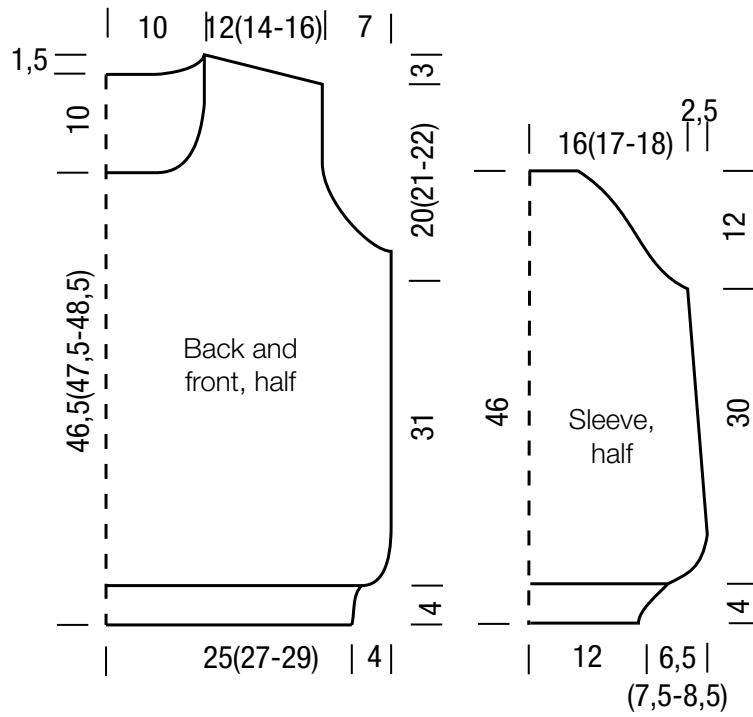
○ = yo

■ = represents “no stitch” (included to keep st count correct)

◻ = k2, pass yo over the 2 knitted sts

PULLOVER · PROMESSA

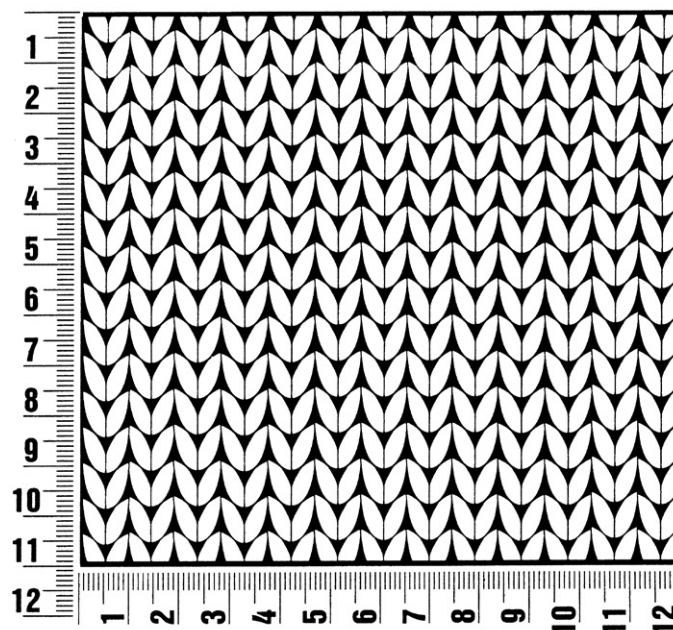
Design 19 – Classici 28



Gauge Swatch

Before you begin ...

...make a gauge swatch. Use the recommended needles, yarns and pattern stitch for your gauge swatch. It should measure approx. 12 cm x 12 cm. Cast-on and bind-off rows, as well as selvage stitches should not be included in the measurement. Pin your swatch and block it as you would the finished pieces of the garment. Count stitches and rows over 10 cm. If your gauge swatch is too small, switch to larger needles. If your gauge swatch is too big, switch to smaller needles.



Abbreviations

beg = begin(ning) · **ch** = chain · **cont** = continue · **dec** = decreas(e)(ing) · **inc** = increas(e)(ing) · **k** = knit · **kwise** = as if to knit
meas = measures · **M1L** = lift strand between sts from front to back and knit this strand through the back loop · **M1R** = lift strand between sts from the back and knit this strand through the front loop · **patt** = pattern · **pm** = place marker · **p** = purl
pwise = as if to purl · **rem** = remain(ing) · **rep** = repeat(s) · **rev St st** = reverse stockinette stitch · **rnd(s)** = round(s) · **RS** = right side · **sc** = single crochet · **skp** = slip 1 stitch as if to knit, knit 1 stitch, pass slipped stitch over knitted stitch · **sk2p** = slip 1 stitch as if to knit, knit 2 together, pass slipped stitch over knitted stitch · **s2kp** = slip 2 stitches as if to knit, k 1 stitch, pass slipped stitches over knitted stitch · **sl** = slip · **st(s)** = stitch(es) · **St st** = stockinette stitch · **tbl** = through the back loop · **tog** = together · **wyib** = with yarn in back of work · **wyif** = with yarn in front of work · **WS** = wrong side · **yo(s)** = yarn over(s)

Publisher's Info

Publisher: Lana Grossa GmbH, Gaimersheim, www.lana-grossa.com

Photographer: Milan Soos, www.milansoos.com