



© Lana Grossa GmbH

Design 11 – Nera 1

CARDIGAN

ALTA MODA ALPACA, SETASURI & COSMO

CARDIGAN · ALTA MODA ALPACA, SETASURI & COSMO

Design 11 – Nera 1



Size 36/38 (40/42, 44/46, 48/50)

Instructions are given for first size. Figures in parenthesis refer to larger sizes. When only one figure is given, it applies to all sizes.

Materials: 400 (450, 500, 550) g of Lana Grossa **Alta Moda Alpaca** (90% baby alpaca, 5% Merino wool, 5% polyamide; 140 m/50 g) in Light Grey Mélange (**col 12**); 125 (150, 150, 175) g of Lana Grossa **Setasuri** (69% Suri alpaca, 31% silk; 212 m/25 g) in Charcoal (**col 18**); 200 (300, 300, 300) g of Lana Grossa **Cosmo** (100% cotton (with sequins); 260 m/100 g) in Black (**col 5**). Size 8 and 9 mm needles; 2 size 6 mm double-pointed needles [see tip under finishing].

Note: Work with 1 strand of each yarn held tog throughout = 3 strands held tog.

Rib patt: P1, k1. On foll rows work sts as they appear.

Drop st patt: Row 1 (RS): Knit all sts. Row 2 (WS): Purl all sts. Row 3: Knit all sts. Row 4: Purl all sts. Row 5: Knit all sts. Row 6: *P1, yo*, rep *-*, end p1. Row 7: Knit all sts, drop all yos. Work rows 1 – 7 once, then rep rows 2 – 7.

Two-stitch selvage: At beg of row, sl 1 pwise wyif, k1. At end of row, sl 1 pwise wyif, k1.

Gauge: 10 sts and 13 rows = 10 x 10 cm in drop st patt with size 9 mm needles and 3 strands held tog.

Back: Using size 8 mm needles and holding 1 strand of each yarn tog cast on 68 (72, 76, 80) sts. Next row (WS): Work in rib patt. Change to size 9 mm needles. Work in drop st patt until piece meas 51 (49, 47, 45) cm from cast-on. Place marker in first and last st on last WS row to indicate beg of armholes. Cont in patt until piece meas 22 (24, 26, 28) cm from armhole markers, ending with a WS row.

Shape shoulders: At each shoulder edge bind off 6 sts 1 time, 7 sts 3 times (7 sts 3 times, 8 sts 1 time / 7 sts 1 time, 8 sts 3 times / 8 sts 3 times, 9 sts 1 time). Bind off rem 14 sts.

Left front: Using size 8 mm needles and holding 1 strand of each yarn tog cast on 35 (37, 39, 41) sts. Next row (WS): Work in rib patt. Begin the rib patt with k1 and end the rib patt with k1. Change to size 9 mm needles. Next row (RS): Work in drop st patt to last 2 sts, two-stitch selvage. Maintaining two-stitch selvage at front edge, cont in drop st patt until piece meas 51 (49, 47, 45) cm from cast-on. Place marker last st on last WS row to indicate beg of armhole. Cont in patt until piece meas 22 (24, 26, 28) cm from armhole marker, ending with a WS row.

Shape shoulder at beg of RS rows same as for back. Bind off rem 8 sts.

Right front: Using size 8 mm needles and holding 1 strand of each yarn tog cast on 35 (37, 39, 41) sts. Next row (WS): Work in rib patt. Begin the rib patt with p1 and end the rib patt with p1. Complete as given for left front, reversing shoulder shaping.

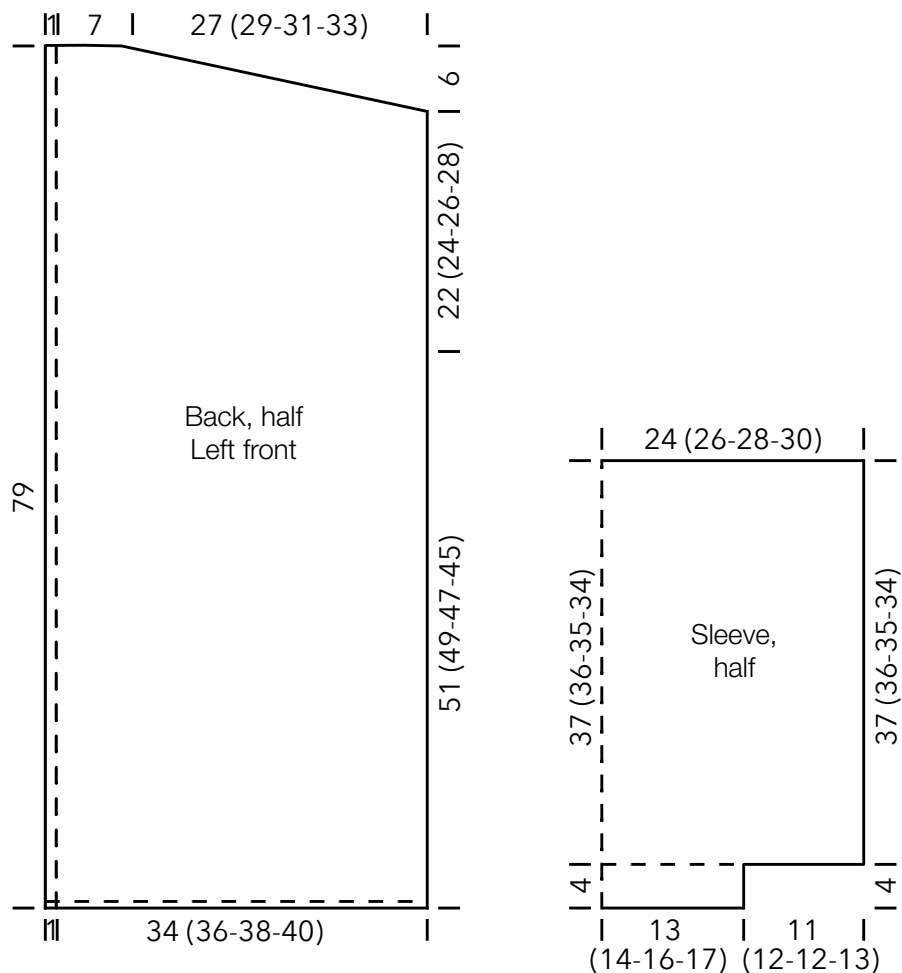
Sleeves: Using size 8 mm needles and holding 1 strand of each yarn tog cast on 26 (28, 32, 34) sts. Beg and end with a WS row work in rib patt until piece meas 4 cm from cast-on, increasing 22 (24, 24, 26) sts evenly on last WS row = 48 (52, 56, 60) sts. To increase, work yos. Change to size 9 mm needles. Next row (RS): Work row 1 of drop st patt and at same time, ktbl into yos. Cont in drop st patt until piece meas 41 (40, 39, 38) cm from cast-on. Bind off all sts.

Finishing: Pin pieces to measurements and block. Sew shoulder seams and front neck edges to back neck edge. Sew on sleeves between markers, easing to fit. Sew side and sleeve seams.

Tip: If desired, work belt as foll: Using size 6 mm dpn cast on 5 sts. * Next row (RS): With 2nd dpn, k5, do not turn. Sl sts back to beg of needle to work next row from RS, pulling yarn tightly from end of row. Rep from * until i-cord measures desired length. Bind off.

CARDIGAN · ALTA MODA ALPACA, SETASURI & COSMO

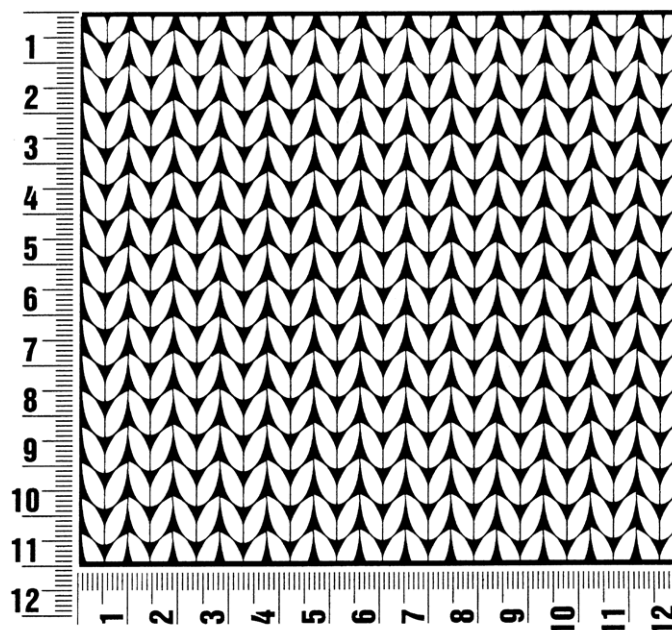
Design 11 – Nera 1



Gauge Swatch

Before you begin ...

...make a gauge swatch. Use the recommended needles, yarns and pattern stitch for your gauge swatch. It should measure approx. 12 cm x 12 cm. Cast-on and bind-off rows, as well as selvedge stitches should not be included in the measurement. Pin your swatch and block it as you would the finished pieces of the garment. Count stitches and rows over 10 cm. If your gauge swatch is too small, switch to larger needles. If your gauge swatch is too big, switch to smaller needles.



Abbreviations

beg = begin(ning) · **ch** = chain · **cont** = continue · **dec** = decreas(e)(ing) · **inc** = increas(e)(ing) · **k** = knit · **kwise** = as if to knit
meas = measures · **M1L** = lift strand between sts from front to back and knit this strand through the back loop · **M1R** = lift strand between sts from the back and knit this strand through the front loop · **patt** = pattern · **pm** = place marker · **p** = purl
pwise = as if to purl · **rem** = remain(ing) · **rep** = repeat(s) · **rev St st** = reverse stockinette stitch · **rnd(s)** = round(s) · **RS** = right side · **sc** = single crochet · **skp** = slip 1 stitch as if to knit, knit 1 stitch, pass slipped stitch over knitted stitch · **sk2p** = slip 1 stitch as if to knit, knit 2 together, pass slipped stitch over knitted stitch · **s2kp** = slip 2 stitches as if to knit, k 1 stitch, pass slipped stitches over knitted stitch · **sl** = slip · **st(s)** = stitch(es) · **St st** = stockinette stitch · **tbl** = through the back loop · **tog** = together · **wyib** = with yarn in back of work · **wyif** = with yarn in front of work · **WS** = wrong side · **yo(s)** = yarn over(s)

Publisher's Info

Publisher: Lana Grossa GmbH, Gaimersheim, www.lana-grossa.com

Photographer: Milan Soos, www.milansoos.com