



© Lana Grossa GmbH

Design 13 – Filati Journal 70

JACKET ORSETTO

JACKET • ORSETTO

Design 13 – Filati Journal 70



Size 36 – 40 (42 – 46)

Instructions are given for smaller size. Figure in parenthesis refers to larger size. When only one figure is given, it applies to both sizes.

Materials: 650 (750) g of Lana Grossa **Orsetto** (60% Merino wool, 40% superfine alpaca; 75 m/50 g) in White Blue (**col 1**). Size 5 and 6 mm needles; size 6 mm circular needle, 60 cm long; six 25 mm transparent snap buttons.

Garter selvage: Always knit first and last st.

Slip stitch selvage: Always knit first st, sl last st pwise wyif.

Rib patt: K1, p1. On foll rows/rnds work sts as they appear.

St st: K on RS, p on WS.

Gauge: 12 sts and 20 rows = 10 x 10 cm in St st on size 6 mm needles.

Back: Using size 5 mm needles cast on 84 (92) sts. Beginning and ending with a WS row work in rib patt until piece meas 6 cm from cast-on. Work first and last st as a garter selvage. Change to size 6 mm needles. Work in St st for 16 rows, ending with a WS row.

Shape sides: Dec 1 st at each end of next RS row, then every 18th row 3 times = 76 (84) sts. Cont until a total of 90 rows = 45 cm has been worked from end of rib patt. Place marker in first and last st on last WS row to indicate beg of armholes. Cont for 42 (46) rows and piece meas 21 (23) cm from armhole markers.

Shape shoulders and neck: At each shoulder edge bind off 4 sts 6 times (3 sts 1 time, 5 sts 5 times). **At same time**, when working 4th RS shoulder bind-off row, work neck as foll: Bind off center 24 sts. Working each side separately, bind off 2 sts at each neck edge 1 time. No sts rem.

Left front: Using size 5 mm needles cast on 48 (52) sts. Next row (WS): Slip st selvage; *p1, k1*, rep *-* to last 3 sts, p1, k1; garter selvage. Work in rib patt as set by last row until piece meas 6 cm from cast-on, ending with a WS row. Change to size 6 mm needles. Next row (RS): Garter selvage; work next 40 (44) sts in St st; work next 6 sts in est rib patt; slip st selvage. Work in patt as set by last row for a total of 16 rows, ending with a WS row.

Shape side: Dec 1 st at beg of next RS row, then every 18th row 3 times = 44 (48) sts. Cont until a total of 90 rows = 45 cm has been worked from end of rib patt. Place marker in last st on last WS row to indicate beg of armhole. Cont for 33 (37) rows and piece meas 17 (19) cm from armhole marker, ending with a RS row.

Shape neck and shoulder: At beg of WS rows bind off 9 sts 1 time, 3 sts 1 time, 2 sts 2 times, 1 st 4 times. **At same time**, when 42 (46) rows = 21 (23) cm have been worked from armhole marker, shape shoulder at right edge same as for back. No sts rem.

Right front: Work same as left front, reversing all shaping and patt placement.

Sleeves: Using size 5 mm needles cast on 38 sts. Work in rib patt same as for back until piece meas 6 cm from cast-on. Change to size 6 mm needles. Work in St st and shape sleeve: Inc 1 st at each end of 9 (7)th row, then every 10 (8)th row 6 (8) times = 52 (56) sts. Work even until 76 (78) rows have been worked in St st and piece meas 38 (39) cm from end of rib patt.

Shape sleeve cap: Bind off 4 sts at beg of next 8 rows (5 sts at beg of next 2 rows, 4 sts at beg of next 6 rows). Bind off rem 20 (22) sts.

Back tab: Using size 6 mm needles cast on 15 sts. Beginning and ending with a WS row work in rib patt until piece meas 50 cm from cast-on. Work first and last st as a slip st selvage. Begin the rib patt with k1 and end with k1. Bind off all sts.

Finishing: Pin pieces to measurements and block. Sew shoulder seams.

Collar: Using size 6 mm circular needle and RS facing, pick up and k 67 sts evenly along neck edge.

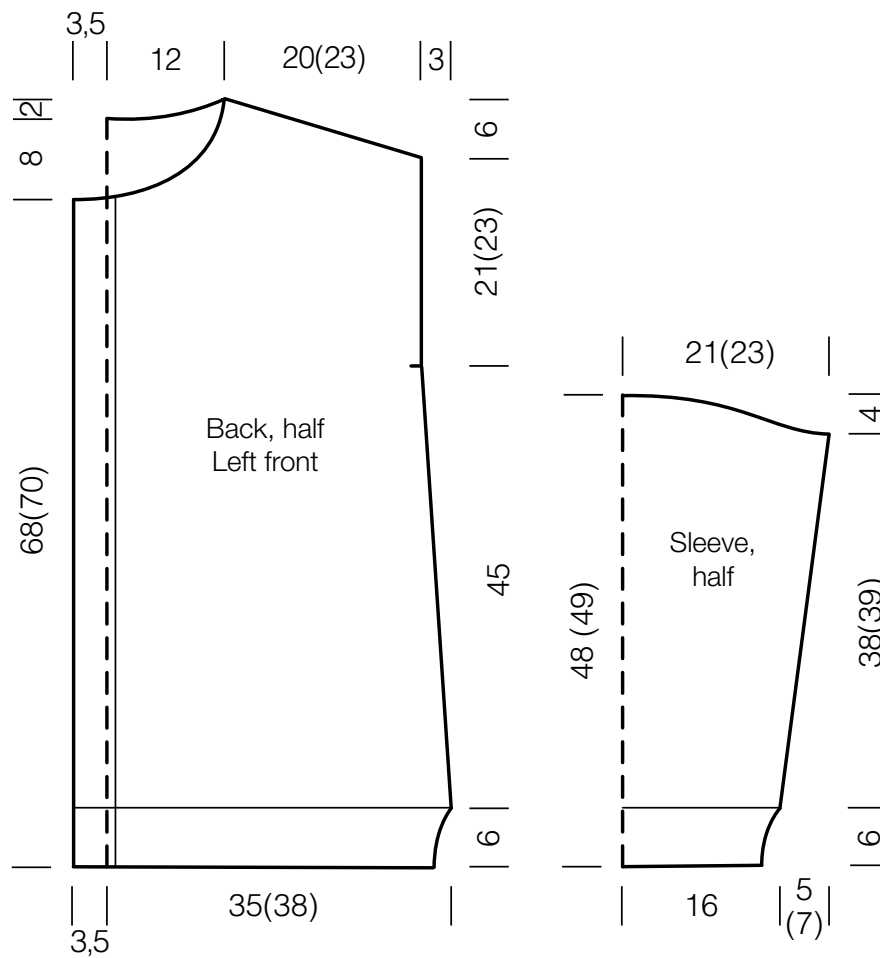
Next row (WS): Slip st selvage; [p1, k1] 3 times; work next 53 sts in St st; [k1, p1] 3 times; slip st selvage.

Work in patt as set by last row until collar meas 28 cm. Loosely bind off all sts. Fold collar in half to WS and sew down. Seam short edges of collar.

Sew on sleeves between markers. Sew side seams, taking back tab into side seams, approx. 9 cm down from sleeves. Sew sleeve seams. Sew on snap buttons, with bottom button approx. 9 cm up from bottom edge, top button at center of collar and and rem 4 buttons spaced evenly apart.

JACKET · ORSETTO

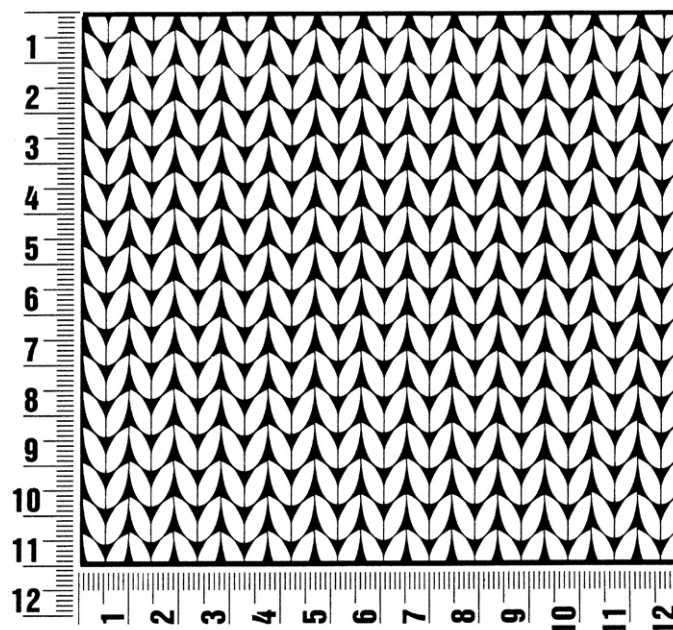
Design 13 – Filati Journal 70



Gauge Swatch

Before you begin ...

...make a gauge swatch. Use the recommended needles, yarns and pattern stitch for your gauge swatch. It should measure approx. 12 cm x 12 cm. Cast-on and bind-off rows, as well as selvedge stitches should not be included in the measurement. Pin your swatch and block it as you would the finished pieces of the garment. Count stitches and rows over 10 cm. If your gauge swatch is too small, switch to larger needles. If your gauge swatch is too big, switch to smaller needles.



Abbreviations

beg = begin(ning) · **ch** = chain · **cont** = continue · **dec** = decreas(e)(ing) · **inc** = increas(e)(ing) · **k** = knit · **kwise** = as if to knit
meas = measures · **M1L** = lift strand between sts from front to back and knit this strand through the back loop · **M1R** = lift strand between sts from the back and knit this strand through the front loop · **patt** = pattern · **pm** = place marker · **p** = purl
pwise = as if to purl · **rem** = remain(ing) · **rep** = repeat(s) · **rev St st** = reverse stockinette stitch · **rnd(s)** = round(s) · **RS** = right side · **sc** = single crochet · **skp** = slip 1 stitch as if to knit, knit 1 stitch, pass slipped stitch over knitted stitch · **sk2p** = slip 1 stitch as if to knit, knit 2 together, pass slipped stitch over knitted stitch · **s2kp** = slip 2 stitches as if to knit, k 1 stitch, pass slipped stitches over knitted stitch · **sl** = slip · **st(s)** = stitch(es) · **St st** = stockinette stitch · **tbl** = through the back loop · **tog** = together · **wyib** = with yarn in back of work · **wyif** = with yarn in front of work · **WS** = wrong side · **yo(s)** = yarn over(s)

Publisher's Info

Publisher: Lana Grossa GmbH, Gaimersheim, www.lana-grossa.com
Photographer: Nicolas Olonetzky, www.nicolasolonetzky.com