

FILATI NO. 70

FILATI

Design 27

JACKET



JACKET

Size: 36 - 40

Because of the oversized fit the cardigan fits most sizes.

Materials: Lana Grossa **Bomba** (85 % Virgin wool Merino, 15 % Polyamide, 290 m/100 g), **400 g** dark green/dark petrol/white green/gray green/citrus yellow/yellow/dark gray/corn yellow/salmon/coral/blackberry/dark violet/orange (**col 4**) and Lana Grossa **Alpaca Air II** (50 % Alpaca, 27 % Polyamide, 14 % Cotton, 9 % Virgin wool Merino, 140 m/50 g), **150 g** dark violet (**col 21**); 1 crochet hook size 8 mm; 1 circular knitting needle size 6 mm, 100 cm long.

Garler st selvage: K the 1st and last st on each row.

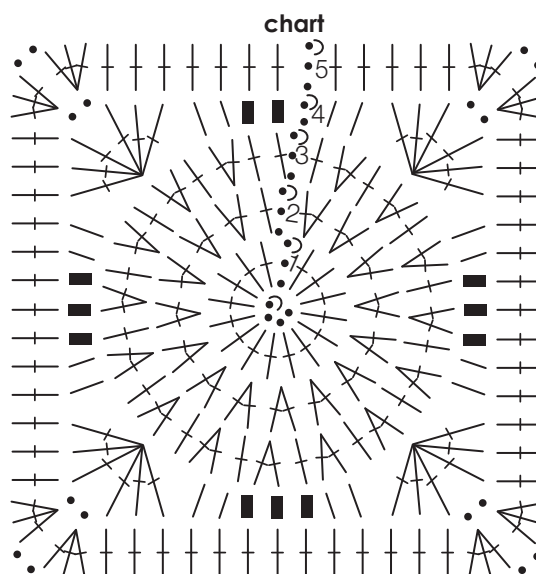
Rib st: *k2, p2* rep cont. On foll rows/rnds work sts as they appear.

Granny square: work according to chart. All rnds are pictured. Work the 1st rnd into a magic ring or alternatively ch4 and close ring with a sl st. Start each rnd with ch3 (instead of the 1st dc), and close rnd with a sl st into the 1st ch. Work rnds 1-5.

Gauge: 1 granny square = 21 x 21 cm with crochet hook size 8 mm. 11 sts and 22 rows = 10 x 10 cm in rib st on size 6 mm needles.

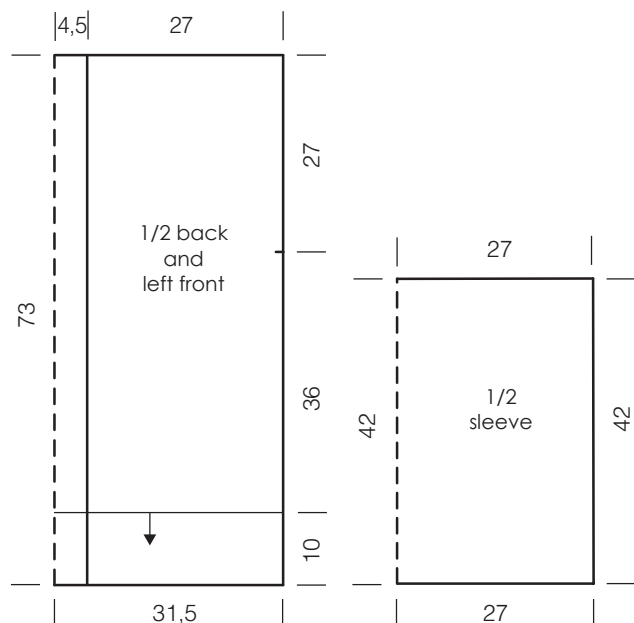
Granny squares: work according to chart and scheme. Crochet 23 squares in Bomba and weave in all ends. Moisten, block and let the grannys air dry. With WS-facing each other crochet the squares tog using sl sts and Bomba. Work sleeves in same way. Then crochet 3 rnds dc into the open front edges (see schematic) and sleeves (see gray areas in schematic). Close shoulder seams for 27 cm, side seams for 46 cm with sl sts whilst leaving 27 cm open to later insert the sleeves. Insert sleeves likewise.

Finishing: With circular needle size 6 mm and Alpaca Air II pick up 128 sts from the hem and work in rib st in rows starting on a WS-row: Selvage st, p2, k2 and end with k2, p2, selvage st. After 10 cm = 22 rows bind off all sts. For the wide front band pick up 176 sts from the front edges and back neckline in Alpaca Air II. Work in rib st in rows and start likewise as hem. After 24 cm = 54 rows bind off all sts as they appear. Weave in all ends.



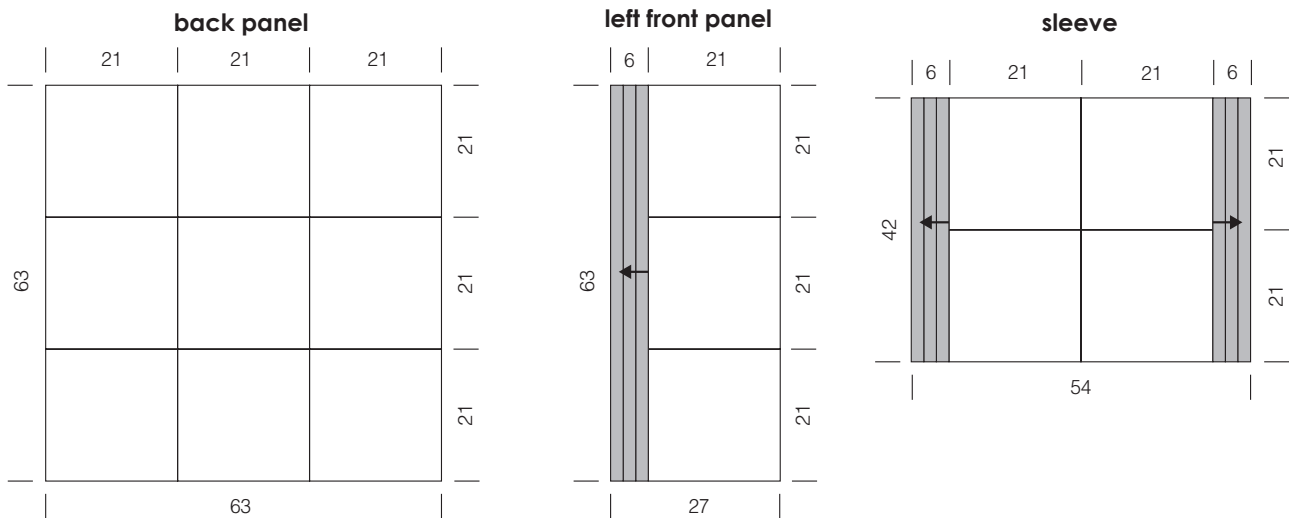
key:

- = 1 ch
- = 1 sl st
- = 1 sc
- | = 1 hdc
- = 1 dc
- ∨ = 2 dc in 1 st
- ∨∨ = 3 dc in 1 st
- ⋈ = 3 dc in 1 st, ch2, 3 dc into the same st



JACKET

schematic



GAUGE SWATCH

Before you start knitting...

...make a gauge swatch. Use the recommended needles, yarns and stitch pattern for your gauge swatch. It should measure approx. 12 cm x 12 cm. Cast on and bind off rows, as well as selvage stitches should not be included in the measurement. Pin your swatch and block it as you would do with the finished pieces of the garment. Count stitches and rows over 10 cm. If you count more stitches or rows, switch to larger needles. If you count fewer stitches or rows, switch to smaller needles.

ABBREVIATIONS

st(s) = stitch(es) · **sl** = slip · **rnd(s)** = round(s) · **beg** = begin(ning) · **meas** = measures · **patt** = pattern · **rem** = remain(ing) · **pm** = place marker · **BOR** = beginning of round · **rep cont** = repeat continuously · **col** = color · **RS** = right side · **WS** = wrong side · **k** = knit · **k2tog** = knit 2 together · **p** = purl · **p2tog** = purl 2 together · **skp** = slip 1 stitch as if to knit, knit 1 stitch, pass slipped stitch over knitted stitch · **sk2p** = slip 1 stitch as if to knit, knit 2 together, pass slipped stitch over knitted stitch · **s2kp** = slip 2 stitches as if to knit, k 1 stitch, pass slipped stitches over knitted stitch · **tbl** = through the back loop · **wyif** = with yarn in front of work · **wyib** = with yarn in back of work · **M1L** = lift strand between sts from front to back and knit this strand through the back loop · **M1R** = lift strand between sts from the back and knit this strand through the front loop · **inc** = increase · **dec** = decrease · **yo** = yarn over · **ch** = chain · **sl st** = slip stitch · **sc** = single crochet · **dc** = double crochet · **hdc** = half double crochet