



© Lana Grossa GmbH

Design 34 – Filati Journal 70

COAT GIGANTE



Size 36 – 40 (42 – 46)

Instructions are given for smaller size. Figure in parenthesis refers to larger size. When only one figure is given, it applies to both sizes.

Materials: 500 (600) g of Lana Grossa **Gigante** (70% fine alpaca, 30% polyamide; 300 m/100 g) in Dark Blue/Night Blue/Grey Blue/Grey (**col 7**). Size 7 mm needles; 2 stitch holders.

Garter selvage: Always knit first and last st.

Two-stitch selvage: At beg of row, sl 1 pwise wyif, k1. At end of row, sl 1 pwise wyif, k1.

Rib patt: K4, p4. On foll rows work sts as they appear.

Rev St st: P on RS, k on WS.

Gauge: 12 sts and 20 rows = 10 x 10 cm in rev St st on size 7 mm needles.

Back: Using size 7 mm needles cast on 78 (86) sts. Next row (WS): Garter selvage; *p4, k4*, rep *-* to last 5 sts, p4 (*k4, p4*, rep *-* to last 5 sts, k4); garter selvage st. Work in rib patt as set by last row for a total of 61 rows and piece meas 30 cm from cast-on. Work in rev St st for 104 (96) rows and piece meas 52 (48) cm from end of rib patt. A total of 165 (157) rows has been worked and piece meas 82 (78) cm from cast-on. Place marker in first and last st on last WS row to indicate beg of armholes. Cont for 52 (60) rows and piece meas 26 (30) cm from armhole markers. Bind off all sts. Mark center 22 sts for neck.

Left front: Using size 7 mm needles cast on 47 (51) sts. Next row (WS): Garter selvage; *k4, p4*, rep *-* to last 6 sts, k4

(*p4, k4*, rep *-* to last 2 sts), two-stitch selvage. Work in rib patt as set by last row for a total of 61 rows and piece meas 30 cm from cast-on. Work in rev St st for 104 (96) rows and piece meas 52 (48) cm from end of rib patt. A total of 165 (157) rows has been worked and piece meas 82 (78) cm from cast-on. Place marker in last st on last WS row to indicate beg of armhole. Cont for 52 (60) rows and piece meas 26 (30) cm from armhole marker. Next row (RS): Bind off first 28 (32) sts = 19 sts rem for collar. Cont in rev St st over collar sts for 10 cm, ending with a WS row. Place sts on holder, cut yarn.

Right front: Using size 7 mm needles cast on 47 (51) sts. Next row (WS): Two-stitch selvage; *k4, p4*, rep *-* to last 5 sts, k4 (*k4, p4*, rep *-* to last 1 st); garter selvage. Complete as given for left front, placing armhole marker at left edge and binding off the 28 (32) shoulder sts at beg of WS row.

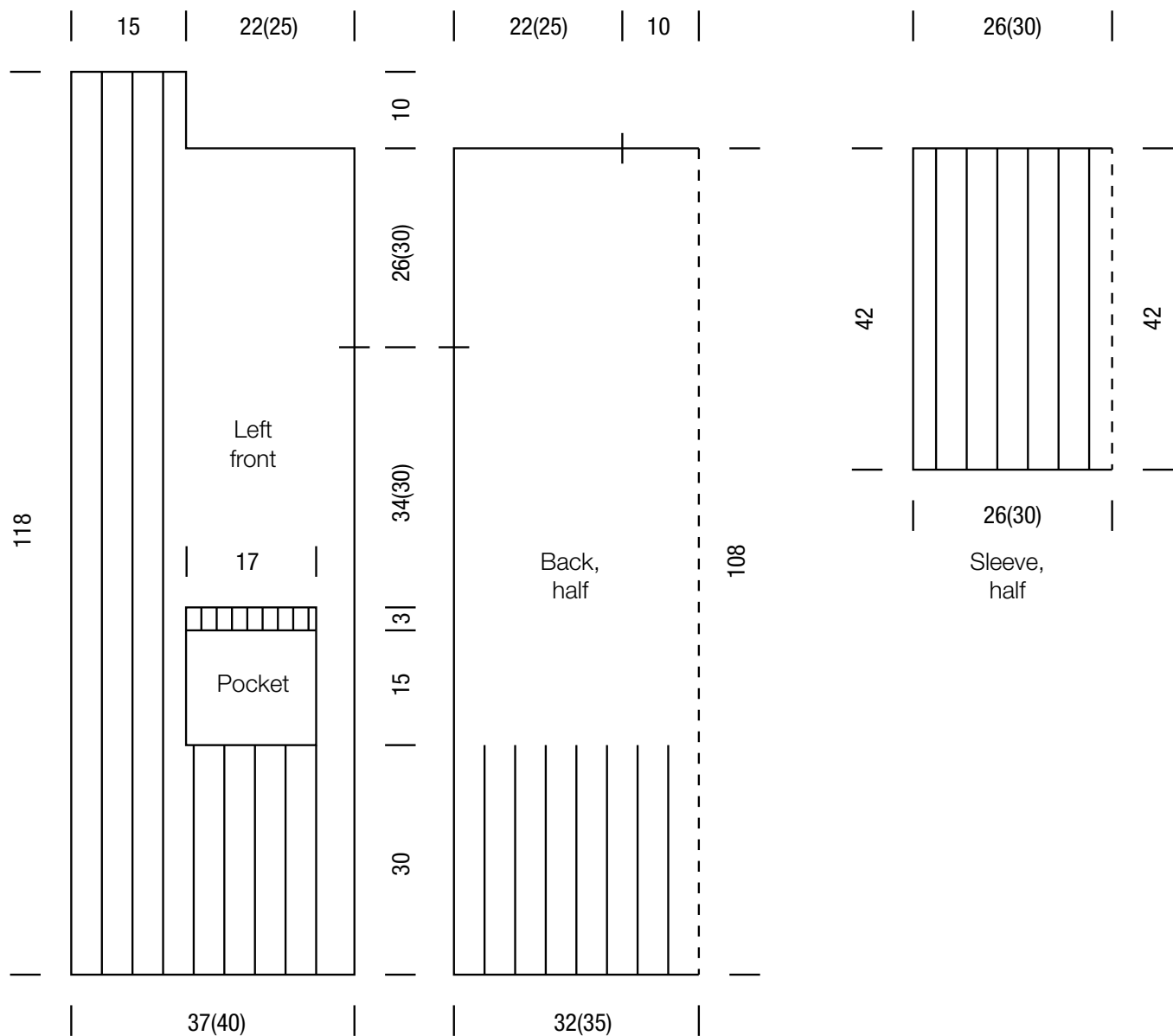
Pockets: Make 2. Using size 7 mm needles cast on 22 sts. Beg and end with a WS row work in rev St st for 29 rows. Next row (RS): Garter selvage; *k4, p4*, rep *-* to last 5 sts, k4, garter selvage. Work in rib patt as set by last row for a total of 6 rows = 3 cm. Bind off all sts in patt.

Sleeves: Using size 7 mm needles cast on 66 (74) sts. Next row (WS): Garter selvage; p2, *k4, p4*, rep *-* to last 7 sts, k4, p2; garter selvage st. Work in rib patt as set by last row for a total of 85 rows and piece meas 42 cm from cast-on. Bind off all sts in patt.

Finishing: Pin pieces to measurements and block. Referring to schematic for placement, sew pockets to fronts. Sew shoulder seams. Graft collar halves tog, then sew collar to back neck. Sew on sleeves between markers. Sew side and sleeve seams.

COAT · GIGANTE

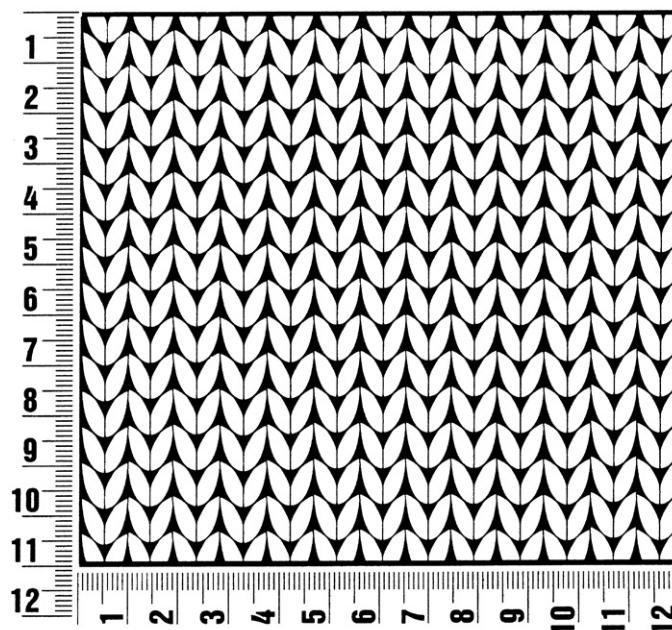
Design 34 – Filati Journal 70



Gauge Swatch

Before you begin ...

...make a gauge swatch. Use the recommended needles, yarns and pattern stitch for your gauge swatch. It should measure approx. 12 cm x 12 cm. Cast-on and bind-off rows, as well as selvedge stitches should not be included in the measurement. Pin your swatch and block it as you would the finished pieces of the garment. Count stitches and rows over 10 cm. If your gauge swatch is too small, switch to larger needles. If your gauge swatch is too big, switch to smaller needles.



Abbreviations

beg = begin(ning) · **ch** = chain · **cont** = continue · **dec** = decreas(e)(ing) · **inc** = increas(e)(ing) · **k** = knit · **kwise** = as if to knit
meas = measures · **M1L** = lift strand between sts from front to back and knit this strand through the back loop · **M1R** = lift strand between sts from the back and knit this strand through the front loop · **patt** = pattern · **pm** = place marker · **p** = purl
pwise = as if to purl · **rem** = remain(ing) · **rep** = repeat(s) · **rev St st** = reverse stockinette stitch · **rnd(s)** = round(s) · **RS** = right side · **sc** = single crochet · **skp** = slip 1 stitch as if to knit, knit 1 stitch, pass slipped stitch over knitted stitch · **sk2p** = slip 1 stitch as if to knit, knit 2 together, pass slipped stitch over knitted stitch · **s2kp** = slip 2 stitches as if to knit, k 1 stitch, pass slipped stitches over knitted stitch · **sl** = slip · **st(s)** = stitch(es) · **St st** = stockinette stitch · **tbl** = through the back loop · **tog** = together · **wyib** = with yarn in back of work · **wyif** = with yarn in front of work · **WS** = wrong side · **yo(s)** = yarn over(s)

Publisher's Info

Publisher: Lana Grossa GmbH, Gaimersheim, www.lana-grossa.com

Photographer: Nicolas Olonetzky, www.nicolasolonetzky.com