



© Lana Grossa GmbH

Design 49 – Classici 29

MEN'S JACKET COOL MERINO BIG

MEN'S JACKET · COOL MERINO BIG

Design 49 – Classici 29



Size 48 (50/52, 54)

Instructions are given for first size. Figures in parenthesis refer to larger sizes. When only one figure is given, it applies to all sizes.

Materials: 700 (750, 800) g of Lana Grossa **Cool Merino Big** (90% Merino wool, 10% polyamide; 90 m/50 g) in Burgundy (**col 228**). Size 5 and 7 mm needles; cable needle [cn]; five 28 mm buttons [by Union Knopf, item 451974, col burgundy].

Rib patt: K1, p1. On foll rows work sts as they appear.

St st: K on RS, p on WS.

Chart patt: Multiple of 12. Chart shows RS rows only. Read RS rows from right to left. On WS rows purl all sts. Rep rows 1 – 16.

Selvage sts: Always knit first st tbl, sl last st pwise wyif.

Two-stitch selvage: At beg of row, sl 1 pwise wyif, k1. At end of row, sl 1 pwise wyif, k1.

Slip st rib: Row 1 (RS): [P1, sl 1 kwise wyib] 4 times, p1. Row 2 (WS): [K1, p1] 4 times, k1. Rep rows 1 and 2 for slip st rib. Note: When slipping sts, pull yarn tight.

Full-fashion decrease 1: At beg of RS row, selvage st, k2, k2tog; at end of RS row, work to last 5 sts, skp, k2, selvage st.

Full-fashion decrease 2: At beg of RS row, two-stitch selvage, 9-st slip st rib, k2, k2tog; at end of RS row, work to last 15 sts, skp, k2, 9-st slip st rib, two-stitch selvage.

Skp: Sl 1 kwise, k1, pass slipped st over knitted st.

Full-fashion increase: On RS row: M1R, 3 sts in from each edge.

Gauge: 16 sts and 20 rows = 10 x 10 cm in chart patt on size 7 mm needles.

Back: Using size 5 mm needles cast on 98 (104, 110) sts. Beg and end with a WS row and working first and last st as selvage sts, work in rib patt until piece meas 8 cm from cast-on. Change to size 7 mm needles. Next row (RS): Selvage st, 0 (3, 0) sts in St st, 96 (96, 108) sts in chart patt, working patt rep 8 (8, 9) times, 0 (3, 0) sts in St st, selvage st. Work in patt as set by last row until piece meas 42 cm from cast-on, ending with a WS row.

Shape armholes: Bind off 4 sts at beg of next 2 rows. Working full-fashion dec 1, dec 1 st at each end of next 7 RS rows = 76 (82, 88) sts. Cont until armhole meas 24 (25, 26) cm, ending with a WS row.

Shape shoulders and neck: At each shoulder edge bind off 3 sts 2 times, 4 sts 4 times (4 sts 5 times, 5 sts 1 time / 4 sts 2 times, 5 sts 4 times). At same time, when piece meas 4 cm from beg of shoulder shaping, shape neck: Next row (RS): Bind off center 26 sts. Working each side separately, bind off 2 sts at each neck edge 1 time, 1 st 1 time. No sts rem.

Right front: Using size 5 mm needles cast on 60 (64, 66) sts. Next row (WS): Selvage st, 48 (48, 54) sts in rib patt, 9-st slip st rib, two-stitch selvage. Work in patt as set by last row until piece meas 8 cm from cast-on, decreasing 0 (1, 0) st at beg of last WS row = 60 (63, 66) sts. Change to size 7 mm needles. Next row (RS): Two-stitch selvage, 9-st slip st rib, 48 (48, 54) sts in chart patt, working patt rep 4 (4, 4.5) times, 0 (3, 0) sts in St st, selvage st. Work in patt as set by last row until piece meas 42 cm from cast-on, ending with a RS row.

Shape armhole and neck: Bind off 4 sts at beg of next WS row. Working full-fashion dec 1, dec 1 st at end of next 7 RS rows. At same time, when armhole meas 2 (3, 4) cm, shape neck: Working full-fashion dec 2, dec 1 st at beg of next RS row, then every foll RS row 10 times, then every 6th row 5 times and when same length as back to shoulders, shape shoulder at beg of WS rows same as for back = 11 sts rem for neckband. Cast on 1 st at left edge of neckband (work as selvage st throughout) = 12 sts for neckband and cont in patt for 12 cm. Bind off all sts.

Left front: Work same as right front, reversing all shaping and patt placement and working 5 buttonholes at beg of WS rows as foll: Two-stitch selvage, 2 sts in slip st rib, bind off 3 sts, work to end. On foll RS row, cast on 3 sts over bound-off sts. Work first buttonhole when piece meas 8 cm from cast-on, rem 4 buttonholes spaced 8 (8.5, 9) cm apart.


Sleeves: Using size 5 mm needles cast on 54 sts. Beg and end with a WS row and working first and last st as selvage sts, work in rib patt until piece meas 8 cm from cast-on, increasing 8 sts evenly across last WS row = 62 sts. Change to size 7 mm needles. Next row (RS): Selvage st; 60 sts in chart patt, working patt rep 5 times; selvage st. Maintaining selvage sts, cont to foll chart and shape sleeve: Working full-fashion inc, inc 1 st at each end of 11 (11, 9)th row, then every 10th row 6 times (then every 10th row 1 time, then every 8th row 6 times / then every 8th row 7 times, then every 6th row 1 time) = 76 (78, 80) sts. Work increased sts into patt. Cont in patt until piece meas 46 cm from cast-on, ending with a WS row.


Shape sleeve cap: Bind off 4 sts at beg of next 2 rows. Working full-fashion dec 1, dec 1 st at each end of next 10 RS rows. Work 1 WS row. Bind off rem 48 (50, 52) sts.

Finishing: Pin pieces to measurements and block. Sew shoulder seams. Sew bound-off edges of neckbands tog, then sew neckband to back neck. Sew in sleeves. Sew side and sleeve seams. Sew on buttons.

Design 49 – Classici 29



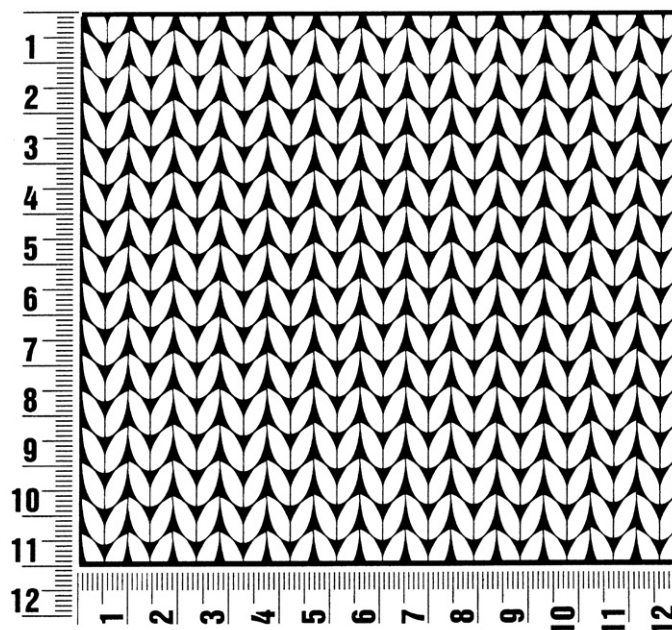
 = sl 3 sts to cn and hold in front of work, k3,
 then k3 from cn

 = sl 3 sts to cn and hold in back of work, k3,
 then k3 from cn

Gauge Swatch

Before you begin ...

...make a gauge swatch. Use the recommended needles, yarns and pattern stitch for your gauge swatch. It should measure approx. 12 cm x 12 cm. Cast-on and bind-off rows, as well as selvedge stitches should not be included in the measurement. Pin your swatch and block it as you would the finished pieces of the garment. Count stitches and rows over 10 cm. If your gauge swatch is too small, switch to larger needles. If your gauge swatch is too big, switch to smaller needles.



Abbreviations

beg = begin(ning) · **ch** = chain · **cont** = continue · **dec** = decreas(e)(ing) · **inc** = increas(e)(ing) · **k** = knit · **kwise** = as if to knit
meas = measures · **M1L** = lift strand between sts from front to back and knit this strand through the back loop · **M1R** = lift strand between sts from the back and knit this strand through the front loop · **patt** = pattern · **pm** = place marker · **p** = purl
pwise = as if to purl · **rem** = remain(ing) · **rep** = repeat(s) · **rev St st** = reverse stockinette stitch · **rnd(s)** = round(s) · **RS** = right side · **sc** = single crochet · **skp** = slip 1 stitch as if to knit, knit 1 stitch, pass slipped stitch over knitted stitch · **sk2p** = slip 1 stitch as if to knit, knit 2 together, pass slipped stitch over knitted stitch · **s2kp** = slip 2 stitches as if to knit, k 1 stitch, pass slipped stitches over knitted stitch · **sl** = slip · **st(s)** = stitch(es) · **St st** = stockinette stitch · **tbl** = through the back loop · **tog** = together · **wyib** = with yarn in back of work · **wyif** = with yarn in front of work · **WS** = wrong side · **yo(s)** = yarn over(s)

Publisher's Info

Publisher: Lana Grossa GmbH, Gaimersheim, www.lana-grossa.com

Photographer: Milan Soos, www.milansoos.com