

Charts A and B

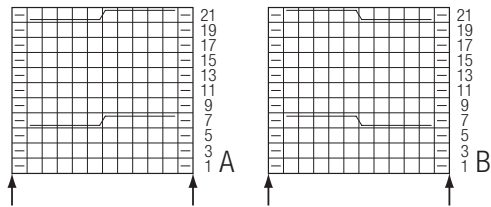
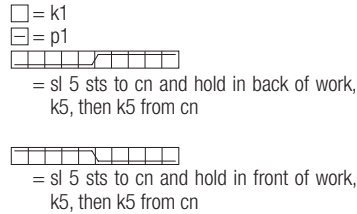


Chart key:



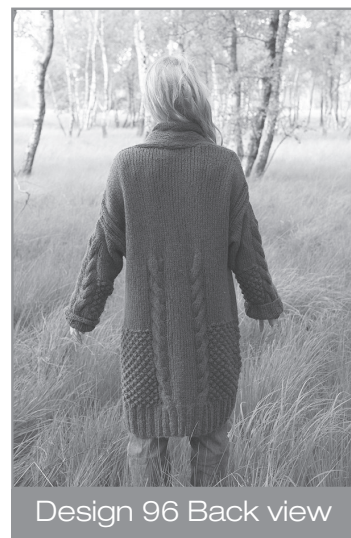
rep from * to last st, selvage st. **Row 3:** Selvage st, purl to last st, selvage st. **Row 4:** Selvage st, * p3tog, [k1, p1, k1] all in next st; rep from * to last st, selvage st. Repeat rows 1 – 4 throughout.

Gauge: 12 sts and 17 rows = 10 x 10 cm in stockinette on size 10 mm needles; 14 sts and 17 rows = 10 x 10 cm in trinity pat on size 10 mm needles.

Back: With size 9 mm needles, cast on 62 (66) sts. Beg with a WS row and working first st after selvage st as p1 and last st before selvage st as p1, work in rib pat until back measures 10 cm from cast-on, ending with a WS row. Inc 14 sts evenly across last WS row = 76 (80) sts. Change to size 10 mm needles. Next RS row: Selvage st, work 20 sts in trinity pat, 12 sts in cable pat A, 10 (14) sts in stockinette, 12 sts in cable pat B, 20 sts in trinity pat, selvage st. Work in pat as established until back measures 35 cm from cast-on, ending with a WS row. Next RS row: Selvage st, work 20 sts in stockinette and at same time dec 2 sts = 18 sts in stockinette, 12 sts in cable pat A, 10 (14) sts in stockinette, 12 sts in cable pat B, 20 sts in stockinette and at same time dec 2 sts = 18 sts in stockinette, selvage st = 72 (76) sts. Work in pat as established for 20 cm, ending with a WS row. Next RS row: Selvage st, work across all sts in stockinette and at same time, dec 5 sts evenly across both cable pat A and cable pat B = 62 (66) sts. Work in pat as established for 7 cm, ending with a WS row. Place a locking marker in first and last st of last row. Sleeve increase row: Inc 1 st at beg and end of next RS row, then every foll 4th row 7 times as foll: Selvage st, k2, M1R, work to last 3 sts, M1L, k2, selvage st = 78 (82) sts. Work increased sts into rib pat. Cont in pat as established until back measures 20 (21) cm from markers, ending with a WS row. Shape shoulders: Bind off 5 sts at beg of next 2 rows, then 4 sts at beg of next 12 rows (then 5 sts at beg of next 4 rows and 4 sts at beg of next 8 rows). At same time, on 11th row of shoulder shaping, shape neck: Bind off center 16 sts. Working each side separately, bind off 2 sts at each neck edge once. No sts remain.

Right front: Work same as for left front, reversing all shaping and pattern placement.

Sleeves: With size 9 mm needles, cast on 38 sts. Beg with a WS row and working first st after selvage st as p1 and last st before selvage st as p1, work in rib pat until sleeve measures 14 cm from cast-on, ending with a WS row. Inc 20 sts evenly across last WS row = 58 sts. Change to size 10 mm needles. Next RS row: Selvage st, work 16 sts in trinity pat, 12 sts in cable pat A, 12 sts in cable pat B, 16 sts in trinity pat, selvage st. Work in pat as established until sleeve measures 27 cm from cast-on, ending with a WS row. Next RS row: Selvage st, work 16 sts in stockinette and at same time, dec 2 sts = 14 sts in stockinette, work 12 sts in cable pat A, 12 sts in cable pat B, 16 sts in stockinette and at same time, dec 2 sts

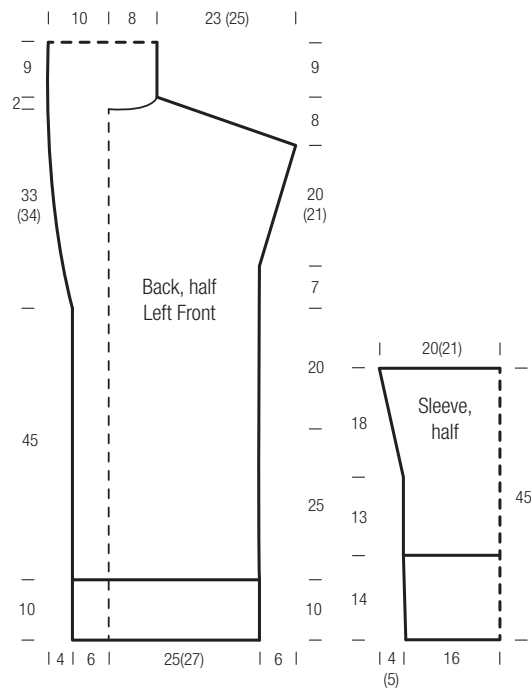


Design 96 Back view

= 14 sts in stockinette, selvage st = 54 sts. Work in pat as established and shape sleeve as foll: Inc 1 st at beg and end of next RS row, then every foll 6th row 4 times (then every foll 6th row twice, then every foll 4th row 3 times) = 64 (66) sts. At same time, when sleeve measures 39 cm from cast-on, work in stockinette across all sts and at same time, dec 5 sts evenly across

both cable pat A and cable pat B = 54 (56) sts. Cont until sleeve measures 45 cm from cast-on, then bind off all sts loosely.

Finishing: Pin pieces to measurements and block. Sew shoulder seams. Graft left and right collar extensions tog, then sew side edges of collar extensions to back neck edge. Sew on sleeves between sleeve markers. Sew side and sleeve seams.



Design 97

SHAWL - Silkchair Print

Approx. 60 x 190 cm

Materials: 150 g of Lana Grossa **Silkchair Print** (70% superkid mohair, 30% silk; 400m/50g) in Blue/Purple/Yellow/Raspberry/Grey (**col 334**).

Size 9 mm needles; size 9 mm circular needles, 80 and 120 cm long.

Note: Work with 3 strands of yarn held tog throughout.

Garage st: K every row.

Main pattern: Work according to chart. Numbers at right edge of chart indicate RS rows; numbers at left edge of chart indicate WS rows. Work RS rows from right to left, work WS rows from left to right. Work rows 1 – 19 once = 29 sts, then repeat rows 14 – 19 throughout, continuing to work increases as set.

Gauge: 9 sts and 22 rows = 10 x 10 cm in main pat on size 9 mm needles and 3 strands of yarn held tog.

Chart

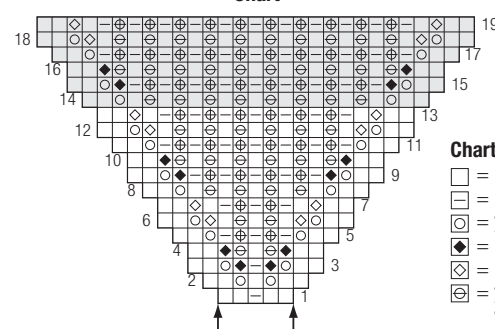
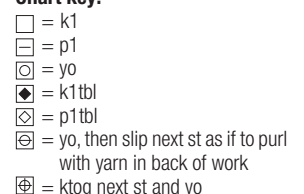


Chart key:



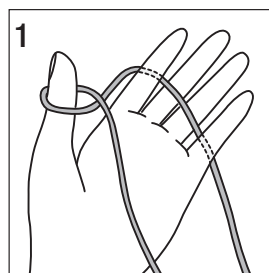
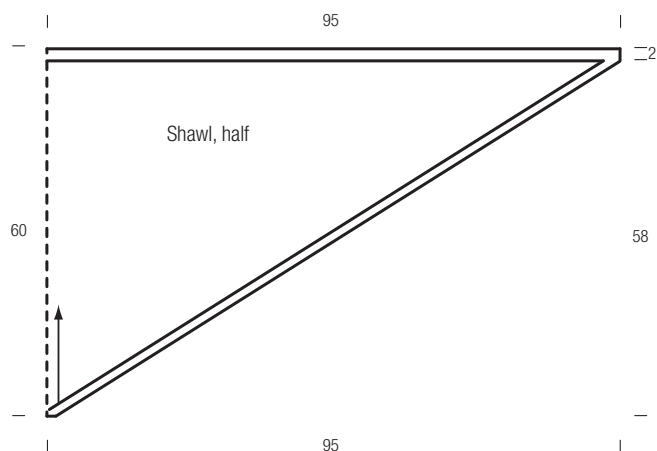
Instructions: Shawl is worked from the bottom up. Arrow on schematic shows direction of work. With size 9 mm needles and 3 strands of yarn held tog, cast on 5 sts and work in main pat according to chart until 171 sts are on the needle. Change to circular needles as stitch count increases. When work measures

58 cm and 128 chart rows have been worked, work in garter st for 4 rows, then loosely bind off all sts.

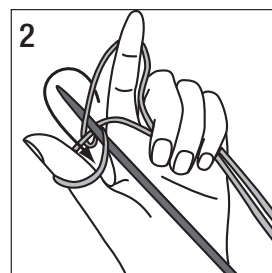
Finishing: Pin piece to measurements and block.

Knitting Lesson

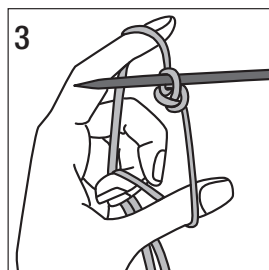
LONG-TAIL CAST ON



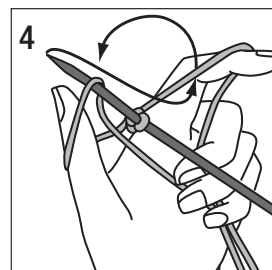
Wrap the yarn around the fingers of your left hand as shown in illustration 1 with the yarn behind your pinkie, in front of your ring and middle finger and behind your index finger. Wrap the yarn from front to back around your left thumb and hold the yarn across your palm



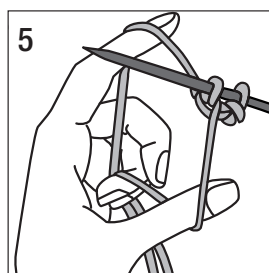
Insert the needle upward through the yarn on your thumb and draw the yarn on your left hand through the loop on your thumb to form a stitch



Remove the yarn from your left thumb and pull the loose end to tighten the stitch



Wrap the yarn from front to back around your left thumb again



Repeat from illustration 2 until the required number of stitches has been cast on

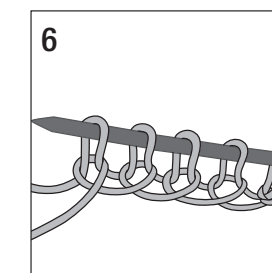
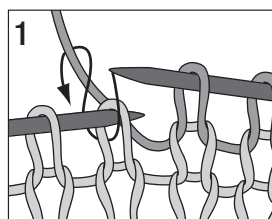
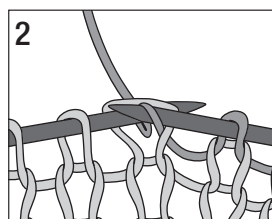


Illustration 6 shows the cast on stitches

THE KNIT STITCH

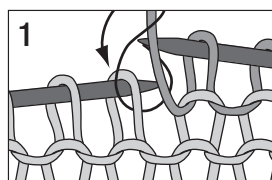


With the yarn at the back of the work, insert the right needle as shown through the front of the first stitch on the left needle

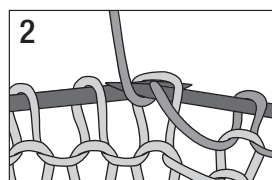


Wind the yarn over the point of the right needle, draw the yarn back through the stitch, forming a loop on the right needle. Slip the original stitch off the left needle

THE PURL STITCH

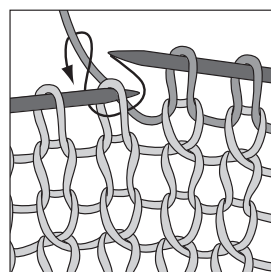


With the yarn at the front of the work, insert the right needle as shown through the front of the first stitch on the left needle



Wind the yarn from front to back over the point of the right needle, draw the yarn back through the stitch, forming a loop on the right needle. Slip the original stitch off the left needle

WORKING INTO THE BACK OF A STITCH



This is a technique that is used to twist a stitch. Insert the right needle from right to left into the back of the next stitch on the left needle, wrap yarn around the point of the right needle and draw a loop back through the stitch, dropping the stitch off the left needle.

All buttons and closures provided by





OPEN-FRONT STYLING
and striking textures inform
this fashion-savvy coat.
An instant classic!
The generous shawl adds
the perfect fashion accent.
Design 96 • Coat: Lala
Berlin Softness. Design
97 • Shawl: Silkhair Print.

Filati Journal
Spring/Summer 2016
will be for sale end of January.



FACHGESCHÄFT
FILATI

MODE
MIT
WOLLE

