

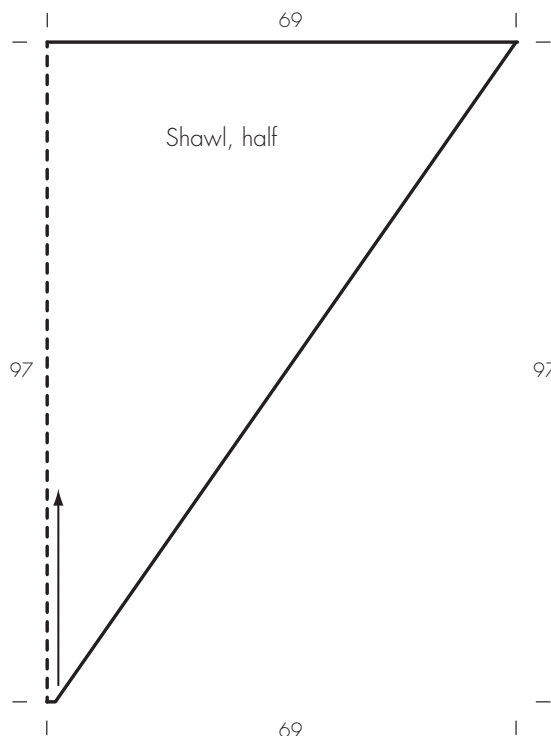
hook; 200 ml fragrance diffuser by 'Hommage d'ipuro'.

Crochet pattern: Worked in rnds according to chart. Numbers on chart indicate beg of rnds. Work the 2-st pat rep between arrows around. Beg rnds 1 and 8 with ch 1, sl st to first sc to join the rnd. Beg rnds 2 – 7 with ch 3, then work bobbles according to chart. At beg of rnd, work first sl st in top of first bobble, ch 1, work 2nd sl st into next ch-sp. This shifts beg of rnds to the left. At beg of rnd 7, work 1 sl st in top of first bobble. Beg rnds 9 and 10 with ch 3, sl st to top turning-ch to join the rnd. On rnd 9, work 1 dc in every other sc. On rnd 10, work between sts of rnd 9. Work rnds 1 – 10 once.

Gauge: 25 sts [= 12.5 bobbles] and 6 rnds [= chart rnds 2 – 7] = 10 x 7 cm in crochet pat with size 2.5 mm crochet hook.

Instructions: Crochet one cover in each color. Ch 60, sl st to first ch to form ring, then work rnds 1 – 10 of the crochet pat according to chart. Rnd 1: Work 1 sc in each ch around = 60 sc. Rnds 2 – 7: 30 bobbles per rnd. Rnd 8: 60 sc. Rnds 9 and 10: 30 dc per rnd. Cut yarn and fasten off.

Finishing: Thread a long strand of yarn through foundation ch. Pull cover over diffuser. Pull strand of yarn at bottom edge tight and knot.



Instructions: Shawl is worked from the bottom up. With size 5 mm crochet hook and Multi, ch 2 + ch 3 (count as 1 dc). Work in crochet pat according to chart until shawl measures 97 cm, then cut yarn and fasten off.

Chart key:

- = 1 chain (ch)
- † = 1 double crochet (dc)
- = [yo hook, insert hook in st and pull up a loop] 3 times, yo hook and draw through all loops on hook

Finishing: Pin shawl to measurements and block. Make and attach fringe: For each fringe, cut 4 strands of Roma Degradè, each strand 30 cm long. Insert crochet hook into fabric from WS, fold 4 strands of yarn in half to form a loop, draw loop through fabric, then draw yarn ends through loop and tighten. Attach 60 fringe along each side edge as foll: [2 fringe in next row, 1 fringe in next

row] 18 times, then 1 fringe in each of next 6 rows. Trim fringe to 14 cm.



DESIGN 13

SHAWL

Approx. 97 x 138 cm, excluding fringe

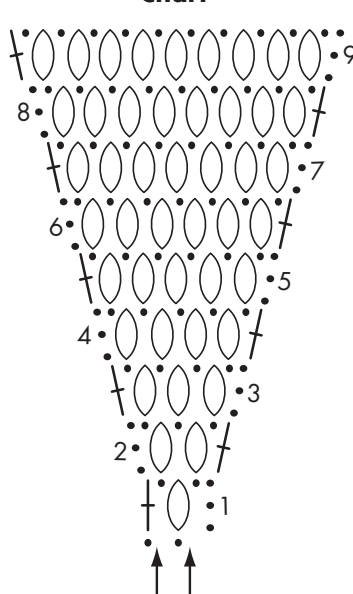
Materials: 550 g of Lana Grossa **Multi** (45% cotton, 45% acrylic, 10% polyamide; 100 m/50 g) in Light Red/Red/Red-Brown/Orange (col 6) and 100 g of Lana Grossa **Roma Degradè** (100% cotton; 105 m/50 g) in Pink/Plum/Grey-Violet/Copper (col 107). Size 5 mm crochet hook.

Crochet pattern: Worked back and forth in rows according to chart. Numbers at right and

left edge of chart indicate rows. Work first st on first row in 5th ch from hook. Beg each row with ch 3 (count as 1 dc). Work increases as shown on chart. Always work into chain spaces. Work rows 1 – 9 once, then repeat rows 8 and 9 and continue to work increases as established.

Gauge: 11.5 sts and 8 rows = 10 x 10 cm in crochet pat with size 5 mm crochet hook and Multi.

Chart



DESIGN 14

LACE WRAP

Approx. 190 x 78 cm excluding crocheted edging

Materials: 200 g of Lana Grossa **Silkhair Print** (70% superkid mohair, 30% silk; 400 m/ 50 g) in Orange/Petrol/Copper/Khaki (col 343). Size 3.5 mm circular needle, 80 cm long; size 3 mm crochet hook.

Lace pattern: Work according to chart on page 68. Numbers at right edge of chart indicate RS rows; on WS rows, work sts as they appear or according to chart key. Beg chart pat with sts before first arrow, work 36 sts between arrows for pat repeat, end with sts after 2nd arrow. Work rows (1 – 16) 36 times, then work rows 1 and 2 once = 578 rows.

Crocheted edging: Worked over 1 rnd according to crochet chart. Join yarn with a sl st to knitted piece. Beg rnd with ch 1 (count as 1 sc). Work pat rep between arrows around. Sl st to first ch, then cut yarn and fasten off.

Gauge: 22 sts and 30.5 rows = 10 x 10 cm in lace pat on size 3.5 mm needles.

Instructions: With size 3 mm circular needle, cast on 175 sts. Next WS row: Knit all sts. Next RS row: Work in lace pat according to chart, working the 3 sts before first arrow once, then working the 36-st pat rep between arrows 4 times, then working the 28 sts after the 2nd arrow once. When 578 rows have been worked in lace pat and shawl measures approx. 190 cm from caston, loosely bind off all sts.

Finishing: Pin shawl to measurements and block. With size 3 mm crochet hook, join yarn to edge of shawl and work the 1 rnd of the crochet edging according to crochet chart, working 25 clusters along each short edge and 50 clusters along each long edge. Carefully weave in all ends.

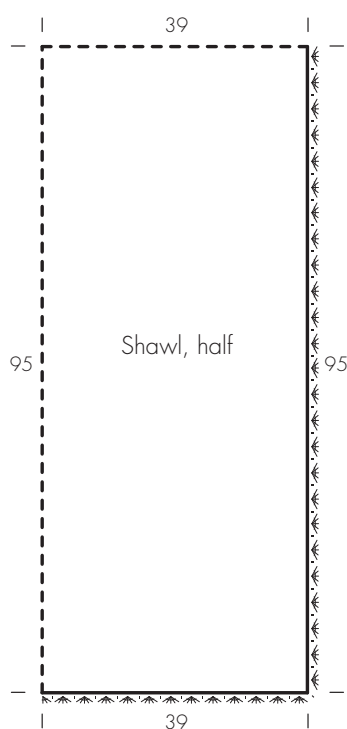
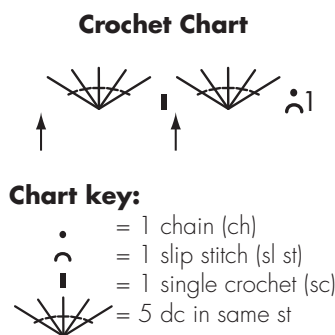
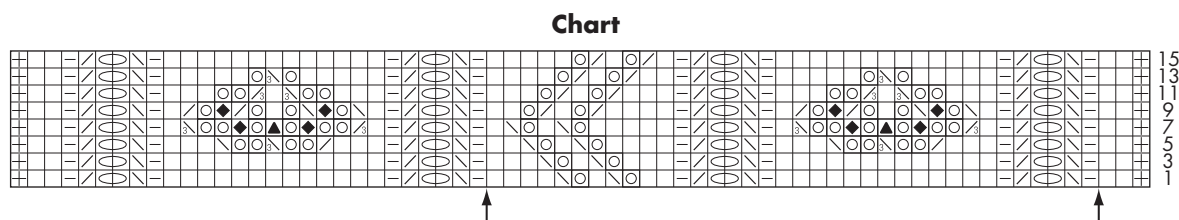


Chart key:

- ⊞ = selvage st
- = k1
- ▢ = p1
- ⊙ = yo on RS, p on WS
- ⊙⊙ = yo twice on RS, p first yo and k 2nd yo on WS
- ⊕ = yo on RS, [p1, k1] into yo on WS
- ◆ = k1tbl
- ▧ = k2tog
- ▨ = k3tog
- ▲ = S2KP: slip 2 sts as if to knit, k1, pass slipped sts over knitted st
- ▤ = SKP: slip 1 st as if to knit, k1, pass slipped st over knitted st
- ▥ = SK2P: slip 1 st as if to knit, k2tog, pass slipped st over knitted st



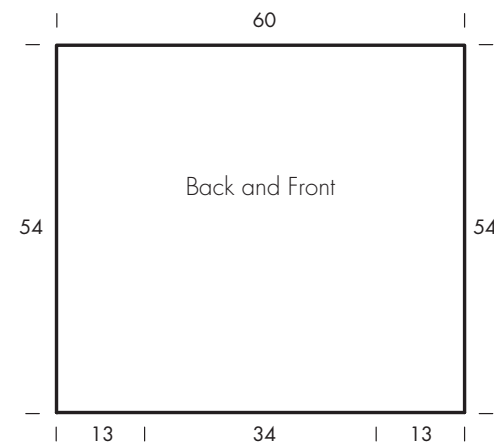
PILLOW COVER

Approx. 54 x 60 cm

Materials: 250 g of Lana Grossa **Opera** (65% cotton, 25% polyamide, 5% viscose, 5% sequins; 100 m/50 g) in Charcoal (**col 14**) and 100 g each in Nougat (**col 9**), Petrol (**col 5**), Dark Grey (**col 13**) and Pink (**col 3**). Size 4.5 mm needles; 60 x 60 cm pillow form.

Garage st: K every row.

Honeycomb pattern: Work according to chart. Numbers at right edge of chart indicate

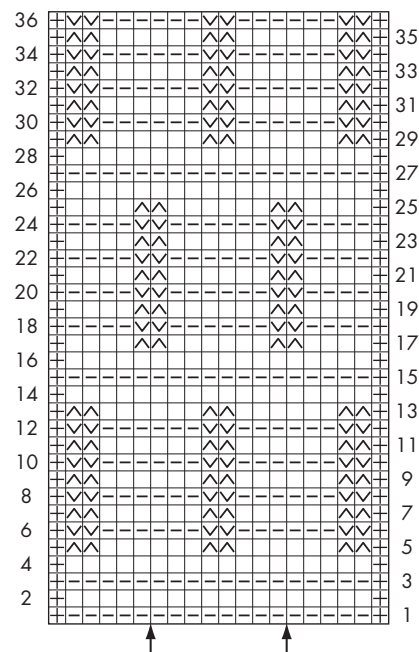


RS rows; numbers at left edge of chart indicate WS rows. Beg chart pat with sts before first arrow, work 8 sts between arrows for pat repeat, end with sts after 2nd arrow. Work rows 1 – 36 once, then repeat rows 13 – 36 throughout.

Stripe Sequence: Work * 12 rows each with Charcoal, Petrol, Nougat, Dark Grey and Pink = 60 rows. Rep from * throughout.

Gauges: On size 4.5 mm needles, 19 sts and 33.5 rows = 10 x 10 cm in garter st; 21.5 sts and 37.5 rows = 10 x 10 cm in honeycomb pat.

Chart



Front: With size 4.5 mm needles and Charcoal, cast on 132 sts. Work in honeycomb pat according to chart and follow stripe sequence, working the 8-st pat rep 15 times across row. When 202 rows have been worked (last 10 rows with Petrol) and piece measures approx. 54 cm from cast-on, bind off all sts.

Back: With size 4.5 mm needles and Charcoal, cast on 114 sts and work in garter st for 54 cm. Bind off all sts.

Finishing: Pin pieces to measurements and block. Sew front to

back with mattress stitch, sewing 3 of the 4 seams. Insert pillow form, then sew remaining seam with mattress stitch.

Chart key:

- ⊞ = selvage st
- = k1
- ▢ = p1
- ▤ = slip 1 st as if to purl with yarn in back of work
- ▥ = slip 1 st as if to purl with yarn in front of work