

dles, cast on 39 (43) sts. Knit one WS row, then work in stockinette and shape sleeve as foll: Inc 1 st at beg and end of 14th (12th) row from cast-on, then every foll 14th (12th) row 6 (3) times, then every foll 10th row 0 (5) times = 53 (61) sts. Cont in stockinette until sleeve measures 47 cm from cast-on, ending with a WS row. Shape sleeve cap: Bind off 3 sts at beg of next 2 rows, 2 sts at beg of next 2 rows, 1 st at beg of next 24 rows and 2 (3) sts at beg of next 2 rows. Bind off remaining 15 (21) sts.

**Finishing:** Pin pieces to measurements and block. Sew shoulder

seams. With size 4 mm circular needle, pick up and knit 84 sts around neck edge. Join for working in rnds and knit 2 rnds. Next rnd [picot rnd]: \* K2tog, yo; rep from \* around. Next rnd: Knit. Loosely bind off all sts. Fold neckband to inside at picot rnd and sew down. Sew in sleeves. Sew side and sleeve seams.



## SHAWL

Approx. 70 x 180 cm excluding crocheted edging

**Materials:** 100 g of Lana Grossa **Silkhair Print** (70% superkid mohair, 30% silk; 400 m/50 g) in Ice Blue/Lilac/Light Olive/Orange-Red (**col 345**). Size 4 mm circular needles, 120 and 80 cm long; size 3 mm crochet hook.

**Lace pattern:** Work according to chart. Chart shows RS rows only; on all WS rows, work sts as they appear or according to chart key. Work the 43 sts between arrow a and b once, then work the 21 sts between arrow b and c 4 times, then work the 46 sts between arrow c and d once, then work the 21 sts between arrow d and e 4 times, then work the 43 sts between arrow e and f once. Work decreases as shown on chart = 3 sts are decreased

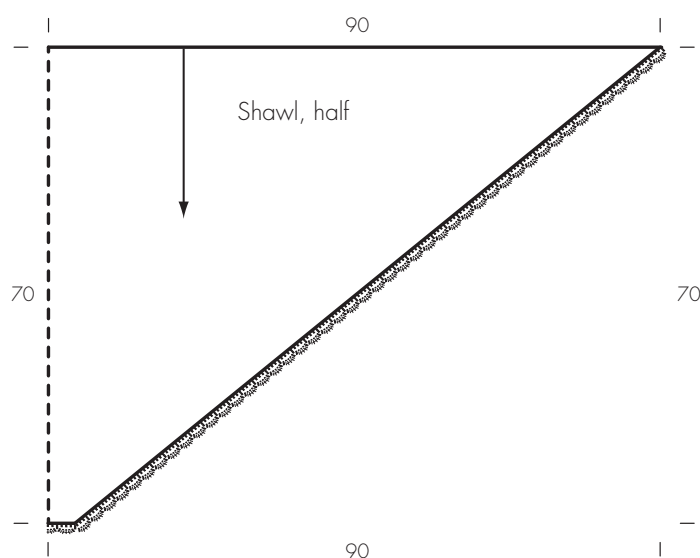
### Chart key:

- = 1 chain (ch)
- ◡ = 1 slip stitch (sl st)
- = 1 single crochet (sc)
- | = 1 half double crochet (hdc)
- † = 1 double crochet (dc)

over 4 rows. Work rows 1 – 96 once, then repeat the 48 rows shown in grey throughout and continue to work decreases as established, end working rows 1 and 2 once.

**Crocheted edging:** Work according to crochet chart back and forth in rows. Numbers at right and left edge of chart indicate rows. Join yarn with a slip stitch to one corner of finished shawl. Beg chart pat with sts before first arrow, work sts between arrows for pat repeat, end with sts after 2nd arrow. Work rows 1 – 3 once, then cut yarn and fasten off.

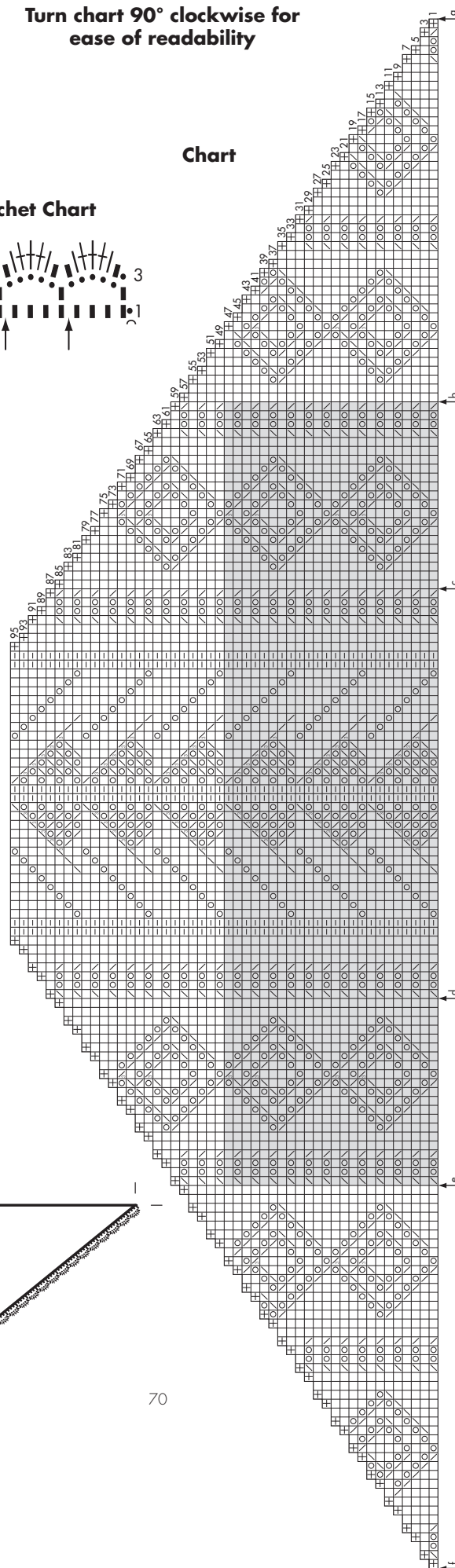
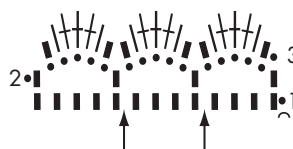
**Gauges:** 16.5 sts and 27.5 rows = 10 x 10 cm in lace pat



Turn chart 90° clockwise for ease of readability

### Chart

### Crochet Chart



### Chart key:

- ⊞ = selvage st
- = k1
- ▢ = p1
- ⊙ = yo on RS, p on WS
- ▧ = k2tog
- ▨ = k3tog
- ▩ = SKP: slip 1 st as if to knit, k1, pass slipped st over knitted st

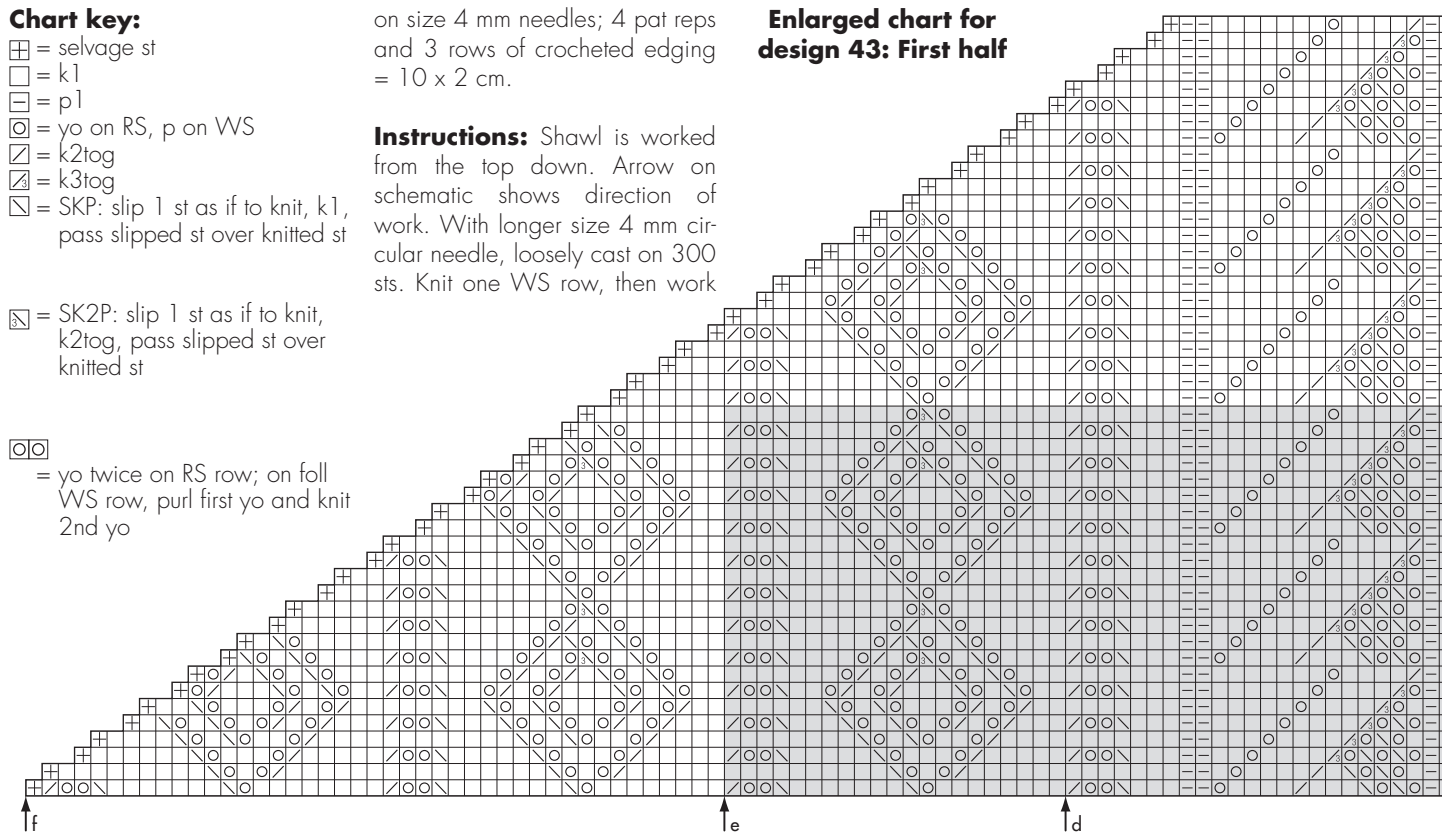
- ▩ = SK2P: slip 1 st as if to knit, k2tog, pass slipped st over knitted st

- ⊙⊙ = yo twice on RS row; on foll WS row, purl first yo and knit 2nd yo

on size 4 mm needles; 4 pat reps and 3 rows of crocheted edging = 10 x 2 cm.

**Instructions:** Shawl is worked from the top down. Arrow on schematic shows direction of work. With longer size 4 mm circular needle, loosely cast on 300 sts. Knit one WS row, then work

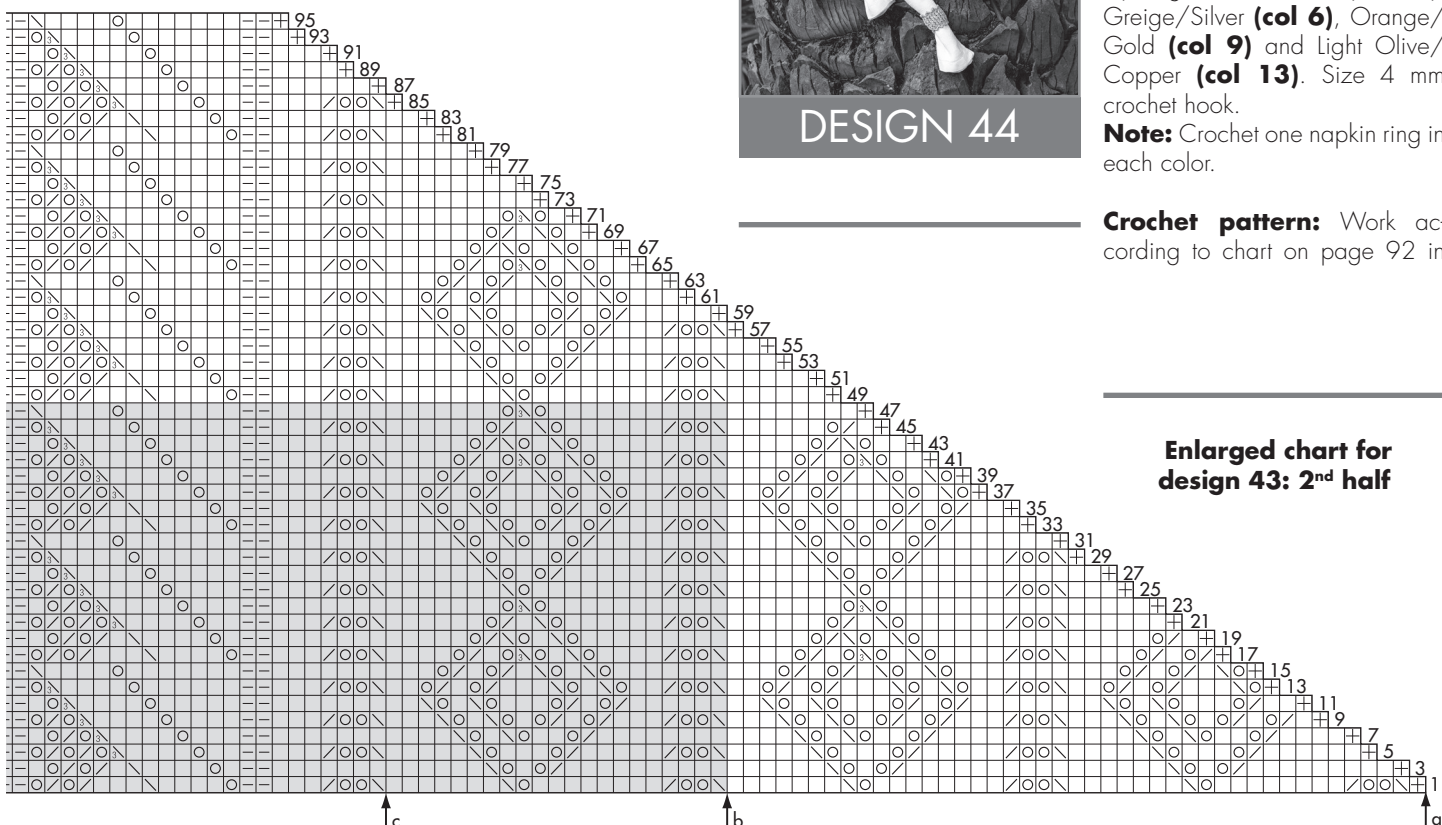
### Enlarged chart for design 43: First half



in lace pat according to chart. Change to shorter circular needle as stitch count decreases. Loosely bind off remaining 12 sts.

**Finishing:** Pin shawl to measurements and block. With size 3 mm crochet hook, work 1 row crab st [work single crochet from left to right] along cast-on edge. Work the crocheted edging according

to crochet chart along left side, bottom and right side edge = 46 arches along each side edge and 3 arches along bound-off edge. Work chart rows 1 – 3 once, then cut yarn and fasten off. Carefully weave in all ends.



DESIGN 44

### NAPKIN RINGS

Approx. 5 cm tall (including picot edge) and approx. 12 cm in circumference

**Materials:** 50 g each of Lana Grossa **Folio** (100% cotton; 100 m/50 g) in Grey-Green/Silver (**col 2**), Rosé/Silver (**col 3**), Light Blue/Silver (**col 4**), Greige/Silver (**col 6**), Orange/Gold (**col 9**) and Light Olive/Copper (**col 13**). Size 4 mm crochet hook.

**Note:** Crochet one napkin ring in each color.

**Crochet pattern:** Work according to chart on page 92 in

### Enlarged chart for design 43: 2nd half