

SHAWL



SHAWL

Size: Approx. 153 x 72 cm

Materials: 100 g of Lana Grossa **Silkhair** (70% superkid mohair, 30% silk; 210 m/25 g) in Green-Grey (**col 81**) and 50 g of Lana Grossa **Silkhair Print** (70% superkid mohair, 30% silk; 400 m/50 g) in Light Blue/Mint/Grey-Beige/Dark Grey (**col 347**). Size 4.5 mm crochet hook.

Filet crochet: Work according to chart 1. Beg rows with ch 3 (count as 1 dc) or ch 4 (count as 1 trc). Numbers at right edge of chart indicate RS rows; numbers at left edge of chart indicate WS rows. Work rows 1 – 5 once, then repeat rows 4 and 5 throughout, continuing to work increases as established.

Flower: Work according to chart 2. Join Silkhair Print with a sl st to crocheted fabric (see black arrow), ch 3 (count as 1 dc), 5 dc into dc of filet crochet, 6 dc into next ch2-sp, 6 dc into next dc. Continue in this manner, following grey line. Sl st to last square, then cut yarn and fasten off.

Gauge: 21 sts (= 7 squares) and 7.5 rows = 10 x 10 cm.

Instructions: With Silkhair, ch 9 and work filet crochet according to chart 1 for 54 rows = 107 squares and shawl measures approx. 72 cm from beg. Cut yarn and fasten off.

Finishing: Attach 27 flowers to shawl according to schematic. Make and attach fringe: For each fringe, cut 4 strands of Silkhair, each strand 50 cm long. Attach 1 fringe in each trc and each turning ch along side edges of shawl.

Chart 1

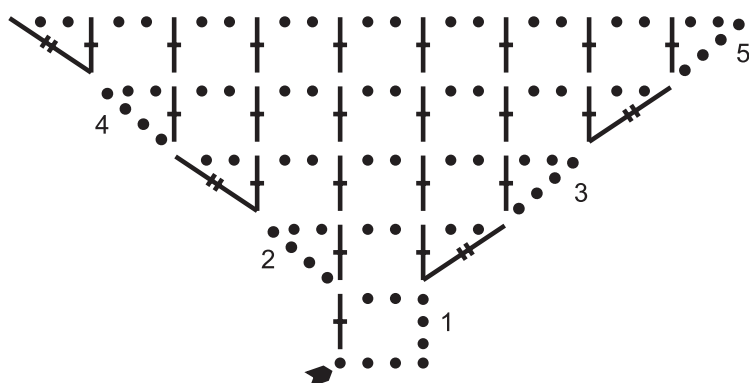


Chart 2

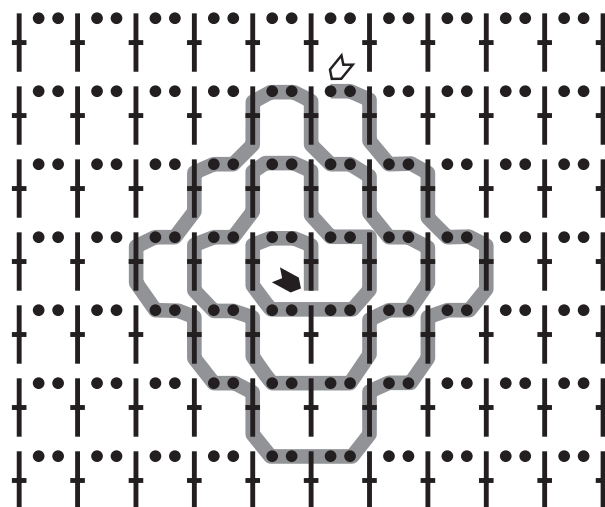
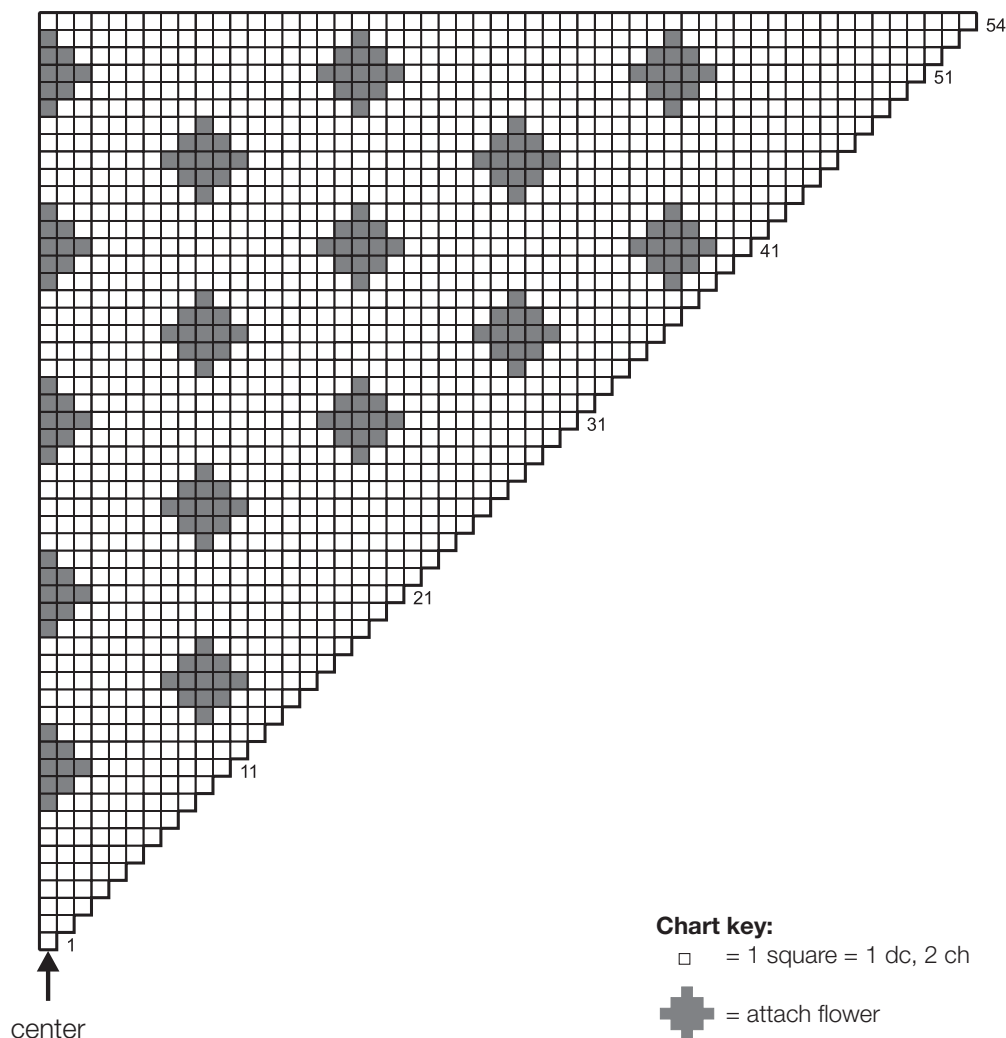


Chart key:

- = 1 chain (ch)
- † = 1 double crochet (dc)
- ‡ = 1 treble crochet (trc)
- = begin flower
- Σ = end flower

SHAWL

Schematic



GAUGE SWATCH

Before you begin knitting...

...make a gauge swatch. Use the recommended needles, yarns and pattern stitch for your gauge swatch. It should measure approx. 12 cm x 12 cm. Cast on and bind off rows, as well as selvage stitches should not be included in the measurement. Pin your swatch and block it as you would the finished pieces of the garment. Count stitches and rows over 10 cm. If your gauge swatch is too small, switch to larger needles. If your gauge swatch is too big, switch to smaller needles.

ABBREVIATIONS

beg = begin(ning) • **cm** = centimeter(s) • **cont** = continue • **k** = knit • **k1f&b** = knit into front and back of same stitch • **m** = meter • **M1L** = lift strand between sts from front to back and k this strand through the back loop • **M1R** = lift strand between sts from the back and k this strand through the front loop • **mm** = millimeter • **p** = purl • **rem** = remaining; remain(s) • **rep** = repeat • **rnd(s)** = round(s) • **RS** = right side • **SKP** = slip 1 stitch, knit 1 stitch, pass slipped stitch over • **SK2P** = slip 1 stitch, knit 2 together, pass slipped stitch over • **S2KP** = slip 2 stitches, k1 stitch, pass slipped stitches over • **sl** = slip • **st (s)** = stitch(es) • **tbl** = through the back loop • **tog** = together • **WS** = wrong side • **yo** = yarnover