

Cover design/B/C – Wrap in chevron lace



You will need **100 g** of Lana Grossa **Gomitolo Silkhair** (65% superkid mohair, 30% silk, 5% Merino wool; 800 m/100 g) in Olive/Loden Melange (**col 206**) or **100 g** in Blue/Grey Melange (**col 203**) or **100 g** Brown/Mocha Melange (**col 210**). Size 5 mm needles.

Size Approx. 50 cm wide x 160 cm long.

Gauge: 17 sts and 22 rows = 10 x 10 cm in chevron lace on size 5 mm needles.

Chevron lace: Multiple of 17 + 2 + 2 selva-ge sts. Work according to chart. Numbers at right edge of chart indicate RS rows; on WS rows, work sts as they appear, p all yos. Rep rows 1 – 14.

Instructions: With size 5 mm needles cast on 89 sts. Next WS row: K1, p1, [k1, p15, k1] 5 times, p1, k1. Next RS row: Work row 1 of chart for chevron lace. Beg with 2 sts before patt rep, work 17-st patt rep between arrows 5 times, end with 2 sts after patt rep. Cont to follow chart until piece meas approx. 160 cm from cast-on, ending with a chart row 14. Loosely bind off all sts in patt.

Finishing: Carefully weave in all ends. Pin piece to measurements and block.

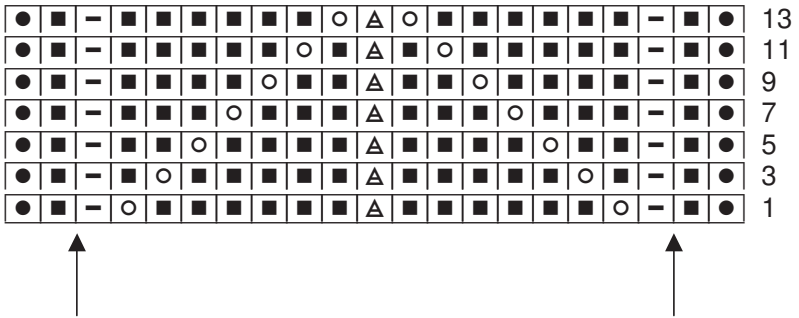


Chart key:

- = k on RS, p on WS
- = p on RS, k on WS
- = yo
- △ = sl 1 kwise, k2tog, pass slipped st over knitted st
- = selvage st: k on RS and WS