

Cover design / 1 B – Wrap/Poncho



You will need **200 g** of Lana Grossa **Shades of Alpaca Silk** (45% Merino wool, 35% baby alpaca, 20% silk; 680 m/200 g) in Beige/Light Grey/Ice Blue/Mocca (**col 304**) or **200 g** in Beige/Brown/Mocha/Petrol (**col 306**).
Long size 5 and 6 mm circular needles.

Size Approx. 124 x 67 cm.

Garter selvage: K first and last st of every row. Work a garter selvage throughout.

Seed stitch: Row 1: K1, p1. On all foll rows, purl the knit sts and knit the purl sts.

Zigzag lace: Multiple of 6. Work according to chart. Numbers at right edge of chart indicate RS rows; on WS rows, p all sts and yos. Work the 6-st patt rep throughout. Rep rows 1 – 20.

Gauge: 16 sts and 25 rows = 10 x 10 cm in zigzag lace on size 6 mm needles.

Instructions: With size 5 mm circular needle cast on 200 sts for lower edge of back. Beg and end with a WS row work in seed st for 5 rows = approx. 1.5 cm. Change to size 6 mm circular needle. Next RS row: Garter selvage, work in seed st as established over next 3 sts, work zigzag lace over next 192 sts, work in seed st as established over next 3 sts, garter selvage. Cont in patt as established for another 79 rows and piece meas approx. 33.5 cm from cast-on. Next RS row: Work in patt, bind off center 44 sts for neck. Next WS row: Work in patt, cast on 44 sts over bound-off sts. Cont in patt as established for another 78 rows. Change to size 5 mm circular needle. Work in seed st across all sts for 5 rows = approx. 1.5 cm. Bind off all sts in patt.

Finishing: Pin piece to measurements and block.

Info: The piece may be worn horizontally as a wrap as shown on cover or vertically as a poncho with a V-neck at front as shown in photo 1B.

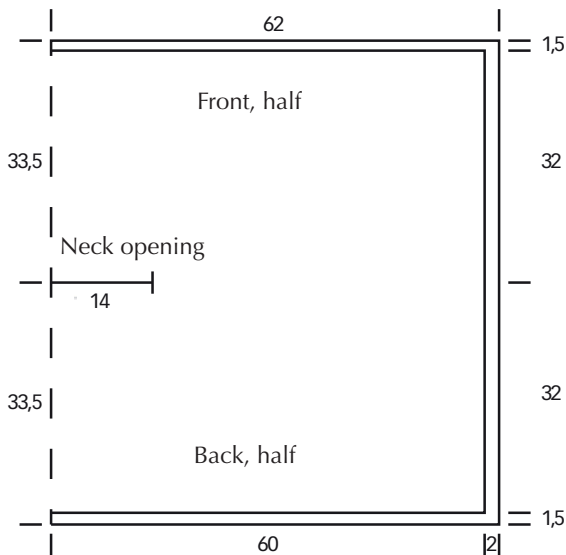
Chart

			○	/				○	19
		○	/				○	/	17
	○		/			○		/	15
	○		/	○				/	13
○			/	○				/	11
\	○			\	○				9
\	○			\	○				7
\		○		\		○			5
\			○	\			○		3
\				\				○	1

└─── patt rep ───┘

Chart key:

- = k1
- = yo
- ⊠ = k2tog
- ⊞ = sl 1 kwise, k1, pass slipped st over knitted st

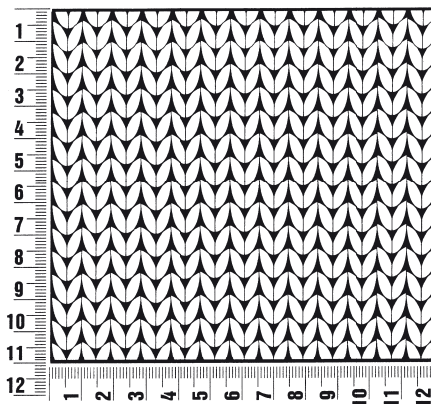


Schematic for cover design/1B

Gauge Swatch

Before you begin knitting...

...make a gauge swatch. Use the recommended needles, yarns and pattern stitch for your gauge swatch. It should measure approx. 12 cm x 12 cm. Cast on and bind off rows, as well as selvage stitches should not be included in the measurement. Pin your swatch and block it as you would the finished pieces of the garment. Count stitches and rows over 10 cm. If your gauge swatch is too small, switch to larger needles. If your gauge swatch is too big, switch to smaller needles.



Abbreviations

beg = begin(ning) · **cont** = continue · **inc** = increase(s) · **k** = knit · **kwise** = as if to knit · **meas** = measures · **M1R** = lift strand between sts from the back and knit this strand through the front loop · **patt** = pattern · **p** = purl · **rep** = repeat(s) · **RS** = right side · **sl** = slip · **st(s)** = stitch(es) · **St st** = stockinette stitch · **tog** = together · **WS** = wrong side · **yo(s)** = yarn over(s)