

Design 4A – Triangular shawl in pattern mix



You will need **200 g** of Lana Grossa **Shades of Alpaca Silk** (45% Merino wool, 35% baby alpaca, 20% silk; 680 m/200 g) in Ice Blue/Mint/Grey-Blue/Blue (**col 303**). Long size 5, 6.5 and 9 mm circular needles.

Size Approx. 128 cm long, 110 cm wide (measured along short edge)

Garter selvage: K first and last st of every row. Work a garter selvage throughout.

Garter st: On size 5 mm needles: K every row.

St st: On size 5 mm needles: K on RS, p on WS.

Garter ridges: On size 5 mm needles: Rows 1 – 3: Work in St st. Row 4: Knit. Rep rows 1 – 4.

Star stitch: Multiple of 4 + 1. Work according to chart. Numbers at right edge of chart indicate RS rows, numbers at left edge of chart indicate WS rows. Beg with sts before patt rep, work 4 sts between arrows for patt rep, end with sts after patt rep. Work rows 1 – 5 once, then rep rows 2 – 5. Note: Work RS rows on size 5 mm needles, work WS rows on size 6.5 mm needles.

Gauges: 15.5 sts and 31 rows = 10 x 10 cm in garter st; 15.5 sts and 29 rows = 10 x 10 cm in garter ridges; 15.5 sts and 20 rows = 10 x 10 cm in star st.

Instructions: With size 5 mm circular needle cast on 3 sts. Beg with a WS row, work in garter st for 87 rows. Work garter ridges for 26 rows. Work star st according to chart for 34 rows. Work garter ridges

for 40 rows. Work star st for 24 rows. Work garter ridges for 28 rows. Work star st for 20 rows. Work garter ridges for 20 rows. Work star st for 18 rows. Work garter ridges for 22 rows. Work in garter st for 18 rows = 337 rows. At same time, inc 1 st at end of every RS row as foll: M1R, 1 st in from edge. Work increased sts into patt. When working star st, if there are not enough sts to k3tog, work sts in St st instead. With size 9 mm circular needle, bind off all sts w/wise.

Chart

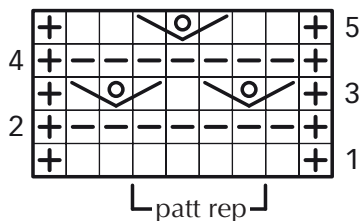


Chart key:

- ⊕ = garter selvage
- = k1
- ▢ = p1
- ⊗ = k3tog, leaving sts on left needle, yo, k3tog same 3 sts again