

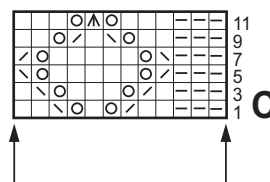
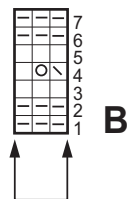
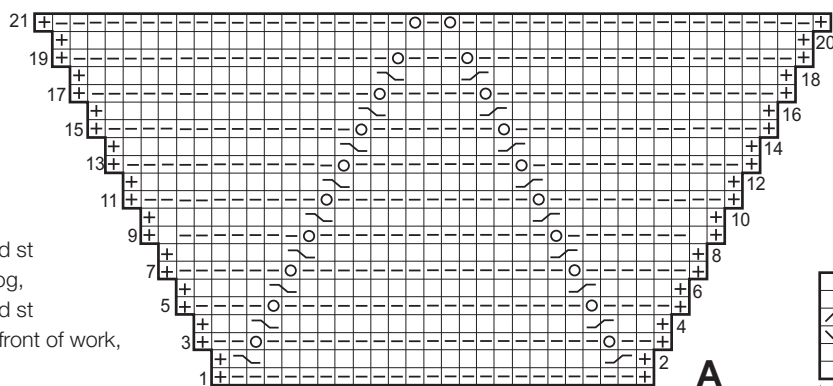
chart row 21. Cont in stockinette across all sts and cast on 3 sts at beg of next 2 rows (2 sts at beg of next 2 rows, 3 sts at beg of next 2 rows / 1 st at beg of next 2 rows, 2 sts at beg of next 6 rows) = 51 (57, 63) sts. Work even until piece meas 8.5 (9.5, 10.5) cm from beg, ending with a WS row. Cut yarn. Put aside. With size 3.5 mm circular needle work **front of pants** same as back, ending with a WS row. Do not cut yarn. Next RS row: K51 (57, 63), then k51 (57, 63) across back of pants = 102 (114, 126) sts. Join for working in rnds. Work rnd 1 of chart B, decreasing 6 sts evenly around = 96 (108, 120) sts. Work rnds 2 – 7 of chart B. Work rnd

1 of chart C. Cont to follow chart C until piece meas 18 (20, 22) cm from beg. Next 2 rnds: Purl. Next 6 rnds: Knit. Next rnd: Purl for turning ridge. Next 6 rnds: Knit. Bind off all sts.

Finishing: Pin piece to measurements and block. Sew gusset seam. Crochet trim: Rnd 1: Work sc. Rnd 2: * 1 sc, 1 picot of [ch3, 1 sl st in first ch], skip 1 sc; rep from * around. Fold top of pants to WS at turning ridge and sew down, leaving opening free. Thread elastic through opening. Close opening. Bows [make 2]: With size 3.5 mm needles loosely cast on 80 sts. Next row: Bind off all sts loosely in knit. Attach bows. Knot ends.

Chart key:

- ☐ = selvage st
- = k1
- ▢ = p1
- ⊗ = yo
- ⊠ = k2tog
- ⊞ = slip 1 st as if to knit, k1, pass slipped st over knitted st
- ⊡ = slip 1 st as if to knit, k2tog, pass slipped st over knitted st
- ⊞ = sl 1 st to cn and hold in front of work, k1, then k1 from cn
- ⊡ = sl 1 st to cn and hold in back of work, k1, then k1 from cn



DESIGN 29



BABY SOFT & COOL WOOL BABY DRESS

Size 74/80 (86/92, 98/104)
Instructions are given for first size. Figures in parenthesis refer to larger sizes. When only one figure is given, it applies to all sizes.

Materials: 100 (150, 150) g of Lana Grossa **Baby Soft** (60% polyamide, 40% cotton; 150 m/50 g) in Pale Grey (**col 12**) and 50 g of Lana Grossa **Cool Wool Baby** (100% pure wool; 220 m/50 g) in Pink (**col 216**).

Size 4 mm needles; size 4 mm circular needle, 40 cm long; size 3.5 mm crochet hook; one 15 mm button.

Note: Total yarn amounts for dress and matching pants are 100 (150, 150) g in Pale Grey and 50 (50, 100) g in Pink.

Garage st: K every row.

Garage st in rnds: P 1 rnd, k 1 rnd.

Reverse stockinette: P on RS, k on WS.

Reverse stockinette in rnds: P every rnd.

Crocheted collar: Multiple of 4 + 2. Work according to chart. Beg with sts before patt rep, work 4 sts between arrows for patt rep, end with sts after patt rep. Work rows 1 – 5 once.

Gauge: 18 sts and 31 rnds/rows = 10 x 10 cm in reverse stockinette on size 4 mm needles.

Front and back: Worked in one piece in the rnd to underarm. With size 4 mm circular needle and Pale Grey cast on 116 (122, 130) sts. Place beg of rnd marker and join for working in rnds. Place 2nd marker 58 (61, 65) sts from beg of rnd marker = 58 (61, 65) sts each for back and front. Work garage st in rnds for 2 cm. Work reverse stockinette in rnds for 11 rnds. Next dec rnd: P2tog before and after each marker. Rep dec rnd every 12th rnd 1 (3, 4) time(s), then every 10th rnd 4 (2, 1) time(s) = 46 (49, 53) sts each for back and front and 92 (98, 106) sts total. Work even until piece meas 26 (27, 28) cm from cast-on. Divide for front and back: Place 46 (49, 53) sts on holder for back. Beg working back and forth in rows.

Front: Work 1 WS row even. Shape armholes: Bind off 2 sts at beg of next 2 rows, 1 st at beg of next 6 rows = 36 (39, 43) sts. Work even until armhole meas 8.5 (9.5, 10.5) cm, ending with a WS row. Shape neck: Next RS row: Bind off center 16 (17, 19) sts. Working each side separately, bind off 2 sts at each neck edge once. Bind off rem 8 (9, 10) sts for each shoulder. **Back:** Return 46 (49, 53) held back sts to needle and with WS facing rejoin yarn. Shape armholes same as for front = 36 (39, 43) sts. Work even until armhole meas 2.5 (3.5, 4.5) cm, ending with a WS row. Divide for back slit: Bind off center 0 (1, 1) st. Working each side separately and working 2 sts at each slit edge in garage st work even until slit meas 7 cm. Bind off 10 (10, 11) sts at each slit edge. Bind off rem 8 (9, 10) sts for each shoulder.

Sleeves: With size 4 mm needles and Pale Grey cast on 34 (38, 42) sts. Work in garage st for 1.5 cm. Work in reverse stockinette for 1.5 cm, ending with a WS row. Shape sleeve cap: Bind off 2 sts at beg of next 2 rows, 1 st at beg of next 6 rows, [work 2 rows even, bind off 1 st at beg of next 2 rows] 3 times, then bind off 1 st at beg of next 4 rows, 2 sts at beg of next 2 rows. Bind off rem 10 (14, 18) sts.

Crocheted collar: Make 2 alike. With size 3.5 mm crochet hook and Pink ch 47 (51, 55) + ch 3 (count as 1 dc). Work rows 1 – 5 of chart. Cut yarn and fasten off.

Finishing: Sew shoulder seams. With crochet hook and Pale Grey work 1 rnd sc around neck and slit edge and at same time make a ch-5 button loop at top right edge of slit. Sew crocheted collar to single crochet rnd, easing to fit. Sew in sleeves. Sew sleeve seams, sewing bottom 1.5 cm from the WS for the turnback of the cuffs to the RS. Tack down cuffs with a few sts. Sew on button.

