

Materials: 300 (350, 400) g of Lana Grossa **Ecopuno** (72% cotton, 17% Merino wool, 11% baby alpaca; 215 m / 50 g) in Greige (col 18). Size 3 and 4 mm needles; size 3 mm circular needles, 50 and 80 cm long.

Slip garter selvage: On every row: Sl first st kwise, k last st.
Rib patt: K1, p1.

Knit/purl patt: Work according to chart on page 72. Numbers at right edge of chart indicate RS rows; on WS rows, work sts as they appear. Beg with sts before patt rep, end with sts after patt rep. Rep rows 1–8.

Gauge: 22 sts and 33 rows = 10 x 10 cm in knit/purl patt on size 4 mm needles.

Back: Worked side to side. With size 3 mm needles cast on 48 sts for **right sleeve**. Beg and end with a WS row work in rib patt for 3 cm. Change to size 4 mm needles. Next RS row: Work row 1 of knit/

purl patt chart and at same time, inc 1 st at beg of row for overarm/shoulder shaping, inc 1 st at end of row for sleeve shaping. **Note:** Shoulder/overarm shaping and sleeve shaping are worked simultaneously; read the following section all the way through before proceeding. Cont to foll chart, inc 1 at beg of next 44 RS rows and at same time, inc 1 st at end of next 28 RS rows. Cast on 5 sts at beg of next WS row for right side edge = 127 sts. Work increased sts into patt. Work even until piece meas 31 (33.5, 36) cm from cast-on. Place marker at right edge to indicate beg of neck. Work even until piece meas 21 cm from neck marker, ending with a WS row. Place 2nd marker at right edge to indicate end of neck. Work even for 8 (16) rows. Bind off 1 st at beg of next RS row for overarm/shoulder shaping, then every foll RS row 44 times. At same time, when piece meas 42 (47, 52) cm from right side edge, bind off 5 sts at beg of next WS row, then bind off 1 st at beg of next 29 WS rows = 48 sts. Change to size 3 mm needles. Work in rib patt for 3 cm. Bind off all sts in rib.

Front: Worked side to side. With size 3 mm needles cast on 48 sts for **left sleeve**. Work same as for back to beg of neck, ending with a WS row. Shape neck: Bind off 4 sts at beg of next RS row, 2 sts at beg of next 2 RS rows, 1 st at beg of next 3 RS rows. Work even until neck meas 10.5 cm from beg of shaping, ending with a WS row. Cast on 1 st at beg of next 3 RS rows, 2 sts at beg of next 2 RS rows, 4 sts at beg of next RS row. Complete front same as for back.

Finishing: Pin pieces to measurements and block. Sew shoulder/overarm seams. Sew side and sleeve seams. With shorter size 3 mm circular needle pick up and k 152 sts evenly around neck edge. Join for working in rnds. Work rib patt in rnds for 1.5 cm. Bind off all sts in rib. With longer size 3 mm circular needle pick up and k 208 (232, 256) sts evenly around bottom edge. Join for working in rnds. Work rib patt in rnds for 3 cm. Bind off all sts in rib.

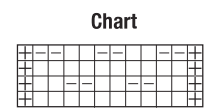
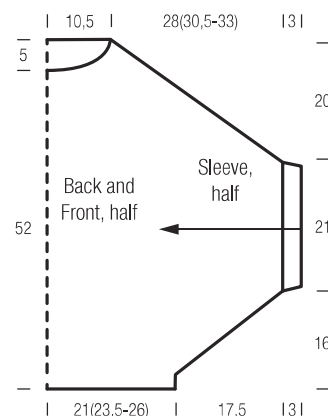


Chart key:
 ⊞ = sl garter selvage
 □ = k1
 ⊞ = p1



DESIGN 10

VEST • Alcanto • Alcanto Print
Size 36 – 40 (42 – 46)

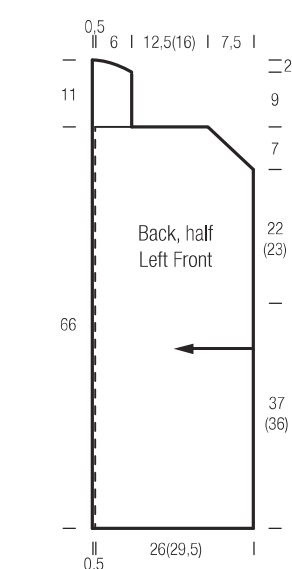
Instructions are given for first size. Figure in parenthesis refers to larger size. When only one figure is given, it applies to both sizes.

Materials: 150 (200) g each of Lana Grossa **Alcanto** (70% polyester, 30% polyamide; 125 m / 50 g) in Olive Yellow (col 13) and Olive Green (col 17) and 150 (200) g of Lana Grossa **Alcanto Print** (70% polyester, 30% polyamide; 125 m / 50 g) in Natural/Beige/Grey-Green (col 101). Size 7 mm crochet hook; size 7 mm circular needle, 100 cm long.

Half double crochet (hdc): Wrap yarn over hook, insert hook into work (or 2nd ch from hook). Wrap yarn over hook, draw through work only, wrap yarn again. Draw through all 3 loops on hook. Beg each row with ch 1 (do not count as hdc).

Increasing 1 st: 2 hdc in hdc on row below.

Decreasing 1 st: Work hdc to 2nd to last step = 3 loops on hook. Wrap yarn over



hook, insert hook into work. Wrap yarn over hook, draw through work only, wrap again. Draw through all 5 loops on hook.

Stripe sequence: Work * 1 row with Natural/Beige/Grey-Green, 1 row with Olive Yellow, 1 row with Olive Green; rep from * throughout.

Gauge: 9 hdc and 9 rows = 10 x 10 cm on size 7 mm hook.

Back: Begins at right side edge. Arrow on schematic shows direction of work. With size 7 mm hook and Natural/Beige/Grey-Green, ch 55. Work hdc back and forth in rows, foll stripe sequence and shape shoulder as foll: Inc 1 st at right edge every other row once, then every foll row 5 times = 60 hdc. To increase, work 2 hdc into 2nd st in from edge. Work even until 24 (27) rows have been worked from beg, ending with Olive Green. Piece meas approx. 26.5 (30) cm and center of back has been reached. Beg with Olive Yellow work stripe sequence in reverse and work even for 16 (19) rows. Shape shoulder:

Dec 1 st at right edge once, then every foll row 5 times = 54 hdc. To decrease, hdc2tog 1 st in from edge. Fasten off. Back ends at left side edge in Natural/Beige/Grey-Green

Left front: Begins at side edge. With Natural/Beige/Grey-Green, ch 55. Work same as for back incl incs for shoulder shaping at right edge until piece meas approx. 20 (23.5) cm and 18 (21) rows have been worked = 60 hdc. Ch 8 at right edge for shawl collar. Cont in patt across all 68 sts. Inc 1 st at right edge same as for shoulder every other row once, then every 4th row once = 70 hdc. Fasten off. Left front ends at front edge in Olive Green.

Right front: Work same as for left front, reversing all shaping.

Finishing: Pin pieces to measurements and block. Sew shoulder seams 20 (23.5) cm in from each shoulder edge. Sew side seams, leaving top 22 (23) cm open for armholes. With mattress st and from WS sew short collar edges tog. Sew collar to back neck, easing to fit. Armhole edgings: With size 7 mm hook and Natural/Beige/Grey-Green work 1 rnd sl st around armhole edges. With size 7 mm hook and Olive Green work 1 row sl st along front edge incl collar. With size 7 mm circular needle and Olive Yellow pick up and k 105 (117) sts along bottom edge of back and fronts. P 1 WS row. Loosely bind off all sts kwise.



DESIGN 11

JACKET • Seta
Size 36/38 (40/42, 44/46)

Instructions are given for first size. Figures in parenthesis refer to larger sizes. When only one figure is given, it applies to all sizes.

Materials: 350 (400, 450) g of Lana Grossa **Seta** (60% silk, 40% cotton; 115 m / 50 g) in Sandy Beige (col 12). Size 4.5, 5 and 6 mm needles; size 4.5 mm crochet hook; five 15 mm mother-of-pearl buttons in beige/brown [by Union Knopf, item 46286, col 14].

