

rnds in Fair Isle technique according to chart. 1 square = 1 st and 1 rnd. Numbers at right edge of chart indicate rnds. Work all rnds from right to left. Follow chart key for colors used. Very loosely carry strand not in use across WS of work. Work 8-st patt rep between arrows around. Work rnds 1 – 14 once.

Gauges before felting: On size 8 mm needles, 11.5 sts and 13 rnds = 10 x 10 cm in Fair Isle patt; 11.5 sts and 16.5 rnds = 10 x 10 cm in St st. **Instructions:** With dpns and Beige Mélange cast on 8 sts for **bottom of bowl**. Arrange sts evenly on 4 needles = 2 sts per needle. Place beg of rnd marker and join for working in rnds.

Note: On all rnds not listed work even in St st. Change to appropriate circular needle as st count increases and decreases. **Rnd 1:** K1f&b around

= 16 sts. **Rnd 2:** * K1, k1f&b; rep from * around = 24 sts. **Rnd 3:** * K2, k1f&b; rep from * around = 32 sts. **Rnd 5:** * K3, k1f&b; rep from * around = 40 sts. **Rnd 7:** * K4, k1f&b; rep from * around = 48 sts. **Rnd 8:** * K5, k1f&b; rep from * around = 56 sts. **Rnd 10:** * K6, k1f&b; rep from * around = 64 sts. **Rnd 11:** * K7, k1f&b; rep from * around = 72 sts. **Rnds 12 – 25:** Work rnds 1 – 14 of Fair Isle patt according to chart. **Rnd 26:** With Beige Mélange, * k7, k2tog; rep from * around = 64 sts. **Rnd 27:** * K6, k2tog; rep from * around = 56 sts. **Rnd 28:** Work even in St st. **Rnd 29:** With Brown, work even in St st. **Rnd 30:** * K6, k1f&b; rep from * around = 64 sts. **Rnd 34:** * K7, k1f&b; rep from * around = 72 sts. **Rnd 38:** * K7, k2tog; rep from * around = 64 sts. **Rnd 42:** * K6, k2tog; rep from * around = 56 sts. **Rnd**

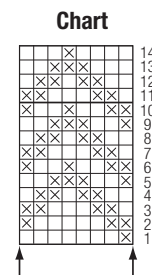
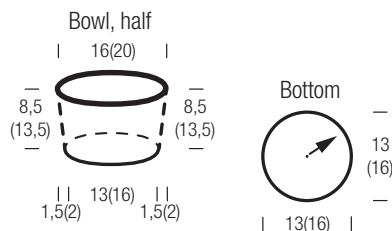


Chart key:

- ☒ = 1 M glatt re in Braun
- ☐ = 1 M glatt re in Beige meliert

the lowest water setting, the highest temperature and the longest agitation possible. Turn on the machine and let it fill with water. Add small amount of detergent if desired. Pull felted bowl in shape, stuff bowl with crumpled paper and let dry.



Design 38

PILLOW COVERS

Approx. 38 cm long x 39 cm wide

Materials: For each cover: **100 g** of Lana Grossa **Alcanto** (70% polyester, 30% polyamide; 125 m/ 50 g) in Olive Yellow (**col 13**) and **100 g** of Lana Grossa **Alcanto Print** (70% polyester, 30% polyamide; 125 m/ 50 g) in Natural/Beige/Grey-Green (**col 101**). Size 5.5 mm needles; size 5 mm crochet hook; four 36 mm

long horn buttons in black/brown [by Union Knopf, item 35579, col 22]; one 45 x 45 cm pillow form.

Slip garter selvage: On every row: Sl first st kwise, k last st.

Slip stitch selvage: On every row: K first st, sl last st pwise wyif.

Garter st: K every row.

St st: K on RS, p on WS.

Gauges: On size 5.5 mm needles, 17 sts and 29 rows = 10 x 10 cm in garter st; 16 sts and 22 rows = 10 x 10 cm in St st.

Back: With size 5.5 mm needles and Olive Yellow cast on 68 sts. Working a slip garter selvage at each edge work in garter st for 38 cm. Bind off all sts.

Front: Worked in 2 halves. **First half:** With size 5.5 mm needles and Natural/Beige/Grey-Green cast on 35 sts. Beg with a WS row and working a slip st selvage at each edge work in St st for 38 cm. Bind off all sts. **2nd half:** Work as for first half until piece meas 4 cm from cast-on. Next RS [button-

hole] row: Slip st selvage, k1, bind off 2 sts for first buttonhole. Work rem 3 buttonholes spaced 10 cm apart. On foll WS row cast on 2 sts over bound-off sts. Cont until piece meas 38 cm from cast-on. Bind off all sts.

Finishing: Pin pieces to measurements and block. Lap 2 cm of 2nd half of front over first half at center. Baste halves tog at top and bottom edge. With wrong sides tog baste

back and front tog with large running sts. With size 5 mm hook and Olive Yellow work 1 rnd sc, then 1 rnd rev sc [work sc from left to right] around entire edge of cover. Work through both thicknesses, work 3 sc in each corner on first rnd. Remove basting thread. Sew on buttons. Insert pillow form.



Design 39

Elongated slip st patt: Work according to chart. Numbers at right edge of chart indicate RS rows, numbers at left edge of chart indicate WS

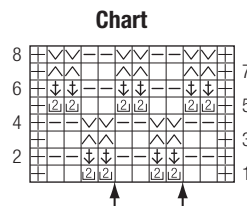


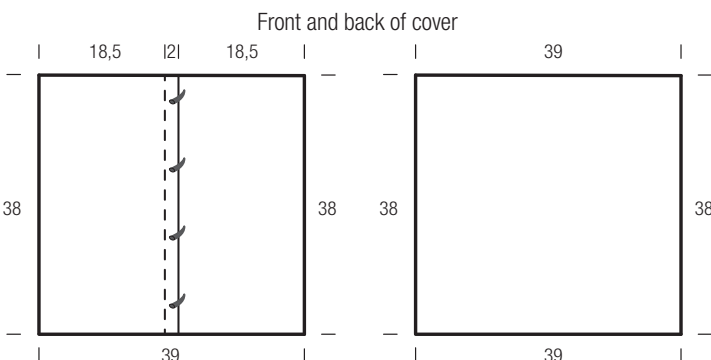
Chart key:

- ☒ = selvage st
- ☐ = k1
- ☐ = p1
- ☒ = sl 1 pwise wyif

☒ = sl 1 pwise wyif

☒ = sl 1 pwise, dropping yos and pulling st up to elongate

☒ = yo twice, k1



PILLOW COVER

Approx. 42 cm long x 44 cm wide

Materials: **250 g** of Lana Grossa **Cashseta** (40% Modal, 30% polyamide, 15% cashmere, 15% silk; 100 m/50 g) in Cinnamon (**col 18**). Size 6.5 mm needles; one 45 x 45 cm pillow form.