

**Garter st:** K every row.

**Chevron patt:** Work according to chart. Numbers at right edge of chart indicate RS rows, numbers at left edge of chart indicate WS rows. Letters at right and left edge of chart indicate yarn used: SLM = Solo Lino Mélange, S = Secondo. Beg with st(s) before patt rep, work 16 sts between arrows for patt rep, end with st(s) after patt rep. Rep rows 1 – 8. **Note:** The wavy bottom edge is formed by the pattern.

**Gauges:** On size 4 mm needles, 26 sts and 23 rows = 10 x 10 cm in chevron patt, measured hanging from needle; 19 sts and 39 rows = 10 x 10 cm in garter st with Solo Lino Mélange.

**Back:** With size 4 mm needles and Solo Lino Mélange cast on 115 (131) sts. Work chevron patt according to chart. Work rows 1 – 8 a total of 15 times = 120 rows and piece meas approx. 52 cm from cast-on. Next RS row: With Solo Lino Mélange work in garter st, dec 25 (29) sts evenly across row = 90 (102) sts. Cont until 15 (16) cm have been worked in garter st. Shape neck: Next RS

row: Bind off center 30 sts. Working each side separately, bind off 4 sts at each neck edge once, 3 sts once, 2 sts once, 1 st once. Work even for 2 rows. Bind off rem 20 (26) sts for each shoulder.

**Front:** Work same as for back until 12 (13) cm have been worked in garter st. Shape neck: Next RS row: Bind off center 20 sts. Working each side separately, bind off 4 sts at each neck edge once, 3 sts once, 2 sts once, 1 st 6 times and when same length as back to shoulders, bind off rem 20 (26) sts for each shoulder.

**Sleeves:** With size 4 mm needles and Solo Lino Mélange cast on 56 (60) sts. Work in garter st and shape sleeve as foll: Inc 1 st at each end of 5th row from cast-on, then every 4th row 7 times = 72 (76) sts. Work even until piece meas 9 cm from cast-on. Loosely bind off all sts.

**Finishing:** Pin pieces to measurements and block. Sew shoulder seams. With size 3.5 mm crochet hook and Solo Lino Mélange work 1 rnd sl st around neck edge. Sew sleeves to garter st section. Sew side and sleeve seams.



Design 63

## SHAWL

Approx. 180 cm long x 58 cm wide

**Materials:** 100 g of Lana Grossa **Silkhair Design** (70% superkid mohair, 30% silk; 400 m/50 g) in Petrol/Turquoise/Khaki/Natural/Camel (**col 1006**). Size 4.5 mm needles.

**Lace patt:** Work according to chart. Numbers at right edge of chart indicate RS rows; on WS rows, work sts as they appear, p all yos. Beg with selvage st before patt rep, work 13

sts between arrows for patt rep, end with sts after patt rep. Rep rows 1 – 12.

**Gauge:** 18 sts and 20.5 rows = 10 x 10 cm in lace patt on size 4.5 mm needles, measured after blocking.

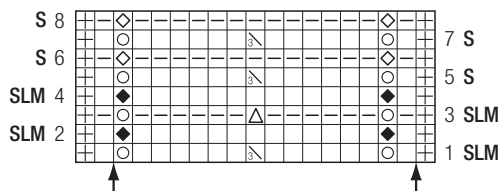
**Instructions:** Cast on 106 sts. Work lace patt according to chart. Work rows [1 – 12] 31 times, then work rows 1 and 2 once = 374 rows total and piece meas approx. 180 cm. Loosely bind off all sts.

**Finishing:** Pin piece to measurements and block. Carefully weave in all ends.

## Chart key:

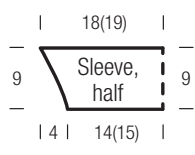
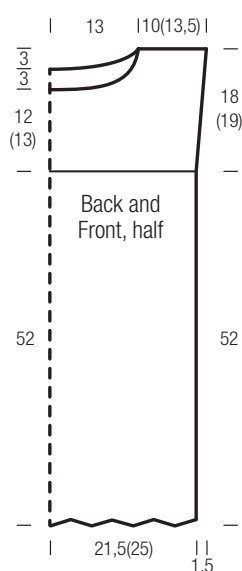
- ⊞ = selvage st
- = k1
- ▢ = p1
- ⊙ = yo
- ⊞ = k2tog
- ⊞ = skp: sl 1 kwise, k1, pass slipped st over knitted st

Chart

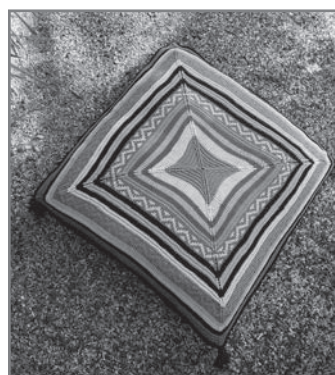
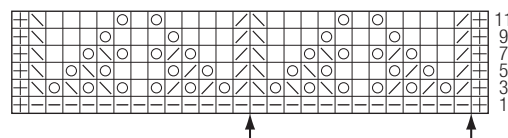


## Chart key:

- ⊞ = selvage st
- = k1
- ▢ = p1
- ⊙ = yo
- ◆ = k1tbl
- ⊞ = p1tbl
- △ = p3tog
- ⊞ = sk2p: sl 1 kwise, k2tog, pass slipped st over knitted st



Chart



Design 64

## PILLOW COVER

Approx. 65 cm long x 65 cm wide

**Materials:** 350 g of Lana Grossa **Organico** (100% organic cotton; 90 m/50 g) in Black (**col 14**), 100 g in Dark Petrol (**col 79**) and 50

g each in Violet (**col 97**), Lilac (**col 96**), Orange (**col 99**), Midnight Blue (**col 13**), Yellow/Green (**col 91**) and Raspberry (**col 69**) and 50 g of Lana Grossa **Alcanto** (70% polyester, 30% polyamide; 125 m/ 50 g) in Black (**col 11**). One set size 4.5 mm double-pointed needles [dpns]; size 4.5 mm circular needles, 40, 60, 80 and 120 cm long; size 4 mm crochet hook; one 65 x 65 cm pillow form.

**St st in rnds:** K every rnd.

**Garter stitch in rnds:** K 1 rnd, p 1 rnd.

**Pattern:** Work according to chart on page 108. Chart shows ¼ of cover. Work chart 4 times around. Numbers at right edge of chart indicate rnds. Work all rnds from right to left. Numbers on chart indicate colors used.



- ## Tassel



When working Fair Isle patt on rnds 17 – 22 and 39 – 44, very loosely carry strand not in use across WS of work. Work rnds 1 – 76 once.

**Gauge:** 17 sts and 23 rows = 10 x 10 cm in St st with size 4.5 mm needles and Organico.

**Front:** Worked in rnds from the outside in. With longest size 4.5 mm circular needle and Organico in Dark Petrol cast on 444 sts. Place beg of rnd marker and join for working in rnds. Place 3 more markers 111 sts apart to mark each quarter. Work rnds 1 – 76 of chart, working decs as shown. Change to shorter circular needle and dpns as st count decreases. After rnd 76, 12 sts remain. Cut yarn, draw yarn end through rem sts and pull tight. Weave in ends.

**Back:** With Organico in Black complete as for front. Work entirely in St st and work decs as shown on chart.

**Finishing:** Pin pieces to measurements and block. With wrong sides facing, join front and back: With size 4 mm crochet hook, Organico in Black and from right side, join pieces along 3 edges with sc, sc along rem edge of front only, that is: do not join pieces. Work 1 rnd rev sc [work sc from left to right]. Insert pillow form. Whip stitch rem seam.

With Alcanto make 4 tassels, each approx. 9 cm long and 40 strands thick. Wrap yarn around 4 fingers of your left hand. Carefully take the strands off your hand and lay them down flat. Thread a strand of yarn and tie off the strands at the top, leaving a long end. Cut the lower edge to free the wrapped strands. Wrap the long end of the yarn around the upper edge, insert the yarn under the shank and pull tight. Trim ends. Sew tassels to the four corners of the cover.



Design 65

## PULLOVER Size 36 – 40

**Materials:** 550 g of Lana Grossa **Allegro** (58% viscose, 42% cotton; 115 m/50 g) in Vanilla/Natural/Dark Grey/Rosewood/Beige (**col 29**). Size 4 and 4.5 mm needles; size 4.5 mm circular needle, 100 cm long; size 4 mm circular needle, 50 cm long; size 3.5 mm crochet hook.

**Rib patt:** K2, p2.

**Chart patt [on page 110]:** Numbers at right edge of chart indicate RS rows; on WS rows, p all sts. Chart shows front and right sleeve. Work left sleeve same as right sleeve, reversing all patt placement and omitting openwork patt at top of sleeve. Work those sts in St st. Beg with sts between arrow a and b. Work rows 1 – 156 once.

**Gauge:** 18 sts and 28 rows = 10 x 10 cm in St st on size 4.5 mm needles.

**Front and sleeves:** With size 4 mm needles cast on 84 sts. Next WS row: Selvage st, \* p2, k2; rep from \* to last 3 sts, p2, selvage st. Next RS

row: Work sts as they appear. Cont in rib patt as established for another 3 rows and piece meas approx. 2 cm from cast-on. Change to size 4.5 mm needles. Work row 1 of chart patt. Cont to foll chart through row 92 and piece meas approx. 35 cm from cast-on. Shape sleeves: Inc 1 st at each end of every RS row twice. Cast on 2 sts at beg of next 2 rows, 3 sts at beg of next 4 rows, 7 sts at beg of next 4 rows, 8 sts at beg of next 2 rows, 48 sts at beg of next 2 rows = 244 sts. Change to size 4.5 mm circular needle as st count increases. Cont to foll chart through row 136. Shape neck [row 137]: Bind off center 14 sts. Working each side separately, bind off 4 sts at each neck edge once, 3 sts once, 2 sts once, 1 st 5 times. Work to end of chart. Bind off rem 101 sts for each shoulder/overarm.

**Back and sleeves:** With size 4 mm needles cast on 84 sts. Next WS row: Selvage st, \* k2, p2; rep from \* to last 3 sts, k2, selvage st. Next RS row: Work sts as they appear. Cont in rib patt as established for another 3 rows and piece meas approx. 2 cm from cast-on. Change to size 4.5 mm needles. Cont as for front, reversing patt placement until 42 rows have been worked from last sleeve cast-on row. Shape neck: Bind off center 40 sts. Working each side separately, bind off 1 st at each neck edge once. Bind off rem 101 sts for each shoulder/overarm.

**Finishing:** Pin pieces to measurements and block. Sew shoulder/overarm seams. With size 3.5 mm hook work 1 rnd sc around neck edge. With size 4 mm circular needle pick up and k 100 sts along crochet rnd. Join for working in rnds. Work rib patt in rnds for 5 rnds. Bind off all sts in rib. With size 4 mm circular needle pick up and k 50 sts along sleeve

## TIP

Variegated yarns are yarns dyed with more than one color. Silkhair Print, Feltro Dégradé, 4 Capi

Color and Wakame Print are examples of variegated yarns. The frequency of the colors can be long and spaced out, producing a self-stripping pattern or colors can appear as shorter flecks. The effects vary depending on the technique of the crafter, the pattern used and the frequency of the color change. These effects include “flashing” (lightning-bolt effects) and “pooling” (large splotches of color).

While these effects can be integrated as a design element, they can sometimes be unwanted. To avoid color pooling, alternate 2 balls, using each ball for 2 rows, then switching. You may also want to start different balls at different color repeats.

