



[www.lanagrossa.com](http://www.lanagrossa.com)

## WRAP : SILKHAIR PRINT

Design 10 from Filati Tücher & Co. 02

Photo: © Petra Obermüller

# WRAP · SILKHAIR PRINT

## Design 10 from Filati Tücher & Co. 02



www.lanagrossa.com

Approx. 70 cm wide x 210 cm long

**Materials:** 50 g each of Lana Grossa **Silkhair Print** (70% superkid mohair, 30% silk; 400 m/50 g) in Blue-Violet/Petrol/Orange/Khaki (**col 354**), Yellow-Green/Petrol Green/Red-Brown/Taupe (**col 355**) and Jeans/Steel Blue/Umbrä/Greige (**col 356**). Size 6 mm needles.

**Eyelet patt:** Work according to chart. Multiple of 10 + 6 selvage sts. Numbers at right edge of chart indicate RS rows; on WS rows, p all sts and yos. Work the

10-st patt rep between arrows throughout. Rep rows 1 – 12.

**3-st selvage:** On RS rows, sl 1 pwise wyib, k1, sl 1 pwise wyib, work to last 3 sts, sl 1 pwise wyib, k1, sl 1 pwise wyib. On WS rows, k1, sl 1 pwise wyif, k1, work to last 3 sts, k1, sl 1 pwise wyif, k1.

**Gauge:** 14 sts and 22 rows = 10 x 10 cm in eyelet patt on size 6 mm needles.

**Instructions:** Using col 354 cast on 106 sts. Next RS row: 3-st selvage,

work row 1 of eyelet patt chart, working the 10-st patt rep between arrows 10 times, 3-st selvage. Maintaining 3-st selvage at each edge cont to foll chart until piece meas 70 cm from cast-on. Change to col 355 and cont in patt for another 70 cm. Change to col 356 and cont in patt for another 70 cm. Loosely bind off all sts.

**Finishing:** Pin piece to measurements and block. Carefully weave in all ends.

Chart

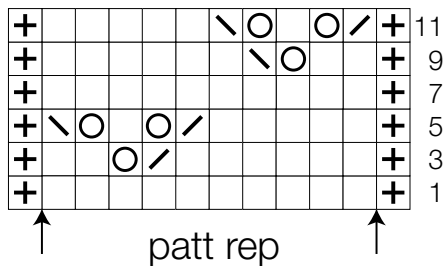


Chart key:

⊕ = 3-st selvage

□ = k1

○ = yo

↘ = k2tog

↘ = skp: sl 1 kwise, k1, pass slipped st over knitted st

## Gauge Swatch

### Before you begin ...

...make a gauge swatch. Use the recommended needles, yarns and pattern stitch for your gauge swatch. It should measure approx. 12 cm x 12 cm. Cast-on and bind-off rows, as well as selvage stitches should not be included in the measurement. Pin your swatch and block it as you would the finished pieces of the garment. Count stitches and rows over 10 cm. If your gauge swatch is too small, switch to larger needles. If your gauge swatch is too big, switch to smaller needles.



## Abbreviations

**beg** = begin(ning) • **ch** = chain • **cont** = continue • **dec** = decreas(e)(ing) • **inc** = increas(e)(ing) • **k** = knit • **kwise** = as if to knit • **meas** = measures • **M1L** = lift strand between sts from front to back and knit this strand through the back loop • **M1R** = lift strand between sts from the back and knit this strand through the front loop • **patt** = pattern • **pm** = place marker • **p** = purl • **pwise** = as if to purl • **rem** = remain(ing) • **rep** = repeat(s) • **rev St st** = reverse stockinette stitch • **rnd(s)** = round(s) • **RS** = right side • **sc** = single crochet • **skp** = slip 1 stitch as if to knit, knit 1 stitch, pass slipped stitch over knitted stitch • **sk2p** = slip 1 stitch as if to knit, knit 2 together, pass slipped stitch over knitted stitch • **s2kp** = slip 2 stitches as if to knit, k 1 stitch, pass slipped stitches over knitted stitch • **sl** = slip • **st(s)** = stitch(es) • **St st** = stockinette stitch • **tbl** = through the back loop • **tog** = together • **wyib** = with yarn in back of work • **wyif** = with yarn in front of work • **WS** = wrong side • **yo(s)** = yarn over(s)

### Publisher's Info

**Publisher:** Lana Grossa GmbH, Gaimersheim, www.lanagrossa.com

**Photographer:** Petra Obermüller