

**Instructions:** With 1 strand of each yarn held tog cast on 59 sts. Beg with a WS row work rib patt according to chart section A for 39 rows and piece meas approx. 17 cm from cast-on. Work cable patt according to chart section B for 316 rows and piece meas approx. 149 cm from cast-on. Work rib patt according to chart section C for 38 rows and piece meas approx. 166 cm from cast-on. Loosely bind off all sts in rib.

**Finishing:** Pin piece to measurements and block.



DESIGN 5

**PULLOVER • Silkhair Print**  
**Size 36 – 40 (42/44, 48/50)**

Instructions are given for first size. Figures in parenthesis refer to larger sizes. When only one figure is given, it applies to all sizes.

**Materials:** 300 (350, 400) g of Lana Grossa **Silkhair Print** (70% superkid mohair, 30% silk; 400 m/50 g) in Greige/Medium-/Dark Brown/Taupe (**col 359**). Size 3, 3.5, 4.5 and 5.5 mm needles; size 3.5 mm circular needle, 50 cm long.

**Note:** Work with 2 strands of yarn held tog throughout. Unwind yarn as necessary to matching color repeat.

**Rib patt:** K2, p2.

**Textured slip st patt:** Work according to chart. Numbers at right edge of chart indicate RS rows, numbers at left edge of chart indicate WS rows. Beg with st(s) before patt rep, work 10 sts between arrows for patt rep, end with st(s) after patt rep. Rep rows 1 – 12.

**St st:** K on RS, p on WS.

**Gauges:** 23.5 sts and 37 rows = 10 x 10

cm in textured sl st patt with size 5.5 mm needles and 2 strands of yarn held tog; 19.5 sts and 26 rows = 10 x 10 cm in St st with size 4.5 mm needles and 2 strands of yarn held tog.

**Back:** With size 3.5 mm needles and 2 strands of yarn held tog cast on 122 (130, 142) sts. Next RS row: Selvage st, k1, \* p2, k2; rep from \* to last 4 sts, p2, k1, selvage st. Next WS row: Work sts as they appear. Cont in rib patt as established until piece meas 4 cm from cast-on, increasing 10 (12, 10) sts evenly across last WS row = 132 (142, 152) sts. Change to size 5.5 mm needles. Work textured sl st patt according to chart for 104 rows = approx. 28 cm. Place marker at each edge to indicate beg of armholes. Cont in patt for 74 (78, 82) rows and piece meas approx. 48 (49, 50) cm from end of rib patt. Shape shoulders: At each shoulder edge bind off 6 (6, 7) sts once, then 6 sts twice, 5 sts 5 times (then 6 sts 7 times / then 7 sts 4 times, 6 sts 3 times). Bind off rem 46 sts.

**Front:** Work same as for back until 72 (76, 80) rows have been worked from armhole markers and piece meas approx. 47 (48, 49) cm from end of rib patt. Shape neck: Next RS row: Bind off center 18 sts. Working each side separately, bind off 5 sts at each neck edge once, 2 sts twice, 1 st 5 times and when same length as back to shoulders, shape shoulders same as for back. No sts rem.

**Sleeves:** With size 3 mm needles and 2 strands of yarn held tog cast on 48 (52, 56) sts. Next RS row: Selvage st, \* p2, k2; rep from \* to last 3 sts, p2, selvage st. Next WS row: Work sts as they appear. Cont in rib patt as established until piece meas 2 cm from cast-on, ending with a WS row. Change to size 4.5 mm needles. Work in St st and shape sleeve as foll: Inc 1 st at each end of 7th row, then every 6th row 15 times = 80 (84, 88) sts. Work even until piece meas 43 cm from cast-on. Loosely bind off all sts.

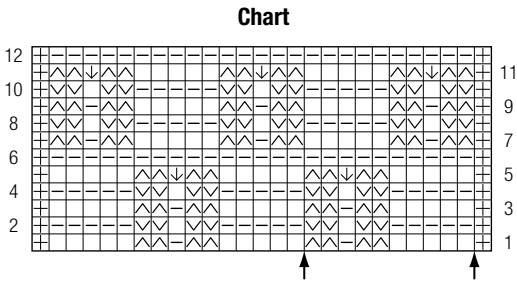


**Finishing:** Pin pieces to measurements and block. Sew shoulder seams. With size 3.5 mm circular needle and 2 strands of yarn held tog pick up and k 108 sts evenly around neck edge. Join for working in rnds. Work rib

**Chart key:**  
⊞ = selvage st  
□ = k1  
▢ = p1  
⊞ = sl 1 pwise wyib  
☑ = sl 1 pwise wyif

☑ = insert right needle through center of st 5 rows below and knit a new st; drop original sts from left needle

patt in rnds for 5 cm. Loosely bind off all sts in rib. Fold neckband in half to WS and sew down. Sew on sleeves between markers. Sew side and sleeve seams.



DESIGN 6

**JACKET • Cool Air Fine • Silkhair Lusso**  
**Size 36 – 42 (44 – 50)**

Instructions are given for first size. Figure in parenthesis refers to larger size. When only one figure is given, it applies to both sizes.

**Materials:** 250 (300) g of Lana Grossa **Cool Air Fine** (50% Merino wool, 28% baby alpaca, 22% acrylic; 240 m/50 g) in Taupe (**col 11**) and 150 (175) g of Lana Grossa **Silkhair Lusso** (78% superkid mohair, 14% silk, 4% polyester, 4% polyamide; 210 m/25 g) in Graphite (**col 906**). Size 5.5 and 6.5 mm needles; size 5.5 mm circular needle, 100 cm long; six 20 mm snap buttons in dark grey [by Union Knopf, item 500812, col 78].

**Note:** Work with 1 strand of each yarn held tog throughout.

**Rice stitch:** Work according to chart. Numbers at left edge of chart indicate WS rows,

numbers at right edge of chart indicate RS rows. Chart begins with a WS row. Beg with sts before patt rep, work 2 sts between arrows for patt rep, end with sts after patt rep. Rep rows 1 – 4.

**St st:** K on RS, p on WS.

**Full-fashion inc:** On RS rows: M1R, 1 st in from each edge.

**Gauge:** 15 sts and 20 rows = 10 x 10 cm in rice st with size 6.5 mm needles and 1 strand of each yarn held tog.

**Back:** With size 6.5 mm needles and 1 strand of each yarn held tog cast on 81 (87) sts. Beg with a WS row work rice st according to chart and shape curved hem as foll: Working full-fashion inc, inc 1 st at each end of next RS row, then every foll RS row once. Cast on 2 sts at beg of next 4 rows = 93 (99) sts. Work increased sts into patt. Work even until piece meas 40 cm from cast-on. Place marker at each edge to indicate beg of armholes. Work even until piece meas 20 (21) cm from armhole markers, ending with a WS row. Shape shoulders: At each shoulder edge bind off 7 sts 2 (4) times, 6 sts 2 (0) times. Bind off rem 27 sts.

**Left front:** With size 6.5 mm needles and 1 strand of each yarn held tog cast on 41 (43) sts. Beg with a WS row work rice st according to chart and shape curved hem as foll: Working full-fashion inc, inc 1 st at

**Chart key:**  
⊞ = selvage st  
▢ = p1  
◆ = k1tbl

