

markers = approx. 14 (15) cm. Shape neck: Next RS row: Bind off center 15 sts at same time dec 7 sts evenly across. Working each side separately, bind off 4 sts at each neck edge once, 2 sts twice, 1 st 4 times and when same length as back to shoulders shape shoulders same as for back. No sts rem.

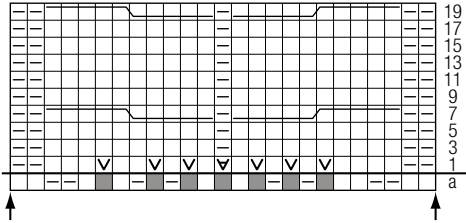
Sleeves: With size 4.5 mm needles and 2 strands Dark Grey held tog cast on 42 sts. Next WS row: Slip garter selvage, p1, * k2, p2; rep from * to last 4 sts, k2, p1, slip garter selvage. Next RS row: Slip garter selvage, work sts as they appear to last st, slip garter selvage. Cont in rib patt as established until piece meas 5 cm from cast-on, ending with a WS row. Change to size 5 mm needles. Work in garter st, follow stripe sequence and shape sleeve as foll: Inc

1 st at each end of 11th (3rd) row, then every 12th row 5 (6) times, then every 10th row 6 times = 66 (68) sts. Work even until piece meas approx. 56.5 cm from cast-on and 144 rows have been worked in garter st and stripe sequence. Loosely bind off all sts.

Finishing: Pin pieces to measurements and

block. Sew shoulder seams. With size 4.5 mm circular needle and 2 strands Dark Grey held tog pick up and k 82 sts evenly around neck edge. Join for working in rnds. Work garter st in rnds for 1.5 cm. Loosely bind off all sts kwise. Sew on sleeves between markers. Sew side and sleeve seams.

Chart



DESIGN 17

COWL • Silkchair • Silkchair Print

Approx. 66 cm in circumference and 46 cm wide.

Materials: 25 g each of Lana Grossa **Silkchair** (70% superkid mohair, 30% silk; 210 m/25 g) in Blue Petrol (col 121), Carnation (col 76), Red Violet (col 100) and Light Olive (col 108) and 75 g in Dark Grey (col 12) and 50 g of Lana Grossa **Silkchair Print** (70% superkid mohair, 30% silk; 400 m/50 g) in Orange/Red/Pink/Salmon (col 318). Size 7.5 mm circular needle, 60 cm long.

Note: Work with 4 strands of yarn held tog throughout.

Garter stitch in rnds: P 1 rnd, k 1 rnd alternately throughout.

Gauge: 11 sts and 20.5 rnds = 10 x 10 cm in garter st with size 7.5 mm needles and 4 strands of yarn held tog.

Instructions: With size 7.5 mm circular needle and 4 strands Dark Grey held tog cast on 72 sts. Place beg of rnd marker and join for working in rnds. Work garter st in rnds for 3 rnds. Cont in garter st and work stripes as foll: Work * 4 rnds each with Orange/Red/Pink/Salmon, Light Olive, Red Violet, Carnation, Blue Petrol *, Dark Grey. Rep 20 rnds from * to * once more. Change to Dark Grey and cont until piece meas approx. 46 cm and 93 rnds have been worked from cast-on. Loosely bind off all sts.

Finishing: Carefully weave in all ends. Wear cowl with stripes showing or Dark Grey showing.



DESIGN 18

PULLOVER • Cloud

Instructions are given for first size. Figure in parenthesis refers to larger size. When only one figure is given, it applies to both sizes.

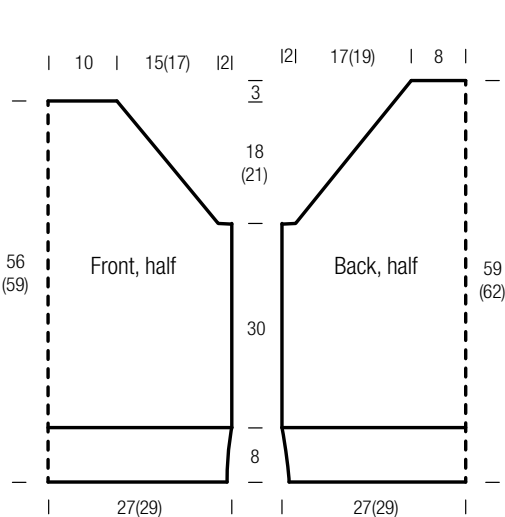
Materials: 350 (400) g of Lana Grossa **Cloud** (80% alpaca, 14% Merino wool, 6% polyamide; 80 m/50 g) in Red Violet (col 27). Size 7 and 8 mm needles; size 7 mm circular needle, 50 cm long; cable needle [cn].

Slip garter selvage: On every row: Sl first st kwise, k last st. Note: Work a slip garter selvage throughout.

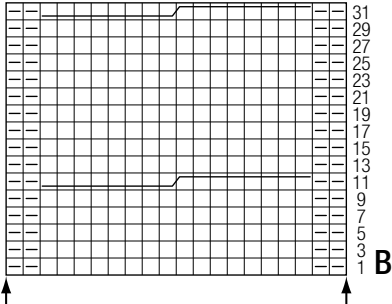
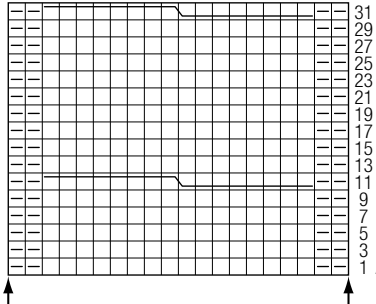
Rib patt: K2, p2.

St st: K on RS, p on WS.

Cable charts A and B: Worked over 20 sts. Numbers at right edge of charts indicate RS rows; on WS rows, work sts as they appear. Work rows 1 – 32 once, then rep rows 13 – 32.



Charts A and B



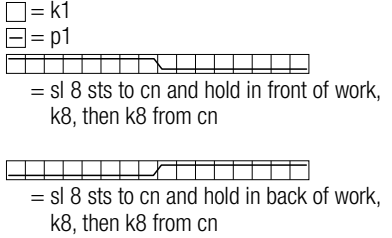
Full-fashion dec [raglan shaping]: At beg of RS rows, slip st selvage, skp (sk2p); at end of RS rows, work to last 3 (4) sts, k2tog (k3tog), slip garter selvage = 1 (2) st(s) decreased at each edge.

Gauge: 10 sts and 14 rows = 10 x 10 cm in St st on size 8 mm needles; 20-st cable charts = approx. 12 cm wide.

Back: With size 7 mm needles cast on 56 (60) sts. Next WS row: Slip garter selvage, * p2, k2; rep from * to last 3 sts, p2, slip garter selvage. Next RS row: Work sts as they appear. Cont in rib patt as established until piece meas 8 cm from cast-on, ending with a WS row. Change to size 8 mm needles. Work in St st until piece meas 38 cm from cast-on, ending with a WS row. Shape raglan armholes: Bind off 2 sts at beg of next 2 rows. Working full-fashion dec, dec 1 st at each end of next 11 (13) RS rows, then dec 2 sts at each end of next 3 RS rows. Bind off rem 18 sts.

Front: Work same as for back to armholes, ending with a WS row. Shape raglan armholes: Bind off 2 sts at beg of next 2 rows.

Chart key:



Working full-fashion dec, dec 1 st at each end of next 9 (11) RS rows, then dec 2 sts at each end of next 3 RS rows. Bind off rem 22 sts.

Left sleeve: With size 7 mm needles cast on 34 (38) sts. Next WS row: Selvage st, p1, * k2, p2; rep from * to last 4 sts, k2, p1, selvage st. Next RS row: Work sts as they appear. Cont in rib patt as established until piece meas 5 cm from cast-on, ending with a WS row. Change to size 8 mm needles. Next RS row: Slip garter selvage, work in St st over next 6 (8) sts, work row 1 of cable chart A over next 20 sts, work in St st over next 6 (8) sts, slip garter selvage. Cont in patt as established and shape sleeve as foll: Inc 1 st at each end of 3rd row, then every 8th row 5 times, working incs as foll: Slip garter selvage, k1f&b, k to last 2 sts, k1f&b, slip garter selvage = 46 (50) sts. Work even until piece meas 40 cm from cast-on, ending with a WS row. Shape sleeve cap: Bind off 2 sts at beg of next 2 rows. Working full-fashion dec, dec 1 st at each end of next 15 (17) RS rows. Work 1 WS row. Dec 1 st at beg of next RS row, bind off 5 sts at beg of next WS row. Dec 1 st at beg of next RS row. Bind off rem