

Design 3 – Crocheted Stole



You'll need **150 g** of Lana Grossa **Twisted Cashmerino** (90% pure wool, 10% cashmere; 900 m/150 g) in Silver Grey/Turquoise/Yellow-Green/Aubergine (**col 807**). Size 3.5 mm crochet hook.

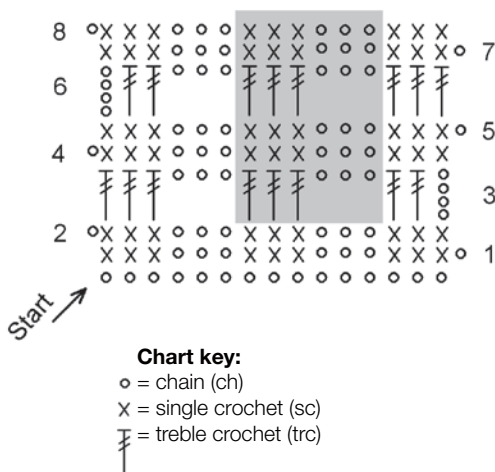
Size: 36 cm wide x 170 cm long

Gauge: 29 sts and 15 rows = 10 x 10 cm in crochet patt with size 3.5 mm hook.

Crochet patt: Multiple of 6 + 3. Work according to chart. Numbers at right edge of chart indicate RS rows, numbers at left edge of chart indicate WS rows.

Instructions: Ch 453 + ch 1. Working first sc in 2nd ch from hook, work row 1 of crochet patt chart. Cont to foll chart through row 8, then rep rows 3 – 8 until yarn is used up. Fasten off.

Finishing: Carefully weave in all ends. Pin piece to measurements and block.



Design 4 – Crocheted Scarf



You'll need **200 g** of Lana Grossa **Shades of Alpaca Silk** (45% pure wool, 35% baby alpaca, 20% silk; 680 m/200 g) in Grey-Brown/Khaki/Red Violet/Dark Red/Clay Red (**col 313**). Size 4 mm crochet hook.

Size: 21 cm wide x 175 cm long

Gauge: 20 dc and 9 rows = 10 x 10 cm with size 4 mm hook.

Crochet patt: Work according to chart. Chart shows scarf in its entirety. Numbers at right edge of chart indicate RS rows, numbers at left edge of chart indicate WS rows. Rep rows 5 and 6.

Dc clusters: * Yo, insert hook into st, draw loop through. Yo, draw through 2 loops.* Rep from * to * 3 times more =

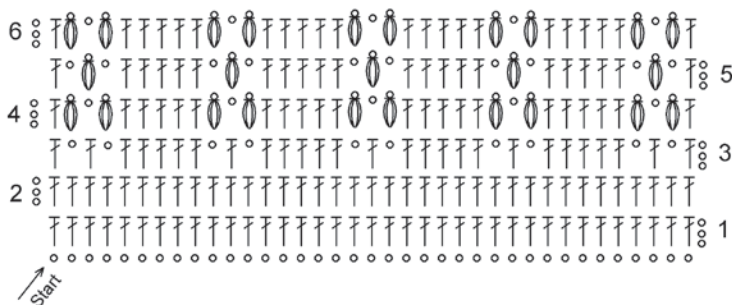
5 loops on hook. Yo, draw through all loops on hook, sc in top of cluster.

Instructions: Ch 37 + ch 3. Working first dc in 4th ch from hook, work row 1 of crochet patt chart. Note that ch 3 does not count as dc. Cont to foll chart through row 4, then rep rows 5 and 6 until yarn is almost used up. Work chart rows 1 and 2 once more. Fasten off.

Finishing: Carefully weave in all ends. Pin piece to measurements and block.

Chart key:

- = chain (ch)
- ⌈ = double crochet (dc)
- ⌈ = dc cluster



Design 5 – Triangular Shawl with Eyelet Rows



You'll need **200 g** of Lana Grossa **Shades of Alpaca Silk**
(45% pure wool, 35% baby alpaca, 20% silk; 680 m/200 g)
in Bordeaux/Mint/Khaki/Cyclamen (**col 311**).
Size 4.5mm circular needles, 60 and 80 cm long.

Size: 78 cm along center spine, 165 cm along long edge

Gauge: 19 sts and 28 rows = 10 x 10 cm in St st on size 4.5 mm needles.

St st: K on RS, p on WS.

Eyelet row: *Yo, k2tog; rep from * to end.

M1R: Lift strand between sts from the back and knit this strand through the front loop – 1 st increased.

Instructions: Shawl is worked from the point up. Pulling yarn from center of ball (= bordeaux), cast on 5 sts. P 1 WS row. Row 1 [RS]: K1, yo, k1, M1R, k1, M1R, k1, yo, k1 = 4 sts increased and 9 sts total. Row 2 and all foll WS rows: P all sts and yos. Row 3: K1, yo, k2, M1R, k3, M1R, k2, yo, k1 = 13 sts. Row 5: K1, yo, k4, M1R, k3, M1R, k4, yo, k1 = 17 sts. Row 7: K1, yo, k6, M1R, k3,

M1R, k6, yo, k1 = 21 sts. Row 9 [eyelet row]: K1, yo, [k2tog, yo] 4 times, k1, yo, k1 (= center st), yo, k1, [yo k2tog] 4 times, yo, k1 = 25 sts. Rows 10-18: Inc 4 sts every RS row as established = 41 sts. Row 19 [eyelet row]: K1, yo, [k2tog, yo] 9 times, k1, yo, k1 (= center st), yo, k1, [yo, k2tog] 9 times, yo, k1 = 45 sts. Rep rows 10-20 throughout, cont to inc 4 sts every RS row as established. Change to circular needles as st count increases. When 345 sts are on the needle or yarn is almost used up, and ending with an eyelet row, loosely bind off all sts.

Finishing: Carefully weave in all ends.