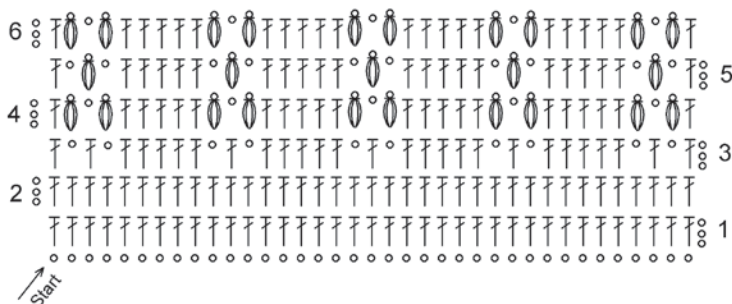


**Chart key:**

- = chain (ch)
- ⌈ = double crochet (dc)
- ⌈ = dc cluster



## Design 5 – Triangular Shawl with Eyelet Rows



You'll need **200 g** of Lana Grossa **Shades of Alpaca Silk**  
(45% pure wool, 35% baby alpaca, 20% silk; 680 m/200 g)  
in Bordeaux/Mint/Khaki/Cyclamen (**col 311**).  
Size 4.5mm circular needles, 60 and 80 cm long.

**Size:** 78 cm along center spine, 165 cm along long edge

**Gauge:** 19 sts and 28 rows = 10 x 10 cm in St st on size 4.5 mm needles.

**St st:** K on RS, p on WS.

**Eyelet row:** \*Yo, k2tog; rep from \* to end.

**M1R:** Lift strand between sts from the back and knit this strand through the front loop – 1 st increased.

**Instructions:** Shawl is worked from the point up. Pulling yarn from center of ball (= bordeaux), cast on 5 sts. P 1 WS row. Row 1 [RS]: K1, yo, k1, M1R, k1, M1R, k1, yo, k1 = 4 sts increased and 9 sts total. Row 2 and all foll WS rows: P all sts and yos. Row 3: K1, yo, k2, M1R, k3, M1R, k2, yo, k1 = 13 sts. Row 5: K1, yo, k4, M1R, k3, M1R, k4, yo, k1 = 17 sts. Row 7: K1, yo, k6, M1R, k3,

M1R, k6, yo, k1 = 21 sts. Row 9 [eyelet row]: K1, yo, [k2tog, yo] 4 times, k1, yo, k1 (= center st), yo, k1, [yo k2tog] 4 times, yo, k1 = 25 sts. Rows 10-18: Inc 4 sts every RS row as established = 41 sts. Row 19 [eyelet row]: K1, yo, [k2tog, yo] 9 times, k1, yo, k1 (= center st), yo, k1, [yo, k2tog] 9 times, yo, k1 = 45 sts. Rep rows 10-20 throughout, cont to inc 4 sts every RS row as established. Change to circular needles as st count increases. When 345 sts are on the needle or yarn is almost used up, and ending with an eyelet row, loosely bind off all sts.

**Finishing:** Carefully weave in all ends.