



www.lanagrossa.com

PULLOVER · SILKHAIR PRINT & SILKHAIR

Design 04 from Filati About Berlin 06

Photo: © Sabrina Theissen

PULLOVER · SILKHAIR PRINT & SILKHAIR

Design 04 from Filati About Berlin 06



www.lanagrossa.com

Size 36/38 (40/42, 44/46)

Instructions are given for first size. Figures in parenthesis refer to larger sizes. When only one figure is given, it applies to all sizes.

Materials: 100 (150, 200) g of Lana Grossa **Silkhair Print** (70% mohair, 30% silk; 400 m/50 g) in Natural/Light Grey/Dark Grey/Black (**col 323**) and 100 (125, 150) g of Lana Grossa **Silkhair** (70% mohair, 30% silk; 210 m/25 g) in Sky Blue (**col 92**). Size 4 and 8 mm needles.

Note: Work with 2 strands of yarn held tog throughout.

Rib patt: K1, p1.

St st: K on RS, p on WS.

Intarsia charts A and B: Work in St st according to charts. Foll chart A for back, foll chart B for front. Numbers at right edge of charts indicate RS rows, numbers at left edge of charts indicate WS rows. Beg and end as indicated for desired size. Work rows 23 – 41 once. Work each block of color with separate ball of yarn or bobbin. Twist yarns around each other at each color change to prevent holes.

Intarsia charts C and D: Work in St st according to charts. Foll chart C for left sleeve, foll chart D for right sleeve. Numbers at right edge of charts indicate RS rows, numbers at left edge of charts indicate WS rows. Beg and end as indicated for desired size. Work rows 27 – 38 once. Work each block of color with separate ball of yarn or bobbin. Twist yarns around each other at each color change to prevent holes.

German short row [gsr]: Turn work after having worked the number of sts indicated in pattern. Sl 1 st as if to purl with yarn in front of work, bring yarn to

back of work over top of the needle and pull it very **tightly**; this will rotate the st to the back of the needle, creating a 'double stitch'. Complete the gsr by working both loops of the 'double stitch' tog as you come to them.

Gauge: 9.5 sts and 13 rows = 10 x 10 cm in St st with size 8 mm needles and 2 strands of yarn held tog.

Back: With size 4 mm needles and 2 strands Sky Blue held tog cast on 86 (94, 102) sts. Work in rib patt until piece meas 8 cm from cast-on, ending with a WS row. Change to size 8 mm needles. Next RS row: Selvage st, k2tog across row to last st, end selvage st = 44 (48, 52) sts. Work in St st for 5 rows. Next RS inc row: Inc 1 st at each end of row. Rep inc row every 6th row once, then every 4th row 7 times = 62 (66, 70) sts. At same time, when piece meas approx. 17 cm from end of rib patt and 22 rows have been worked in St st from end of rib patt, work rows 23 – 41 of Intarsia chart A. Cont in St st with 2 strands Natural/Light Grey/Dark Grey/Black held tog until piece meas 42.5 cm from cast-on, ending with a WS row. Shape raglan: Bind off 3 (3, 4) sts at beg of next 2 rows, then bind off [1 st at beg of next 2 rows, 2 sts at beg of next 2 rows] 6 times, then bind off 1 st at beg of next 0 (0, 2) rows, 2 sts at beg of next 0 (2, 2) rows. Bind off rem 20 sts. Piece meas 61 (62.5, 64) cm from cast-on.

Front: Work same as for back until piece meas 17 cm from end of rib patt and 22 rows have been worked in St st from end of rib patt. Work rows 23 – 41 of Intarsia chart B. Cont same as for back until piece meas 55 (56.5, 58) cm from cast-on. Shape neck: Next RS row: Place center 10 sts on holder. Working each side separately and working German short rows, leave 2 sts unworked at each neck edge once, 1 st once and when piece meas 61 (62.5,

64) cm from cast-on, bind off rem 2 sts for each shoulder.

Left sleeve: With size 4 mm needles and 2 strands Sky Blue held tog cast on 40 (44, 48) sts. Work in rib patt until piece meas 7 cm from cast-on, ending with a WS row. Change to size 8 mm needles. Next RS row: Selvage st, k2tog across row to last st, end selvage st = 21 (23, 25) sts. Work in St st for 5 (3, 3) rows. Next RS inc row: Inc 1 st at each end of row. Rep inc row every 4th row 10 (11, 10) times, then every other row 0 (0, 2) times = 43 (47, 51) sts. At same time, when piece meas approx. 20 cm from end of rib patt and 26 rows have been worked in St st from end of rib patt, work rows 27 – 38 of Intarsia chart C. Cont in St st with 2 strands Natural/Light Grey/Dark Grey/Black held tog until piece meas 45 cm from cast-on, ending with a WS row. Shape sleeve cap: Bind off 3 (3, 4) sts at beg of next 2 rows, 1 st at beg of next 26 (26, 28) rows, 2 sts at beg of next 0 (2, 2) rows. Bind off rem 11 sts. Piece meas 66 (68, 70) cm from cast-on.

Right sleeve: Work same as for left sleeve, but foll Intarsia chart D in place of C.

Finishing: Pin pieces to measurements and block. With size 8 mm needles and 2 strands Natural/Light Grey/Dark Grey/Black held tog bind off 16 sts left unworked at front neck edge. Sew raglan, side and sleeve seams.

PULLOVER · SILKHAIR PRINT & SILKHAIR

Design 04 from Filati About Berlin 06



www.lanagrossa.com

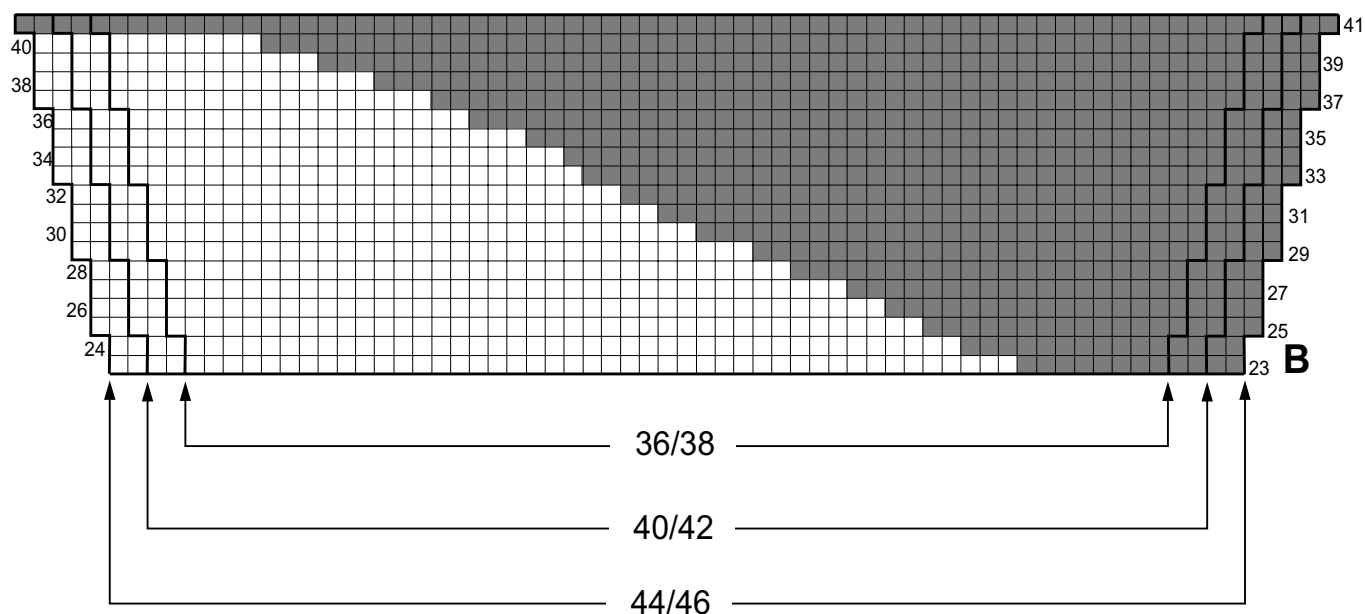
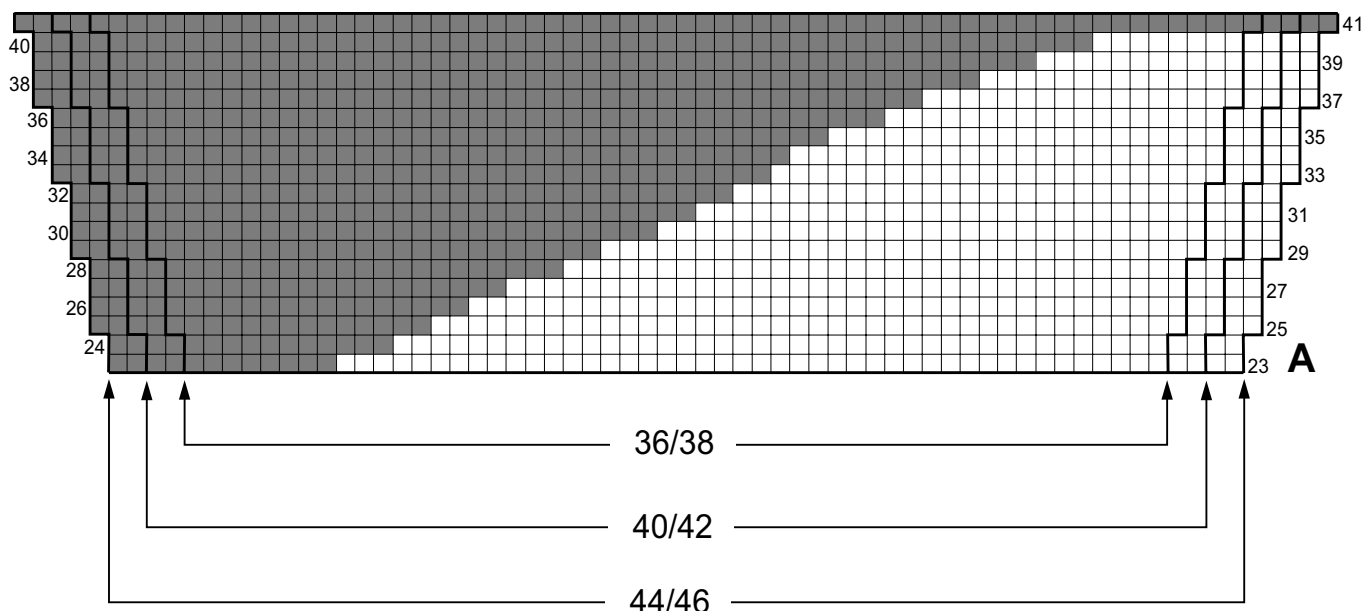


Chart key:

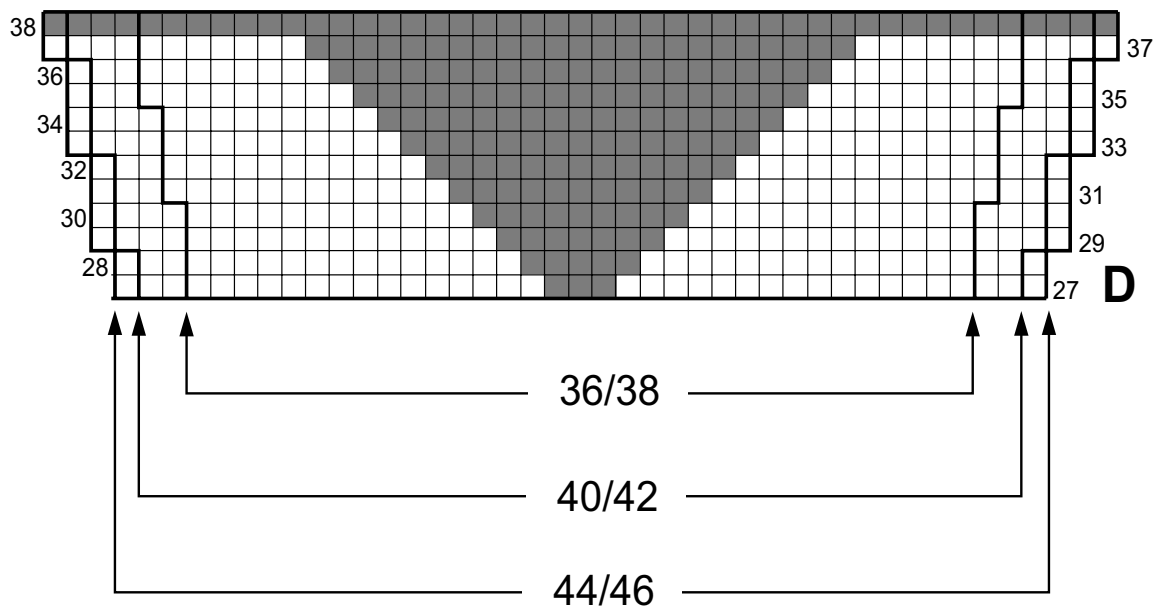
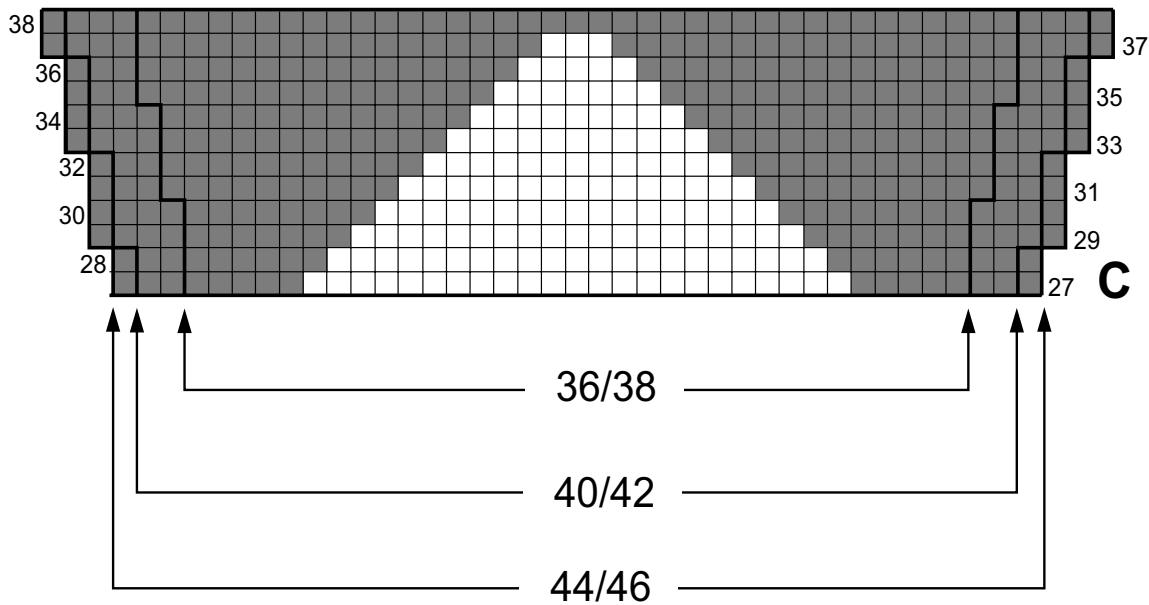
- = 1 st in Sky Blue
- = 1 st in Natural/LightGrey/Black

PULLOVER · SILKHAIR PRINT & SILKHAIR

Design 04 from Filati About Berlin 06



www.lanagrossa.com

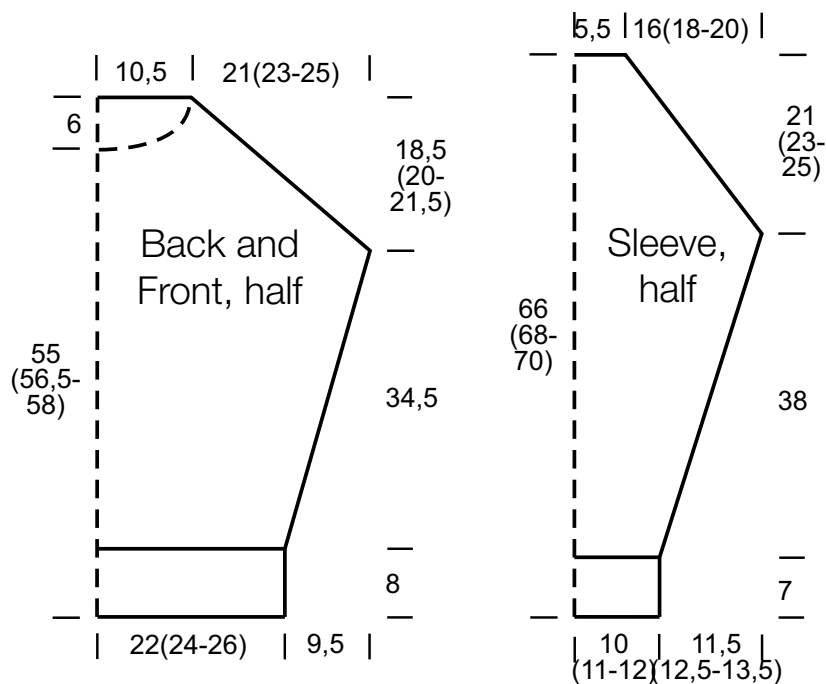


PULLOVER · SILKHAIR PRINT & SILKHAIR

Design 04 from Filati About Berlin 06



www.lanagrossa.com



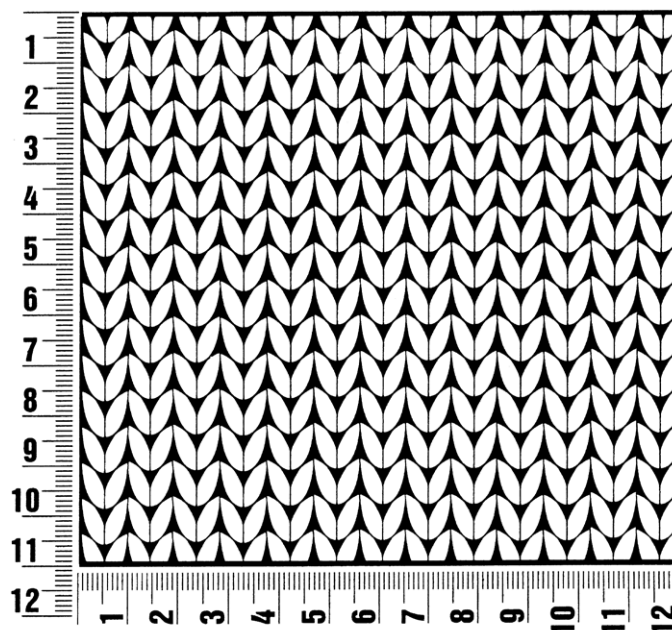
Filati About Berlin 06

www.lanagrossa.com

Gauge Swatch

Before you begin ...

...make a gauge swatch. Use the recommended needles, yarns and pattern stitch for your gauge swatch. It should measure approx. 12 cm x 12 cm. Cast-on and bind-off rows, as well as selvage stitches should not be included in the measurement. Pin your swatch and block it as you would the finished pieces of the garment. Count stitches and rows over 10 cm. If your gauge swatch is too small, switch to larger needles. If your gauge swatch is too big, switch to smaller needles.



Abbreviations

beg = begin(ning) · **ch** = chain · **cont** = continue · **dec** = decreas(e)(ing) · **inc** = increas(e)(ing) · **k** = knit · **kwise** = as if to knit
meas = measures · **M1L** = lift strand between sts from front to back and knit this strand through the back loop · **M1R** = lift strand between sts from the back and knit this strand through the front loop · **patt** = pattern · **pm** = place marker · **p** = purl
pwise = as if to purl · **rem** = remain(ing) · **rep** = repeat(s) · **rev St st** = reverse stockinette stitch · **rnd(s)** = round(s) · **RS** = right side · **sc** = single crochet · **skp** = slip 1 stitch as if to knit, knit 1 stitch, pass slipped stitch over knitted stitch · **sk2p** = slip 1 stitch as if to knit, knit 2 together, pass slipped stitch over knitted stitch · **s2kp** = slip 2 stitches as if to knit, k 1 stitch, pass slipped stitches over knitted stitch · **sl** = slip · **st(s)** = stitch(es) · **St st** = stockinette stitch · **tbl** = through the back loop · **tog** = together · **wyib** = with yarn in back of work · **wyif** = with yarn in front of work · **WS** = wrong side · **yo(s)** = yarn over(s)

Publisher's Info

Publisher: Lana Grossa GmbH, Gaimersheim, www.lanagrossa.com

Photographer: Sabrina Theissen