



[www.lanagrossa.com](http://www.lanagrossa.com)

# SCARF · SILKHAIR PRINT & SILKHAIR

Design 05 from Filati About Berlin 06

Photo: © Sabrina Theissen

# SCARF · SILKHAIR PRINT & SILKHAIR

## Design 05 from Filati About Berlin



www.lanagrossa.com

**Size** 20 x 176 cm

**Materials:** 50 g each of Lana Grossa **Silkhair Print** (70% superkid mohair, 30% silk; 400 m/50 g) in Natural/Light Grey/Dark Grey/Black (**col 323**) and Lana Grossa **Silkhair** (70% superkid mohair, 30% silk; 210 m/25 g) in Sky Blue (**col 92**). Size 5 mm needles.

**Note:** Work with 2 strands of each col held tog throughout.

**St st:** K on RS, p on WS.

**Intarsia patt:** Work in St st according to chart. Numbers at right edge of chart indicate RS rows, numbers at left edge of chart indicate WS rows. Work rows 1

– 20 once. Work each block of color with separate ball of yarn or bobbin. Twist yarns around each other at each color change to prevent holes.

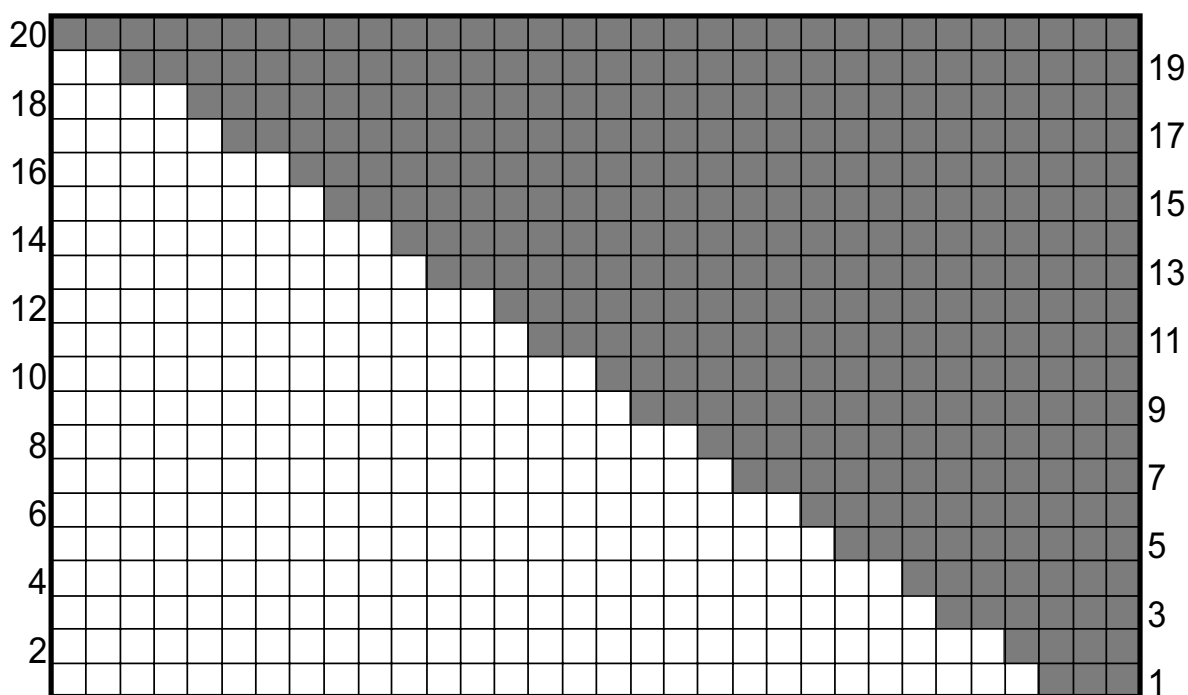
**Gauge:** 16 sts and 18 rows = 10 x 10 cm in St st with size 5 mm needles and 2 strands of yarn held tog.

**Instructions:** With size 5 mm needles and 2 strands Sky Blue held tog, cast on 32 sts. Work in St st until piece meas 83 cm from cast-on, ending with a WS row. Work rows 1 – 20 of Intarsia patt chart. With 2 strands Natural/Light Grey/Dark Grey/Black held tog, work in St st until piece meas 176 cm from cast-on. Bind off all sts.

### Chart key:

□ = 1 st in Sky Blue

■ = 1 st in Natural/Light Grey/Dark Grey/Black



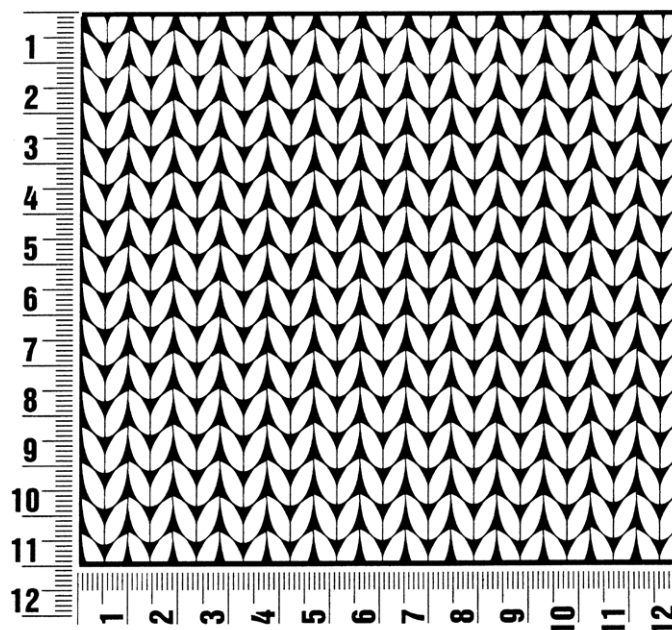
# Filati About Berlin 06

www.lanagrossa.com

## Gauge Swatch

### Before you begin ...

...make a gauge swatch. Use the recommended needles, yarns and pattern stitch for your gauge swatch. It should measure approx. 12 cm x 12 cm. Cast-on and bind-off rows, as well as selvage stitches should not be included in the measurement. Pin your swatch and block it as you would the finished pieces of the garment. Count stitches and rows over 10 cm. If your gauge swatch is too small, switch to larger needles. If your gauge swatch is too big, switch to smaller needles.



## Abbreviations

**beg** = begin(ning) · **ch** = chain · **cont** = continue · **dec** = decreas(e)(ing) · **inc** = increas(e)(ing) · **k** = knit · **kwise** = as if to knit  
**meas** = measures · **M1L** = lift strand between sts from front to back and knit this strand through the back loop · **M1R** = lift strand between sts from the back and knit this strand through the front loop · **patt** = pattern · **pm** = place marker · **p** = purl  
**pwise** = as if to purl · **rem** = remain(ing) · **rep** = repeat(s) · **rev St st** = reverse stockinette stitch · **rnd(s)** = round(s) · **RS** = right side · **sc** = single crochet · **skp** = slip 1 stitch as if to knit, knit 1 stitch, pass slipped stitch over knitted stitch · **sk2p** = slip 1 stitch as if to knit, knit 2 together, pass slipped stitch over knitted stitch · **s2kp** = slip 2 stitches as if to knit, k 1 stitch, pass slipped stitches over knitted stitch · **sl** = slip · **st(s)** = stitch(es) · **St st** = stockinette stitch · **tbl** = through the back loop · **tog** = together · **wyib** = with yarn in back of work · **wyif** = with yarn in front of work · **WS** = wrong side · **yo(s)** = yarn over(s)

### Publisher's Info

**Publisher:** Lana Grossa GmbH, Gaimersheim, [www.lanagrossa.com](http://www.lanagrossa.com)

**Photographer:** Sabrina Theissen