



www.lanagrossa.com

KIMONO PULLOVER · GOMITOLO SILKHAIR & LANDLUST MERINO 180

Design 27 from Filati Home 70

KIMONO PULLOVER · GOMITOLO

SILKHAIR & LANDLUST MERINO 180

Design 27 from Filati Home 70



www.lanagrossa.com

Size 36 – 40 (42 – 46)

Instructions are given for first size. Figure in parenthesis refers to larger size. When only one figure is given, it applies to both sizes.

Materials: **200 g** of Lana Grossa **Gomitolo Silkhair** (65% superkid mohair, 30% silk, 5% pure wool; 800 m/100 g) in Beige Mélange (**col 201**) and **400 (450) g** of Lana Grossa **Landlust Merino 180** (100% superwash Merino wool; 180 m/50 g) in Pastel Pink (**col 202**). Size 6 and 7 mm needles; size 6 and 7 mm circular needles, each 50 cm long.

Note: Work with 1 strand of each yarn held tog throughout.

Slip garter selvage: On every row: Sl first st kwise, k last st. **Note:** Work a slip garter selvage at each edge throughout.

Garter st: K every row.

Rib patt: K2, p2.

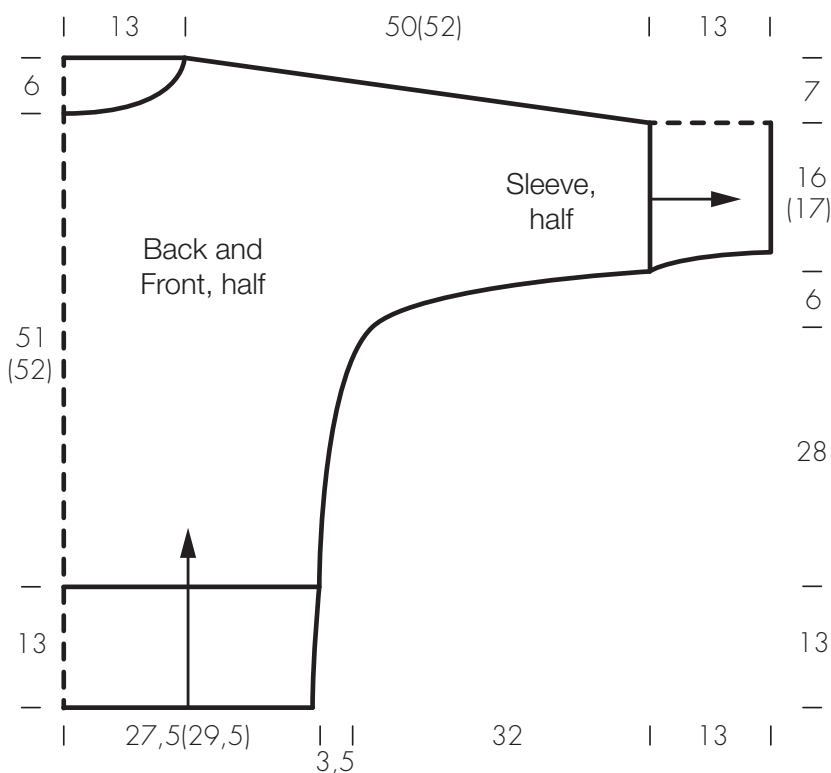
Gauge: 16 sts and 26 rows = 10 x 10 cm in garter st with size 7 mm needles and 1 strand of each yarn held tog.

Back: With size 6 mm needles and 1 strand of each yarn held tog cast on 90 (98) sts. Next WS row: Slip garter selvage, p1, * k2, p2; rep from * to last 4 sts, k2, p1, slip garter selvage. Next RS row: Slip garter selvage, work sts as they appear, end slip garter selvage. Maintaining slip garter selvage at each edge, cont in rib patt as established until piece meas 13 cm from cast-on, ending with a WS row. Change to size 7 mm needles. Maintaining slip garter selvage at each edge, work in garter st and shape sides as foll: Inc 1 st at each end of 13th row worked in garter st, then every 12th row twice, then every 10th row 3 times = 102 (110) sts. Work even until piece meas 41 cm from cast-on, ending with a WS row. Shape sleeves:

Inc 1 st at each end of next 2 RS rows, then cast on 2 sts at beg of next 4 rows, 3 sts at beg of next 2 rows, 4 sts at beg of next 2 rows, 8 sts at beg of next 2 rows, 30 sts at beg of next 2 rows = 204 (212) sts. Work even until sleeve meas 16 (17) cm from last cast-on row, ending with a WS row. Shape shoulders/overarms: Bind off 10 st at beg of next 2 rows, then 9 sts at beg of next 16 rows (then 10 sts at beg of next 8 rows, 9 sts at beg of next 8 rows). Bind off rem 40 sts.

Front: Work same as for back to shoulder/overarm shaping. Shape shoulders/overarms same as for back. At same time, when piece meas 1 cm from beginning of shoulder/overarm shaping, shape neck: Next RS row: Bind off center 22 sts. Working each side separately, bind off 3 sts at each neck edge once, 2 sts once, 1 st 4 times. No sts rem.

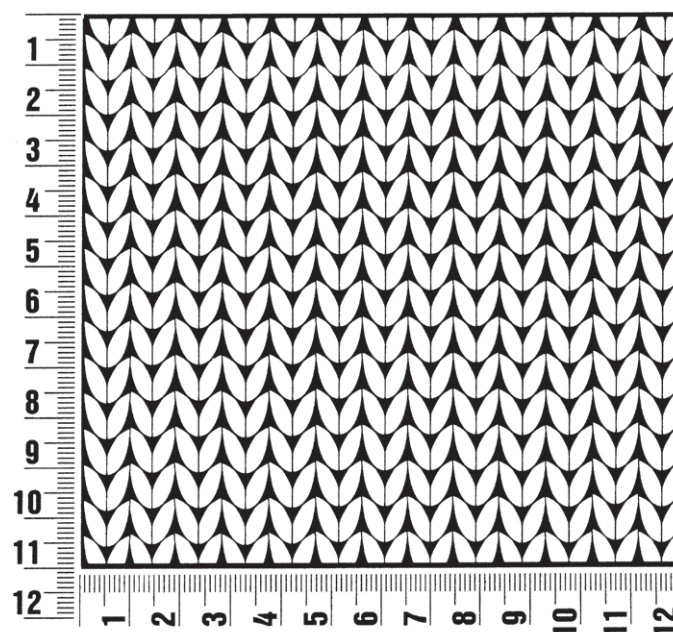
Finishing: Pin pieces to measurements and block. Sew shoulder/overarm seams. Sleeve cuffs: With size 6 mm circular needle and 1 strand of each yarn held tog pick up and k 58 (62) sts evenly along bottom edge of sleeve. Next WS row: Slip garter selvage, p1, * k2, p2; rep from * to last 4 sts, k2, p1, slip garter selvage. Next RS row: Slip garter selvage, work sts as they appear, end slip garter selvage. Maintaining slip garter selvage at each edge, cont in rib patt as established until cuff meas 13 cm. Bind off all sts in rib. Sew side and sleeve seams. With size 6 mm circular needle and 1 strand of each yarn held tog pick up and k 100 sts evenly around neck edge. Join for working in rnds. Work rib patt in rnds for 5 cm. Change to size 7 mm circular needle. Cont in rib patt for 16 cm. Loosely bind off all sts in rib.



Gauge Swatch

Before you begin ...

...make a gauge swatch. Use the recommended needles, yarns and pattern stitch for your gauge swatch. It should measure approx. 12 cm x 12 cm. Cast-on and bind-off rows, as well as selvage stitches should not be included in the measurement. Pin your swatch and block it as you would the finished pieces of the garment. Count stitches and rows over 10 cm. If your gauge swatch is too small, switch to larger needles. If your gauge swatch is too big, switch to smaller needles.



Abbreviations

beg = begin(ning) · **ch** = chain · **cont** = continue · **dec** = decreas(e)(ing) · **inc** = increas(e)(ing) · **k** = knit · **kwise** = as if to knit
meas = measures · **M1L** = lift strand between sts from front to back and knit this strand through the back loop · **M1R** = lift strand between sts from the back and knit this strand through the front loop · **patt** = pattern · **pm** = place marker · **p** = purl
pwise = as if to purl · **rem** = remain(ing) · **rep** = repeat(s) · **rev St st** = reverse stockinette stitch · **rnd(s)** = round(s) · **RS** = right side · **sc** = single crochet · **skp** = slip 1 stitch as if to knit, knit 1 stitch, pass slipped stitch over knitted stitch · **sk2p** = slip 1 stitch as if to knit, knit 2 together, pass slipped stitch over knitted stitch · **s2kp** = slip 2 stitches as if to knit, k 1 stitch, pass slipped stitches over knitted stitch · **sl** = slip · **st(s)** = stitch(es) · **St st** = stockinette stitch · **tbl** = through the back loop · **tog** = together · **wyib** = with yarn in back of work · **wyif** = with yarn in front of work · **WS** = wrong side · **yo(s)** = yarn over(s)

Publisher's Info

Publisher: Lana Grossa GmbH, Gaimersheim, www.lanagrossa.com

Photographer: Herbert Dehn, www.herbertdehn.com