



[www.lanagrossa.com](http://www.lanagrossa.com)

**ROMPER · BABY SOFT**  
Design 01 from Infanti 14

Photo: © Julia Imhoff

# ROMPER · BABY SOFT

## Design 01 from Infanti 14



www.lanagrossa.com

**Size** 56/62 (68/74, 80/86)

Instructions are given for first size. Figures in parenthesis refer to larger sizes. When only one figure is given, it applies to all sizes.

**Materials:** 50 (50, 100) g of Lana Grossa **Baby Soft** (60% polyamide, 40% cotton; 150 m/50 g) in Light Blue (**col 8**) and 50 g in White (**col 1**). Size 4 mm needles; size 4 mm circular needle, 40 cm long; two 12 mm buttons.

**Garter st in rows:** K every row.

**Garter st in rnds:** K 1 rnd, p 1 rnd alternately throughout.

**St st in rows:** K on RS, p on WS.

**St st in rnds:** K every rnd.

**Full-fashion dec:** At beg of RS row, work first 3 sts in garter st, k2tog; at end of RS row, work to last 5 sts, skp, work in garter st to end.

**Gauge:** 19 sts and 33 rows/rnds = 10 x 10 cm in St st on size 4 mm needles.

**Right leg:** With size 4 mm needles and White cast on 36 (40, 44) sts. Beg and end with a WS row, work in garter st until piece meas 2 cm from cast-on. Break White, cont with Light Blue. Work in St st and shape leg as foll: Inc 1 st at each end of 9 (11, 11)th row, then every 8th row twice, then every 6th row once (then every 8th row 3 times / then every 10th row 3 times) = 44 (48, 52) sts. Work even until piece meas 13 (15, 17) cm from cast-on, ending with a WS row. Leave sts on needle and break yarn.

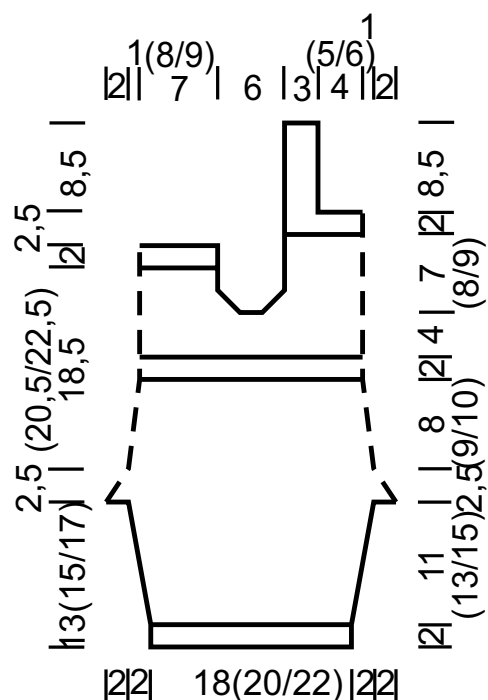
**Left leg:** With size 4 mm circular needle and White cast on 36 (40, 44) sts. Complete as given for right leg, leave sts on needle, do not break yarn.

**Body:** Next RS row: K18 (20, 22) sts across left leg, place first marker, k18 (20, 22) to end of left leg, cast on 8 sts for gusset, k18 (20, 22) sts across right leg, place 2nd marker, k18 (20, 22) to end of right leg, cast on 8 sts for gusset, k18 (20, 22) sts to first marker = beg of rnd marker. Join for working in rnds, work St st in rnds and work decs to shape gussets as foll: **Rnd 1:** K to end of rnd. **Dec rnd 2:** \* K to 1 st before gusset, skp, k to last gusset st, k2tog; rep from \* once more, k to

end of rnd. Rep rnds 1 and 2 until all gusset sts have been decreased and 80 (88, 96) sts rem on needle. Work even until piece meas 23,5 (26,5, 29,5) cm from leg cast-on. Break Light Blue, cont with White. Work in garter st for 2 cm. Break White, cont with Light Blue. Work in St st for 3 (3, 4) cm. Working 3 sts before and after each marker in garter st and rem sts in St st, cont for 1 cm. Divide for front and back at markers = 40 (44, 48) sts each for front and back and work across front sts first as foll: Next RS row: Bind off 3 sts, k37 (41, 45) and turn, leaving rem 40 (44, 48) sts on hold for back. Next WS row: Bind off 3 sts, k34 (38, 42) to end of row. Cont in St st back and forth in rows and working full-fashion dec, dec 1 st at each end of next 3 RS rows = 28 (32, 36) sts. Keeping first and last 3 sts in garter st, cont in St st until piece meas 34 (38, 42) cm from leg cast-on, ending with a WS row. Break Light Blue, cont with White. Work in garter st across all sts for 1 cm, ending with a WS row. Next RS [buttonhole] row: K2, [yo, skp] for buttonhole, k to last 4 sts, [k2tog, yo] for buttonhole, k2. Work even until piece meas 36 (40, 44) cm from leg cast-on. Bind off all sts.

**Back:** With RS facing, rejoin yarn to 40 (44, 48) back sts on hold and complete as given for front until piece meas 36.5 (40.5, 44.5) cm from leg cast-on, ending with a WS row. Break Light Blue, cont with White. Work in garter st for 2 cm, ending with a WS row. Next RS row: Bind off center 16 (20, 24) sts = 6 sts rem for each strap. Working each strap separately, work even for 8.5 cm. Bind off all sts.

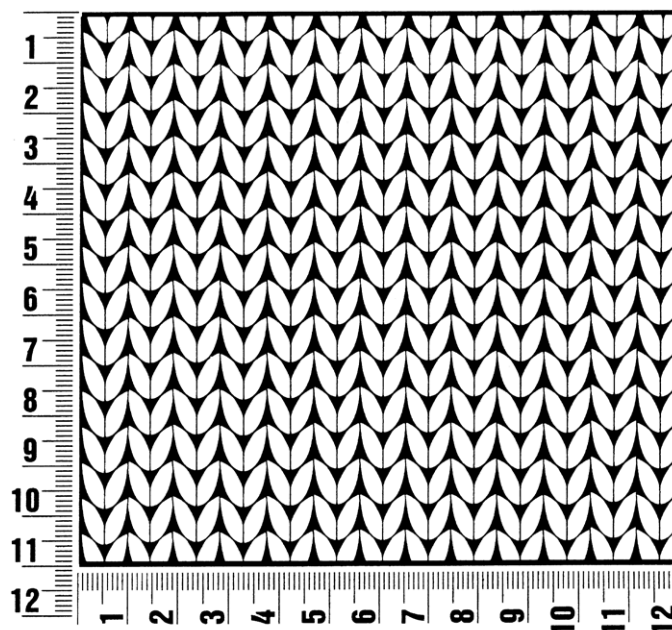
**Finishing:** Sew inseams. Sew on buttons.



## Gauge Swatch

### Before you begin ...

...make a gauge swatch. Use the recommended needles, yarns and pattern stitch for your gauge swatch. It should measure approx. 12 cm x 12 cm. Cast-on and bind-off rows, as well as selvage stitches should not be included in the measurement. Pin your swatch and block it as you would the finished pieces of the garment. Count stitches and rows over 10 cm. If your gauge swatch is too small, switch to larger needles. If your gauge swatch is too big, switch to smaller needles.



## Abbreviations

**beg** = begin(ning) · **ch** = chain · **cont** = continue · **dec** = decreas(e)(ing) · **inc** = increas(e)(ing) · **k** = knit · **kwise** = as if to knit  
**meas** = measures · **M1L** = lift strand between sts from front to back and knit this strand through the back loop · **M1R** = lift strand between sts from the back and knit this strand through the front loop · **patt** = pattern · **pm** = place marker · **p** = purl  
**pwise** = as if to purl · **rem** = remain(ing) · **rep** = repeat(s) · **rev St st** = reverse stockinette stitch · **rnd(s)** = round(s) · **RS** = right side · **sc** = single crochet · **skp** = slip 1 stitch as if to knit, knit 1 stitch, pass slipped stitch over knitted stitch · **sk2p** = slip 1 stitch as if to knit, knit 2 together, pass slipped stitch over knitted stitch · **s2kp** = slip 2 stitches as if to knit, k 1 stitch, pass slipped stitches over knitted stitch · **sl** = slip · **st(s)** = stitch(es) · **St st** = stockinette stitch · **tbl** = through the back loop · **tog** = together · **wyib** = with yarn in back of work · **wyif** = with yarn in front of work · **WS** = wrong side · **yo(s)** = yarn over(s)

### Publisher's Info

**Publisher:** Lana Grossa GmbH, Gaimersheim, www.lanagrossa.com

**Photographer:** Julia Imhoff