



www.lanagrossa.com



JACKET · BABY SOFT

Design 02 from Infanti 14

Photo: © Julia Imhoff

JACKET • BABY SOFT

Design 02 from Infanti 14



www.lanagrossa.com

Size 56/62 (68/74, 80/86)

Instructions are given for first size. Figures in parenthesis refer to larger sizes. When only one figure is given, it applies to all sizes.

Materials: 100 g of Lana Grossa **Baby Soft** (60% polyamide, 40% cotton; 150 m/50 g) in White (**col 1**) and 50 g in Light Blue (**col 8**). Size 4 mm needles; size 4 mm circular needle, 40 cm long; three 20 mm buttons.

Garter st: K every row.

St st: K on RS, p on WS.

Stripe patt: Work 8 rows each with Light Blue and White alternately throughout.

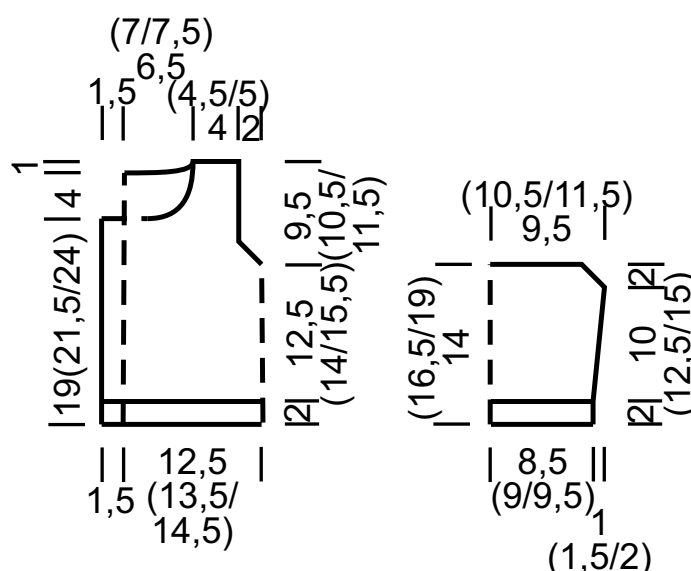
Gauge: 19 sts and 33 rows = 10 x 10 cm in St st on size 4 mm needles.

Back and fronts: Worked in one piece to underarm. With size 4 mm needles and White cast on 102 (110, 118) sts. Beg and end with a WS row work in garter st until piece meas 2 cm from cast-on. Next RS row: With White, work 4 sts in garter st for right front band; with Light Blue, work 94 (102, 110) sts in St st; with White, work 4 sts in garter st for left front band. Work each block of color with separate ball of yarn or bobbin. Twist yarns around each other at each color change to prevent holes. Place markers 27 (29, 31) sts in from each edge = 27 (29, 31) sts for each front and 48 (52, 56) sts for back. Cont in patt as established and work stripe patt over center 94 (102, 110) sts until piece meas 11.5 (12.5, 13.5) cm from cast-on, ending with a WS row. Next RS [buttonhole] row: Work in patt to last 4 sts, [k2tog, yo] for buttonhole, k2. Cont in patt until piece meas 14.5 (16, 17.5) cm from cast-on, ending with a WS row. Divide for fronts and back: Next RS row: Work 27 (29, 31) right front sts in patt and turn, leaving rem sts on hold. **Right front:** Shape armhole: Cont in patt

and bind off 1 st at beg of next 4 WS rows = 23 (25, 27) sts. Work even in patt until piece meas 19 (21.5, 24) cm from cast-on, ending with a WS row. Shape neck: Next RS row: Work in patt over first 8 (9, 10) sts and place on holder, work in patt to end. Cont in patt and bind off 3 sts at beg of next RS row, 2 sts at beg of next RS row, 1 st at beg of next RS row. Work 3 rows even, then bind off 1 st at beg of next RS row = 8 (9, 10) sts. Work even in patt until piece meas 24 (26.5, 29) cm from cast-on. Bind off rem 8 (9, 10) shoulder sts. **Back:** With RS facing, rejoin yarn to 48 (52, 56) held back sts. Cont in patt and shape armholes as foll: Bind off 1 st at beg of next 8 rows = 40 (44, 48) sts. Work even in patt until piece meas 23 (25.5, 28) cm from cast-on, ending with a WS row. Shape neck: Next RS row: Bind off center 24 (26, 28) sts. Working each side separately, work even for 1 cm. Bind off rem 8 (9, 10) sts for each shoulder. **Left front:** With RS facing, rejoin yarn to 27 (29, 31) held left front sts. Complete as for right front, reversing all shaping and at same time, when piece meas 16 (17.5, 19) cm from cast-on, work 2nd buttonhole same as first.

Sleeves: With size 4 mm needles and White cast on 34 (36, 38) sts. Beg and end with a WS row work in garter st until piece meas 2 cm from cast-on. Next, work in St st, foll stripe patt and shape sleeve as foll: Inc 1 st at each end of 13(13, 11)th row, then every 12 (10, 10)th row 1 (2, 3) time(s) = 38 (42, 46) sts. Work even until piece meas 12 (14.5, 17) cm from cast-on, ending with a WS row. Shape sleeve cap: Bind off 1 st at beg of next 6 rows. Bind off rem 32 (36, 40) sts.

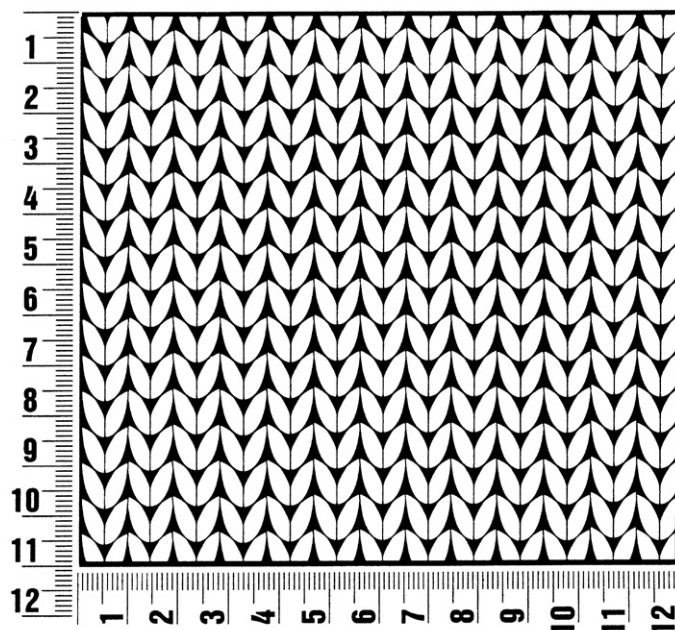
Finishing: With size 4 mm circular needle and White, k8 (9, 10) from right front neck holder, pick up and k 50 (54, 58) sts along right front, back and left front neck edge, k8 (9, 10) from left front neck holder = 66 (72, 78) sts. Work in garter st for 2 cm and at same time, when neckband meas 1 cm from pick-up row, work last buttonhole same as first 2 buttonholes. Bind off all sts. Sew in sleeves. Sew sleeve seams. Sew on buttons.



Gauge Swatch

Before you begin ...

...make a gauge swatch. Use the recommended needles, yarns and pattern stitch for your gauge swatch. It should measure approx. 12 cm x 12 cm. Cast-on and bind-off rows, as well as selvage stitches should not be included in the measurement. Pin your swatch and block it as you would the finished pieces of the garment. Count stitches and rows over 10 cm. If your gauge swatch is too small, switch to larger needles. If your gauge swatch is too big, switch to smaller needles.



Abbreviations

beg = begin(ning) · **ch** = chain · **cont** = continue · **dec** = decreas(e)(ing) · **inc** = increas(e)(ing) · **k** = knit · **kwise** = as if to knit
meas = measures · **M1L** = lift strand between sts from front to back and knit this strand through the back loop · **M1R** = lift strand between sts from the back and knit this strand through the front loop · **patt** = pattern · **pm** = place marker · **p** = purl
pwise = as if to purl · **rem** = remain(ing) · **rep** = repeat(s) · **rev St st** = reverse stockinette stitch · **rnd(s)** = round(s) · **RS** = right side · **sc** = single crochet · **skp** = slip 1 stitch as if to knit, knit 1 stitch, pass slipped stitch over knitted stitch · **sk2p** = slip 1 stitch as if to knit, knit 2 together, pass slipped stitch over knitted stitch · **s2kp** = slip 2 stitches as if to knit, k 1 stitch, pass slipped stitches over knitted stitch · **sl** = slip · **st(s)** = stitch(es) · **St st** = stockinette stitch · **tbl** = through the back loop · **tog** = together · **wyib** = with yarn in back of work · **wyif** = with yarn in front of work · **WS** = wrong side · **yo(s)** = yarn over(s)

Publisher's Info

Publisher: Lana Grossa GmbH, Gaimersheim, www.lanagrossa.com

Photographer: Julia Imhoff