



www.lanagrossa.com

BLANKET · BABY SOFT

Design 05 from Infanti 14

BLANKET · BABY SOFT

Design 05 from Infanti 14



www.lanagrossa.com

Size 70 cm wide x 64.5 cm long

Materials: 200 g of Lana Grossa **Baby Soft** (60% polyamide, 40% cotton; 150 m/50 g) in Light Blue (**col 8**) and 50 g in White (**col 1**). Size 4 mm needles; size 4 mm circular needle, 120 cm long; pompom maker.

St st: K on RS, p on WS; k every rnd.

Garter stitch in rnds: P 1 rnd, k 1 rnd alternately throughout.

Rabbit motif: Work in St st according to chart. Numbers at right edge of chart indicate RS rows; on WS rows, work sts as they appear. Work rows 1 – 84 once. Work each block of color with separate ball of yarn or bobbin. Twist yarns around each other at each color change to prevent holes.

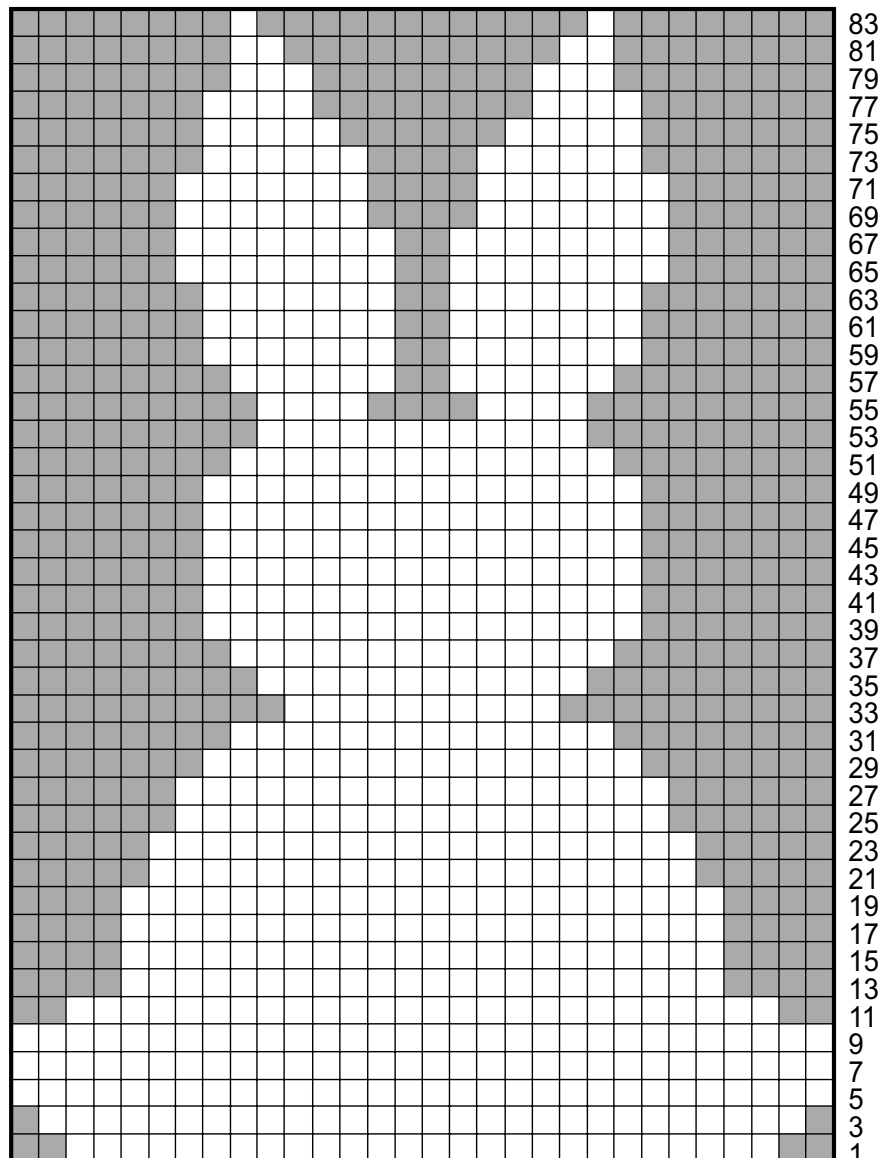
Gauge: 21 sts and 31 rows = 10 x 10 cm in St st on size 4 mm needles.

Instructions: With size 4 mm needles and Light Blue cast on 136 sts. Work in St st until piece meas 5 cm from cast-on, ending with a WS row. Next RS row: With Light Blue, k12; work row 1 of chart over next 30 sts; with Light

Blue, k to end. Work to end of chart, ending with chart row 84. With Light Blue, work in St st across all sts until piece meas 58.5 cm from cast-on. Bind off all sts.

Border: With size 4 mm circular needle and White, pick up and k 134 sts along bound-off edge, 1 st in corner, 122 sts along left side edge, 1 st in corner, 134 sts along cast-on edge, 1 st in corner, 122 sts along right side edge, 1 st in corner = 516 sts. Mark corner sts. Place beg of rnd marker and join for working in rnds. Work garter st in rnds and work corner incs as foll: Rnd 1: Purl. Rnd 2: * Knit to corner st, M1R, k1, M1R; rep from * around = 8 sts increased. Rep rnds 1 and 2 three more times, then work rnd 1 once more = 9 rnds in garter st. Next, work St st in rnds for 3 cm and work corner decs on every rnd as foll: * Knit to 1 st before corner st, s2kp; rep from * around = 8 sts decreased. Bind off all sts. Fold St st portion of border to WS and sew down. With White, make a 4 cm pompom and sew on as tail as shown in photo.

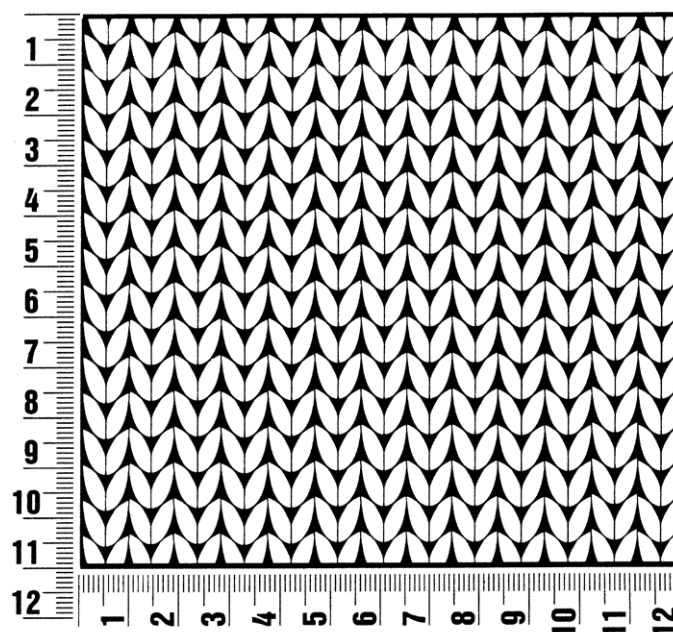
Chart key:
□ = 1 st with White
■ = 1 st with Light Blue



Gauge Swatch

Before you begin ...

...make a gauge swatch. Use the recommended needles, yarns and pattern stitch for your gauge swatch. It should measure approx. 12 cm x 12 cm. Cast-on and bind-off rows, as well as selvage stitches should not be included in the measurement. Pin your swatch and block it as you would the finished pieces of the garment. Count stitches and rows over 10 cm. If your gauge swatch is too small, switch to larger needles. If your gauge swatch is too big, switch to smaller needles.



Abbreviations

beg = begin(ning) · **ch** = chain · **cont** = continue · **dec** = decreas(e)(ing) · **inc** = increas(e)(ing) · **k** = knit · **kwise** = as if to knit
meas = measures · **M1L** = lift strand between sts from front to back and knit this strand through the back loop · **M1R** = lift strand between sts from the back and knit this strand through the front loop · **patt** = pattern · **pm** = place marker · **p** = purl
pwise = as if to purl · **rem** = remain(ing) · **rep** = repeat(s) · **rev St st** = reverse stockinette stitch · **rnd(s)** = round(s) · **RS** = right side · **sc** = single crochet · **skp** = slip 1 stitch as if to knit, knit 1 stitch, pass slipped stitch over knitted stitch · **sk2p** = slip 1 stitch as if to knit, knit 2 together, pass slipped stitch over knitted stitch · **s2kp** = slip 2 stitches as if to knit, k 1 stitch, pass slipped stitches over knitted stitch · **sl** = slip · **st(s)** = stitch(es) · **St st** = stockinette stitch · **tbl** = through the back loop · **tog** = together · **wyib** = with yarn in back of work · **wyif** = with yarn in front of work · **WS** = wrong side · **yo(s)** = yarn over(s)

Publisher's Info

Publisher: Lana Grossa GmbH, Gaimersheim, www.lanagrossa.com

Photographer: Julia Imhoff