



www.lanagrossa.com



PILLOW · BABY SOFT

Design 06 from Filati Infanti 14

PILLOW · BABY SOFT

Design 06 from Filati Infanti 14



www.lanagrossa.com

Size 22 x 22 cm

Materials: 50 g each of Lana Grossa **Baby Soft** (60% polyamide, 40% cotton; 150 m/50 g) in Light Blue (**col 8**) and White (**col 1**). Size 4 mm needles; size 3.5 mm crochet hook; 15 cm long zipper; one 20 x 20 cm pillow form.

St st: K on RS, p on WS.

Garter st: K every row.

Star motif: Work in St st according to chart. Numbers at right edge of chart indicate RS rows; on WS rows, work sts as they appear. Work rows 1 – 34 once. Work each block of color with separate ball of yarn or bobbin. Twist yarns around each other at each color change to prevent holes.

Gauge: 21 sts and 31 rows = 10 x 10 cm in St st on size 4 mm needles.

Front: With size 4 mm needles and Light Blue cast on 48 sts. Work in St st until piece meas 5.5 cm from cast-on, ending with a WS row. Next RS row: With Light Blue, k12; work row

1 of chart over next 24 sts; with Light Blue, k12. Work to end of chart, ending with chart row 34. With Light Blue, work in St st across all sts until piece meas 22 cm from cast-on. Bind off all sts.

Back section 1: With size 4 mm needles and Light Blue cast on 48 sts. Work in St st until piece meas 1.5 cm from cast-on, ending with a WS row. Work in garter st for 2 rows. Bind off all sts.

Back section 2: With size 4 mm needles and Light Blue cast on 48 sts. Beg with a WS row, work in St st until piece meas 20 cm from cast-on. Bind off all sts.

Finishing: Sew zipper between back section 1 and 2. With mattress st and from WS sew front and back tog (seam forms a ridge on RS). With size 3.5 mm hook and Light Blue work 1 rnd sc, then 1 rnd rev sc [work sc from left to right] around entire edge of pillow.

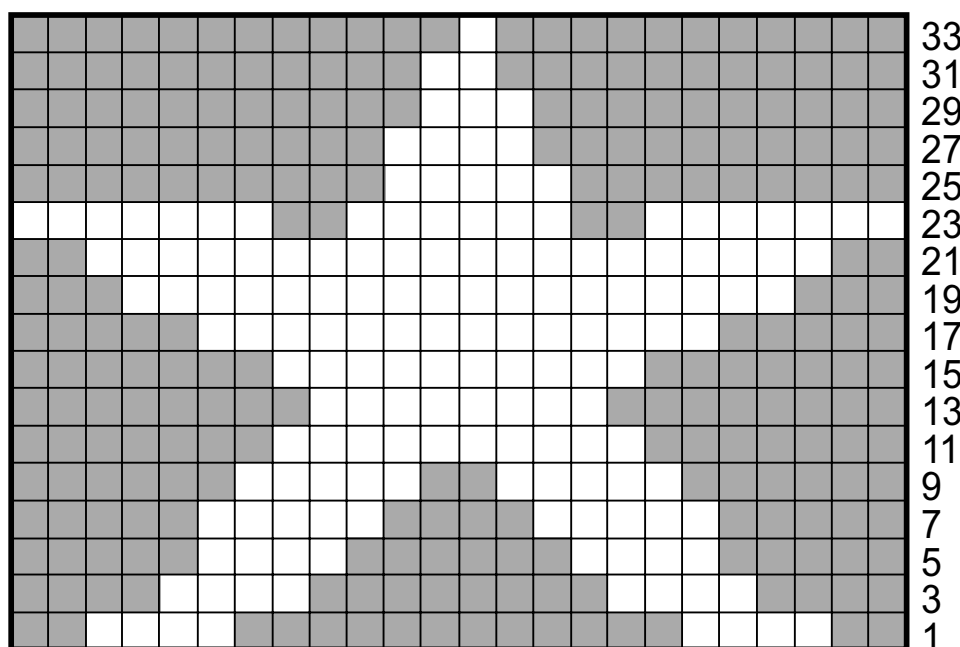


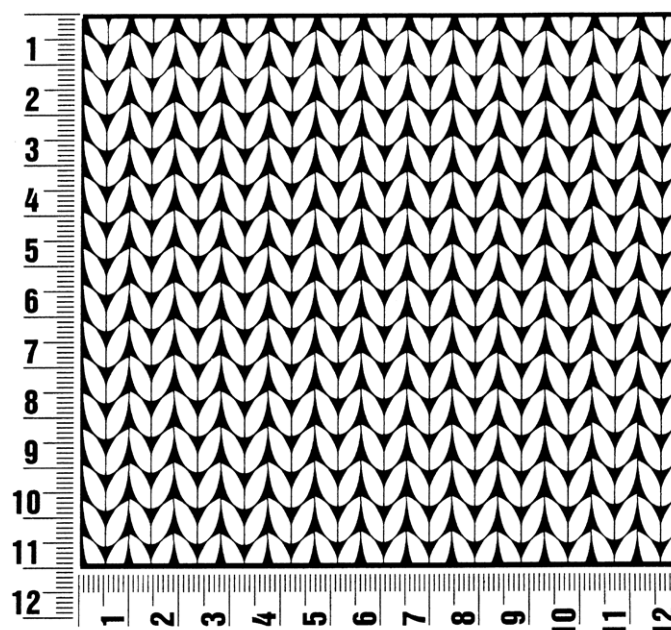
Chart key:

- = 1 st with White
- = 1 st with Light Blue

Gauge Swatch

Before you begin ...

...make a gauge swatch. Use the recommended needles, yarns and pattern stitch for your gauge swatch. It should measure approx. 12 cm x 12 cm. Cast-on and bind-off rows, as well as selvage stitches should not be included in the measurement. Pin your swatch and block it as you would the finished pieces of the garment. Count stitches and rows over 10 cm. If your gauge swatch is too small, switch to larger needles. If your gauge swatch is too big, switch to smaller needles.



Abbreviations

beg = begin(ning) · **ch** = chain · **cont** = continue · **dec** = decreas(e)(ing) · **inc** = increas(e)(ing) · **k** = knit · **kwise** = as if to knit
meas = measures · **M1L** = lift strand between sts from front to back and knit this strand through the back loop · **M1R** = lift strand between sts from the back and knit this strand through the front loop · **patt** = pattern · **pm** = place marker · **p** = purl
pwise = as if to purl · **rem** = remain(ing) · **rep** = repeat(s) · **rev St st** = reverse stockinette stitch · **rnd(s)** = round(s) · **RS** = right side · **sc** = single crochet · **skp** = slip 1 stitch as if to knit, knit 1 stitch, pass slipped stitch over knitted stitch · **sk2p** = slip 1 stitch as if to knit, knit 2 together, pass slipped stitch over knitted stitch · **s2kp** = slip 2 stitches as if to knit, k 1 stitch, pass slipped stitches over knitted stitch · **sl** = slip · **st(s)** = stitch(es) · **St st** = stockinette stitch · **tbl** = through the back loop · **tog** = together · **wyib** = with yarn in back of work · **wyif** = with yarn in front of work · **WS** = wrong side · **yo(s)** = yarn over(s)

Publisher's Info

Publisher: Lana Grossa GmbH, Gaimersheim, www.lanagrossa.com

Photographer: Julia Imhoff