



www.lanagrossa.com

OVERALL · BABY SOFT

Design 15 from Filati Infanti 14

OVERALL · BABY SOFT

Design 15 from Filati Infanti 14



www.lanagrossa.com

Size 50/56 (62/68, 74/80)

Instructions are given for first size. Figures in parenthesis refer to larger sizes. When only one figure is given, it applies to all sizes.

Materials: 50 (100, 100) g of Lana Grossa **Baby Soft** (60% polyamide, 40% cotton; 150 m/50 g) in Beige (col 21). Size 3.5 mm needles; one set size 3.5 mm double-pointed needles [dpns]; size 3.5 mm circular needle, 40 cm long; five 15 mm buttons.

Rib patt: K1, p1.

St st: K on RS, p on WS.

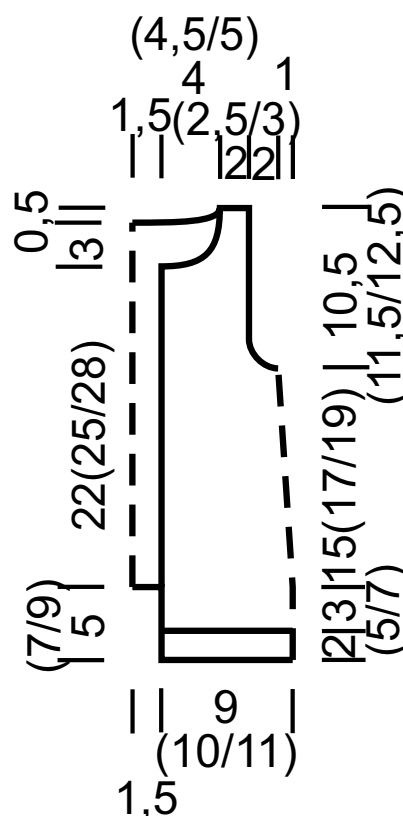
Gauge: 19 sts and 33 rows = 10 x 10 cm in St st on size 3.5 mm needles.

Right leg: With size 3.5 mm needles cast on 36 (40, 44) sts. Work in rib patt until piece meas 2 cm from cast-on, ending with a WS row. Work in St st until piece meas 5 (7, 9) cm from cast-on, ending with a WS row. Leave sts on needle and break yarn.

Left leg: With size 3.5 mm circular needle cast on 36 (40, 44) sts. Complete as given for right leg, leave sts on needle, do not break yarn.

Body: Next RS row: K18 (20, 22) sts across left leg, place first marker, k18 (20, 22) to end of left leg, k18 (20, 22) sts across right leg, place side marker, k18 (20, 22) to end of right leg, cast on 6 sts for gusset, k18 (20, 22) sts to first marker = beg of rnd marker. Join for working in rnds, work St st in rnds for 18 (20, 22) rnds. Next dec rnd: Skp, k to 2 sts before side marker, k2tog, slide marker, skp, k to 2 sts before end of rnd marker, k2tog = 4 sts decreased. Work 15 (17, 19) rnds even, rep dec rnd once more = 70 (78, 86) sts. Work even until piece meas 20 (24, 28) cm from leg cast-on. Divide for front and back: K to side marker and turn, p16 (18, 20) to center of front, leave rem sts on hold. Work in St st, back and forth in rows across 16 (18, 20) **right front** sts only as foll: K 1 RS row. Shape armhole: Bind off 2 sts at beg of next WS row, 1 st at beg of next 2 WS rows = 12 (14, 16) sts. Work even until piece meas 27 (32, 37) cm from leg cast-on, ending with a WS row. Shape neck: Bind off 4 (5, 6) sts at beg of next RS row, 2 sts at beg of next RS row, 1 st at beg of next 2 RS rows = 4 (5, 6) sts rem. Work even until piece meas 30.5 (35.5, 40.5) cm from leg cast-on. Bind off all sts. **Left front:** With WS facing rejoin yarn to 16 (18, 20) held left front sts. Complete as for right front, reversing shaping. **Back:** With WS facing rejoin yarn to 38 (42, 46) held back sts. Work 1 WS row. Shape armholes: Bind off 2 sts at beg of next 2 rows, 1 st at beg of next 4 rows = 30 (34, 38) sts. Work even until piece meas 30 (35, 40) cm from leg cast-on, ending with a WS row. Shape neck: Next RS row: Bind off center 22 (24, 26) sts. Working each side separately, work even until piece meas 30.5 (35.5, 40.5) cm from leg cast-on. Bind off rem 4 (5, 6) sts for each shoulder.

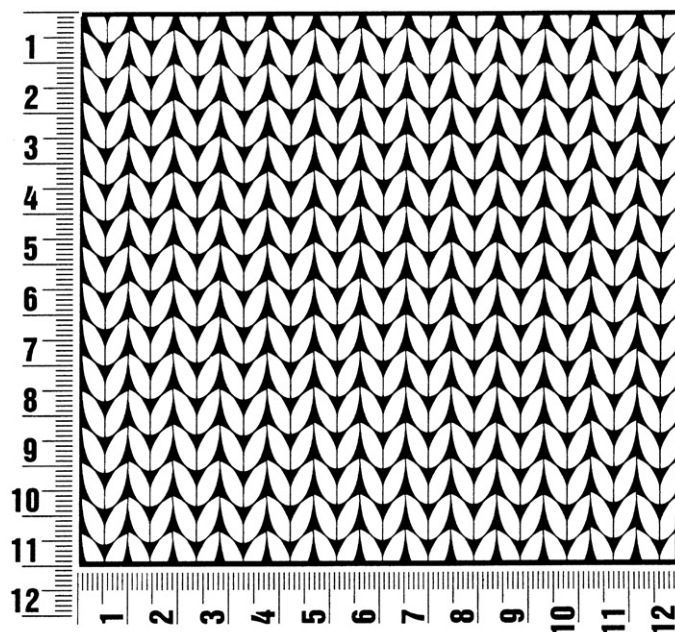
Finishing: Sew shoulder seams. With size 3.5 mm circular needle pick up and k 54 (58, 62) sts evenly along neck edge. Work in rib patt for 1 cm, then bind off all sts. Sew inseams. Buttonhole band: With size 3.5 mm circular needle pick up and k 51 (57, 63) sts evenly along left front edge. Work in rib patt for 1.5 cm, ending with a WS row. Next RS [buttonhole] row: Work in rib patt, work 5 buttonholes evenly spaced. For each buttonhole, k2tog, yo. Cont in rib patt until band meas 3 cm from pick-up row. Bind off all sts. Buttonband: With size 3.5 mm circular needle pick up and k 51 (57, 63) sts evenly along right front edge. Work in rib patt for 3 cm. Bind off all sts. With size 3.5 mm dpns pick up and k 44 (48, 52) sts evenly around armhole edge. Arrange sts evenly on 4 needles = 11 (12, 13) sts per needle. Join for working in rnds. Work rib patt in rnds for 1 cm. Bind off all sts. Sew on buttons.



Gauge Swatch

Before you begin ...

...make a gauge swatch. Use the recommended needles, yarns and pattern stitch for your gauge swatch. It should measure approx. 12 cm x 12 cm. Cast-on and bind-off rows, as well as selvage stitches should not be included in the measurement. Pin your swatch and block it as you would the finished pieces of the garment. Count stitches and rows over 10 cm. If your gauge swatch is too small, switch to larger needles. If your gauge swatch is too big, switch to smaller needles.



Abbreviations

beg = begin(ning) · **ch** = chain · **cont** = continue · **dec** = decreas(e)(ing) · **inc** = increas(e)(ing) · **k** = knit · **kwise** = as if to knit
meas = measures · **M1L** = lift strand between sts from front to back and knit this strand through the back loop · **M1R** = lift strand between sts from the back and knit this strand through the front loop · **patt** = pattern · **pm** = place marker · **p** = purl
pwise = as if to purl · **rem** = remain(ing) · **rep** = repeat(s) · **rev St st** = reverse stockinette stitch · **rnd(s)** = round(s) · **RS** = right side · **sc** = single crochet · **skp** = slip 1 stitch as if to knit, knit 1 stitch, pass slipped stitch over knitted stitch · **sk2p** = slip 1 stitch as if to knit, knit 2 together, pass slipped stitch over knitted stitch · **s2kp** = slip 2 stitches as if to knit, k 1 stitch, pass slipped stitches over knitted stitch · **sl** = slip · **st(s)** = stitch(es) · **St st** = stockinette stitch · **tbl** = through the back loop · **tog** = together · **wyib** = with yarn in back of work · **wyif** = with yarn in front of work · **WS** = wrong side · **yo(s)** = yarn over(s)

Publisher's Info

Publisher: Lana Grossa GmbH, Gaimersheim, www.lanagrossa.com

Photographer: Julia Imhoff