



[www.lanagrossa.com](http://www.lanagrossa.com)

# JACKET · BABY SOFT

Design 16 from Filati Infanti 14

# JACKET · BABY SOFT

## Design 16 from Filati Infanti 14



www.lanagrossa.com

**Size** 50/56 (62/68, 74/80)

Instructions are given for first size. Figures in parenthesis refer to larger sizes. When only one figure is given, it applies to all sizes.

**Materials:** 50 (100, 100) g of Lana Grossa **Baby Soft** (60% polyamide, 40% cotton; 150 m/50 g) in Beige (**col 21**) and 50 g in Ecrú (**col 2**). Size 3.5 mm needles; size 3.5 mm circular needle, 40 cm long; one 15 mm button.

**Rib patt:** K1, p1.

**St st:** K on RS, p on WS.

**Gauge:** 19 sts and 33 rows = 10 x 10 cm in St st on size 3.5 mm needles.

**Back:** With size 3.5 mm needles and Beige cast on 46 (50, 54) sts. Work in rib patt until piece meas 2 cm from cast-on, ending with a WS row. Work in St st and shape sides as foll: Dec 1 st at each end of 9 (11, 11)th row, then every foll 8th row twice (then every 8th row twice / then every 10th row once, then every 8th row once) = 40 (44, 48) sts. Work even until piece meas 18.5 (20.5 (22.5) cm from cast-on, ending with a WS row. Shape neck: Next RS row: Bind off center 20 (22, 24) sts. Working each side separately, work even for 0.5 cm. Bind off rem 10 (11, 12) sts for each shoulder.

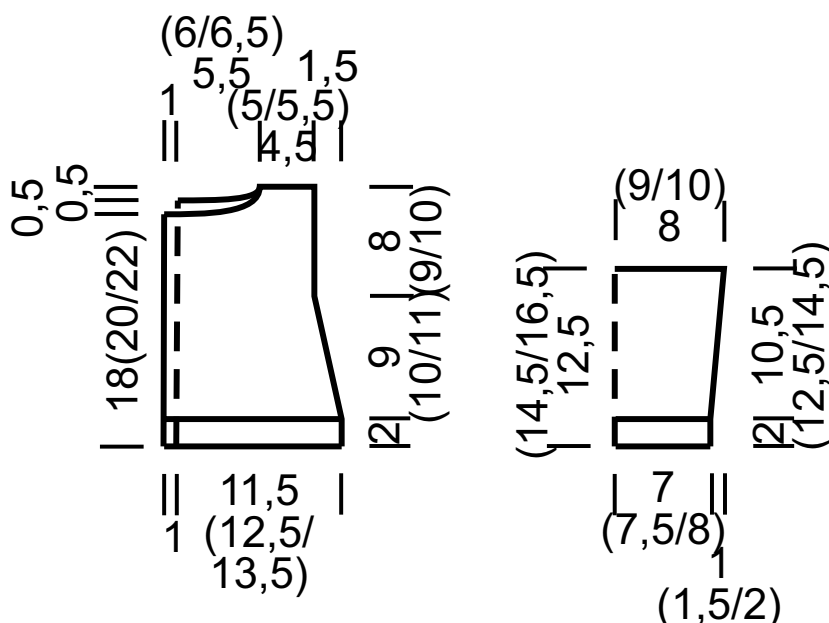
**Left front:** With size 3.5 mm needles and Ecrú cast on 26 (28, 30) sts. Next WS row: Selvage st, p1, \* k1, p1; rep from \*, end selvage st. Next RS row: Work sts as they appear. Cont

in rib patt as established until piece meas 2 cm from cast-on, ending with a WS row. Next RS row: Selvage st, work 20 (22, 24) sts in St st, [p1, k1] twice, selvage st. Cont in patt as established, work decreases for side shaping at right edge same as for back = 23 (25, 27) sts. Work even until piece meas 18 (20, 22) cm from cast-on, ending with a RS row. Shape neck: At beg of WS rows, bind off 10 (11, 12) sts once, 3 sts once. Work even until piece meas 19 (21, 23) cm from cast-on. Bind off rem 10 (11, 12) shoulder sts.

**Right front:** Work same as for left front, reversing all shaping and patt placement and when piece meas 17 (19, 20) cm from cast-on, work buttonhole at beg next RS row as foll: K1, [k2tog, yo] for buttonhole, patt to end.

**Sleeves:** With size 3.5 mm needles and Beige cast on 28 (30, 32) sts. Work in rib patt until piece meas 2 cm from cast-on, ending with a WS row. Break Beige, cont with Ecrú. Work in St st and shape sleeve as foll: Inc 1 st at each end of 13 (13, 11)th row, then every 12 (10, 10)th row 1 (2, 3) time(s) = 32 (36, 40) sts. Work even until piece meas 12.5 (14.5, 16.5) cm from cast-on. Bind off all sts.

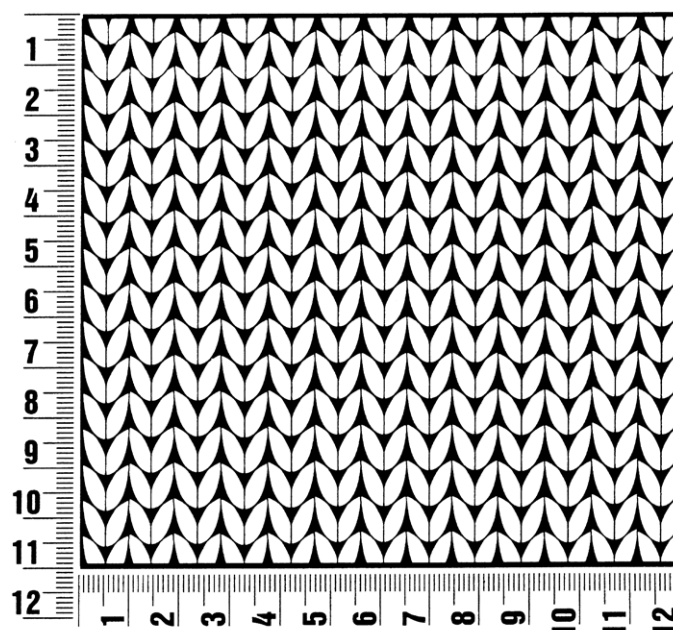
**Finishing:** Sew shoulder seams. **Collar:** With size 3.5 mm circular needle and Beige, beginning 4 sts in from right front edge and ending 4 sts in from left front edge, pick up and k 55 (59, 63) sts evenly along right front, back and left front neck edge. Work in rib patt until collar meas 4 cm from pick-up row. Bind off all sts in rib. Place markers 8 (9, 10) cm down from shoulders on fronts and back. Sew on sleeves between markers. Sew side and sleeve seams. Sew on button.



## Gauge Swatch

### Before you begin ...

...make a gauge swatch. Use the recommended needles, yarns and pattern stitch for your gauge swatch. It should measure approx. 12 cm x 12 cm. Cast-on and bind-off rows, as well as selvage stitches should not be included in the measurement. Pin your swatch and block it as you would the finished pieces of the garment. Count stitches and rows over 10 cm. If your gauge swatch is too small, switch to larger needles. If your gauge swatch is too big, switch to smaller needles.



## Abbreviations

**beg** = begin(ning) · **ch** = chain · **cont** = continue · **dec** = decreas(e)(ing) · **inc** = increas(e)(ing) · **k** = knit · **kwise** = as if to knit  
**meas** = measures · **M1L** = lift strand between sts from front to back and knit this strand through the back loop · **M1R** = lift strand between sts from the back and knit this strand through the front loop · **patt** = pattern · **pm** = place marker · **p** = purl  
**pwise** = as if to purl · **rem** = remain(ing) · **rep** = repeat(s) · **rev St st** = reverse stockinette stitch · **rnd(s)** = round(s) · **RS** = right side · **sc** = single crochet · **skp** = slip 1 stitch as if to knit, knit 1 stitch, pass slipped stitch over knitted stitch · **sk2p** = slip 1 stitch as if to knit, knit 2 together, pass slipped stitch over knitted stitch · **s2kp** = slip 2 stitches as if to knit, k 1 stitch, pass slipped stitches over knitted stitch · **sl** = slip · **st(s)** = stitch(es) · **St st** = stockinette stitch · **tbl** = through the back loop · **tog** = together · **wyib** = with yarn in back of work · **wyif** = with yarn in front of work · **WS** = wrong side · **yo(s)** = yarn over(s)

### Publisher's Info

**Publisher:** Lana Grossa GmbH, Gaimersheim, www.lanagrossa.com

**Photographer:** Julia Imhoff