



[www.lanagrossa.com](http://www.lanagrossa.com)



## **PULLOVER • ABOUT BERLIN SPARKLY**

Design 07 from Lookbook 06

Photo: © Nicolas Olonetzky c/o Bascha Kickl Fotografen, [www.bascha-kickl-photographers.de](http://www.bascha-kickl-photographers.de)

# PULLOVER • ABOUT BERLIN SPARKLY

## Design 07 from Lookbook 06



www.lanagrossa.com

**Size** 36 (38/40, 42/44)

Instructions are given for first size. Figures in parenthesis refer to larger sizes. When only one figure is given, it applies to all sizes.

**Materials:** 350 (400, 450) g of Lana Grossa **About Berlin Sparkly** (82% cotton, 18% polyester; 120 m/50 g) in Natural/Petrol/Dark Green/Salmon/Brown (**col 6**). Size 7 mm needles; size 5 mm crochet hook.

**Broken rib:** Multiple of 2 + 1 + 2 selvage sts. Work according to chart. Numbers at right edge of chart indicate RS rows, numbers at left edge of chart indicate WS rows. Work to patt rep, work 2-st patt rep between arrows throughout, work to end of chart. Rep rows 1 – 4.

**Drop st patt:** Multiple of 6 + 1 + 2 selvage sts. **Row 1 (RS):** Selvage st, \* yo twice, k1; rep from \*, end selvage st. **Row 2 (WS):** Selvage st, \* p1, dropping yos and pulling st up to elongate, wyif sl 5 sts to right needle, dropping yos and pulling sts up to elongate, sl 5 sts back to left needle, (yo twice, p5tog, yo twice) into same 5 sts tog; rep from \* to last 2 sts, p1, selvage st. **Row 3:** Selvage st, \* k1, k first yo, ktbl 2nd yo; rep from \* to last 2 sts, k1, selvage st. **Row 4:** Selvage st, knit to last st, selvage st. Work rows 1 – 4 once.

**Gauges:** On size 7 mm needles: 18.5 sts and 22 rows = 10 x 10 cm in broken rib; 18.5 sts and 4 rows = 10 x 4.5 cm in drop st patt.

**Back:** With size 7 mm needles cast on 77 (85, 93) sts. K 1 WS row. Work in broken rib until piece meas 27.5 cm from cast-on, ending with a WS row. Shape armholes: Bind off 3 sts at beg of next 2 rows, 2 sts at beg of next 2 rows, 1 st at beg of next 6 rows = 61 (69, 77) sts. Work even until piece meas 45.5 (47.5, 49.5) cm from cast-on, ending with a WS row. Shape neck: Next row (RS): Bind off center 37 sts. Working each side separately, work even for 1 cm. Bind off rem 12 (16, 20) sts for each shoulder.

**Front:** Work same as for back until piece meas 36 (38, 40) cm from cast-on, ending with a WS row. Divide for center slit: Next row (RS): Bind off center st. Working each side separately, work even for 3 cm. Shape neck: At each neck edge, bind off 9 sts once, 3 sts once, 2 sts once, 1 st 4 times. Bind off rem 12 (16, 20) sts for each shoulder.

**Left sleeve:** With size 7 mm needles cast on 43 (47, 51) sts. K 1 WS row. Work in broken rib until piece meas 19 cm from cast-on, ending with a WS row. Shape sleeve: Next inc row (RS): Work in broken rib, inc 1 st at each end of row = 45 (49, 53) sts. Rep inc row every 6th row 4 (4, 6) times, then every 4th row 2 (3, 2) times = 57 (63, 69) sts. Work increased sts into patt. Work even until piece meas 35 (37, 39) cm from cast-on, ending with a WS row. Work rows 1 – 4 of drop st patt. Cont in broken rib until piece meas 42.5 (44.5, 46.5) cm from cast-on, ending with a WS row. Shape sleeve cap: Bind off 3 sts at beg of next 2 rows, 2 sts at beg of next 2 rows, 1 st at beg of next 26 rows, 2 sts at beg of next 2 rows, 3 sts at beg of next 2 rows. Bind off rem 11 (17, 23) sts.

**Right sleeve:** Work same as for left sleeve, omitting drop st patt.

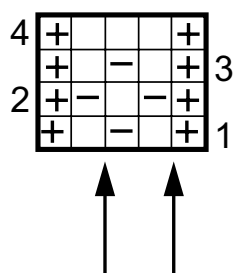
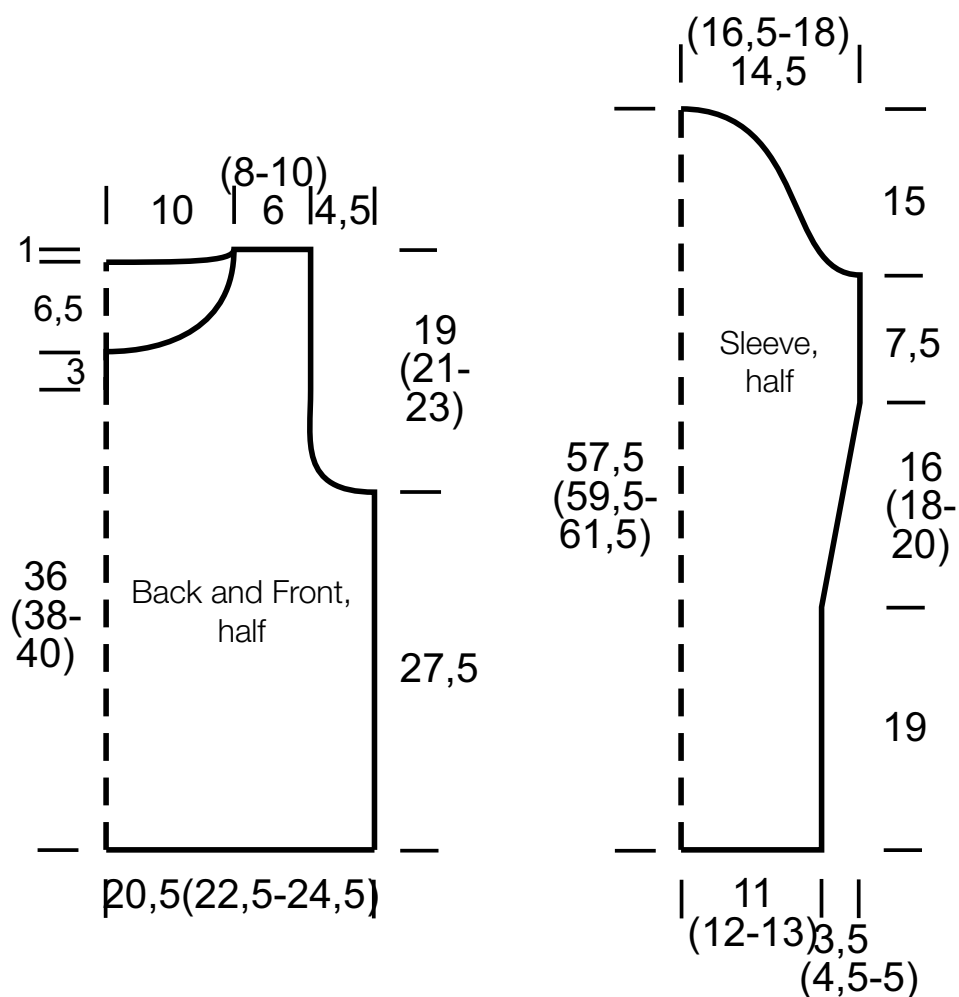
**Finishing:** Pin pieces to measurements and block. Sew shoulder seams. With size 5 mm hook work 1 rnd sc around neck edge including center slit. Sew in sleeves. Sew side and sleeve seams.

# PULLOVER • ABOUT BERLIN SPARKLY

Design 07 from Lookbook 06



www.lanagrossa.com



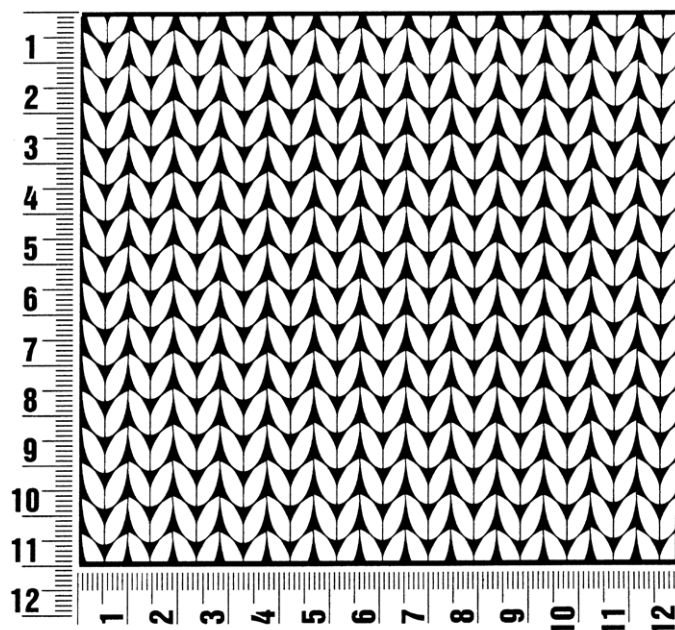
## Chart key:

- ⊕ = selvage st
- = k1
- ▣ = p1

## Gauge Swatch

### Before you begin ...

...make a gauge swatch. Use the recommended needles, yarns and pattern stitch for your gauge swatch. It should measure approx. 12 cm x 12 cm. Cast-on and bind-off rows, as well as selvage stitches should not be included in the measurement. Pin your swatch and block it as you would the finished pieces of the garment. Count stitches and rows over 10 cm. If your gauge swatch is too small, switch to larger needles. If your gauge swatch is too big, switch to smaller needles.



## Abbreviations

**beg** = begin(ning) · **ch** = chain · **cont** = continue · **dec** = decreas(e)(ing) · **inc** = increas(e)(ing) · **k** = knit · **kwise** = as if to knit  
**meas** = measures · **M1L** = lift strand between sts from front to back and knit this strand through the back loop · **M1R** = lift strand between sts from the back and knit this strand through the front loop · **patt** = pattern · **pm** = place marker · **p** = purl  
**pwise** = as if to purl · **rem** = remain(ing) · **rep** = repeat(s) · **rev St st** = reverse stockinette stitch · **rnd(s)** = round(s) · **RS** = right side · **sc** = single crochet · **skp** = slip 1 stitch as if to knit, knit 1 stitch, pass slipped stitch over knitted stitch · **sk2p** = slip 1 stitch as if to knit, knit 2 together, pass slipped stitch over knitted stitch · **s2kp** = slip 2 stitches as if to knit, k 1 stitch, pass slipped stitches over knitted stitch · **sl** = slip · **st(s)** = stitch(es) · **St st** = stockinette stitch · **tbl** = through the back loop · **tog** = together · **wyib** = with yarn in back of work · **wyif** = with yarn in front of work · **WS** = wrong side · **yo(s)** = yarn over(s)

### Publisher's Info

**Publisher:** Lana Grossa GmbH, Gaimersheim, [www.lanagrossa.com](http://www.lanagrossa.com)  
**Photographer:** Nicolas Olonetzky c/o Bascha Kicki Fotografen, [www.bascha-photographers.de](http://www.bascha-photographers.de)