



www.lanagrossa.com

© Lana Grossa GmbH - Photo: Nicolas Olonetzky c/o Bascha Kiki Fotografen, www.bascha-kiki-photographers.de

PULLOVER · ABOUT BERLIN SPARKLY

Design 03 from Filati Journal 57

PULLOVER .

ABOUT BERLIN SPARKLY

Design 03 from Filati Journal 57



www.lanagrossa.com

Size 36 – 40 (42/44)

Instructions are given for first size. Figure in parenthesis refers to larger size. When only one figure is given, it applies to both sizes.

Materials: 450 (500) g of Lana Grossa **About Berlin Sparkly** (82% cotton, 18% polyester; 120 m/50 g) in Taupe/Brown/Pink/Green (col 3). Size 6.5 and 7 mm needles.

Rib patt: K2, p2.

St st: K on RS, p on WS.

Diamond lace: Work according to charts. Numbers at right edge of charts indicate RS rows; on WS rows, p all sts and yos. Work to patt rep, work sts between arrows for patt rep, work to end of chart. Rep rows 1 – 36. Note: Make sure each yo is paired with a decrease. If there are not enough sts to offset a yo with a decrease or vice versa, work sts in St st instead.

Gauge: 18 sts and 24 rows = 10 x 10 cm in diamond lace on size 7 mm needles.

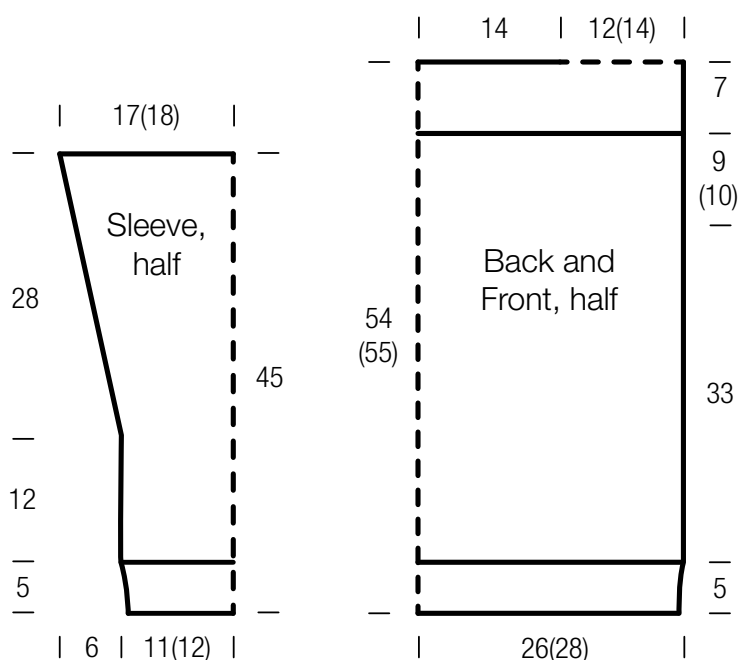
Back: With size 6.5 mm needles cast on 94 (102) sts. Next row (RS): Selvage st, k1, * p2, k2; rep from * to last 4 sts, p2, k1, selvage st. Cont in rib patt as established until piece meas 5 cm from cast-on, inc 1 st on last WS row = 95 (103) sts. Change to size 7 mm needles. Work diamond lace according to chart A until piece meas 38 cm from cast-on. Place marker

at each edge to indicate beg of armholes. Cont in patt until piece meas 9 (10) cm from armhole markers, dec 1 st on last WS row = 94 (102) sts. Work in rib patt as given at beg of piece for 7 cm, ending with a WS row. Next row (RS): Patt over 22 (26) sts and place on holder, bind off 50 sts in patt, patt over rem 22 (26) sts and place on holder.

Front: Work same as for back.

Sleeves: With size 6.5 mm needles cast on 42 (46) sts. Next row (RS): Selvage st, k1, * p2, k2; rep from * to last 4 sts, p2, k1, selvage st. Cont in rib patt as established until piece meas 5 cm from cast-on, dec 1 st on last WS row = 41 (45) sts. Change to size 7 mm needles. Work diamond lace according to chart B until piece meas 17 cm from cast-on, ending with a WS row. Shape sleeve: Inc row (RS): Work in patt, inc 1 st at each end of row = 43 (47) sts. Cont in patt, rep inc row every 6th row 10 times = 63 (67) sts. Work increased sts in St st. Work even in patt until piece meas 45 cm from cast-on. Bind off all sts.

Finishing: Pin pieces to measurements and block. Join shoulders with 3-needle bind-off. Sew on sleeves between markers. Sew side and sleeve seams.



PULLOVER .

ABOUT BERLIN SPARKLY

Design 03 from Filati Journal 57



www.lanagrossa.com

Charts A and B

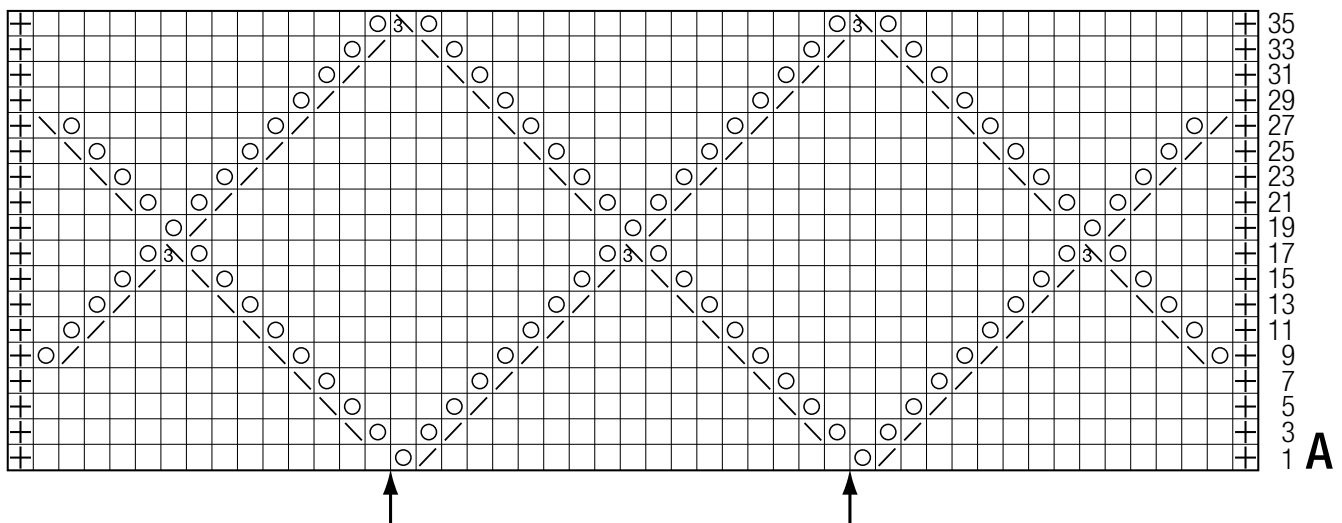
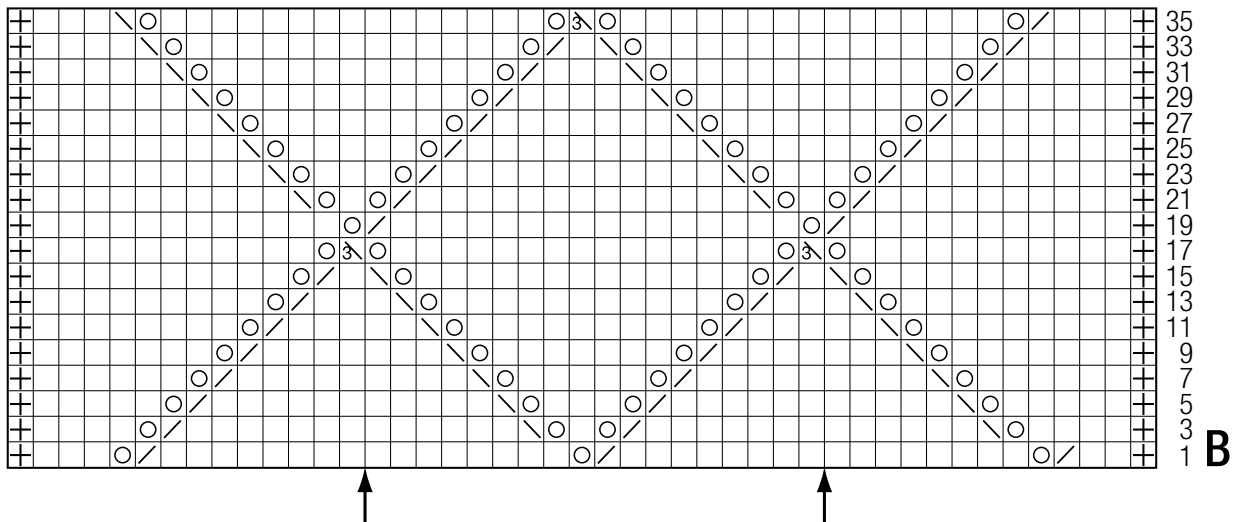


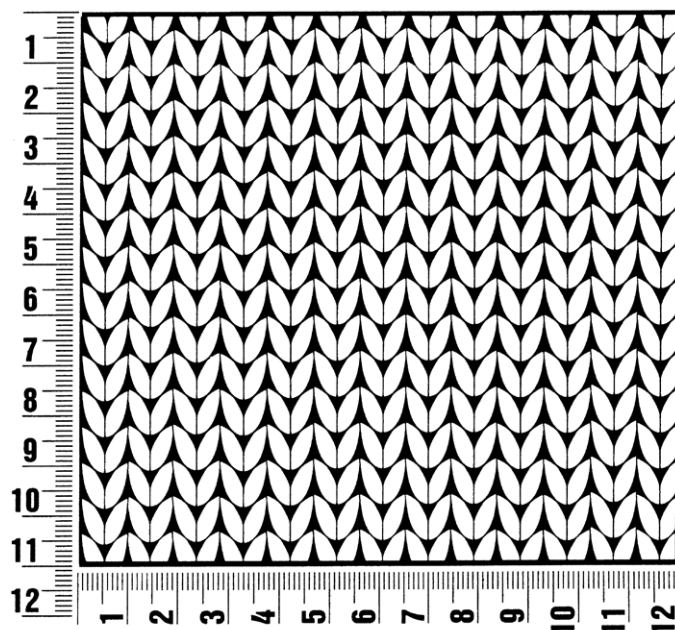
Chart key:

- ⊕ = selvage st
- = k1
- = yo
- ↘ = k2tog
- ↙ = skp: sl 1 kwise, k1, pass slipped st over knitted st
- ⊗ = sk2p: sl 1 kwise, k2tog, pass slipped st over knitted st

Gauge Swatch

Before you begin ...

...make a gauge swatch. Use the recommended needles, yarns and pattern stitch for your gauge swatch. It should measure approx. 12 cm x 12 cm. Cast-on and bind-off rows, as well as selvage stitches should not be included in the measurement. Pin your swatch and block it as you would the finished pieces of the garment. Count stitches and rows over 10 cm. If your gauge swatch is too small, switch to larger needles. If your gauge swatch is too big, switch to smaller needles.



Abbreviations

beg = begin(ning) · **ch** = chain · **cont** = continue · **dec** = decreas(e)(ing) · **inc** = increas(e)(ing) · **k** = knit · **kwise** = as if to knit
meas = measures · **M1L** = lift strand between sts from front to back and knit this strand through the back loop · **M1R** = lift strand between sts from the back and knit this strand through the front loop · **patt** = pattern · **pm** = place marker · **p** = purl
pwise = as if to purl · **rem** = remain(ing) · **rep** = repeat(s) · **rev St st** = reverse stockinette stitch · **rnd(s)** = round(s) · **RS** = right side · **sc** = single crochet · **skp** = slip 1 stitch as if to knit, knit 1 stitch, pass slipped stitch over knitted stitch · **sk2p** = slip 1 stitch as if to knit, knit 2 together, pass slipped stitch over knitted stitch · **s2kp** = slip 2 stitches as if to knit, k 1 stitch, pass slipped stitches over knitted stitch · **sl** = slip · **st(s)** = stitch(es) · **St st** = stockinette stitch · **tbl** = through the back loop · **tog** = together · **wyib** = with yarn in back of work · **wyif** = with yarn in front of work · **WS** = wrong side · **yo(s)** = yarn over(s)

Publisher's Info

Publisher: Lana Grossa GmbH, Gaimersheim, www.lanagrossa.com
Photographer: Nicolas Olonetzky c/o Bascha Kicki Fotografen, www.bascha-photographers.de