



www.lanagrossa.com

PULLOVER · STROMBOLI

Design 06 from Filati Journal 57

© Lana Grossa GmbH - Photo: Nicolas Olbnetzky c/o Bascha Kiki Fotografen, www.bascha-kiki-photographers.de

PULLOVER · STROMBOLI

Design 06 from Filati Journal 57



www.lanagrossa.com

Size 36/38 (40/42)

Instructions are given for first size. Figure in parenthesis refers to larger size. When only one figure is given, it applies to both sizes.

Materials: 450 (500) g of Lana Grossa **Stromboli** (60% cotton, 15% viscose, 15% polyamide, 10% silk; 150 m/50 g in Green/Beige **(col 106)**). Size 4.5 mm needles; size 3.5 mm crochet hook.

Rib patt: K2, p2.

Arch lace: Work according to chart. Numbers at right edge of chart indicate RS rows; on WS rows, p all sts and yos. Work to patt rep, work 8 sts between arrows for patt rep, work to end of chart. Rep rows 1 – 6.

Gauges: On size 4.5 mm needles: 21.5 sts and 31.5 rows = 10 x 10 cm in arch lace; 23 sts and 35 rows = 10 x 10 cm in rib patt, measured slightly stretched.

Back: With size 4.5 mm needles cast on 107 (115) sts. P 1 WS row. Work arch lace according to chart for 121 rows, inc

1 st on last WS row = 108 (116) sts. Piece meas approx. 38 cm from cast-on. Place marker at each edge to indicate beg of armholes. Next row (RS): Selvage st, k2, * p2, k2; rep from *, end selvage st. Cont in rib patt as established until piece meas 55 (56) cm from cast-on, ending with a WS row. Next row (RS): Patt over 28 (30) sts and place sts on holder, loosely bind off next 52 sts in rib, patt over rem 28 (30) sts and place sts on holder.

Front: Work same as for back.

Sleeves: With size 4.5 mm needles cast on 75 (83) sts. P 1 WS row. Work arch lace according to chart for 109 rows, inc 1 st on last WS row = 76 (84) sts. Piece meas approx. 34.5 cm from cast-on. Next row (RS): Selvage st, k2, * p2, k2; rep from *, end selvage st. Cont in rib patt as established until piece meas 50.5 cm from cast-on. Loosely bind off all sts in rib.

Finishing: Pin pieces to measurements and block. Graft shoulder sts with Kitchener st. Sew on sleeves between markers. Sew side and sleeve seams. **Neck trim:** With size 3.5 mm crochet hook work 1 rnd sl st around neck edge.

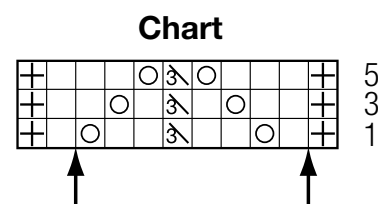
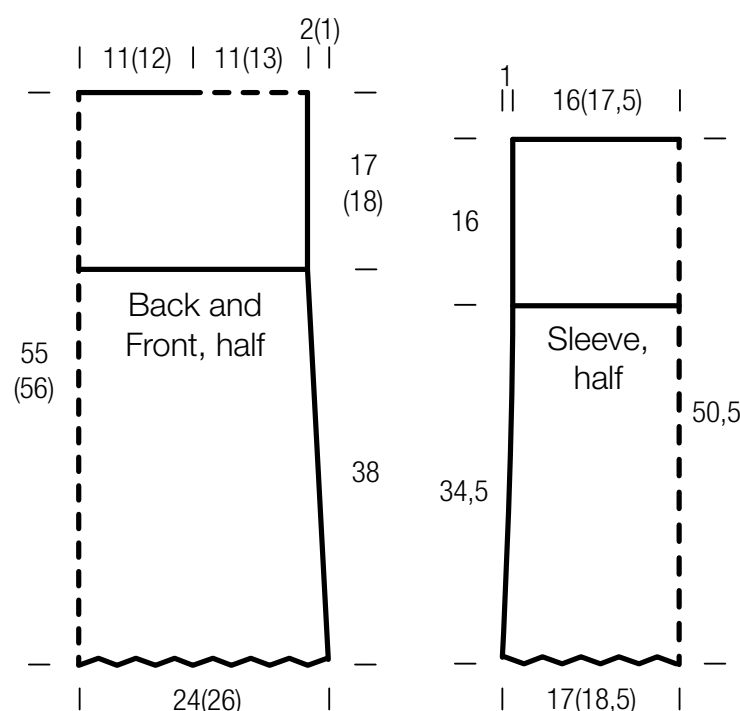


Chart key:

- ⊕ = selvage st
- = k1
- = yo
- ⌢ = sk2p: sl 1 kwise, k2tog, pass slipped st over knitted st

Gauge Swatch

Before you begin ...

...make a gauge swatch. Use the recommended needles, yarns and pattern stitch for your gauge swatch. It should measure approx. 12 cm x 12 cm. Cast-on and bind-off rows, as well as selvage stitches should not be included in the measurement. Pin your swatch and block it as you would the finished pieces of the garment. Count stitches and rows over 10 cm. If your gauge swatch is too small, switch to larger needles. If your gauge swatch is too big, switch to smaller needles.



Abbreviations

beg = begin(ning) · **ch** = chain · **cont** = continue · **dec** = decreas(e)(ing) · **inc** = increas(e)(ing) · **k** = knit · **kwise** = as if to knit
meas = measures · **M1L** = lift strand between sts from front to back and knit this strand through the back loop · **M1R** = lift strand between sts from the back and knit this strand through the front loop · **patt** = pattern · **pm** = place marker · **p** = purl
pwise = as if to purl · **rem** = remain(ing) · **rep** = repeat(s) · **rev St st** = reverse stockinette stitch · **rnd(s)** = round(s) · **RS** = right side · **sc** = single crochet · **skp** = slip 1 stitch as if to knit, knit 1 stitch, pass slipped stitch over knitted stitch · **sk2p** = slip 1 stitch as if to knit, knit 2 together, pass slipped stitch over knitted stitch · **s2kp** = slip 2 stitches as if to knit, k 1 stitch, pass slipped stitches over knitted stitch · **sl** = slip · **st(s)** = stitch(es) · **St st** = stockinette stitch · **tbl** = through the back loop · **tog** = together · **wyib** = with yarn in back of work · **wyif** = with yarn in front of work · **WS** = wrong side · **yo(s)** = yarn over(s)

Publisher's Info

Publisher: Lana Grossa GmbH, Gaimersheim, www.lanagrossa.com
Photographer: Nicolas Olonetzky c/o Bascha Kicki Fotografen, www.bascha-photographers.de