



www.lanagrossa.com

PULLOVER · STROMBOLI & ECOPUNO

Design 07 from Filati Journal 57

PULLOVER ·

STROMBOLI & ECOPUNO

Design 07 from Filati Journal 57



www.lanagrossa.com

Size 36/38 (40/42, 44)

Instructions are given for first size. Figures in parenthesis refer to larger sizes. When only one figure is given, it applies to all sizes.

Materials: 350 (400, 450) g of Lana Grossa **Stromboli** (60% cotton, 15% viscose, 15% polyamide, 10% silk; 150 m/50 g in Ecru (col 101) and 200 (250, 300) g of Lana Grossa **Ecopuno** (72% cotton, 17% pure wool, 11% alpaca; 215 m/50 g) in Greige (col 18). Size 3.5 and 4.5 mm needles; size 3.5 mm circular needle, 50 cm long.

Note: Work with 1 strand of each yarn held tog throughout.

Selvage sts: On every row: Sl first st kwise, k last st. Maintain selvage sts throughout.

St st: K on RS, p on WS.

Lace patt: Work according to chart. Numbers at right edge of chart indicate RS rows; on WS rows, work sts as they appear, p all single yos, work double yos according to chart key. Work to patt rep, work 6 sts between arrows for patt rep, work to end of chart. Rep rows 1 – 8.

Gauge: 18 sts and 25 rows = 10 x 10 cm in lace patt with size 4.5 mm needles and 1 strand of each yarn held tog.

Back: With size 3.5 mm needles and 1 strand of each yarn held tog, cast on 92 (98, 104) sts. Beg and end with a WS row, work in St st for 3 rows and piece meas approx. 1 cm from cast-on. Change to size 4.5 mm needles. Work in lace

patt for 30 cm, ending with a WS row. Shape armholes: Bind off 2 sts at beg of next 2 rows, 1 st at beg of next 14 rows = 74 (80, 86) sts. Cont in patt until armhole meas 18 (19.5, 21) cm, ending with a WS row. Shape shoulders: At each shoulder edge, bind off 4 (4, 5) sts once, then 4 sts once, 3 sts 3 times (then 4 sts 4 times / then 5 sts twice, 4 sts twice). Bind off rem 40 sts.

Front: Work same as for back until armhole meas 17 (18.5, 20) cm, ending with a WS row. Shape neck: Next row (RS): Bind off center 20 sts. Working each side separately, bind off 4 sts at each neck edge once, 2 sts twice, 1 st twice and when same length as back to shoulders, shape shoulders same as for back. No sts rem.

Sleeves: With size 3.5 mm needles and 1 strand of each yarn held tog, cast on 56 (62, 68) sts. Beg and end with a WS row, work in St st for 3 rows and piece meas approx. 1 cm from cast-on. Change to size 4.5 mm needles. Work in lace patt for 28 cm, ending with a WS row. Shape sleeve cap: Bind off 2 sts at beg of next 2 rows, 1 st at beg of next 8 rows, [work 2 rows even, bind off 1 st at beg of next 2 rows] twice, then bind off 1 st at beg of next 10 rows, 2 sts at beg of next 6 rows. Bind off rem 18 (24, 30) sts.

Finishing: Pin pieces to measurements and block. Sew shoulder seams. **Neck edging:** With size 3.5 mm circular needle and 1 strand of each yarn held tog, pick up and k 103 sts evenly around neck edge. Join for working in rnds. K 3 rnds. Loosely bind off all sts. Sew in sleeves. Sew side and sleeve seams.

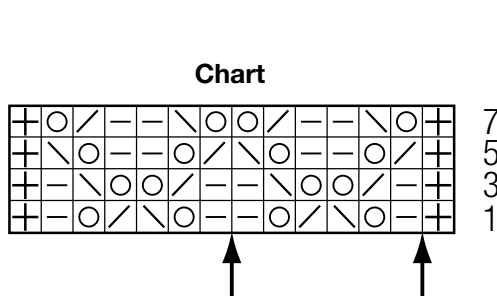


Chart key:

⊕ = selvage st

— = k1

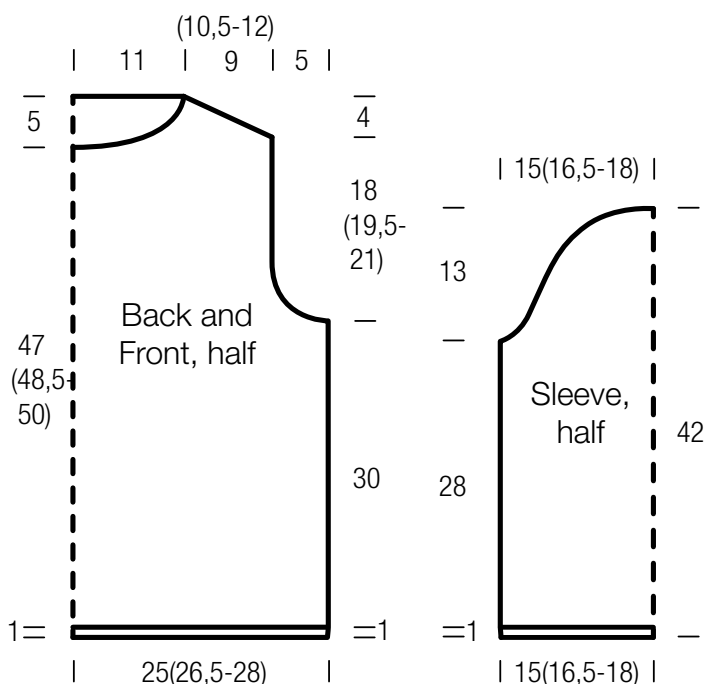
○ = yo

⧻ = k2tog

⧻ = skp: sl 1 kwise, k1, pass slipped st over knitted st

⊖⊖

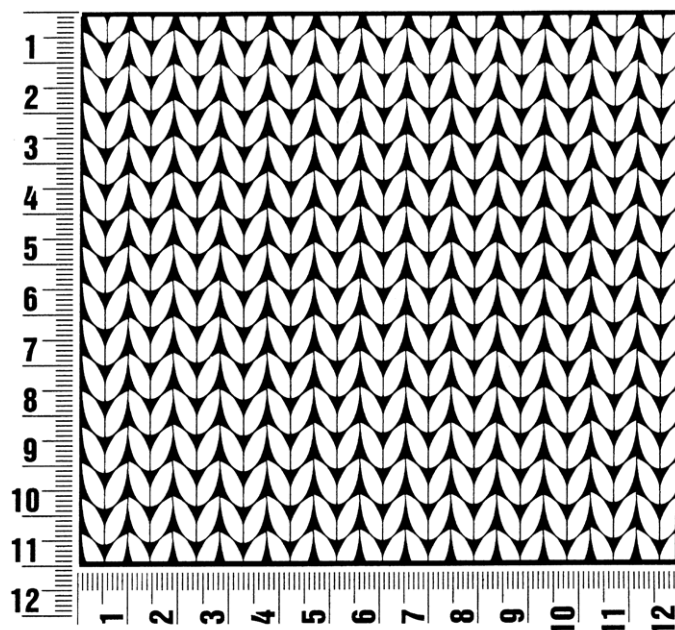
= yo twice; on foll WS row, p1 in first yo, k1 in 2nd yo



Gauge Swatch

Before you begin ...

...make a gauge swatch. Use the recommended needles, yarns and pattern stitch for your gauge swatch. It should measure approx. 12 cm x 12 cm. Cast-on and bind-off rows, as well as selvage stitches should not be included in the measurement. Pin your swatch and block it as you would the finished pieces of the garment. Count stitches and rows over 10 cm. If your gauge swatch is too small, switch to larger needles. If your gauge swatch is too big, switch to smaller needles.



Abbreviations

beg = begin(ning) · **ch** = chain · **cont** = continue · **dec** = decreas(e)(ing) · **inc** = increas(e)(ing) · **k** = knit · **kwise** = as if to knit
meas = measures · **M1L** = lift strand between sts from front to back and knit this strand through the back loop · **M1R** = lift strand between sts from the back and knit this strand through the front loop · **patt** = pattern · **pm** = place marker · **p** = purl
pwise = as if to purl · **rem** = remain(ing) · **rep** = repeat(s) · **rev St st** = reverse stockinette stitch · **rnd(s)** = round(s) · **RS** = right side · **sc** = single crochet · **skp** = slip 1 stitch as if to knit, knit 1 stitch, pass slipped stitch over knitted stitch · **sk2p** = slip 1 stitch as if to knit, knit 2 together, pass slipped stitch over knitted stitch · **s2kp** = slip 2 stitches as if to knit, k 1 stitch, pass slipped stitches over knitted stitch · **sl** = slip · **st(s)** = stitch(es) · **St st** = stockinette stitch · **tbl** = through the back loop · **tog** = together · **wyib** = with yarn in back of work · **wyif** = with yarn in front of work · **WS** = wrong side · **yo(s)** = yarn over(s)

Publisher's Info

Publisher: Lana Grossa GmbH, Gaimersheim, www.lanagrossa.com
Photographer: Nicolas Olonetzky c/o Bascha Kicki Fotografen, www.bascha-photographers.de