



[www.lanagrossa.com](http://www.lanagrossa.com)

© Lana Grossa GmbH - Photo: Nicolas Olmetzky c/o Bascha Kiki Fotografen, [www.bascha-photographers.de](http://www.bascha-photographers.de)

## **PULLOVER · ABOUT BERLIN CHILLY**

Design 22 from Filati Journal 57



# PULLOVER • ABOUT BERLIN CHILLY



## Design 22 from Filati Journal 57

www.lanagrossa.com

**Size** 36/38 (40/42)

Instructions are given for first size. Figure in parenthesis refers to larger size. When only one figure is given, it applies to both sizes.

**Materials:** 300 (350) g of Lana Grossa **About Berlin Chilly** (100% linen; 95 m/50 g) in Pink (**col 5**). Size 4.5 and 5.5 mm needles; size 5.5 mm circular needle, 80 cm long; cable needle [cn]; size 4.5 mm crochet hook.

**Slip garter selvage:** On every row: Sl first st kwise, k last st.

**Garter st:** K every row.

**St st:** K on RS, p on WS.

**Openwork patt:** Work according to chart. Numbers at right edge of chart indicate RS rows, numbers at left edge of chart indicate WS rows. Work to patt rep, work 8 sts between arrows for patt rep, work to end of chart. Work rows 1 – 10 once, then rep rows 3 – 10.

**Gauges:** 16 sts and 30 rows = 10 x 10 cm in St st on size 4.5 mm needles; 16 sts and 20 rows = 10 x 10 cm in openwork patt on size 5.5 mm needles.

**Back:** With size 4.5 mm needles cast on 74 (82) sts. Beg and end with a WS row, work in garter st for 3 rows. Work in St st until piece meas 7 cm from cast-on, ending with a WS row. Change to size 5.5 mm needles. Work in openwork patt according to chart until piece meas 21 (23) cm from cast-on, ending with a WS row. Shape sleeves: Cont in patt, inc 1 st at each end of next 3 RS rows = 80 (88) sts, then cast on 2 sts at beg of next 2 rows, 4 sts at beg of next 2 rows, 5 sts at beg of next 2 rows, 6 sts at beg of next 2 rows = 114 (122) sts. Work increased sts into patt. Change to circular needle as st count increases. Cont in patt until piece meas 45 (47) cm from cast-on, ending with a WS row. Divide for center slit: Patt over 57 (61) sts and turn, leaving rem sts on hold. **Right back:** Next row (WS): Cast on 1 selvage st, patt to end = 58 (62) sts. Cont in patt until piece meas 6 cm from divide. Bind off all sts. **Left back:** With RS facing, rejoin yarn to 57 (61) held sts. Complete as for right back.

**Front:** Work same as for back until piece meas 30 (32) cm from cast-on, ending with a WS row. Divide for center slit: Patt over 57 (61) sts and turn, leaving rem sts on hold. **Left front:** Next row (WS): Cast on 1 selvage st, patt to end = 58 (62) sts. Cont in patt until piece meas 21 cm from divide. Bind off all sts. **Right front:** With RS facing, rejoin yarn to 57 (61) held sts. Complete as for left front.

**Finishing:** Pin pieces to measurements and block. Sew shoulder/overarm seams. Sew side and sleeve seams. **Neck and sleeve edging:** With size 4.5 mm crochet hook, work 1 rnd sl st around neck edge and around each sleeve edge.

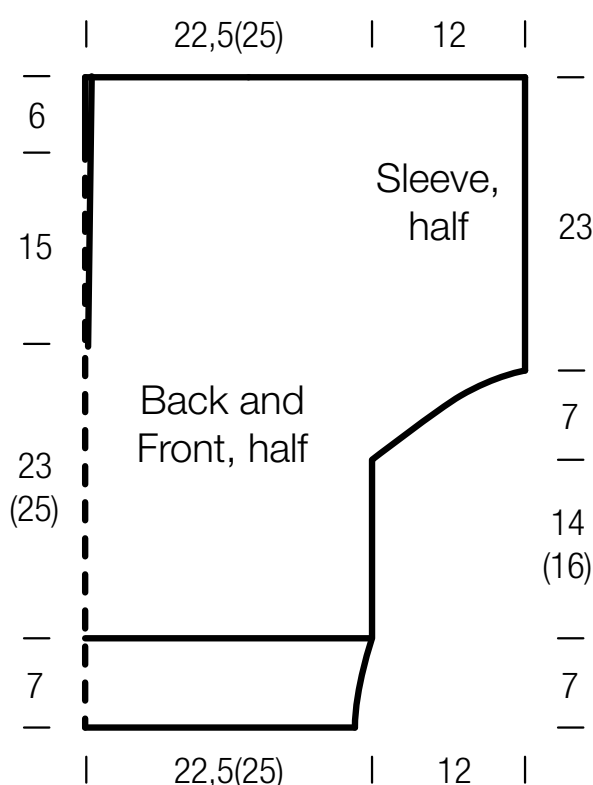
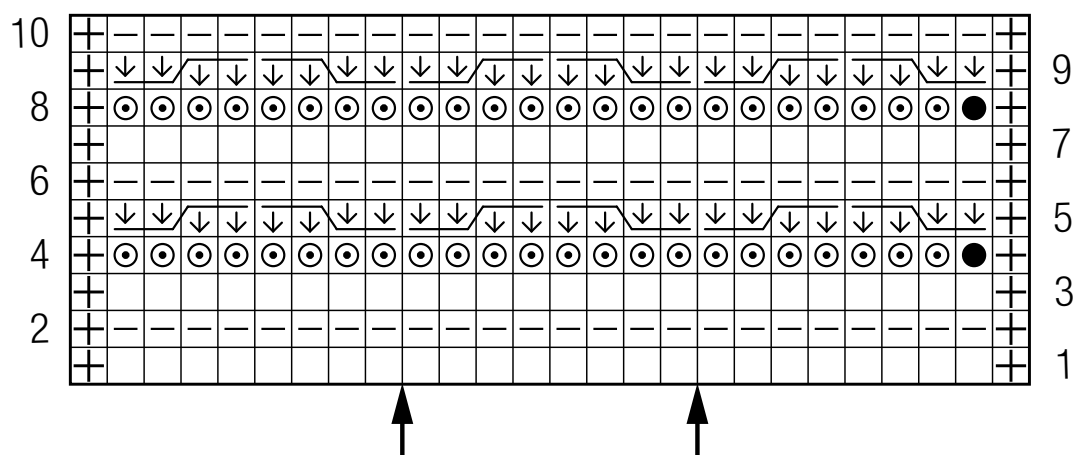
# PULLOVER · ABOUT BERLIN CHILLY

Design 22 from Filati Journal 57



www.lanagrossa.com

## Chart



### Chart key:

⊕ = slip garter selvage

□ = k1

▢ = p1

⊙ = yo, p1

● = yo, p1, yo

↓ ↓ ↓ ↓

= sl 2 sts to cn and hold in back of work, dropping yos and pulling sts up to elongate, k2, dropping yos and pulling sts up to elongate, then k2 from cn

↓ ↓ ↓ ↓

= sl 2 sts to cn and hold in front of work, dropping yos and pulling sts up to elongate, k2, dropping yos and pulling sts up to elongate, then k2 from cn

## Gauge Swatch

### Before you begin ...

...make a gauge swatch. Use the recommended needles, yarns and pattern stitch for your gauge swatch. It should measure approx. 12 cm x 12 cm. Cast-on and bind-off rows, as well as selvage stitches should not be included in the measurement. Pin your swatch and block it as you would the finished pieces of the garment. Count stitches and rows over 10 cm. If your gauge swatch is too small, switch to larger needles. If your gauge swatch is too big, switch to smaller needles.



## Abbreviations

**beg** = begin(ning) · **ch** = chain · **cont** = continue · **dec** = decreas(e)(ing) · **inc** = increas(e)(ing) · **k** = knit · **kwise** = as if to knit  
**meas** = measures · **M1L** = lift strand between sts from front to back and knit this strand through the back loop · **M1R** = lift strand between sts from the back and knit this strand through the front loop · **patt** = pattern · **pm** = place marker · **p** = purl  
**pwise** = as if to purl · **rem** = remain(ing) · **rep** = repeat(s) · **rev St st** = reverse stockinette stitch · **rnd(s)** = round(s) · **RS** = right side · **sc** = single crochet · **skp** = slip 1 stitch as if to knit, knit 1 stitch, pass slipped stitch over knitted stitch · **sk2p** = slip 1 stitch as if to knit, knit 2 together, pass slipped stitch over knitted stitch · **s2kp** = slip 2 stitches as if to knit, k 1 stitch, pass slipped stitches over knitted stitch · **sl** = slip · **st(s)** = stitch(es) · **St st** = stockinette stitch · **tbl** = through the back loop · **tog** = together · **wyib** = with yarn in back of work · **wyif** = with yarn in front of work · **WS** = wrong side · **yo(s)** = yarn over(s)

### Publisher's Info

**Publisher:** Lana Grossa GmbH, Gaimersheim, [www.lanagrossa.com](http://www.lanagrossa.com)  
**Photographer:** Nicolas Olonetzky c/o Bascha Kicki Fotografen, [www.bascha-photographers.de](http://www.bascha-photographers.de)