

FILATI NO. 57

FILATI

Design 26

JACKET



## JACKET

**Size** 36/38 (40/42)

Instructions are given for first size. Figure in parenthesis refers to larger size. When only one figure is given, it applies to both sizes.

**Materials:** 450 (500) g of Lana Grossa **Fourseason** (45% superfine Merino wool, 40% organic cotton, 15% recycled cashmere; 105 m/50 g) in Jeans **(col 3)**. Size 3 and 5 mm needles; size 5 mm circular needle, 80 cm long; one 28 mm mother-of-pearl button [by Union Knopf, item 452665, col 60].

**2 selvage stitches:** At beg of RS rows, k1, sl 1 pwise wyib, pulling yarn tight; at end of RS rows, work to last 2 sts, sl 1 pwise wyib, pulling yarn tight, k1. At beg of WS rows, sl 1 pwise wyif, pulling yarn tight, p1; at end of WS rows, work to last 2 sts, p1, sl 1 pwise wyif, pulling yarn tight.

**Slip stitch selvage:** On every row: K first st, sl last st pwise wyif.

**Mesh stitch:** Work according to chart A. Number at right edge of chart indicates RS row, number at left edge of chart indicates WS row. Work to patt rep, work 2 sts between arrows for patt rep, work to end of chart. Rep rows 1 and 2.

**Decrease chart B:** Letters at right edge of chart indicate RS rows, letters at left edge of chart indicate WS rows. Sts are decreased at beg and end of rows c and e.

**Increase chart C:** Numbers at right edge of chart indicate RS rows, numbers at left edge of chart indicate WS rows. Sts are increased at end of rows 4 and 8.

**Gauge:** 13 sts and 30 rows = 10 x 10 cm in mesh st on size 5 mm needles.

**Note:** See arrows on schematic for direction of work.

**Top portion of back:** Worked side to side. With size 5 mm needles cast on 18 sts for right side seam. Work mesh st according to chart A for 2 rows. Shape right armhole: Cont in mesh st, cast on 2 sts at beg of next 4 RS rows, 20 (22) sts at beg of next RS row = 46 (48) sts. Work increased sts into patt. Work even for 14 (16) cm to end of shoulder, ending with a WS row. Shape neck: Bind off 2 sts at beg of next 2 RS rows = 42 (44) sts. Work even until piece meas 8 cm from beg of neck shaping and center of back has been reached. Work left half of back same as right half, reversing all shaping, that is: cast on sts to shape left side of neck and bind off sts to shape left armhole. Bind off rem 18 sts for left side seam.

**Bottom portion of back:** Worked from the top down. With size 5 mm circular needle and RS facing, pick up and k 68 (72) sts evenly along bottom edge of top portion. Pick up back loop of slip st selvage only. Beg with a WS row, work mesh st according to chart A for 15 cm, ending with a WS row.

**Shape sides:** Work rows a – f of dec chart B once, then work rows c – f once more = 60 (64) sts. Bind off all sts.

**Top portion of left front:** Worked side to side. With size 5 mm needles cast on 18 sts for left side seam. Work mesh st according to chart A, shape armhole at right edge same as back right armhole = 46 (48) sts. Work even for 14 (16) cm to end of shoulder, ending with a WS row. Shape neck: Bind off 14 (16) sts at beg of next RS row, 4 sts at beg of next 8 RS rows. No sts rem.

**Bottom portion of left front:** Worked from the top down. With size 5 mm circular needle and RS facing, pick up and k 32 (34) sts evenly along bottom edge of top portion. Pick up back loop of slip st selvage only. Beg with a WS row, work mesh st according to chart A for 15 cm, ending with a WS row. Shape side: Working decs at end of RS rows only, work rows a – f of dec chart B once, then work rows c – f once more = 28 (30) sts. Bind off all sts.

**Top and bottom portion of right front:** Work same as top and bottom portion of left front, reversing all shaping.

**Top portion of sleeve:** Worked side to side. With size 5 mm needles, cast on 43 sts. Next row (RS): 2 selvage sts, work mesh st according to chart A, ending with a slip st selvage. Work 1 WS row. Shape sleeve cap: Work rows 3 – 10 of inc chart C twice = 47 sts. Work even for 30 (32) cm, ending with a WS row. Next row (RS): 2 selvage sts, dec 1 st, patt to end. Cont in patt, rep dec row every 4th row 3 times = 43 sts. Work 5 rows even. Bind off all sts.

**Bottom portion of sleeve:** Worked from the top down. With size 5 mm circular needle and RS facing, pick up and k 58 (60) sts evenly along bottom edge of top portion. Pick up back loop of slip st selvage only. Mark center 4 sts. Beg with a WS row, work mesh st according to chart A for 15 cm, ending with a WS row. Work rows c – f of dec chart B twice and at same time, on chart rows c and e, dec 2 sts across center 4 sts as foll: Yo, sl 1 kwise, k3tog, pass slipped st over knitted st = 42 (44) sts. Work even for 2 more rows. Bind off all sts.

**Right front band:** With size 3 mm needles, cast on 8 sts. Work according to chart D = 15 sts after row 1. Work rows 1

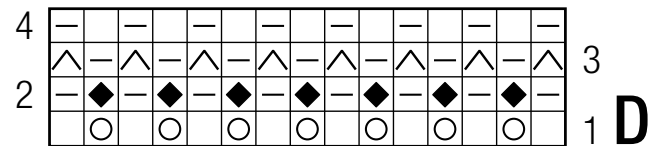
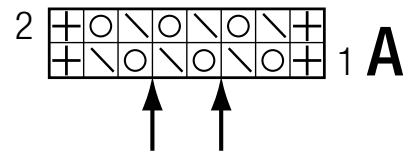
### JACKET

– 4 once, then rep rows 3 and 4 until band meas 18 cm from cast-on, ending with a WS row. Buttonhole row (RS): Patt over 7 sts, [yo, k2tog] for buttonhole, patt to end. Cont until band meas 65 (66) cm from cast-on. Bind off all sts.

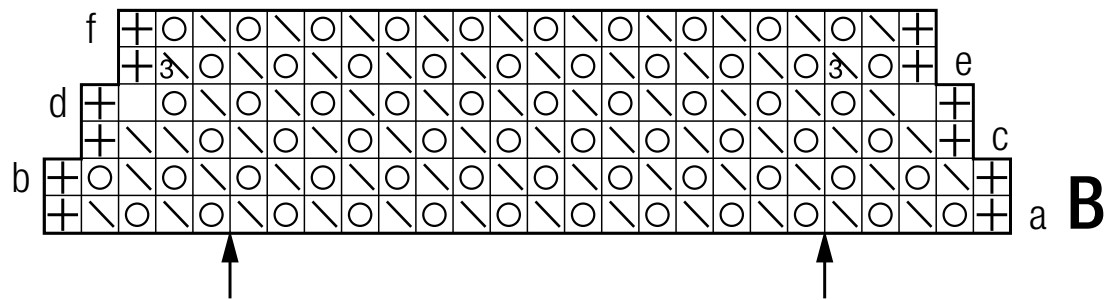
**Left front band:** Work same as for right front band, omitting buttonhole.

**Finishing:** Pin pieces to measurements and block. Sew shoulder seams. Join front bands and with seam at center back neck, sew band to right front, back neck and left front edge. Sew in sleeves, sewing between the 2 selvage sts. Sew side and sleeve seams. Sew on button.

### Charts A and D

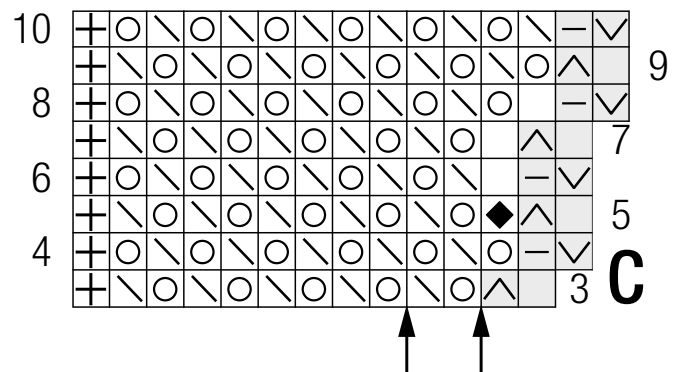


### Charts B and C

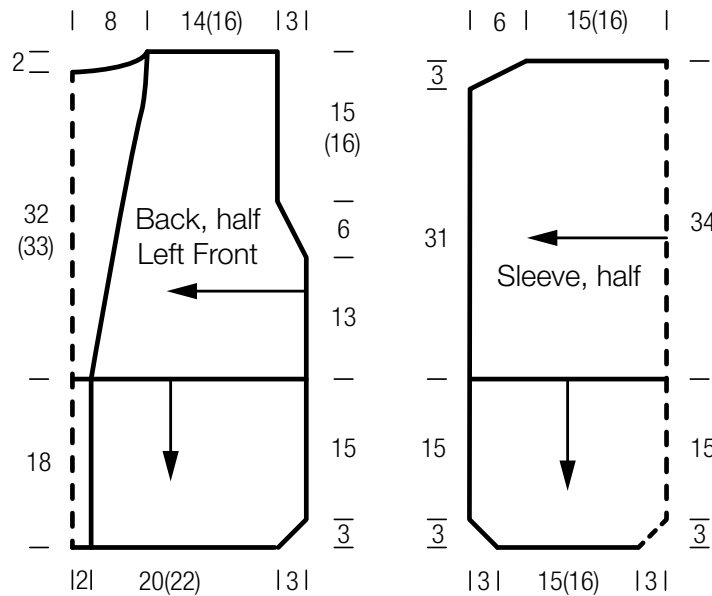


#### Chart key:

- ⊕ = slip st selvage
- = k1
- ▬ = p1
- = yo
- ◆ = k1tbl
- ⊞ = skp: sl 1 kwise, k1, pass slipped st over knitted st
- ⊚ = sk2p: sl 1 kwise, k2tog, pass slipped st over knitted st
- ⊠ = sl 1 pwise wyib
- ⊡ = sl 1 pwise wyif



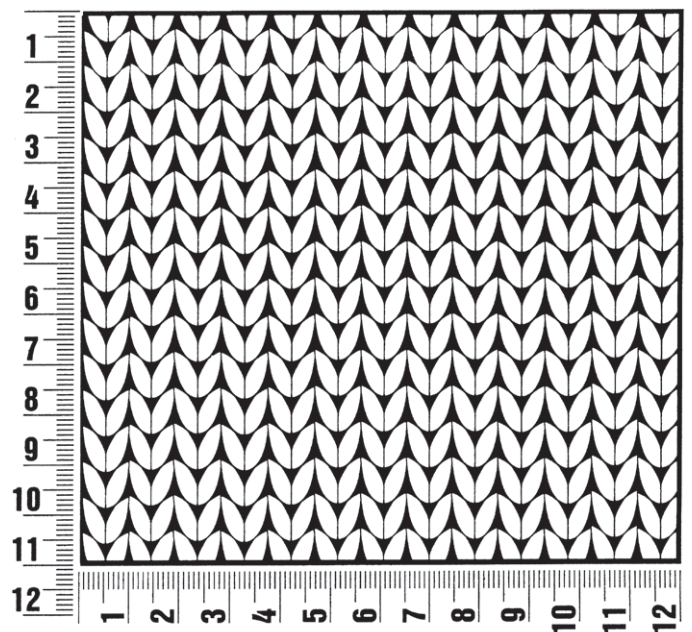
### JACKET



## Gauge Swatch

### Before you begin ...

...make a gauge swatch. Use the recommended needles, yarns and pattern stitch for your gauge swatch. It should measure approx. 12 cm x 12 cm. Cast-on and bind-off rows, as well as selvage stitches should not be included in the measurement. Pin your swatch and block it as you would the finished pieces of the garment. Count stitches and rows over 10 cm. If your gauge swatch is too small, switch to larger needles. If your gauge swatch is too big, switch to smaller needles.



## Abbreviations

**beg** = begin(ning) · **ch** = chain · **cont** = continue · **dec** = deas(e)(ing) · **inc** = increas(e)(ing) · **k** = knit · **kwise** = as if to knit  
**meas** = measures · **M1L** = lift strand between sts from front to back and knit this strand through the back loop · **M1R** = lift strand between sts from the back and knit this strand through the front loop · **patt** = pattern · **pm** = place marker · **p** = purl  
**pwise** = as if to purl · **rem** = remain(ing) · **rep** = repeat(s) · **rev St st** = reverse stockinette stitch · **rnd(s)** = round(s) · **RS** = right side · **sc** = single crochet · **skp** = slip 1 stitch as if to knit, knit 1 stitch, pass slipped stitch over knitted stitch · **sk2p** = slip 1 stitch as if to knit, knit 2 together, pass slipped stitch over knitted stitch · **s2kp** = slip 2 stitches as if to knit, k 1 stitch, pass slipped stitches over knitted stitch · **sl** = slip · **st(s)** = stitch(es) · **St st** = stockinette stitch · **tbl** = through the back loop · **tog** = together · **wyib** = with yarn in back of work · **wyif** = with yarn in front of work · **WS** = wrong side · **yo(s)** = yarn over(s)