



www.lanagrossa.com

© Lana Grossa GmbH - Photo: Nicolas Olmetzky c/o Bascha Kicki Fotografen, www.bascha-kicki-photographers.de

JACKET · ABOUT BERLIN CHILLY

Design 35 from Filati Journal 57

JACKET • ABOUT BERLIN CHILLY

Design 35 from Filati Journal 57



www.lanagrossa.com

Size 36/38 (40/42)

Instructions are given for first size. Figure in parenthesis refers to larger size. When only one figure is given, it applies to both sizes.

Materials: 450 (500) g of Lana Grossa **About Berlin Chilly** (100% linen; 95 m/50 g) in Blue (**col 12**). Size 4 and 6 mm needles; size 6 mm circular needle, 80 cm long; three 23 mm mother-of-pearl buttons [by Union Knopf, item 46286, col 14].

Slip stitch selvage: On every row: K first st, sl last st pwise wyif.

Rib patt: K1, p1.

St st: K on RS, p on WS.

Full-fashion dec: At beg of RS row, work 11 front band sts, k2, k2tog; at end of RS row, work to last 15 sts, skp, k2, work 11 front band sts.

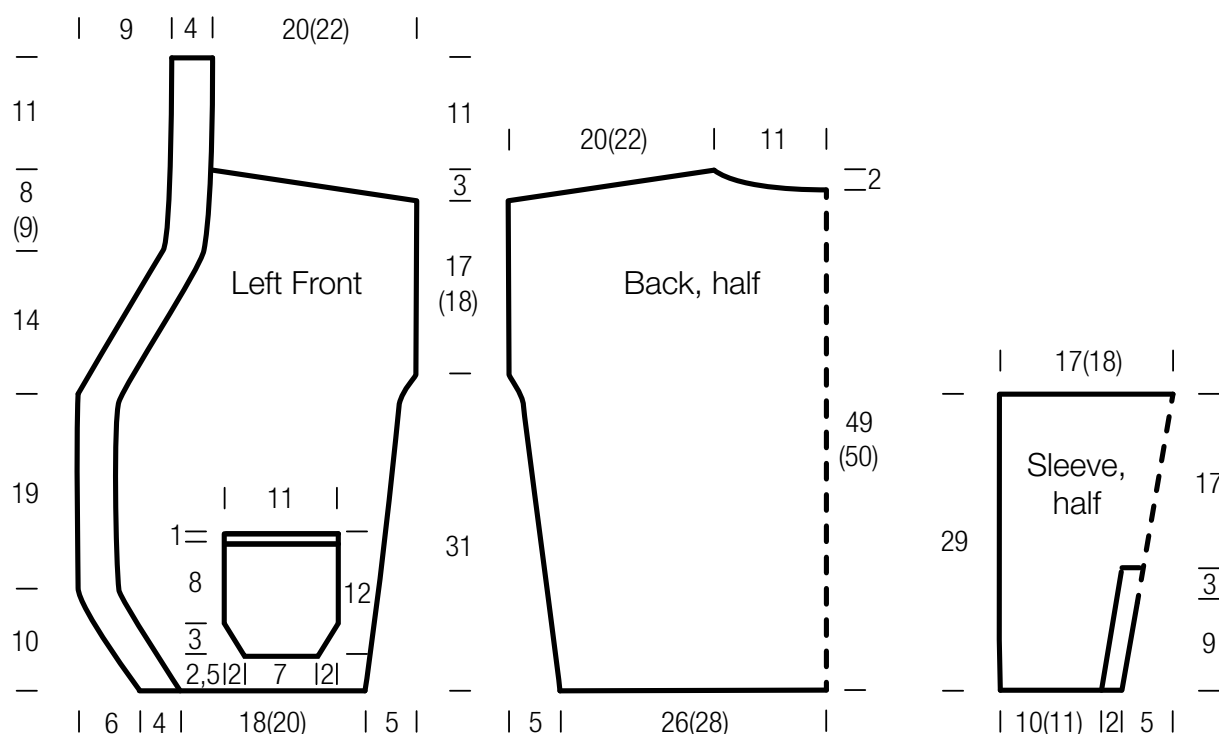
Left front band: Work according to chart A. Numbers at left edge of chart indicate WS rows, numbers at right edge of chart indicate RS rows. Work 11 sts between arrows for front band. Work rows 1 – 5 once, then rep rows 4 and 5.

Slitted sleeves: Work according to chart B. Numbers at left edge of chart indicate WS rows, numbers at right edge of chart indicate RS rows. Position sts as given in instructions. Work rows 1 – 3 once, then work rows 2 and 3 a total of 7 times, then work rows 18 – 26 once.

Gauge: 17 sts and 22 rows = 10 x 10 cm in St st on size 6 mm needles.

Back: With size 6 mm needles cast on 91 (97) sts. Work in rib patt for 1 WS row. Working a slip st selvage at each edge, work in St st for 6 rows. Shape sides: Inc row (RS): Slip st selvage, k2, M1R, knit to last 3 sts, M1R, k2, slip st selvage st = 93 (99) sts. Cont in St st, rep inc row every 8th row 5 more times = 103 (109) sts. Work 15 rows even. Shape sleeves: Inc row (RS): Slip st selvage, inc 1 st, knit to last st, inc 1 st, slip st selvage. Cont in St st, rep inc row 2 more times = 109 (115) sts. Work even until piece meas 48 (49) cm from cast-on, ending with a WS row. Shape shoulders and neck: At each shoulder edge, bind off 9 sts once, 9 (10) sts 3 times. At same time, when piece meas 1 cm from beg of shoulder shaping, shape neck as foll: Next row (RS): Bind off center 33 sts. Working each side separately, bind off 2 sts at each neck edge once. No sts rem.

Left front: With size 6 mm needles cast on 38 (41) sts. Next row (WS): Work sts between arrows on row 1 of chart A over first 6 sts, increasing 5 sts as shown on chart = 11 sts for front band, * p1, k1; rep from * to last 2 (1) st(s), p1 (p0), slip st selvage = 43 (46) sts. Next row (RS): Slip st selvage, work in St st to last 11 sts, work sts between arrows on row 2 of chart A over last 11 sts for front band. Next row (WS): Work in patt as established. Shape front edge: Next row (RS): Work to last 13 sts, M1R, work to end. Cont in patt, rep inc row every foll RS row 9 more times. At same time, beg on 8th row from cast-on, work incs for side and sleeve shaping at right edge same as for back. At same time, when piece meas 29 cm from cast-on, shape neck as foll: Working full-fashion dec, dec 1 st at end of next 15 RS rows. After all shaping is complete, 47 (50) sts rem on needle. Cont until same length as back to shoulder. Shape shoulder at right



JACKET • ABOUT BERLIN CHILLY

Design 35 from Filati Journal 57



www.lanagrossa.com

edge same as for back = 11 sts rem for neckband. Cont in patt across neckband sts for 11 cm. Bind off all sts as they appear.

Right front: Work same as for left front, reversing all shaping and patt placement and working 3 buttonholes at beg of RS rows as foll: Patt over 5 sts, [yo, k2tog tbl] for buttonhole, patt to end. Work first buttonhole at end of front edge shaping and rem 2 buttonholes spaced 9.5 cm apart.

Sleeves: With size 6 mm needles cast on 22 (24) sts for right half of sleeve. Next row (WS): Work 4 sts between arrow b and arrow a on row 1 of chart B, increasing 3 sts as shown on chart = 7 sts, * p1, k1; rep from * to last 2 sts, p1, slip st selvage st = 25 (27) sts. Next row (RS): Slip st selvage, work in St st to last 7 sts, work 7 sts between arrow a and arrow b on row 2 of chart B. Work 3 more rows in patt as established. Inc row (RS): Work to last 9 sts, M1R, work to end = 26 (28) sts. Cont in patt for 13 more rows, rep inc row every 6th row 2 more times = 28 (30) sts. Place sts on holder, do not cut yarn. With size 6 mm needles cast on 22 (24) sts for left half of sleeve. Next row (WS): Slip st selvage, * p1, k1; rep from * to last 5 sts, p1, work 4 sts between arrow c and arrow b on row 1 of chart B, increasing 3 sts as shown on chart = 7 sts and 25 (27) sts total. Next row (RS): Work 7 sts between arrow b and arrow c on row 2 of chart B, work in St st to last st, slip st selvage. Work 3 more rows in patt as established. Inc row (RS): Patt over first 9 sts, M1R, work to end = 26 (28) sts. Cont in patt for 13 more rows, rep inc row every 6th row 2 more times = 28 (30) sts. Place sts on holder, cut yarn. Joining row (RS): Work across right half sts: Slip st selvage, k20 (22), work sts between arrow a and b on row 20 of chart B, then work across left half sts: Work sts between arrow b and and arrow c on row 20 of chart B, k20 (22), slip st selvage and at same time, p2tog last st of right half and first st of left half as shown on chart = 55 (59) sts. Work 3 more rows in patt as established. Mark center 13 sts. Inc row (RS): Work in patt, M1R 2 sts before and 2 sts after marked sts = 57 (61) sts. Work 2 more rows in patt as established = 51 (55) sts. Next row (WS): Slip st selvage, work in St st to last st, slip st selvage. Cont in St st, rep inc row every 3rd row once, then every 6th row 4 times = 61 (65) sts. Work even until piece meas 29 cm from cast-on. Bind off all sts.

Pockets: Make 2 alike. With size 6 mm needles cast on 14 sts. Next row (WS): Slip st selvage, work in St st to last st, slip st selvage. Inc row (RS): Slip st selvage, M1R, work in St st to last st, M1R, slip st selvage = 16 sts. Maintaining selvage sts, cont in St st, rep inc row every foll RS row 2 more times = 20 sts. Work even for 8 cm, ending with a WS row. Change to size 4 mm needles. Work in rib patt for 3 rows, increasing 1 st on first row = 21 sts. Bind off all sts in rib.

Finishing: Pin pieces to measurements and block. Sew shoulder seams. Join right and left neckband and sew to back neck. Sew pockets to fronts, referring to schematic for placement. Sew on sleeves. Sew side and sleeve seams. Sew on buttons.

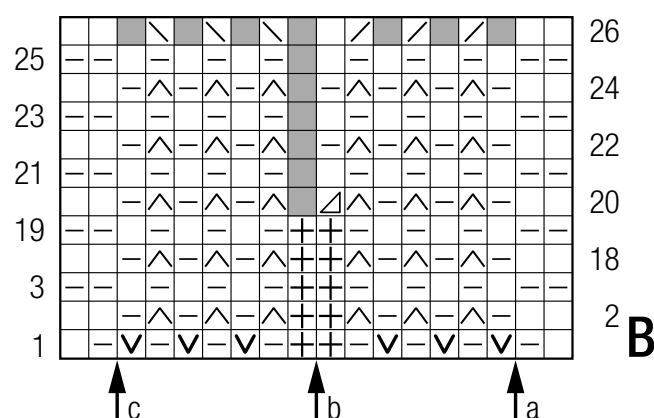


Chart A and B

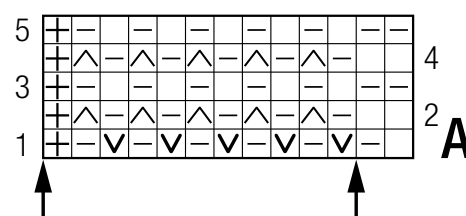


Chart key:

- ⊕ = slip st selvage
- = k1
- ▢ = p1
- ⊞ = M1R
- ⋈ = sl 1 pwise wyib
- ⊞ = p2tog
- = represents "no stitch" (included to keep st count correct)
- ⊞ = k2tog
- ⋈ = skp: sl 1 kwise, k1, pass slipped st over knitted st

Gauge Swatch

Before you begin ...

...make a gauge swatch. Use the recommended needles, yarns and pattern stitch for your gauge swatch. It should measure approx. 12 cm x 12 cm. Cast-on and bind-off rows, as well as selvage stitches should not be included in the measurement. Pin your swatch and block it as you would the finished pieces of the garment. Count stitches and rows over 10 cm. If your gauge swatch is too small, switch to larger needles. If your gauge swatch is too big, switch to smaller needles.



Abbreviations

beg = begin(ning) · **ch** = chain · **cont** = continue · **dec** = decreas(e)(ing) · **inc** = increas(e)(ing) · **k** = knit · **kwise** = as if to knit
meas = measures · **M1L** = lift strand between sts from front to back and knit this strand through the back loop · **M1R** = lift strand between sts from the back and knit this strand through the front loop · **patt** = pattern · **pm** = place marker · **p** = purl
pwise = as if to purl · **rem** = remain(ing) · **rep** = repeat(s) · **rev St st** = reverse stockinette stitch · **rnd(s)** = round(s) · **RS** = right side · **sc** = single crochet · **skp** = slip 1 stitch as if to knit, knit 1 stitch, pass slipped stitch over knitted stitch · **sk2p** = slip 1 stitch as if to knit, knit 2 together, pass slipped stitch over knitted stitch · **s2kp** = slip 2 stitches as if to knit, k 1 stitch, pass slipped stitches over knitted stitch · **sl** = slip · **st(s)** = stitch(es) · **St st** = stockinette stitch · **tbl** = through the back loop · **tog** = together · **wyib** = with yarn in back of work · **wyif** = with yarn in front of work · **WS** = wrong side · **yo(s)** = yarn over(s)

Publisher's Info

Publisher: Lana Grossa GmbH, Gaimersheim, www.lanagrossa.com
Photographer: Nicolas Olonetzky c/o Bascha Kicki Fotografen, www.bascha-photographers.de