



[www.lanagrossa.com](http://www.lanagrossa.com)

**PULLOVER ·**  
**ABOUT BERLIN CHILLY & SILKHAIR**  
Design 38 from Filati Journal 57

# PULLOVER ·

## ABOUT BERLIN CHILLY & SILKHAIR

### Design 38 from Filati Journal 57



www.lanagrossa.com

**Size** 36/38 (40/42, 44)

Instructions are given for first size. Figures in parenthesis refer to larger sizes. When only one figure is given, it applies to all sizes.

**Materials:** 150 (200, 200) g of Lana Grossa **About Berlin Chilly** (100% linen; 95 m/50 g) in Signal Red (**col 7**) and Olive (**col 2**) and 100 (150, 150) g in Red (**col 6**) and 75 (100, 125) g of Lana Grossa **Silkhair** (70% mohair, 30% silk; 210 m/25 g) in Chestnut (**col 114**). Size 7 mm needles; size 7 mm circular needle, 100 cm long; size 5.5 mm circular needle, 60 cm long; size 4.5 mm crochet hook.

**Note:** Work with 1 strand of each yarn held tog as given in instructions.

**Slip garter selvage:** On every row: Sl first st kwise, k last st.

**Rib patt:** K1, p1.

**Main patt:** Work according to chart. Numbers at left edge of chart indicate WS rows, numbers at right edge of chart indicate RS rows. Work to patt rep, work 2 sts between arrows for patt rep, work to end of chart. Rep rows as given in instructions.

**Full-fashion inc:** M1R, 3 sts in from each edge.

**Gauge:** 11 sts and 13 rows = 10 x 10 cm in main patt on size 7 mm needles, measured hanging from needle.

**Back:** With size 7 mm needles and 1 strand Red col 6 and 1 strand Silkhair held tog, cast on 75 (79, 83) sts. Beg with a WS row, work in main patt and shape sides as foll: Working full-fashion inc, inc 1 st at each end of 6th row from cast-on, then [every 2nd row once, then every 4th row once] 5 times, then every 2nd row once = 99 (103, 107) sts. Work increased sts into patt. Change to size 7 mm circular needle as st count increases. At same time, after having worked a total of 19 rows in main patt, break Red col 6. With Signal Red col 7 and

Silkhair held tog, cont as foll: Work rows 20 and 21 of chart once, then work rows 2 – 17 of chart once, then work rows 6 – 19 of chart once. Break Signal Red col 7. With Olive col 2 and Silkhair held tog, cont as foll: Work rows 20 and 21 of chart once, then work rows 2 – 17 of chart once, then rep rows 14 – 17 of chart throughout. At same time, when 43 rows have been worked from cast-on and piece meas approx. 31 cm, work next RS row as foll: K3tog, patt to last 3 sts, k3tog = 95 (99, 103) sts. Next row (WS): Slip garter selvage, patt to last st, slip garter selvage. Place marker at each edge to indicate beg of armholes. Maintaining slip garter selvage at each edge, cont in patt until piece meas 14 (15, 16) cm from armhole markers, ending with a WS row. Shape shoulders and neck: At each shoulder edge, bind off 3 sts 8 (6, 4) times, 4 sts 2 (4, 6) times. **Note:** Omit yos on row prior to bind-off. At same time, when piece meas 12 cm from beg of shoulder shaping, shape neck as foll: Next row (RS): Bind off center 25 sts. Working each side separately, bind off 3 sts at each neck edge once. No sts rem.

**Front:** Work same as for back until piece meas 9 cm from beg of shoulder shaping, ending with a WS row. Shape neck: Next row (RS): Bind off center 17 sts. Working each side separately, bind off 3 sts at each neck edge once, 2 sts once. No sts rem.

**Finishing:** Pin pieces to measurements and block. Sew shoulder seams. Neck trim: With size 4.5 mm hook and 1 strand Olive col 2 and 1 strand Silkhair held tog, work 1 rnd sc, then 1 rnd rev sc [work sc from left to right] around neck edge. Sleeves: With size 5.5 mm circular needle and strand Olive col 2 and 1 strand Silkhair held tog, pick up and k 42 (46, 50) sts between armhole markers. Work in rib patt for 16 cm. Loosely bind off all sts in rib. Sew sleeve seams, sew side seams over 1 cm below underarm, leaving bottom 31 cm of side seams unsewn.

# PULLOVER .

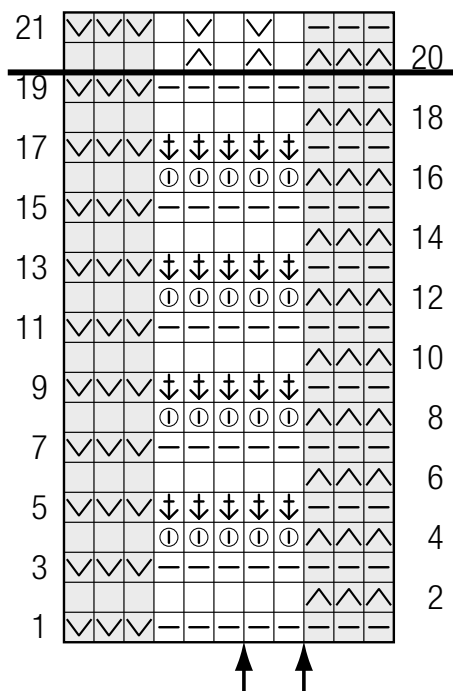
## ABOUT BERLIN CHILLY& SILKHAIR

Design 38 from Filati Journal 57



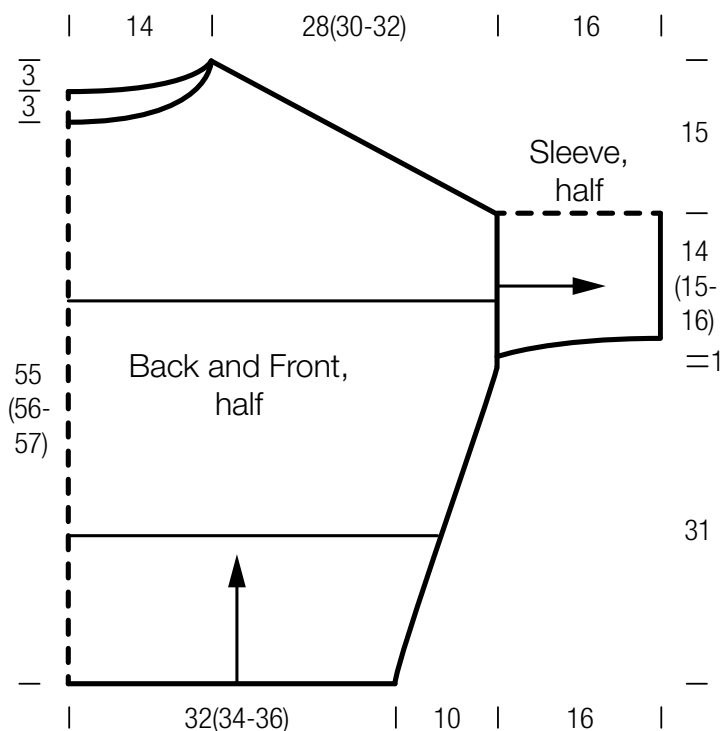
www.lanagrossa.com

**Chart**



**Chart key:**

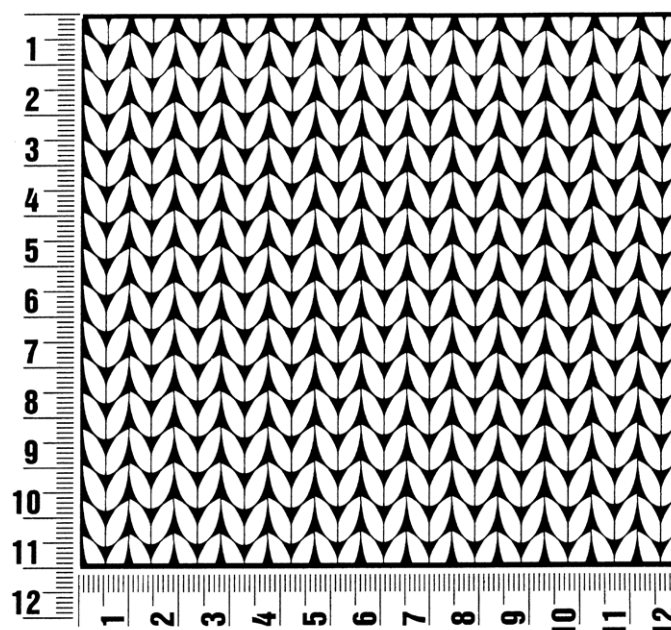
- = k1
- ▬ = p1
- △ = sl 1 pwise wyib
- ▽ = sl 1 pwise wyif
- ⓪ = yo, k1
- ⓪↓ = p1, dropping yo and pulling st up to elongate



## Gauge Swatch

### Before you begin ...

...make a gauge swatch. Use the recommended needles, yarns and pattern stitch for your gauge swatch. It should measure approx. 12 cm x 12 cm. Cast-on and bind-off rows, as well as selvage stitches should not be included in the measurement. Pin your swatch and block it as you would the finished pieces of the garment. Count stitches and rows over 10 cm. If your gauge swatch is too small, switch to larger needles. If your gauge swatch is too big, switch to smaller needles.



## Abbreviations

**beg** = begin(ning) · **ch** = chain · **cont** = continue · **dec** = decreas(e)(ing) · **inc** = increas(e)(ing) · **k** = knit · **kwise** = as if to knit  
**meas** = measures · **M1L** = lift strand between sts from front to back and knit this strand through the back loop · **M1R** = lift strand between sts from the back and knit this strand through the front loop · **patt** = pattern · **pm** = place marker · **p** = purl  
**pwise** = as if to purl · **rem** = remain(ing) · **rep** = repeat(s) · **rev St st** = reverse stockinette stitch · **rnd(s)** = round(s) · **RS** = right side · **sc** = single crochet · **skp** = slip 1 stitch as if to knit, knit 1 stitch, pass slipped stitch over knitted stitch · **sk2p** = slip 1 stitch as if to knit, knit 2 together, pass slipped stitch over knitted stitch · **s2kp** = slip 2 stitches as if to knit, k 1 stitch, pass slipped stitches over knitted stitch · **sl** = slip · **st(s)** = stitch(es) · **St st** = stockinette stitch · **tbl** = through the back loop · **tog** = together · **wyib** = with yarn in back of work · **wyif** = with yarn in front of work · **WS** = wrong side · **yo(s)** = yarn over(s)

### Publisher's Info

**Publisher:** Lana Grossa GmbH, Gaimersheim, www.lanagrossa.com  
**Photographer:** Nicolas Olonetzky c/o Bascha Kicki Fotografen, www.bascha-photographers.de