



www.lanagrossa.com

TOP .
ABOUT BERLIN CHILLY DÉGRADÉ
Design 40 from Filati Journal 57

TOP .

ABOUT BERLIN CHILLY DÉGRADÉ

Design 40 from Filati Journal 57



www.lanagrossa.com

Size 34/36 (38/40)

Instructions are given for first size. Figure in parenthesis refers to larger size. When only one figure is given, it applies to both sizes.

Materials: 300 (450) g of Lana Grossa **About Berlin Chilly Dégradé** (100% linen; 390 m/150 g) in Red Dégradé (col 106). Size 4 mm needles; size 3.5 mm crochet hook.

Slip garter selvage: On every row: Sl first st kwise, k last st.

Garter st: K every row.

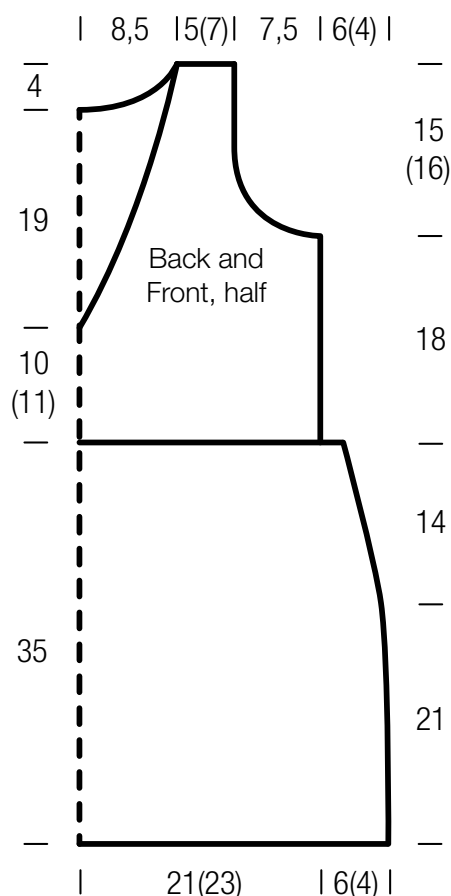
Drop stitch lace: Work according to chart. Numbers at right edge of chart indicate RS rows, numbers at left edge of chart indicate WS rows. Work to patt rep, work 4 sts between arrows for patt rep, work to end of chart. Work rows 1 – 48 once, then rep rows 13 – 48.

Gauges: On size 4 mm needles: 18.5 sts and 36 rows = 10 x 10 cm in garter st; 16 sts and 25 rows = 10 x 10 cm in drop st lace.

Back: With size 4 mm needles cast on 98 sts. Work in drop st lace according to chart for 52 rows and piece meas approx. 21 cm from cast-on. Shape sides: Dec row (RS): Work in patt, dec 1 st at each end of row = 96 sts. Cont in patt, rep dec row every 8th row twice, then every 6th row 3 times = 86 sts. Work 1 WS row. Next row (RS): Work in garter st, decreasing 6 sts evenly across row (increasing 2 sts evenly across row) = 80 (88) sts. Cont in garter st for 18 cm, ending with a WS row. Shape armholes: Bind off 5 sts at beg of next 2 rows, 3 sts at beg of next 2 rows, 2 sts at beg of next 4 rows, 1 st at beg of next 4 rows = 52 (60) sts. Work even until armhole meas 11 (12) cm, ending with a WS row. Shape neck: Next row (RS): Bind off center 20 sts. Working each side separately, bind off 2 sts at each neck edge once, 1 st 4 times. Work even until piece meas 4 cm from beg of neck shaping. Bind off rem 10 (14) sts for each shoulder.

Front: Work same as for back until 10 (11) cm have been worked in garter st, ending with a WS row. Shape V-neck: Divide work at center. Working each side separately, cont in garter st, dec 1 st at each neck edge every RS row 6 times, then every 4th row 4 times, then every 8th row 6 times. At same time, when same length as back to armholes, shape armholes same as for back and when same length as back to shoulders, bind off rem 10 (14) sts for each shoulder.

Finishing: Pin pieces to measurements and block. Sew shoulder and side seams. **Neck and armhole trim:** With size 3.5 mm crochet hook, work 1 rnd sl st around neck edge and around each armhole edge.



TOP .

ABOUT BERLIN CHILLY DÉGRADÉ

Design 40 from Filati Journal 57



www.lanagrossa.com

Chart

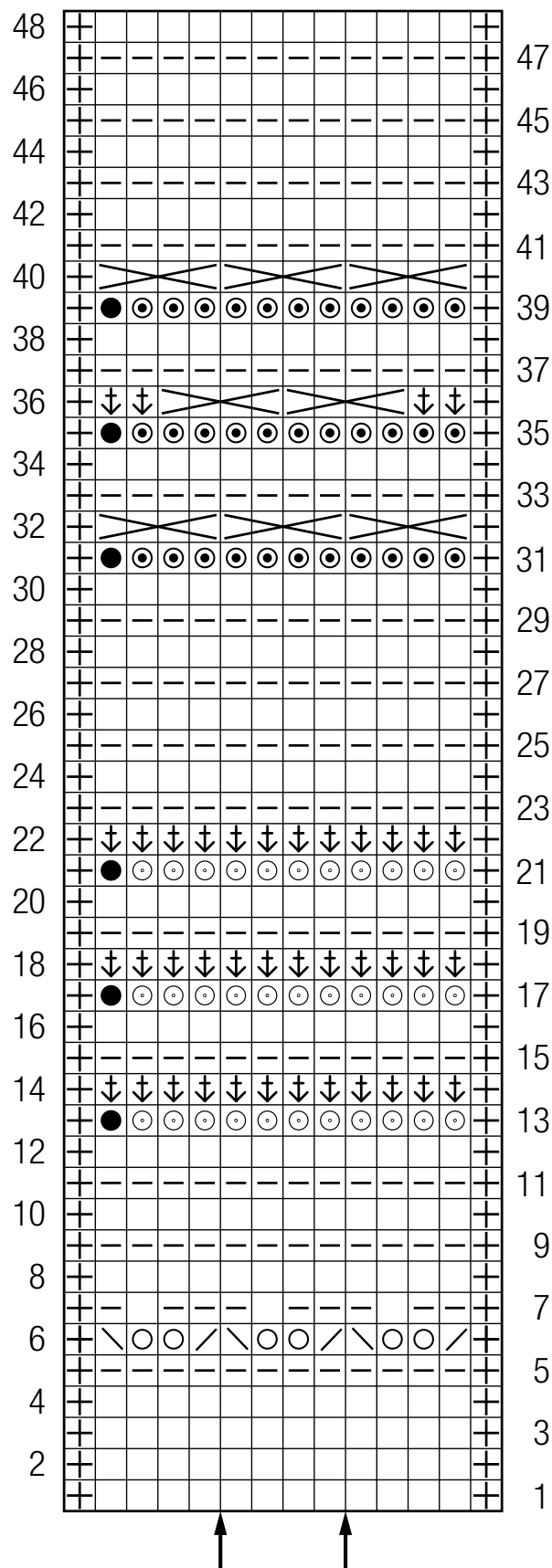


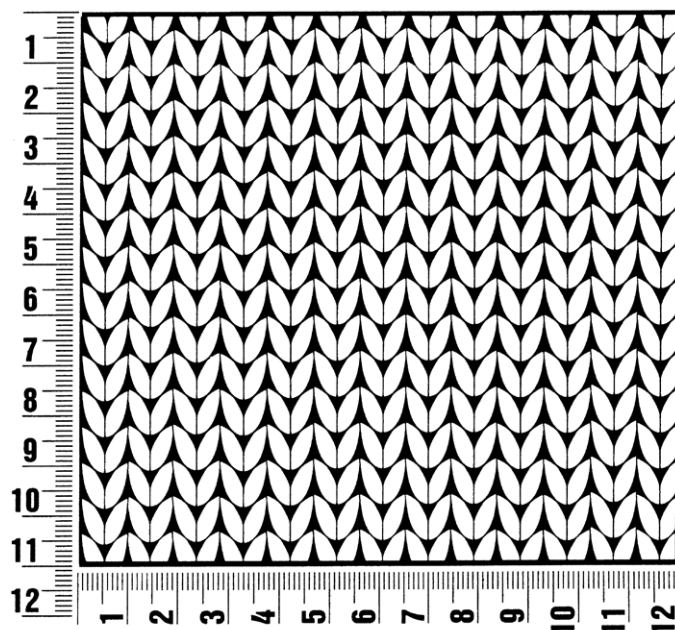
Chart key:

- ⊕ = slip garter selvage
- = k1
- = p1
- ⊙ = yo, k1
- ↓ = p1, dropping yo(s) and pulling st up to elongate
- ⊗ = yo twice, k1
- = yo, k1, yo
- = yo
- ↗ = k2tog
- ↘ = skp: sl 1 kwise, k1, pass slipped st over knitted st
- ⌵ = sl 4 sts to right needle, dropping yos and pulling sts up to elongate; pass first and 2nd st over 3rd and 4th st, sl 4 sts back to left needle, p4

Gauge Swatch

Before you begin ...

...make a gauge swatch. Use the recommended needles, yarns and pattern stitch for your gauge swatch. It should measure approx. 12 cm x 12 cm. Cast-on and bind-off rows, as well as selvage stitches should not be included in the measurement. Pin your swatch and block it as you would the finished pieces of the garment. Count stitches and rows over 10 cm. If your gauge swatch is too small, switch to larger needles. If your gauge swatch is too big, switch to smaller needles.



Abbreviations

beg = begin(ning) · **ch** = chain · **cont** = continue · **dec** = decreas(e)(ing) · **inc** = increas(e)(ing) · **k** = knit · **kwise** = as if to knit
meas = measures · **M1L** = lift strand between sts from front to back and knit this strand through the back loop · **M1R** = lift strand between sts from the back and knit this strand through the front loop · **patt** = pattern · **pm** = place marker · **p** = purl
pwise = as if to purl · **rem** = remain(ing) · **rep** = repeat(s) · **rev St st** = reverse stockinette stitch · **rnd(s)** = round(s) · **RS** = right side · **sc** = single crochet · **skp** = slip 1 stitch as if to knit, knit 1 stitch, pass slipped stitch over knitted stitch · **sk2p** = slip 1 stitch as if to knit, knit 2 together, pass slipped stitch over knitted stitch · **s2kp** = slip 2 stitches as if to knit, k 1 stitch, pass slipped stitches over knitted stitch · **sl** = slip · **st(s)** = stitch(es) · **St st** = stockinette stitch · **tbl** = through the back loop · **tog** = together · **wyib** = with yarn in back of work · **wyif** = with yarn in front of work · **WS** = wrong side · **yo(s)** = yarn over(s)

Publisher's Info

Publisher: Lana Grossa GmbH, Gaimersheim, www.lanagrossa.com
Photographer: Nicolas Olonetzky c/o Bascha Kicki Fotografen, www.bascha-photographers.de