



[www.lanagrossa.com](http://www.lanagrossa.com)

**JACKET .**  
**ECOPUNO & SILKHAIR PRINT**  
Design 41 from Filati Journal 57

# JACKET ·

## ECOPUNO & SILKHAIR PRINT

### Design 41 from Filati Journal 57



www.lanagrossa.com

#### Size 36/38 (40/42)

Instructions are given for first size. Figure in parenthesis refers to larger size. When only one figure is given, it applies to both sizes.

**Materials:** 250 (300) g of Lana Grossa **Ecopuno** (72% cotton, 17% pure wool, 11% alpaca; 215 m/50 g) in Brown/Red (col 31) and 100 (150) g of Lana Grossa **Silkhair Print** (70% superkid mohair, 30% silk; 400 m/50 g) in Red-Brown/Chestnut/Chocolate/Black-Brown (col 351). Size 3.5 mm needles; size 3.5 mm circular needle, 120 cm long; size 4.5 mm crochet hook; five 20 mm mother-of-pearl buttons in red/brown [by Union Knopf, item 453037, col 22].

**Rib patt:** K2, p2.

**Crochet patt:** Work according to chart. Numbers at right edge of chart indicate RS rows, numbers at left edge of chart indicate WS rows. Work first dc on first row in 7th ch from hook. Letters at right and left edge of chart indicate yarn used: **E** = Ecopuno, **SP** = Silkhair Print. Rows worked with Ecopuno are shown in grey on chart, rows worked with Silkhair Print are shown in black on chart. Break Ecopuno at end of RS row, rejoin with sl st at beg of RS row as needed. Silkhair Print is ready to be worked as needed. Work to patt rep, work sts between arrows for patt rep, work to end of chart. Work rows 1 – 21 once, then rep rows 12 – 21.

**Gauges:** 7 patt reps and 13.5 rows = 10 x 10 cm in crochet patt with size 4.5 mm hook; 24 sts and 35 rows = 10 x 10 cm in rib patt on size 3.5 mm needles.

**Back and fronts:** Worked in one piece, beginning at lower edge of back; 2 fronts are then worked separately down to lower edge. Arrow on schematic shows direction of work. With size 4.5 mm hook and Ecopuno, ch 102 (108) + ch 2 + ch 3 (counts as dc). Work crochet patt according to chart, working patt rep 34 (36) times across row: 10 (11) patt reps for each front and 14 patt reps for back. When piece meas approx. 43 (42) cm from beg and 58 (56) rows have been

worked in patt, work fronts separately as foll: **Left front:** Cont in patt across left front sts only and shape front edge as foll: At right edge, inc 1 patt rep over every 4 rows 6 times = 24 shaping rows and 16 (17) patt reps. Work even in patt for 57 rows and piece meas approx. 42 cm from end of front edge shaping. Fasten off. **Right front:** Rejoin yarn and complete as for left front, reversing all shaping.

**Sleeves:** Worked from the bottom up. Arrow on schematic shows direction of work. With size 3.5 mm needles cast on 64 (70) sts. Next row (WS): **For size 36/38 only:** Selvage st, p2, \* k2, p2; rep from \*, end selvage st. **For size 40/42 only:** Selvage st, p1, \* k2, p2; rep from \* to last 4 sts, k2, p1, selvage st. **For both sizes:** Cont in rib patt as established and shape sleeve as foll: Inc 1 st at each end of 10th row from cast-on, then every foll 10th row 9 more times = 84 (90) sts. Work increased sts into patt. Work even until piece meas 34 cm from cast-on. Loosely bind off all sts in rib.

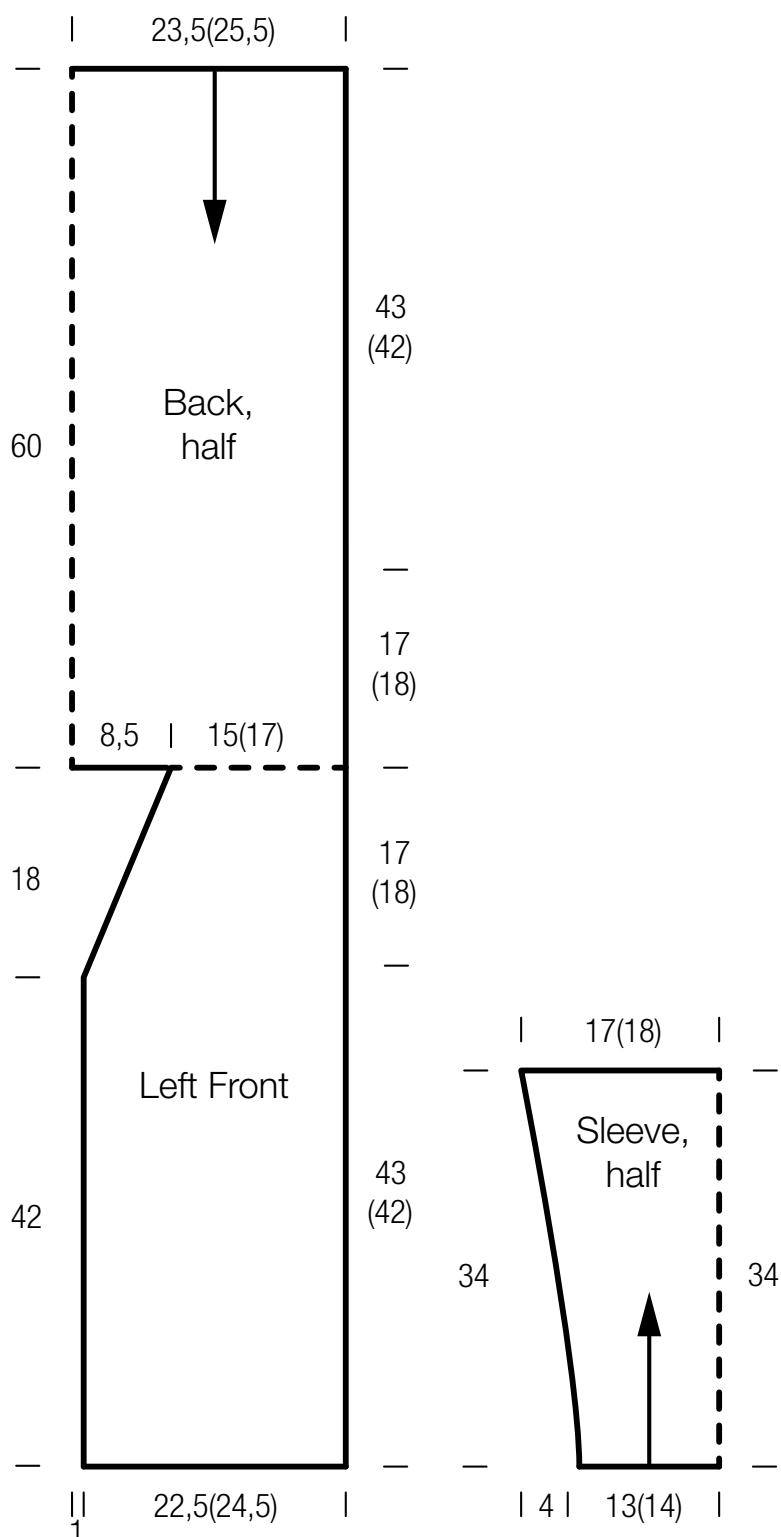
**Finishing:** Pin pieces to measurements and block. **Front and neckband:** With size 4.5 mm hook and Ecopuno work 2 rows sc along right front, back neck and left front edge. With size 3.5 mm circular needle and RS facing, pick up and k 376 sts in last sc row: 103 sts along straight edge and 58 sts along shaped edge of right front, 54 sts along back neck edge, 58 sts along shaped edge and 103 sts along straight edge of left front. Next row (WS): Selvage st, k2, \* p2, k2; rep from \*, end selvage st. Cont in rib patt as established for 3 more rows. Buttonhole row (WS): Patt to last 103 sts, bind off 2 sts, \* patt over 22 sts, bind off 2 sts; rep from \* 3 more times, patt to end. Next row (RS): Patt to end of row, cast on 2 sts over each set of bound-off sts. Cont in rib patt until band meas 3 cm from pick-up row. Bind off all sts in rib. **Bottom edging:** With size 4.5 mm hook and Ecopuno work 1 row sc along bottom edge of fronts and back. Place markers 17 (18) cm down from shoulders on fronts and back. Sew on sleeves between markers. Sew side and sleeve seams. Sew on buttons.

# JACKET . ECOPUNO & SILKHAIR PRINT

Design 41 from Filati Journal 57



www.lanagrossa.com



# JACKET .

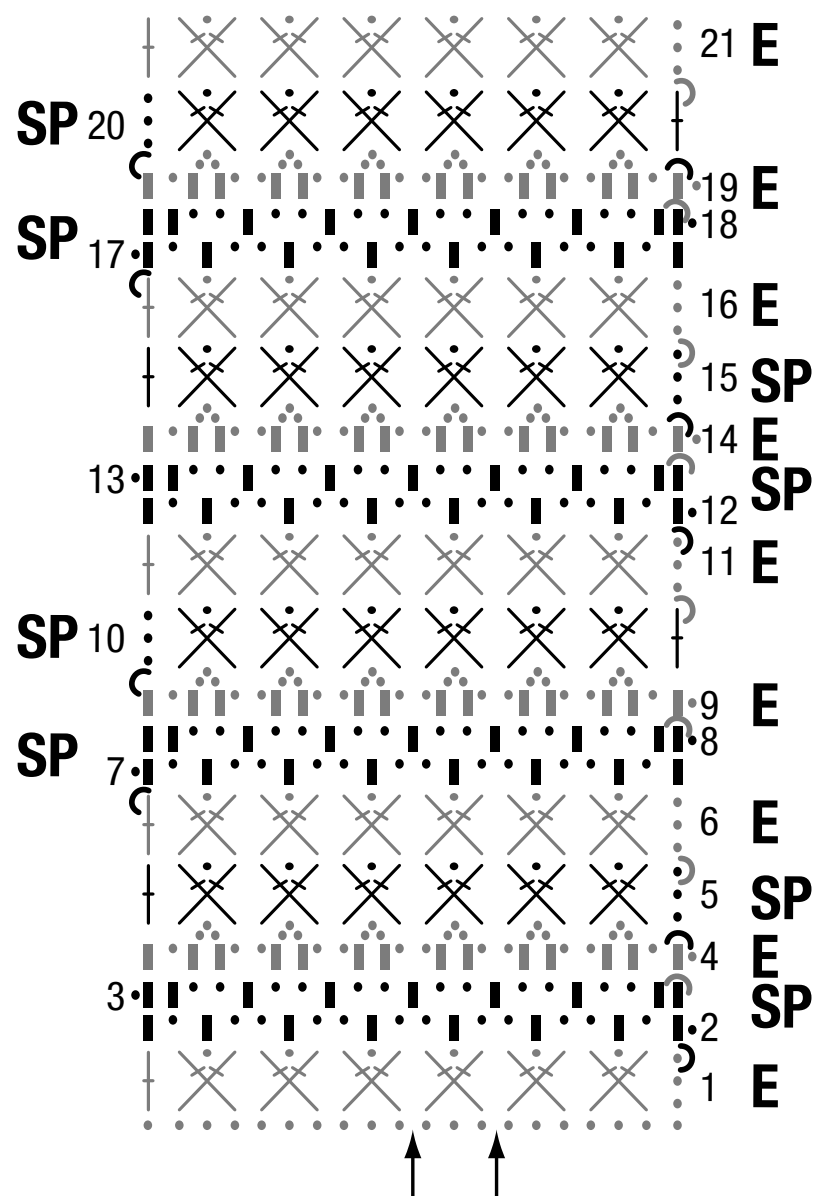
## ECOPUNO & SILKHAIR PRINT

Design 41 from Filati Journal 57



www.lanagrossa.com

Chart



### Chart key:

- = chain (ch)
- ⤿ = slip stitch (sl st)
- ▮ = single crochet (sc)
- ⊥ = double crochet (dc)
- ⊗ = crossed dc: skip next 2 sts, dc in next st or into next ch-sp, ch 1, dc in same st or into same ch-sp as first dc



## Gauge Swatch

### Before you begin ...

...make a gauge swatch. Use the recommended needles, yarns and pattern stitch for your gauge swatch. It should measure approx. 12 cm x 12 cm. Cast-on and bind-off rows, as well as selvage stitches should not be included in the measurement. Pin your swatch and block it as you would the finished pieces of the garment. Count stitches and rows over 10 cm. If your gauge swatch is too small, switch to larger needles. If your gauge swatch is too big, switch to smaller needles.



## Abbreviations

**beg** = begin(ning) · **ch** = chain · **cont** = continue · **dec** = decreas(e)(ing) · **inc** = increas(e)(ing) · **k** = knit · **kwise** = as if to knit  
**meas** = measures · **M1L** = lift strand between sts from front to back and knit this strand through the back loop · **M1R** = lift strand between sts from the back and knit this strand through the front loop · **patt** = pattern · **pm** = place marker · **p** = purl  
**pwise** = as if to purl · **rem** = remain(ing) · **rep** = repeat(s) · **rev St st** = reverse stockinette stitch · **rnd(s)** = round(s) · **RS** = right side · **sc** = single crochet · **skp** = slip 1 stitch as if to knit, knit 1 stitch, pass slipped stitch over knitted stitch · **sk2p** = slip 1 stitch as if to knit, knit 2 together, pass slipped stitch over knitted stitch · **s2kp** = slip 2 stitches as if to knit, k 1 stitch, pass slipped stitches over knitted stitch · **sl** = slip · **st(s)** = stitch(es) · **St st** = stockinette stitch · **tbl** = through the back loop · **tog** = together · **wyib** = with yarn in back of work · **wyif** = with yarn in front of work · **WS** = wrong side · **yo(s)** = yarn over(s)

### Publisher's Info

**Publisher:** Lana Grossa GmbH, Gaimersheim, [www.lanagrossa.com](http://www.lanagrossa.com)  
**Photographer:** Nicolas Olonetzky c/o Bascha Kicki Fotografen, [www.bascha-photographers.de](http://www.bascha-photographers.de)