



www.lanagrossa.com

PULLOVER · PRIMA

Design 22 from Filati Classici 16

PULLOVER · PRIMA

Design 22 from Filati Classici 16



www.lanagrossa.com

Size 36/38 (40/42, 44)

Instructions are given for first size. Figures in parenthesis refer to larger sizes. When only one figure is given, it applies to all sizes.

Materials: 500 (550, 600) g of Lana Grossa **Prima** (100% combed, mercerized, gassed cotton; 140 m/50 g) in Emerald (col 15). Size 3 and 3.5 mm needles; size 3 mm circular needle, 40 cm long.

Rib patt: K1, p1.

Body patt: Multiple of 20 + 1 + 2 selvage sts. Work according to chart. Numbers at right edge of chart indicate RS rows, numbers at left edge of chart indicate WS rows. Rep rows 1 – 6.

Gauge: 21 sts and 36 rows = 10 x 10 cm in body patt on size 3.5 mm needles.

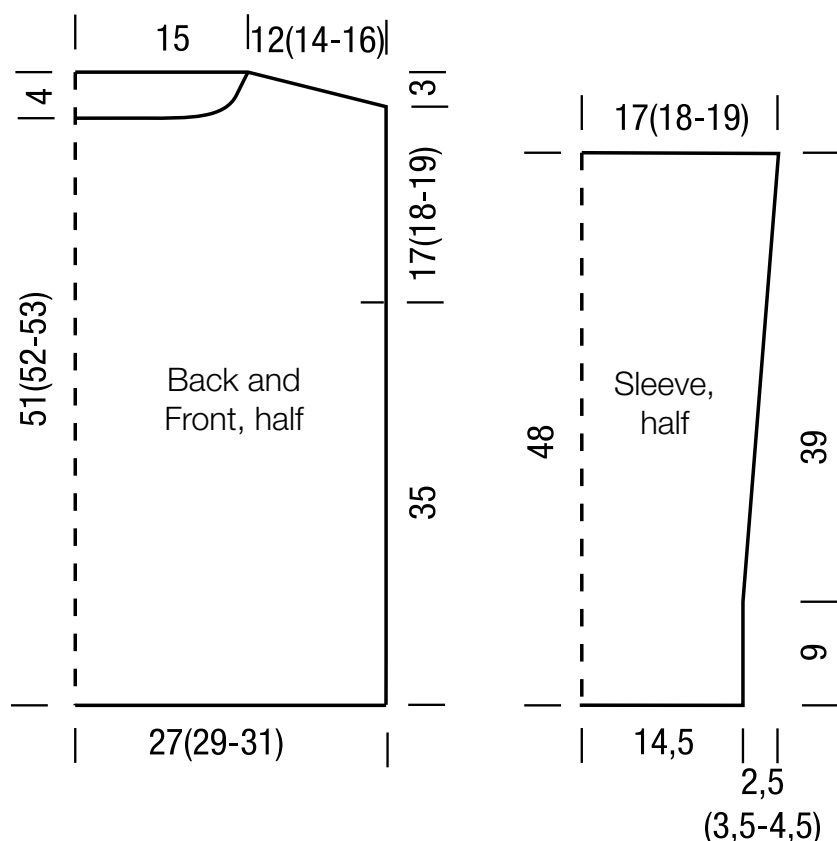
Back: With size 3 mm needles cast on 115 (123, 131) sts. K 1 WS row, then work in body patt according to chart as foll: Next row (RS): For size 36/38: Selvage st; beg at arrow B, work 16 sts to end of patt rep, work patt rep 4 times, then work first 17 sts of patt rep once more, ending at arrow C; selvage st. For size 40/42: Selvage st; work patt rep 6 times, work 1 st after patt rep; selvage st. For size 44: Selvage st; work to patt rep, work patt rep 6 times, work to end of chart; selvage st. For all sizes: Cont in body patt as established for 5 more rows. Change to size 3.5 mm needles. Cont in body patt as established until piece meas 52 (53, 54) cm from cast-on, ending

with a WS row. Shape shoulders: At each shoulder edge, bind off 4 (5, 5) sts once, then 4 sts 3 times, 5 sts twice (then 5 sts 5 times / then 5 sts once, 6 sts 4 times). Bind off rem 63 sts.

Front: Work same as for back until piece meas 51 (52, 53) cm from cast-on, ending with a WS row. Shape neck and shoulders: Next row (RS): Bind off center 29 sts. Working each side separately, bind off 4 sts at each neck edge once, 3 sts 3 times, 2 sts once, 1 st twice. At same time, when piece meas 1 cm from beg of neck shaping, shape shoulders same as for back. No sts rem.

Sleeves: With size 3 mm needles cast on 63 sts. K 1 WS row, then work in body patt according to chart as foll: Next row (RS): Selvage st; work patt rep 3 times, work 1 st after patt rep; selvage st. Cont in body patt as established for 5 more rows. Change to size 3.5 mm needles. Cont in body patt as established and shape sleeve as foll: Inc 1 st at each end of 31st row from cast-on, then every 28th row 4 times (then every 20th row 6 times / then every 16th row 8 times, then every 8th row 3 times) = 73 (77, 79) sts. Work increased sts into patt. Cont in patt until piece meas 48 cm from cast-on. Bind off all sts.

Finishing: Pin pieces to measurements and block. Sew shoulder seams. **Neckband:** With size 3 mm circular needle pick up and k 130 sts evenly around neck edge. Join for working in rnds. P 1 rnd, k 1 rnd, then work rib patt in rnds until band meas 2 cm from pick-up rnd. Bind off all sts in rib. Place markers 17 (18, 19) cm down from shoulders on front and back. Sew on sleeves between markers. Sew side and sleeve seams.



PULLOVER · PRIMA

Design 22 from Filati Classici 16



www.lanagrossa.com

Chart

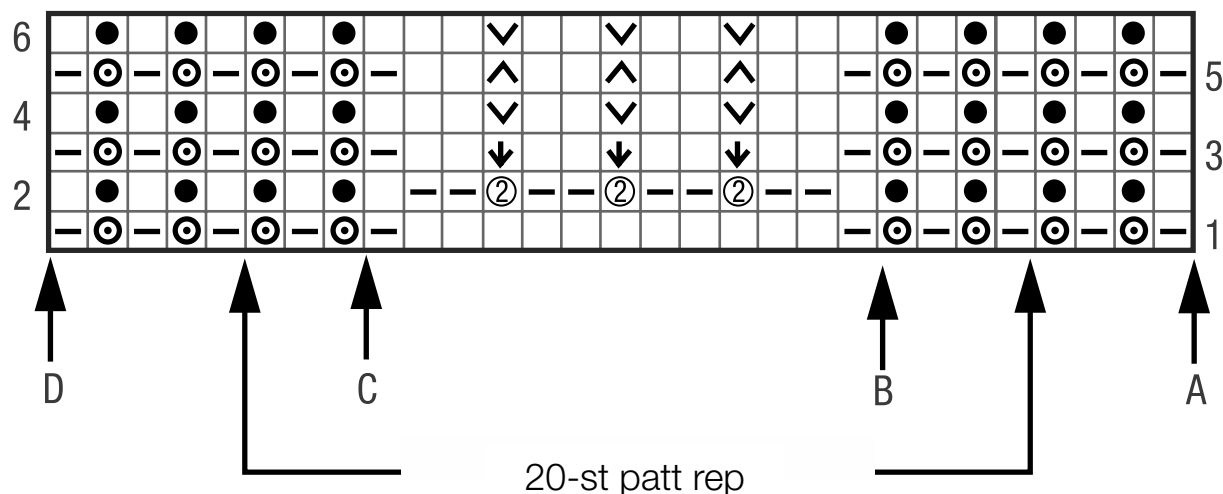


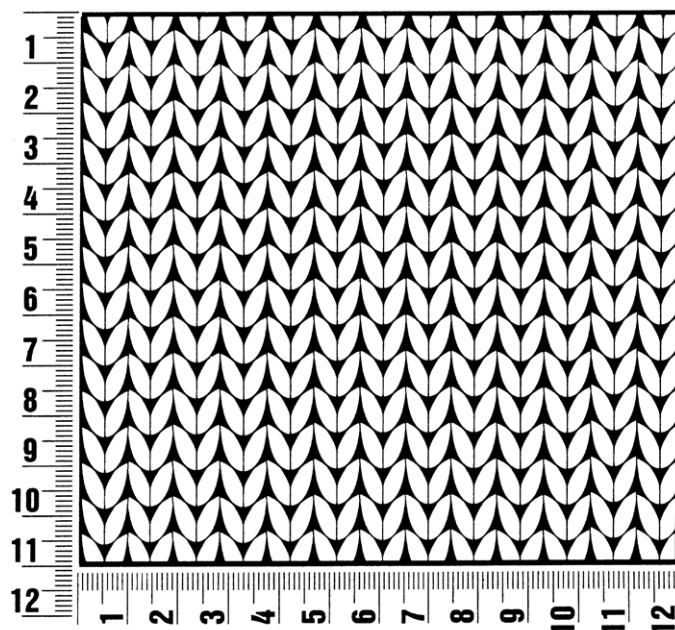
Chart key:

- = k1
- ◻ = p1
- ⊙ = make a yo, then sl next st as if to purl
- = ptog next st and yo
- ② = p1, wrapping yarn twice around needle
- ⏚ = sl 1 pwise wyib, dropping yo and pulling st up to elongate
- ✓ = sl 1 pwise wyif
- ⏚ = sl 1 pwise wyib

Gauge Swatch

Before you begin ...

...make a gauge swatch. Use the recommended needles, yarns and pattern stitch for your gauge swatch. It should measure approx. 12 cm x 12 cm. Cast-on and bind-off rows, as well as selvage stitches should not be included in the measurement. Pin your swatch and block it as you would the finished pieces of the garment. Count stitches and rows over 10 cm. If your gauge swatch is too small, switch to larger needles. If your gauge swatch is too big, switch to smaller needles.



Abbreviations

beg = begin(ning) · **ch** = chain · **cont** = continue · **dec** = decreas(e)(ing) · **inc** = increas(e)(ing) · **k** = knit · **kwise** = as if to knit
meas = measures · **M1L** = lift strand between sts from front to back and knit this strand through the back loop · **M1R** = lift strand between sts from the back and knit this strand through the front loop · **patt** = pattern · **pm** = place marker · **p** = purl
pwise = as if to purl · **rem** = remain(ing) · **rep** = repeat(s) · **rev St st** = reverse stockinette stitch · **rnd(s)** = round(s) · **RS** = right side · **sc** = single crochet · **skp** = slip 1 stitch as if to knit, knit 1 stitch, pass slipped stitch over knitted stitch · **sk2p** = slip 1 stitch as if to knit, knit 2 together, pass slipped stitch over knitted stitch · **s2kp** = slip 2 stitches as if to knit, k 1 stitch, pass slipped stitches over knitted stitch · **sl** = slip · **st(s)** = stitch(es) · **St st** = stockinette stitch · **tbl** = through the back loop · **tog** = together · **wyib** = with yarn in back of work · **wyif** = with yarn in front of work · **WS** = wrong side · **yo(s)** = yarn over(s)

Publisher's Info

Publisher: Lana Grossa GmbH, Gaimersheim, www.lanagrossa.com
Photographer: Nicolas Olonetzky c/o Bascha Kicki Fotografen, www.bascha-photographers.de