



www.lanagrossa.com

SLIPOVER · ABOUT BERLIN CHILLY

Design 03 from Filati Classici 16

Photo: Wilfried Wulff, www.wilfriedwulff.com

SLIPOVER · ABOUT BERLIN CHILLY

Design 03 from Filati Classici 16



www.lanagrossa.com

Size 46 (50/52, 56)

Instructions are given for first size. Figures in parenthesis refer to larger sizes. When only one figure is given, it applies to all sizes.

Materials: 500 (550, 600) g of Lana Grossa **About Berlin Chilly** (100% linen; 95 m/50 g) in Grey (**col 10**). Size 5 mm needles.

Main patt: Multiple of 6 + 4 + 2 selvage sts. Work according to chart. Number at right edge of chart indicates RS row, number at left edge of chart indicates WS row. Rep rows 1 and 2.

2 selvage sts: At beg of RS row, k1, sl 1 pwise wyib, pulling yarn tight; at end of RS row, work to last 2 sts, sl 1 pwise wyib, pulling yarn tight, k1. At beg of WS row, sl 1 pwise wyif, pulling yarn tight, p1; at end of WS row, work to last 2 sts, p1, sl 1 pwise wyif, pulling yarn tight.

12-st slip st edge: At beg of RS row, sl 2 pwise wyib, [p1, sl 1 pwise wyib] 5 times; at end of RS row, work to last 12 sts, [sl 1 pwise wyib, p1] 5 times, sl 2 pwise wyib. At beg of WS row, p2, [k1, p1] 5 times; at end of WS row, work to last 12 sts [p1, k1] 5 times, p2.

Full-fashion dec 1: At beg of RS row, 2 selvage sts, k2tog; at end of RS row, work to last 4 sts, skp, 2 selvage sts.

Full-fashion dec 2: At beg of RS row, 12-st slip st edge, k2tog; at end of RS row, work to last 14 sts, skp, 12-st slip st edge.

Gauge: 20 sts and 30 rows = 10 x 10 cm in main patt on size 5 mm needles.

Back: With size 5 mm needles cast on 104 (116, 128) sts. Next row (WS): Selvage st, * p1, k1; rep from *, end selvage st. Next row (RS): 2 selvage sts, work in main patt according to chart [work 6-st patt rep 16 (18, 20) times, work to end of chart], 2 selvage sts. Cont in main patt until piece meas 35

(36, 37) cm from cast-on, ending with a WS row. Shape armholes: Working full-fashion dec 1, dec 1 st at each end of next 6 RS rows = 92 (104, 116) sts. Work even until armhole meas 22 (23, 24) cm, ending with a WS row. Shape shoulders and neck: At each shoulder edge, bind off 2 (3, 4) sts once, then 2 sts twice, 3 sts 6 times (then 3 sts 5 times, 4 sts 3 times / 4 sts 8 times). At same time, when piece meas 4 cm from beg of shoulder shaping, shape neck as foll: Next row (RS): Bind off center 38 sts. Working each side separately, bind off 2 sts at each neck edge once, 1 st once. No sts rem.

Front: Work same as for back until piece meas 33 (35, 37) cm from cast-on, ending with a WS row. **Note:** Neck, armhole and shoulder shaping are worked simultaneously; read the following section all the way through before proceeding. **Note:** Neck shaping for size 46 and 50/52 begins before armhole shaping, neck shaping for size 56 begins at same time as armhole shaping. Shape V-neck: Next row (RS): Mark center of front. Patt to 6 sts past marker and turn, leaving rem sts on hold. Left front: Next row (WS): [P1, M1L] 6 times, patt to end. Next row (RS): Patt to last 14 sts, skp, 12-st slip st edge. Maintaining 12-st slip st edge and working rem sts in main patt, rep full-fashion dec 2 row every foll RS row 9 times, then every alt 2nd and 4th row 9 times. At same time, when same length as back to armhole, shape armhole at right edge same as for back and when same length as back to shoulder, shape shoulder at right edge same as for back = 12 sts rem for neckband. Cast on 1 selvage st [k on RS, p on WS] at right edge of neckband = 13 sts and cont in patt for 10 cm, ending with a WS row. Next row (RS): Bind off all sts and at same time, k2, k2tog 5 times, k1. Right front: Cast on 6 sts, then with RS facing, patt over held right front sts. Next row (WS): Patt to last 6 sts, [M1L, p1] 6 times. Next row (RS): Work 12-st slip st edge over first 12 sts, k2tog, patt to end. Complete as given for left front, reversing all shaping.

Finishing: Pin pieces to measurements and block. Sew shoulder seams. Join right and left neckband and sew to back neck. Sew side seams.

SLIPOVER · ABOUT BERLIN CHILLY

Design 03 from Filati Classici 16



www.lanagrossa.com

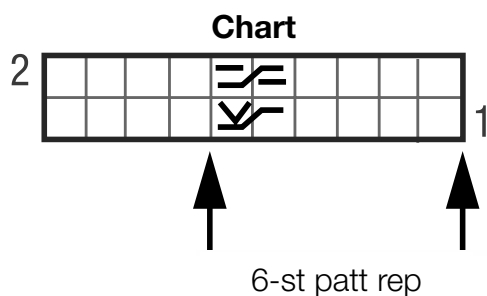
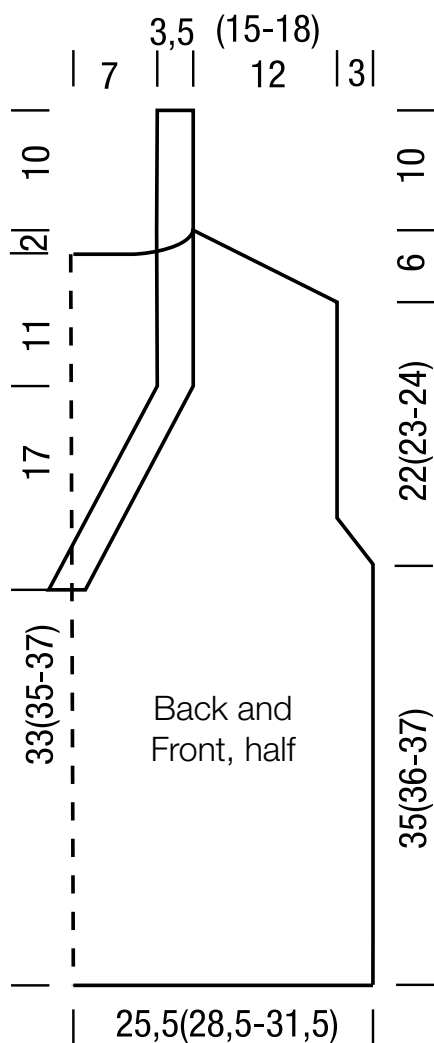


Chart key:

- ☐ = k1
- ☒ = skip first st on left needle; working behind skipped st, ktbl next st, knit skipped st, drop both sts from left needle
- ☒ = skip first st on left needle; working in front of skipped st, purl next st, purl skipped st, drop both sts from left needle

Gauge Swatch

Before you begin ...

...make a gauge swatch. Use the recommended needles, yarns and pattern stitch for your gauge swatch. It should measure approx. 12 cm x 12 cm. Cast-on and bind-off rows, as well as selvage stitches should not be included in the measurement. Pin your swatch and block it as you would the finished pieces of the garment. Count stitches and rows over 10 cm. If your gauge swatch is too small, switch to larger needles. If your gauge swatch is too big, switch to smaller needles.



Abbreviations

beg = begin(ning) · **ch** = chain · **cont** = continue · **dec** = decreas(e)(ing) · **inc** = increas(e)(ing) · **k** = knit · **kwise** = as if to knit
meas = measures · **M1L** = lift strand between sts from front to back and knit this strand through the back loop · **M1R** = lift strand between sts from the back and knit this strand through the front loop · **patt** = pattern · **pm** = place marker · **p** = purl
pwise = as if to purl · **rem** = remain(ing) · **rep** = repeat(s) · **rev St st** = reverse stockinette stitch · **rnd(s)** = round(s) · **RS** = right side · **sc** = single crochet · **skp** = slip 1 stitch as if to knit, knit 1 stitch, pass slipped stitch over knitted stitch · **sk2p** = slip 1 stitch as if to knit, knit 2 together, pass slipped stitch over knitted stitch · **s2kp** = slip 2 stitches as if to knit, k 1 stitch, pass slipped stitches over knitted stitch · **sl** = slip · **st(s)** = stitch(es) · **St st** = stockinette stitch · **tbl** = through the back loop · **tog** = together · **wyib** = with yarn in back of work · **wyif** = with yarn in front of work · **WS** = wrong side · **yo(s)** = yarn over(s)

Publisher's Info

Publisher: Lana Grossa GmbH, Gaimersheim, www.lanagrossa.com

Photographer: Wilfried Wulff, www.wilfriedwulff.com