



www.lanagrossa.com

CROCHETED SHAWL · GOMITOLO SILKHAIR

Design 01 from Filati Gomitolo 03

CROCHETED SHAWL · GOMITOLO SILKHAIR

Design 01 from Filati Gomitolo 03



www.lanagrossa.com

Size 60 x 161 cm

Materials: 100 g of Lana Grossa **Gomitolo Silkhair** (65% mohair, 30% silk, 5% pure wool; 800 m/100 g) in Orange/Red-Brown/Cinnamon Mélange (**col 213**). Size 3 mm crochet hook.

Crochet patt: Multiple of 10 + 1. Work according to chart. Work to patt rep, work 10 sts between arrows for patt rep, work to end of chart. Work rows 1 – 5 once, then rep rows 2 – 5. **Note:** Sts that meet at the bottom are all worked in one st.

Gauge: 1 patt rep and 6 rows = 5 x 10 cm in crochet patt with size 3 mm hook.

Instructions: With size 3 mm hook, ch 135 (131 + 3). Work in crochet patt according to chart until piece meas 161 cm from beg, ending with a chart row 3 or 5. Fasten off.

Finishing: Pin piece to measurements and block.

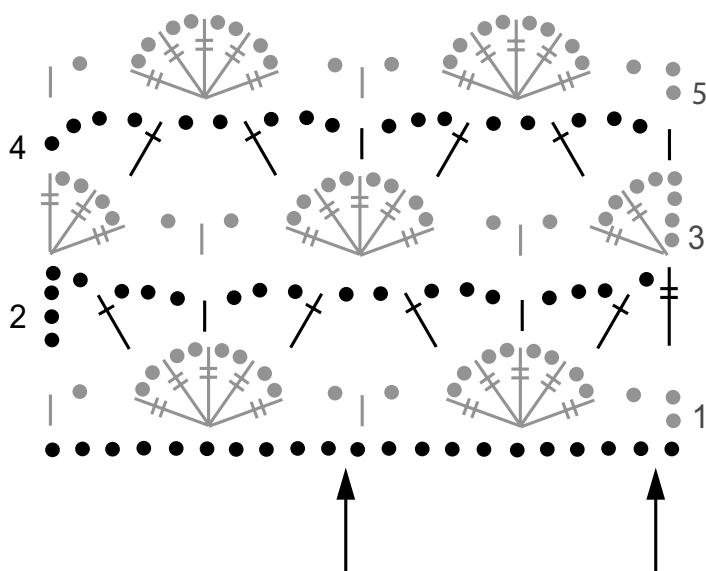


Chart key:

- = chain (ch)
- | = single crochet (sc)
- ⋈ = double crochet (dc)
- ⋈ = treble crochet (trc)

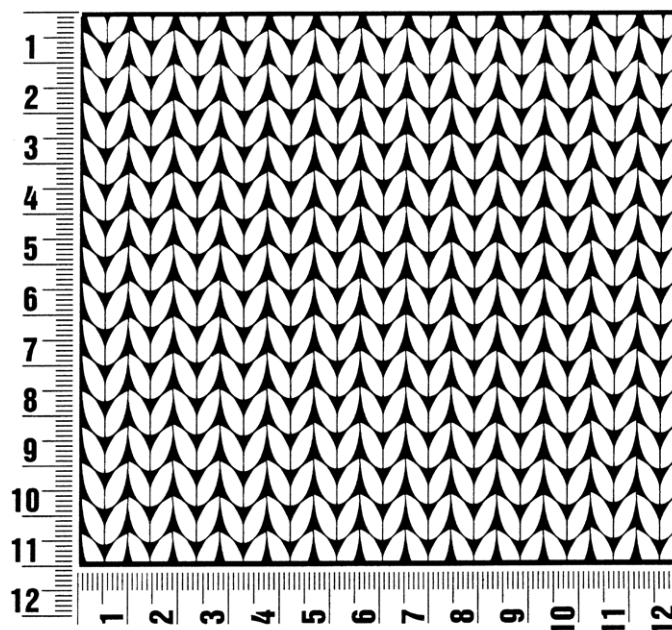
Filati Gomitolo 03

www.lanagrossa.com

Gauge Swatch

Before you begin ...

...make a gauge swatch. Use the recommended needles, yarns and pattern stitch for your gauge swatch. It should measure approx. 12 cm x 12 cm. Cast-on and bind-off rows, as well as selvage stitches should not be included in the measurement. Pin your swatch and block it as you would the finished pieces of the garment. Count stitches and rows over 10 cm. If your gauge swatch is too small, switch to larger needles. If your gauge swatch is too big, switch to smaller needles.



Abbreviations

beg = begin(ning) · **ch** = chain · **cont** = continue · **dec** = decreas(e)(ing) · **inc** = increas(e)(ing) · **k** = knit · **kwise** = as if to knit
meas = measures · **M1L** = lift strand between sts from front to back and knit this strand through the back loop · **M1R** = lift strand between sts from the back and knit this strand through the front loop · **patt** = pattern · **pm** = place marker · **p** = purl
pwise = as if to purl · **rem** = remain(ing) · **rep** = repeat(s) · **rev St st** = reverse stockinette stitch · **rnd(s)** = round(s) · **RS** = right side · **sc** = single crochet · **skp** = slip 1 stitch as if to knit, knit 1 stitch, pass slipped stitch over knitted stitch · **sk2p** = slip 1 stitch as if to knit, knit 2 together, pass slipped stitch over knitted stitch · **s2kp** = slip 2 stitches as if to knit, k 1 stitch, pass slipped stitches over knitted stitch · **sl** = slip · **st(s)** = stitch(es) · **St st** = stockinette stitch · **tbl** = through the back loop · **tog** = together · **wyib** = with yarn in back of work · **wyif** = with yarn in front of work · **WS** = wrong side · **yo(s)** = yarn over(s)

Publisher's Info

Publisher: Lana Grossa GmbH, Gaimersheim, www.lanagrossa.com

Photographer: Herbert Dehn, www.herbertdehn.com