



www.lanagrossa.com

JACKET · GOMITOLO SILKHAIR

Design 02 from Filati Gomitolo 03

JACKET • GOMITOLO SILKHAIR

Design 02 from Filati Gomitolo 03



www.lanagrossa.com

Size 36-38 (40-42, 44-46)

Instructions are given for first size. Figures in parenthesis refer to larger sizes. When only one figure is given, it applies to all sizes.

Materials: 200 g of Lana Grossa **Gomitolo Silkhair** (65% mohair, 30% silk, 5% pure wool; 800 m/100 g) in Brown/Mocha Mélange (**col 210**). Size 4.5 mm needles; size 3 mm circular needle, 120 cm long; size 3.5 mm crochet hook.

Garter st: K every row.

Gauge: 16 sts and 29 rows = 10 x 10 cm in garter st on size 4.5 mm needles.

Back: Worked side to side, beginning at right sleeve. With size 4.5 mm needles cast on 32 (36, 38) sts.

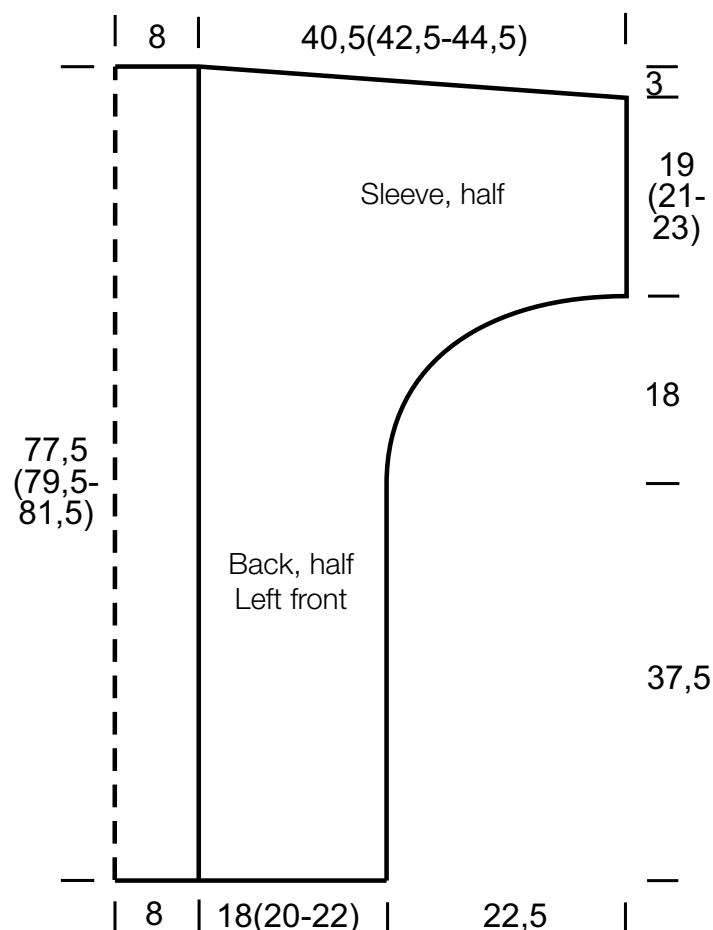
Note: Sleeve and shoulder shaping are worked simultaneously; read the following section all the way through before proceeding. Beg with a WS row, work in garter st and shape sleeve as foll: Inc 1 st at end of every 6th row 5 times, then every 4th row twice, then every other row 9 times, then cast on at beg of WS rows: 2 sts twice, 3 sts once, 4 sts once, 60 sts once. **At same time**, shape shoulder as foll: Inc 1 st at beg of 24 (26, 26)th row from cast-on, then every 20th row (4, 3,

0) times, then every 22nd row 0 (1, 4) times = 124 (128, 130) sts. Work even until piece meas 56.5 (58.5, 60.5) cm from sleeve cast-on edge, ending with a WS row. **Note:** Shoulder and sleeve shaping are worked simultaneously; read the following section all the way through before proceeding. Shape shoulder: Work 18 (20, 20) rows even. Dec 1 st at beg of next RS row, then every 20th row 4 times (then every 22nd row once, then every 20th row 3 times / then every 22nd row once, then every 20th row 3 times). **At same time**, when piece meas 74.5 (78.5, 82.5) cm from sleeve cast-on edge, shape sleeve as foll: At beg of WS rows, bind off 60 sts once, 4 sts once, 3 sts once, 2 sts twice. Dec 1 st at end of next 10 RS rows, then every other RS row twice, then every 6th row 4 times = 32 (36, 38) sts. Work even until piece meas 97 (101, 105) cm from sleeve cast-on edge. Bind off all sts.

Left front: Worked side to side, beg at front edge. With size 4.5 mm needles cast on 124 (128, 130) sts. **Note:** Shoulder and sleeve shaping are worked simultaneously; read the following section all the way through before proceeding. Beg with a WS row, work in garter st and shape shoulder as foll: Dec 1 st at end of every 20th row 5 times (every 22nd row twice, then every 20th row 3 times / every 22nd row twice, then every 20th row 3 times). **At same time**, when piece meas 18 (20, 22) cm from cast-on, shape sleeve as foll: At beg of RS rows, bind off 60 sts once, 4 sts once, 3 sts once, 2 sts twice. Dec 1 st at beg of next 10 RS rows, then every other RS row twice, then every 6th row 4 times = 32 (36, 38) sts. Work even until piece meas 40.5 (42.5, 44.5) cm from cast-on. Bind off all sts.

Right front: Work same as for left front, reversing all shaping.

Finishing: Pin pieces to measurements and block. Sew shoulder seams. **Front and neck band:** With size 3 mm circular needle, pick up and k 274 (280, 286) sts evenly along right front, back neck and left front edge. Work in garter st for 4 cm. Bind off all sts. Sew side and sleeve seams. **Sleeve trim:** With size 3.5 mm crochet hook, work 1 rnd sc around each sleeve edge.



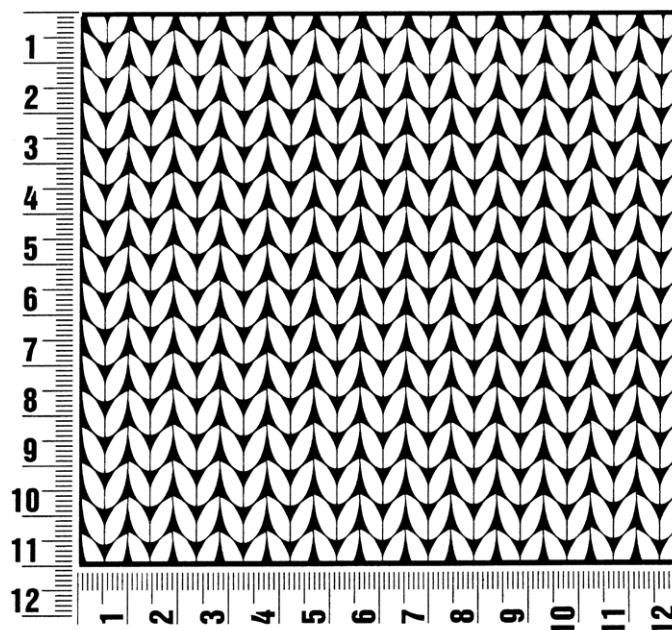
Filati Gomitolo 03

www.lanagrossa.com

Gauge Swatch

Before you begin ...

...make a gauge swatch. Use the recommended needles, yarns and pattern stitch for your gauge swatch. It should measure approx. 12 cm x 12 cm. Cast-on and bind-off rows, as well as selvage stitches should not be included in the measurement. Pin your swatch and block it as you would the finished pieces of the garment. Count stitches and rows over 10 cm. If your gauge swatch is too small, switch to larger needles. If your gauge swatch is too big, switch to smaller needles.



Abbreviations

beg = begin(ning) · **ch** = chain · **cont** = continue · **dec** = decreas(e)(ing) · **inc** = increas(e)(ing) · **k** = knit · **kwise** = as if to knit
meas = measures · **M1L** = lift strand between sts from front to back and knit this strand through the back loop · **M1R** = lift strand between sts from the back and knit this strand through the front loop · **patt** = pattern · **pm** = place marker · **p** = purl
pwise = as if to purl · **rem** = remain(ing) · **rep** = repeat(s) · **rev St st** = reverse stockinette stitch · **rnd(s)** = round(s) · **RS** = right side · **sc** = single crochet · **skp** = slip 1 stitch as if to knit, knit 1 stitch, pass slipped stitch over knitted stitch · **sk2p** = slip 1 stitch as if to knit, knit 2 together, pass slipped stitch over knitted stitch · **s2kp** = slip 2 stitches as if to knit, k 1 stitch, pass slipped stitches over knitted stitch · **sl** = slip · **st(s)** = stitch(es) · **St st** = stockinette stitch · **tbl** = through the back loop · **tog** = together · **wyib** = with yarn in back of work · **wyif** = with yarn in front of work · **WS** = wrong side · **yo(s)** = yarn over(s)

Publisher's Info

Publisher: Lana Grossa GmbH, Gaimersheim, www.lanagrossa.com

Photographer: Herbert Dehn, www.herbertdehn.com