



www.lanagrossa.com

JACKET · GOMITOLO DENIM

Design 05 from Filati Gomitolo 03

JACKET · GOMITOLO DENIM

Design 05 from Filati Gomitolo 03



www.lanagrossa.com

Size 36-38 (40-42, 44-46)

Instructions are given for first size. Figures in parenthesis refer to larger sizes. When only one figure is given, it applies to all sizes.

Materials: 400 g of Lana Grossa **Gomitolo Denim** (80% cotton, 20% polyamide; 740 m/200 g) in Khaki (**col 10**). Size 4.5 mm needles; size 4.5 mm circular needle, 120 cm long; size 3.5 mm crochet hook; two 25 mm buttons [by Union Knopf, item 453037, col 24].

Eyelets: Multiple of 2 + 2 selvage sts. **Row 1 (RS):** Selvage st, * k1, yo; rep from *, end selvage st. **Row 2 (WS):** Selvage st, * sl 2 sts to right needle, dropping yos and pulling sts up to elongate, sl same 2 sts back to left needle, purl 2nd st on left needle, purl first st on left needle, drop sts from needle; rep from *, end selvage st. Work rows 1 and 2 once.

St st: K on RS, p on WS.

Gauge: 19.5 sts and 28 rows = 10 x 10 cm in St st on size 4.5 mm needles.

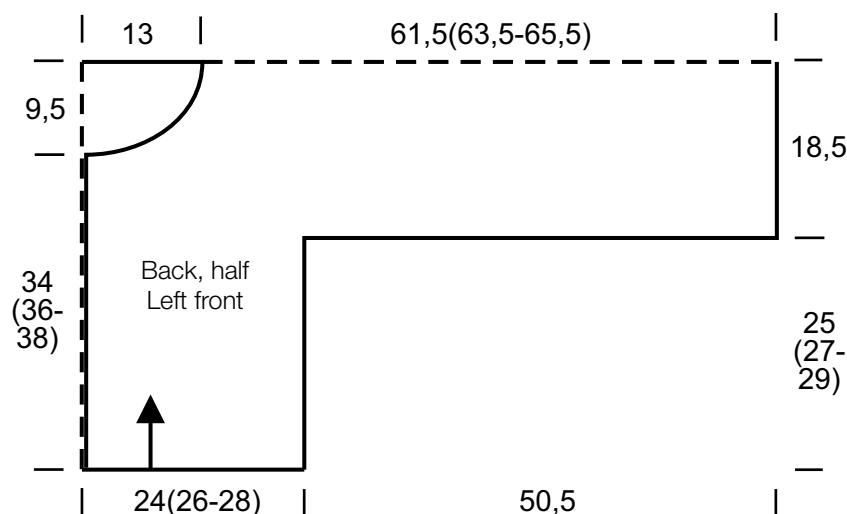
Note: Sleeves stretch in length when jacket is worn.

Instructions: Jacket is worked in one piece across shoulders, starting at bottom edge of back. The 2 fronts are then worked separately down to the bottom edge. With size 4.5 mm needles cast on 96 (104, 112) sts. Beg and end with a WS row, work in St st for 3 rows. Next 2 rows: Work eyelets.

Work in St st until piece meas 25 (27, 29) cm from cast-on, ending with a WS row. Change to circular needle. Shape sleeves: Cast on 98 sts at beg of next 2 rows = 292 (300, 308) sts. Cont until piece meas 43.5 (45.5, 47.5) cm from back cast-on edge, ending with a WS row. Divide for fronts: Next row (RS): K121 (125, 129) and turn, leaving rem sts on hold.

Right front: Cont in St st and shape front neck edge as foll: Inc 1 st at neck edge every other RS row twice, then every foll RS row 4 times, then cast on at neck edge 2 sts twice, 3 sts once, 5 sts once, 7 sts once = 146 (150, 154) sts. Work even until piece meas 18.5 cm from divide, ending with a RS row. Shape sleeve: Bind off 98 sts at beg of next WS row = 48 (52, 56) sts. Work even until piece meas 43.5 (45.5, 47.5) cm from divide, ending with a WS row. Next 2 rows: Work eyelets. Work in St st for 3 rows, then bind off all sts. **Left front:** With RS facing, rejoin yarn to sts on hold. Next row (RS): Bind off 50 sts, knit to end. Complete left front same as for right front, reversing all shaping. Note: Unwind yarn as necessary so col- or repeats of fronts match.

Finishing: Pin pieces to measurements and block. Sew side and sleeve seams. Attach 2 button loops to right front edge as foll: With crochet hook, join yarn with sl st to front edge, ch 5, skip 4 rows, sl st to front edge. Attach top loop just below neck shaping and bottom loop approx. 6 cm down from top loop. With size 3.5 mm hook, work 1 rnd sc around entire edge of jacket and around each sleeve edge. Sew on buttons.



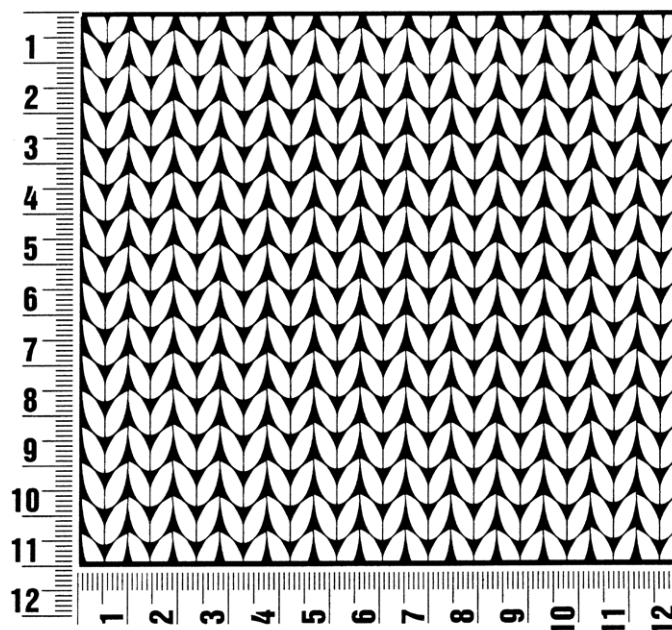
Filati Gomitolo 03

www.lanagrossa.com

Gauge Swatch

Before you begin ...

...make a gauge swatch. Use the recommended needles, yarns and pattern stitch for your gauge swatch. It should measure approx. 12 cm x 12 cm. Cast-on and bind-off rows, as well as selvage stitches should not be included in the measurement. Pin your swatch and block it as you would the finished pieces of the garment. Count stitches and rows over 10 cm. If your gauge swatch is too small, switch to larger needles. If your gauge swatch is too big, switch to smaller needles.



Abbreviations

beg = begin(ning) · **ch** = chain · **cont** = continue · **dec** = decreas(e)(ing) · **inc** = increas(e)(ing) · **k** = knit · **kwise** = as if to knit
meas = measures · **M1L** = lift strand between sts from front to back and knit this strand through the back loop · **M1R** = lift strand between sts from the back and knit this strand through the front loop · **patt** = pattern · **pm** = place marker · **p** = purl
pwise = as if to purl · **rem** = remain(ing) · **rep** = repeat(s) · **rev St st** = reverse stockinette stitch · **rnd(s)** = round(s) · **RS** = right side · **sc** = single crochet · **skp** = slip 1 stitch as if to knit, knit 1 stitch, pass slipped stitch over knitted stitch · **sk2p** = slip 1 stitch as if to knit, knit 2 together, pass slipped stitch over knitted stitch · **s2kp** = slip 2 stitches as if to knit, k 1 stitch, pass slipped stitches over knitted stitch · **sl** = slip · **st(s)** = stitch(es) · **St st** = stockinette stitch · **tbl** = through the back loop · **tog** = together · **wyib** = with yarn in back of work · **wyif** = with yarn in front of work · **WS** = wrong side · **yo(s)** = yarn over(s)

Publisher's Info

Publisher: Lana Grossa GmbH, Gaimersheim, www.lanagrossa.com

Photographer: Herbert Dehn, www.herbertdehn.com