



www.lanagrossa.com

TOP · GOMITOLO DENIM

Design 12 from Filati Gomitolo 03

TOP · GOMITOLO DENIM

Design 12 from Filati Gomitolo 03



www.lanagrossa.com

Size 36-38 (40-42, 44-46)

Instructions are given for first size. Figures in parenthesis refer to larger sizes. When only one figure is given, it applies to all sizes.

Materials: 400 g of Lana Grossa **Gomitolo Denim** (80% cotton, 20% polyamide; 740 m/200 g) in Salmon (**col 2**). Size 3 and 3.5 mm needles; size 3 mm crochet hook.

Garter st: K every row.

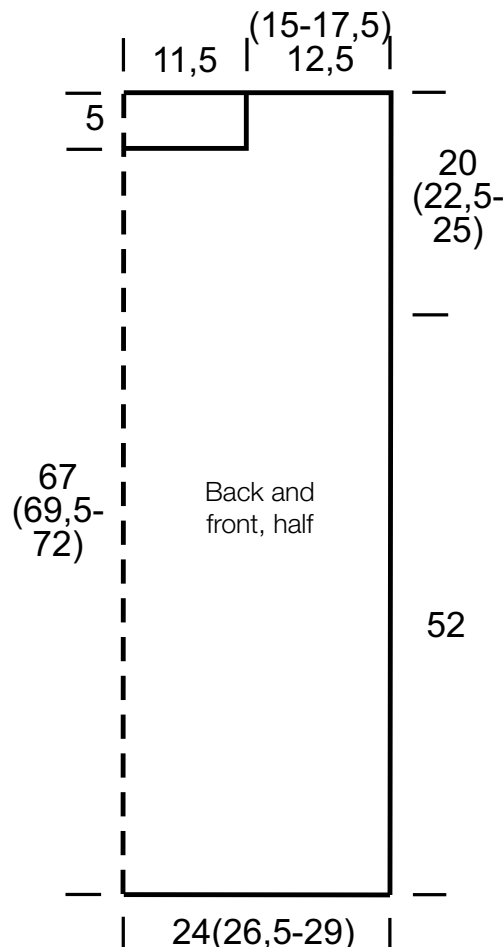
Openwork patt: Multiple of 6 + 2 selvage sts. **Row 1 (RS):** Knit all sts. **Row 2 (WS):** Knit all sts. **Row 3:** Knit all sts. **Row 4:** Selvage st, * yo twice, k1; rep from *, end selvage st. **Row 5:** Selvage st, * sl 6 sts to right needle, dropping yos and pulling sts up to elongate, insert left needle from left to right into first 3 of the 6 slipped sts, pass first 3 sts over last 3 sts, sl these 3 sts back to left needle, k1f&b in each of these 3 sts = 6 sts; rep from *, end selvage st. **Row 6:** Knit all sts. Rep rows 1 – 6.

Gauge: 25 sts and 26 rows = 10 x 10 cm in openwork patt on size 3.5 mm needles.

Back: With size 3 mm needles and beginning with darkest shade cast on 122 (134, 146) sts. Beg and end with a WS row work in garter st for 3 rows. Change to size 3.5 mm needles. Work in openwork patt until piece meas 72 (74.5, 77) cm from cast-on. Bind off all sts.

Front: With size 3 mm needles and beginning with darkest shade of 2nd ball of yarn cast on 122 (134, 146) sts. Work same as for back until piece meas 67 (69.5, 71.5) cm from cast-on, ending with a WS row. Shape neck: Next row (RS): Bind off center 58 sts. Working each side separately, work even in patt until piece meas 72 (74.5, 77) cm from cast-on. Bind off rem 32 (38, 44) sts for each shoulder.

Finishing: Pin pieces to measurements and block. Sew shoulder and side seams. **Neck and armhole edging:** With size 3 mm crochet hook, work 1 rnd rev sc [work sc from left to right] around neck edge and around each armhole edge.



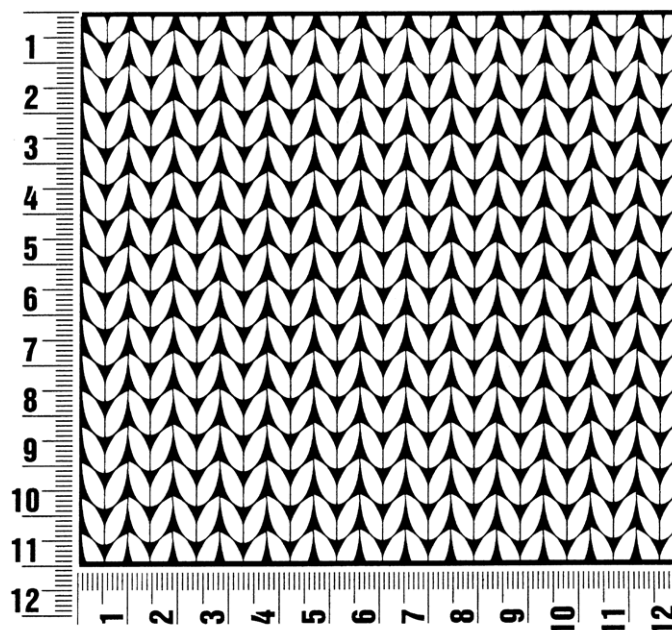
Filati Gomitolo 03

www.lanagrossa.com

Gauge Swatch

Before you begin ...

...make a gauge swatch. Use the recommended needles, yarns and pattern stitch for your gauge swatch. It should measure approx. 12 cm x 12 cm. Cast-on and bind-off rows, as well as selvage stitches should not be included in the measurement. Pin your swatch and block it as you would the finished pieces of the garment. Count stitches and rows over 10 cm. If your gauge swatch is too small, switch to larger needles. If your gauge swatch is too big, switch to smaller needles.



Abbreviations

beg = begin(ning) · **ch** = chain · **cont** = continue · **dec** = decreas(e)(ing) · **inc** = increas(e)(ing) · **k** = knit · **kwise** = as if to knit
meas = measures · **M1L** = lift strand between sts from front to back and knit this strand through the back loop · **M1R** = lift strand between sts from the back and knit this strand through the front loop · **patt** = pattern · **pm** = place marker · **p** = purl
pwise = as if to purl · **rem** = remain(ing) · **rep** = repeat(s) · **rev St st** = reverse stockinette stitch · **rnd(s)** = round(s) · **RS** = right side · **sc** = single crochet · **skp** = slip 1 stitch as if to knit, knit 1 stitch, pass slipped stitch over knitted stitch · **sk2p** = slip 1 stitch as if to knit, knit 2 together, pass slipped stitch over knitted stitch · **s2kp** = slip 2 stitches as if to knit, k 1 stitch, pass slipped stitches over knitted stitch · **sl** = slip · **st(s)** = stitch(es) · **St st** = stockinette stitch · **tbl** = through the back loop · **tog** = together · **wyib** = with yarn in back of work · **wyif** = with yarn in front of work · **WS** = wrong side · **yo(s)** = yarn over(s)

Publisher's Info

Publisher: Lana Grossa GmbH, Gaimersheim, www.lanagrossa.com

Photographer: Herbert Dehn, www.herbertdehn.com