



www.lanagrossa.com

CROCHETED SHAWL · GOMITOLO DENIM

Design 13 from Filati Gomitolo 03

CROCHETED SHAWL · GOMITOLO DENIM

Design 13 from Filati Gomitolo 03



www.lanagrossa.com

Size 90 x 200 cm

Materials: 200 g of Lana Grossa **Gomitolo Denim** (80% cotton, 20% polyamide; 740 m/200 g) in Jeans (**col 8**). Size 4 mm crochet hook.

Crochet patt: Work according to chart. Work outlined patt rep throughout. Work rows 1 – 3 once, then work rows [2 and 3] 13 times, then work row 4 once. **Chart note:** Sts that meet at the bottom are all worked in one st.

Gauge: 1 patt rep and 4.5 rows = 9.5 x 10 cm in crochet patt with size 4 mm hook.

Instructions: Shawl begins at center. With size 4 mm hook, ch 4, sl st in first ch to form ring. Work crochet patt according to chart for 30 rows, then work shell edging as foll: **Row 31:** Ch 3 (counts as dc), 5 dc into ch-5 sp, dc in next trc, * 5 dc into ch-5 sp, dc in next trc, 3 dc into ch-3 sp, dc in next trc; rep from *, end 5 dc into ch-5 sp, dc in next trc, 5 dc into ch-5 sp, dc in top of beg ch-3. **Row 32:** Ch 3 (counts as dc), * 1 shell of [2 dc, ch 1, 2 dc] in next dc, skip next 2 dc; rep from *, end 1 shell in next dc, dc in top of beg ch-3. **Row 33:** Ch 3 (counts as dc), * 1 shell into ch-1 sp of shell below, dc in next st; rep from *, dc in top of beg ch-3. Fasten off.

Finishing: Pin piece to measurements and block.

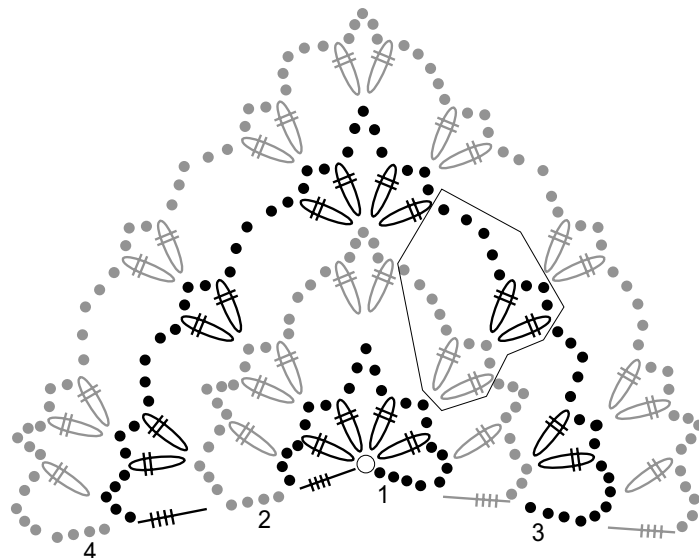


Chart key:

- = chain (ch)
- ⋈ = double crochet (dc)
- ≡ = triple treble crochet (trtrc)
- ⊕ = trc2tog

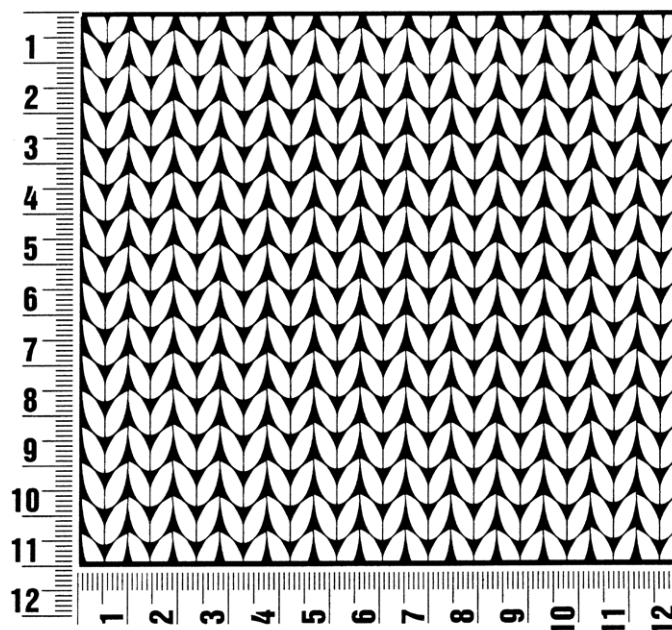
Filati Gomitolo 03

www.lanagrossa.com

Gauge Swatch

Before you begin ...

...make a gauge swatch. Use the recommended needles, yarns and pattern stitch for your gauge swatch. It should measure approx. 12 cm x 12 cm. Cast-on and bind-off rows, as well as selvage stitches should not be included in the measurement. Pin your swatch and block it as you would the finished pieces of the garment. Count stitches and rows over 10 cm. If your gauge swatch is too small, switch to larger needles. If your gauge swatch is too big, switch to smaller needles.



Abbreviations

beg = begin(ning) · **ch** = chain · **cont** = continue · **dec** = decreas(e)(ing) · **inc** = increas(e)(ing) · **k** = knit · **kwise** = as if to knit
meas = measures · **M1L** = lift strand between sts from front to back and knit this strand through the back loop · **M1R** = lift strand between sts from the back and knit this strand through the front loop · **patt** = pattern · **pm** = place marker · **p** = purl
pwise = as if to purl · **rem** = remain(ing) · **rep** = repeat(s) · **rev St st** = reverse stockinette stitch · **rnd(s)** = round(s) · **RS** = right side · **sc** = single crochet · **skp** = slip 1 stitch as if to knit, knit 1 stitch, pass slipped stitch over knitted stitch · **sk2p** = slip 1 stitch as if to knit, knit 2 together, pass slipped stitch over knitted stitch · **s2kp** = slip 2 stitches as if to knit, k 1 stitch, pass slipped stitches over knitted stitch · **sl** = slip · **st(s)** = stitch(es) · **St st** = stockinette stitch · **tbl** = through the back loop · **tog** = together · **wyib** = with yarn in back of work · **wyif** = with yarn in front of work · **WS** = wrong side · **yo(s)** = yarn over(s)

Publisher's Info

Publisher: Lana Grossa GmbH, Gaimersheim, www.lanagrossa.com

Photographer: Herbert Dehn, www.herbertdehn.com