



www.lanagrossa.com

SHAWL · GOMITOLO SILKHAIR

Design 15 from Filati Gomitolo 03

SHAWL · GOMITOLO SILKHAIR

Design 15 from Filati Gomitolo 03



www.lanagrossa.com

Size 59 x 193 cm

Materials: 100 g of Lana Grossa **Gomitolo Silkhaire** (65% mohair, 30% silk, 5% pure wool; 800 m/100 g) in Lilac/Light Purple/Grey-Blue Mélange (**col 212**). Size 7 mm needles.

Openwork patt: Multiple of 6 + 1 + 2 selvage sts. Work according to chart. Numbers at right edge of chart indicate RS rows, numbers at left edge of chart indicate WS rows. Work to patt rep, work 6 sts between arrows for patt rep, work to end of chart. Work rows 1 – 10 once, then rep rows 3 – 10.

Gauge: 19 sts and 15.5 rows = 10 x 10 cm in openwork patt on size 7 mm needles.

Instructions: With size 7 mm needles cast on 111 sts. Work openwork patt according to chart until piece meas 193 cm from cast-on. Bind off all sts.

Finishing: Pin piece to measurements and block.

Chart key:

⊕ = selvage st

□ = k1

▢ = p1

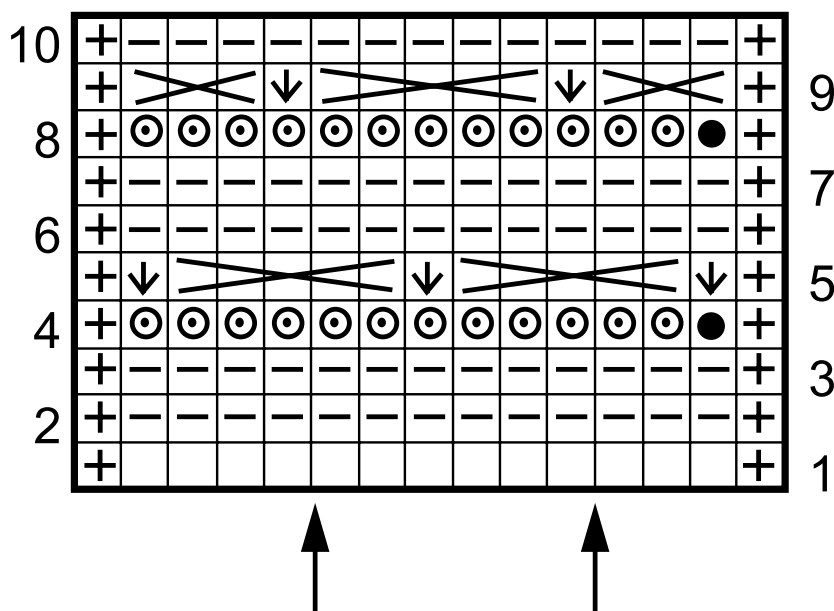
⊙ = p1, yo

● = yo, p1, yo

⌞ = p1, dropping yos and pulling st up to elongate

⌞⌞⌞ = sl 3 sts to right needle, dropping yos and pulling sts up to elongate, sl 3 sts back to left needle, (k3tog tbl, yo, k3tog tbl) into same 3 sts tog

⌞⌞⌞⌞⌞ = sl 5 sts to right needle, dropping yos and pulling sts up to elongate, sl 5 sts back to left needle, (k5tog tbl, yo, k5tog tbl, yo, k5tog tbl) into same 5 sts tog



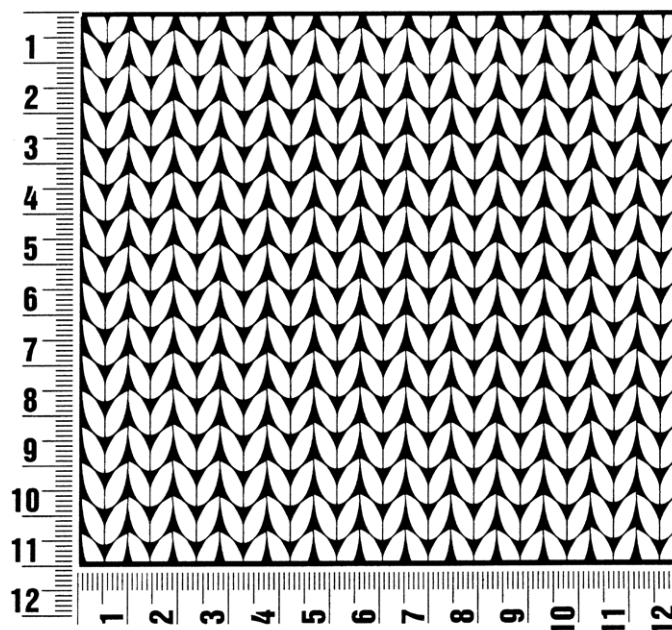
Filati Gomitolo 03

www.lanagrossa.com

Gauge Swatch

Before you begin ...

...make a gauge swatch. Use the recommended needles, yarns and pattern stitch for your gauge swatch. It should measure approx. 12 cm x 12 cm. Cast-on and bind-off rows, as well as selvage stitches should not be included in the measurement. Pin your swatch and block it as you would the finished pieces of the garment. Count stitches and rows over 10 cm. If your gauge swatch is too small, switch to larger needles. If your gauge swatch is too big, switch to smaller needles.



Abbreviations

beg = begin(ning) · **ch** = chain · **cont** = continue · **dec** = decreas(e)(ing) · **inc** = increas(e)(ing) · **k** = knit · **kwise** = as if to knit
meas = measures · **M1L** = lift strand between sts from front to back and knit this strand through the back loop · **M1R** = lift strand between sts from the back and knit this strand through the front loop · **patt** = pattern · **pm** = place marker · **p** = purl
pwise = as if to purl · **rem** = remain(ing) · **rep** = repeat(s) · **rev St st** = reverse stockinette stitch · **rnd(s)** = round(s) · **RS** = right side · **sc** = single crochet · **skp** = slip 1 stitch as if to knit, knit 1 stitch, pass slipped stitch over knitted stitch · **sk2p** = slip 1 stitch as if to knit, knit 2 together, pass slipped stitch over knitted stitch · **s2kp** = slip 2 stitches as if to knit, k 1 stitch, pass slipped stitches over knitted stitch · **sl** = slip · **st(s)** = stitch(es) · **St st** = stockinette stitch · **tbl** = through the back loop · **tog** = together · **wyib** = with yarn in back of work · **wyif** = with yarn in front of work · **WS** = wrong side · **yo(s)** = yarn over(s)

Publisher's Info

Publisher: Lana Grossa GmbH, Gaimersheim, www.lanagrossa.com

Photographer: Herbert Dehn, www.herbertdehn.com