



www.lanagrossa.com

© Lana Grossa GmbH - Photo: Herbert Dehn - www.herbertdehn.com

PULLOVER · SHADES OF COTTON

Design 04 from Shades of Cotton 02

PULLOVER · SHADES OF COTTON

Design 04 from Shades of Cotton 02



www.lanagrossa.com

Size 36-38 (40-42, 44-46)

Instructions are given for first size. Figures in parenthesis refer to larger sizes. When only one figure is given, it applies to all sizes.

Materials: 400 g of Lana Grossa **Shades of Cotton** (100% cotton; 800 m/200 g) in Wine/Ruby/Red/Cyclamen/Orange (**col 114**). Size 3 and 3.5 mm needles; one set size 3 mm double-pointed needles [dpns].

Gauge: 20.5 sts and 32 rows = 10 x 10 cm in quatrefoil eyelets on size 3.5 mm needles.

Quatrefoil eyelets: Work according to chart. Multiple of 5 + 2 + 2 selvage sts. Numbers at right edge of chart indicate RS rows; on WS rows, p all sts and yos. Rep rows 1 – 16.

Rib patt: K2, p2.

Selvage sts: On every row: Slip first st, work last st in patt. Maintain selvage sts throughout.

Back: With size 3 mm needles and pulling yarn from center of ball (= Wine) cast on 92 (96, 108) sts. Next row (WS): Selvage st, p2, * k2, p2; rep from *, end selvage st. Maintaining selvage sts, work in rib patt as established until piece meas 6 cm from cast-on, increasing 2 (3, 1) st(s) on last WS row = 94 (99, 109) sts. Change to size 3.5 mm needles. Work quatrefoil eyelets according to chart until piece meas 26.5 cm from cast-on, ending with a WS row. Shape sleeves: For size 36-38: Inc 1 st at each end of next 6 RS rows = 106 sts. Work 1 WS row. Cast on 2 sts at beg of next 12 rows = 130 sts, then cast on 3 sts at beg of next 12 rows = 166 sts, then cast on 4 sts at beg of next 12 rows = 214 sts, then cast on 6 sts at beg of next 8 rows = 262 sts. Work increased sts into patt.

For size 40-42: Inc 1 st at each end of next 6 RS rows = 111 sts. Work 1 WS row. Cast on 2 sts at beg of next 12 rows = 135 sts, then cast on 3 sts at beg of next 12 rows = 171 sts, then cast on 4 sts at beg of next 12 rows = 219 sts, then cast on 5 sts at beg of next 6 rows = 249 sts, then cast on 6 sts at beg of next 2 rows = 261 sts. Work increased sts into patt.

For size 44-46: Inc 1 st at each end of next 6 RS rows = 121 sts. Work 1 WS row. Cast on 2 sts at beg of next 12 rows = 145 sts, then cast on 3 sts at beg of next 12 rows = 181 sts, then cast on 4 sts at beg of next 18 rows = 253, then cast on 5 sts at beg of next 2 rows = 263 sts. Work increased sts into patt. For all sizes: Work even in patt for 12 cm, ending with a WS row. Shape shoulders/overarms and neck: Bind off 20 sts at beg of next 2 rows, 15 sts at beg of next 10 rows, 13 sts at beg of next 2 rows. At same time, when piece meas 2.5 cm from beg of shoulder/overarm shaping, shape neck as foll: Next row (RS): Bind off center 30 (33, 35) sts. Working each side separately, bind off 3 (2, 2) sts at each neck edge twice, 1 st twice. No sts rem.

Front: Work same as for back and at same time, when piece meas 42 cm from cast-on, shape neck as foll: Next row (RS): Bind off center 22 (23, 25) sts. Working each side separately, bind off 3 sts at each neck edge once, 2 sts twice, 1 st 4 (3, 3) times. No sts rem.

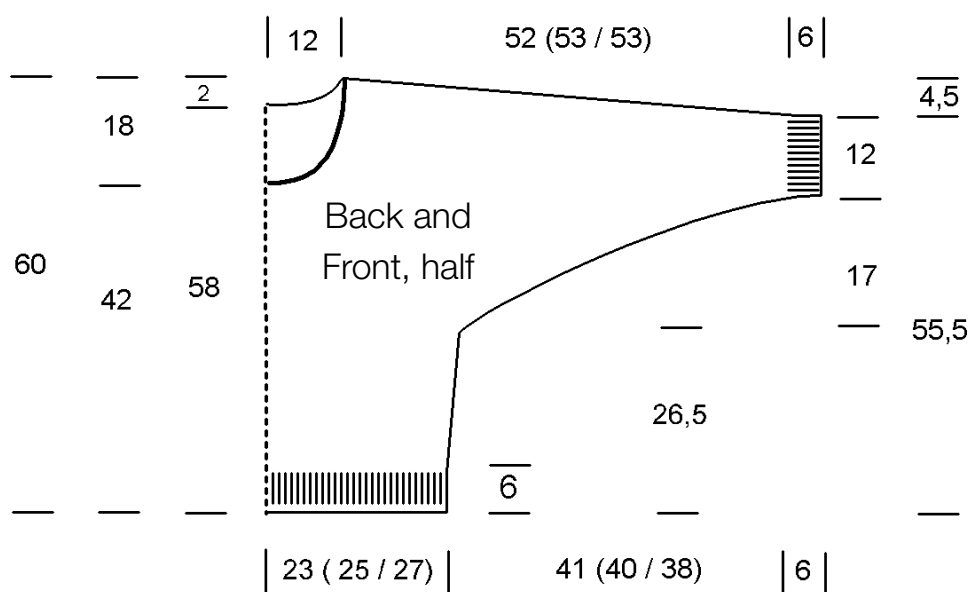
Finishing: Pin pieces to measurements and block. Sew shoulder/overarm seams. Neckband: With dpns, pick up and k 136 (140, 140) sts evenly around neck edge. Join for working in rnds. Work rib patt in rnds for 3 cm. Loosely bind off all sts in rib. Sew side and sleeve seams. Sleeve cuffs: With dpns, pick up and k 44 sts evenly around sleeve edge. Join for working in rnds. Work rib patt in rnds for 6 cm. Loosely bind off all sts in rib.

PULLOVER · SHADES OF COTTON

Design 04 from Shades of Cotton 02



www.lanagrossa.com



Chart

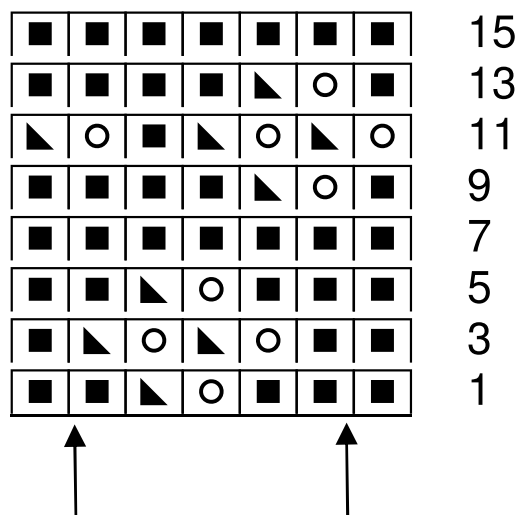


Chart key:

- = k1
- ▲ = skp: sl 1 kwise, k1, pass slipped st over knitted st
- = yo

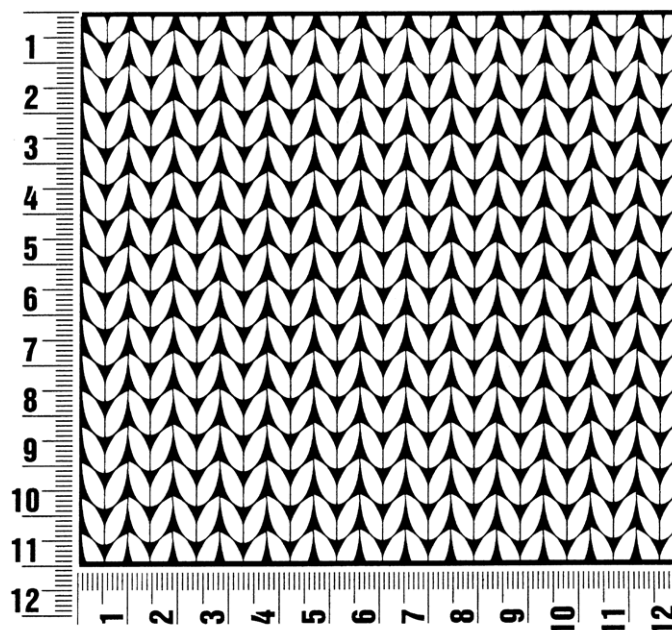
Shades of Cotton 02

www.lanagrossa.com

Gauge Swatch

Before you begin ...

...make a gauge swatch. Use the recommended needles, yarns and pattern stitch for your gauge swatch. It should measure approx. 12 cm x 12 cm. Cast-on and bind-off rows, as well as selvage stitches should not be included in the measurement. Pin your swatch and block it as you would the finished pieces of the garment. Count stitches and rows over 10 cm. If your gauge swatch is too small, switch to larger needles. If your gauge swatch is too big, switch to smaller needles.



Abbreviations

beg = begin(ning) · **ch** = chain · **cont** = continue · **dec** = decreas(e)(ing) · **inc** = increas(e)(ing) · **k** = knit · **kwise** = as if to knit
meas = measures · **M1L** = lift strand between sts from front to back and knit this strand through the back loop · **M1R** = lift strand between sts from the back and knit this strand through the front loop · **patt** = pattern · **pm** = place marker · **p** = purl
pwise = as if to purl · **rem** = remain(ing) · **rep** = repeat(s) · **rev St st** = reverse stockinette stitch · **rnd(s)** = round(s) · **RS** = right side · **sc** = single crochet · **skp** = slip 1 stitch as if to knit, knit 1 stitch, pass slipped stitch over knitted stitch · **sk2p** = slip 1 stitch as if to knit, knit 2 together, pass slipped stitch over knitted stitch · **s2kp** = slip 2 stitches as if to knit, k 1 stitch, pass slipped stitches over knitted stitch · **sl** = slip · **st(s)** = stitch(es) · **St st** = stockinette stitch · **tbl** = through the back loop · **tog** = together · **wyib** = with yarn in back of work · **wyif** = with yarn in front of work · **WS** = wrong side · **yo(s)** = yarn over(s)

Publisher's Info

Publisher: Lana Grossa GmbH, Gaimersheim, www.lanagrossa.com

Photographer: Herbert Dehn, www.herbertdehn.com